

COMBINED SEED-DRILLS AND FRONT HOPPERS





HIGH STRENGTH STEEL

All Alpego machines use the best steel to reduce weight and increase work performance, this maximizing both consumption and operating costs. This has a great impact on environmental sustainability as well.

WE HAVE CREATED A COMPLETE SYSTEM BECAUSE HAVING THE BEST STEEL IS NOT ENOUGH.

The sticker "ALPEGO INSIDE" on all machines, certifies the **high quality** of Alpego's products. An union of **first quality materials**, **eco-sustainable coating** process and **certified welding** that guarantees an **exceptional durability and quality over the years**.



ECO PAINTING

A unique system of its kind throughout Europe, which allows **each component to be painted with the most suitable process and in full respect for the environment**. The paints used, in fact, are water-based and powder-based and do **not produce emissions of VOC** (Volatile Organic Compounds).



CERTIFIED WELDING

For more than twenty years the exceptional durability of Alpego structural components has been guaranteed by the effectiveness of **welds made by highly qualified personnel in accordance with standardized processes certified by the National Welding Institute**.

Your customized SEED-DRILL

Accuracy and simplicity to meet your needs

The choice of the seed-drill is essential. A good sowing is the basis for a good harvest. Our combined seed-drills have been designed and developed to optimize the seedbed preparation and to ensure a precise and regular seeding, even in challenging and difficult conditions.

JET-M

EFFICIENT inside

HP 85-250
Page 20



JET-X

PROGRESS inside

HP 120-320
Page 22



EFFICIENT inside

The machine has been designed to guarantee an optimal compromise between performance and ease of use thanks to:

- Quick release of the harrow
- Metering unit AIRON
- Low consumption hydraulic turbine
- Ergonomic front hopper with advanced center of gravity
- Electronic control of sowing
- Possibility of use with low power tractors

PROGRESS inside

The machine is designed for professional agriculture in the most demanding and intense conditions thanks to its remarkable performance and high work flows:

- Seeding control
- ISOBUS system (on request)
- Easy emptying and cleaning
- High performance hydraulic turbine
- Quick release with fast electric and hydraulic decoupling

Thanks to simple, quick and precise settings, the new Alpego seed-drills adapt to all situations and working conditions. The multiple Alpego solutions allow - thanks to the wide choice of implements for working the soil: power harrows, rotary tillers, rollers, seed-drills - to find the most suitable solutions to your needs for the coming years.

AS PRO

PROGRESS inside

HP 120-500
Page 28



AS MAX

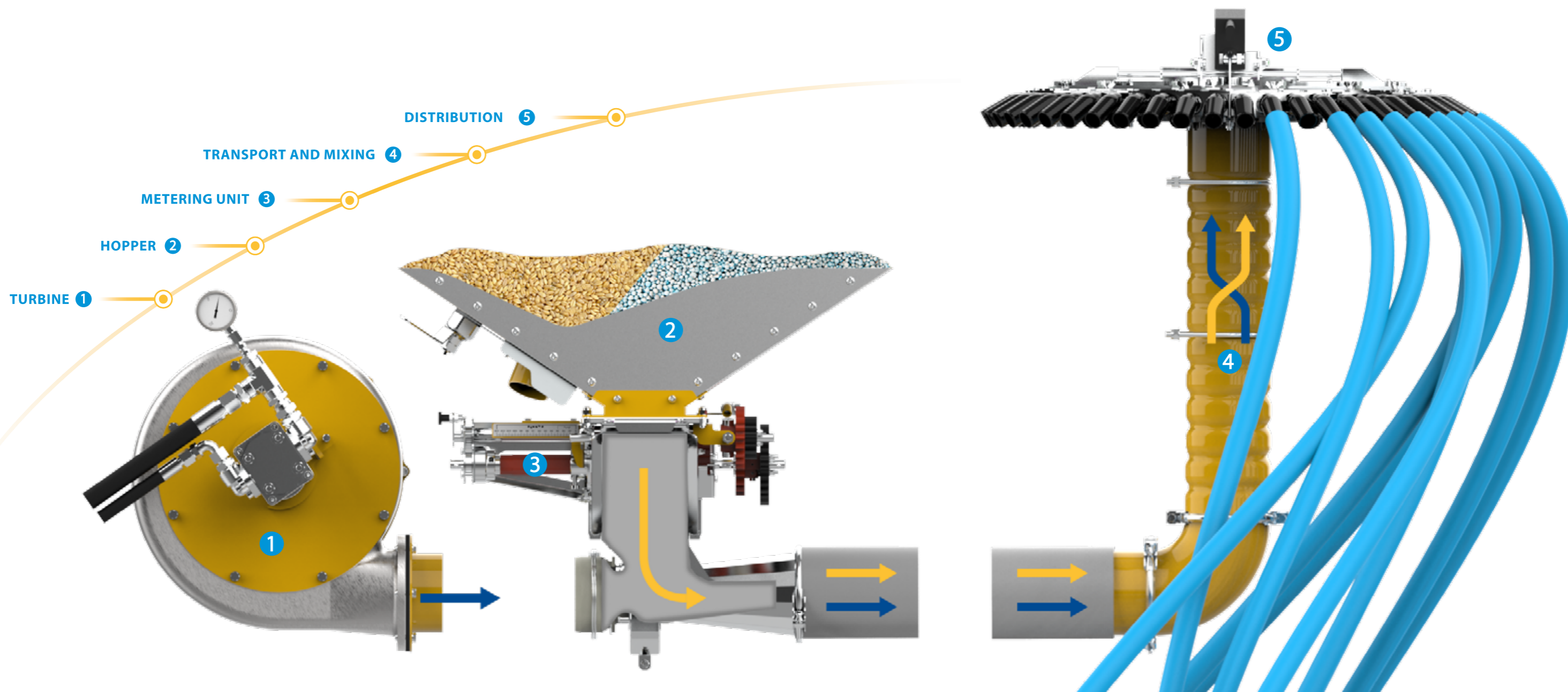
PROGRESS inside

HP 120-500
Page 32



Distribution and dosing system

Accuracy, power and high performance



1

TURBINE

Designed to guarantee the minimum use of oil even in the most demanding working conditions, while maintaining high performance thanks to the high-performance engine, requiring little energy from the tractor.

2

HOPPER

Alpego hoppers are characterized by their unique shape (thanks to which the center of gravity of the machine is closer to the tractor), their excellent accessibility and ease of loading. They can be used for a wide range of seeds and fertilizers. Furthermore, in the premium versions (ASPRO and ASMAX) the hoppers are entirely made of stainless steel.

3

METERING UNIT

Alpego metering units are designed and developed internally and guarantee maximum precision and ease of adjustment for all products. They offer an exceptional range of use, dosing, depending on the model, seeds and fertilizer from 2 to 500kg per hectare.

4

TRANSPORT AND MIXING

All transport channels guarantee fluidity and performance thanks to their large diameter, favouring optimal product mixing and faster flow. They are also made of wear-resistant material to ensure maximum durability over the years.

5

DISTRIBUTION

Alpego distribution heads are designed to meet any need, guaranteeing an optimal distribution of the product both with seeds and with fertilizers (through distribution heads from 6 to 48 rows). Depending on the models, the Turbo Rotal system is present.

RUBBER

A seeding bar for all weather conditions!

PLOWED SOIL



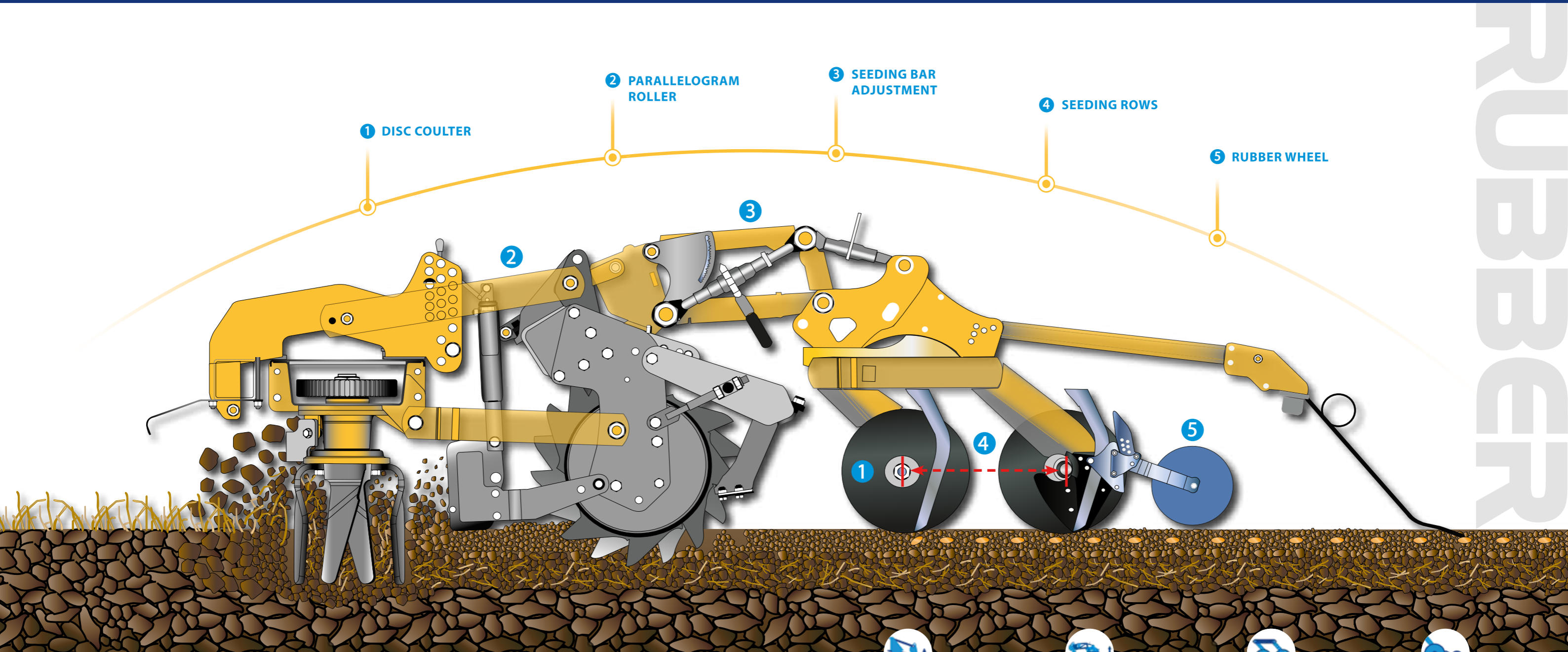
WET SOIL



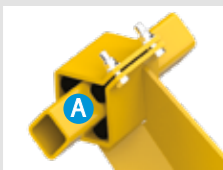
SOIL WITH CROP RESIDUES



STONY SOIL



1



A - SILENT BLOCK : Shock-absorbing system of the drilling element, which makes it possible to develop a maximum disc resistance of 60 Kg.

B - DISC COULTER : The disc with a diameter of 355 mm, suitably inclined, with a cutting profile allows perfect and constant penetration into the ground and uniform rolling.

C - DOUBLE ROLLER BEARING : Two roller bearings for unprecedented reliability also in tough conditions.

D - PROTECTION PLATE : The protection plate shields the seed flow until its contact with the seeding bed for a uniform sowing.

2



PARALLELOGRAM ROLLER

Parallelogram system for power harrow working depth adjustment; the 2 seeding bars stay horizontal for a uniform pressure on the coulters.

3



SEEDING BAR ADJUSTMENT

Parallelogram for adjusting the depth and incidence of the seeding bar by means of two jacks.

4



SEEDING ROWS

Large distance between the 2 sowing rows (43 cm) to facilitate the passage of the soil and any cultural residues.

5



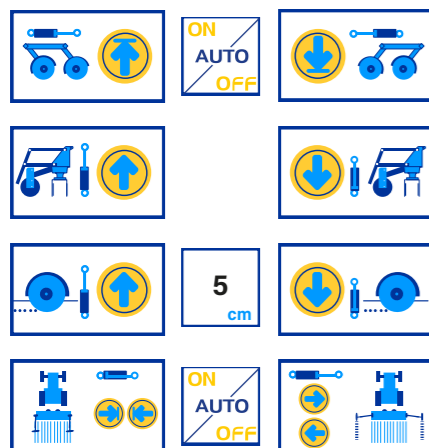
RUBBER WHEEL

Rubber seed press wheel designed for shallow seeding.



Control of the seed-drill at your fingertips

An optimized distribution system for uniform sowing

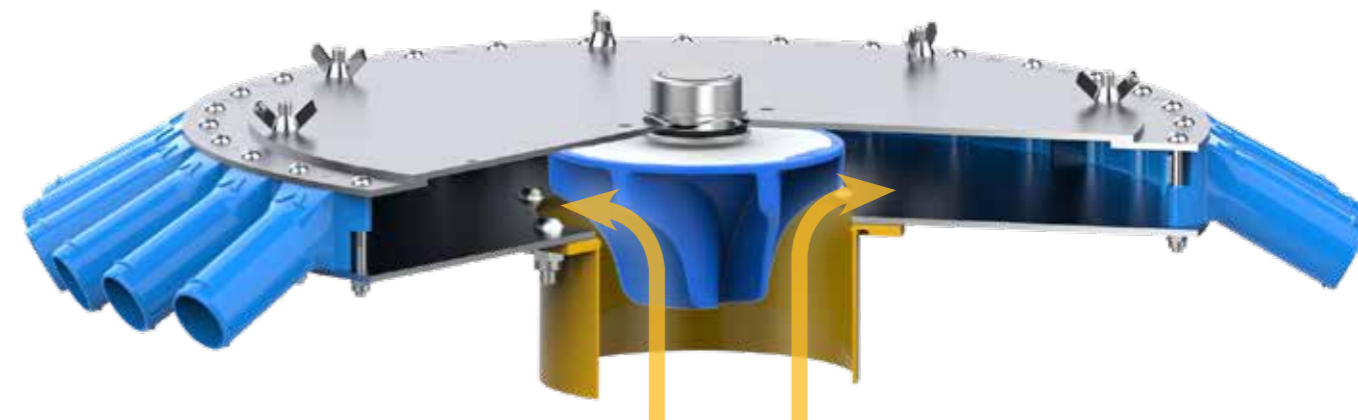


AI-MOVE

ALPEGO INTELLIGENCE MOVE*

The A.I. MOVE package adds state-of-the-art control of hydraulic accessories to seed drills combined with power harrows equipped with A.I. GUARD PRO. Functions and accessories are controlled directly from the tractor monitor. What's more, A.I. MOVE reduces the number of hydraulic connections to the tractor (just 1 double-acting distributor with continuous flow).

*A UT monitor is required for use with NON ISOBUS tractors



The Turbo ROTAL system is an innovative system consisting of a spinning impeller located in the centre of the distribution head, that promotes a more uniform distribution of the seed to the seeding rows even in hilly areas thus reducing by a 50% factor the error in distribution homogeneity.



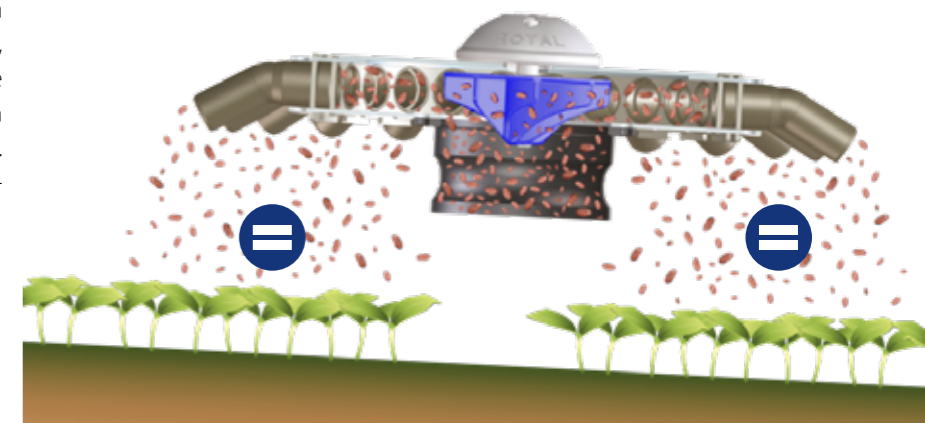
TC7

- 7" high resolution colour touch-screen (800x480TFT)
- 2 USB for data transfer
- Serial port RS232
- Camera input
- CAN-BUS connector
- Wireless interface from rear USB
- Functions can be expanded with several installable license, i.e. Task Control (TC), Track leader (parallel drive), Section control (TCSC), Variable rate (VRC).

For Alpego seed-drills JET-X, ASPRO ISOBUS and ASMAX ISOBUS

ALPEGO

The Alpego Turbo ROTAL solution guarantees a better distribution of the product on each row, the rotating movement of the turbine spreads the seed uniformly on all the outputs of the distribution head, even if it works in a non-horizontal way. It proved a better birth and better seeding efficiency.



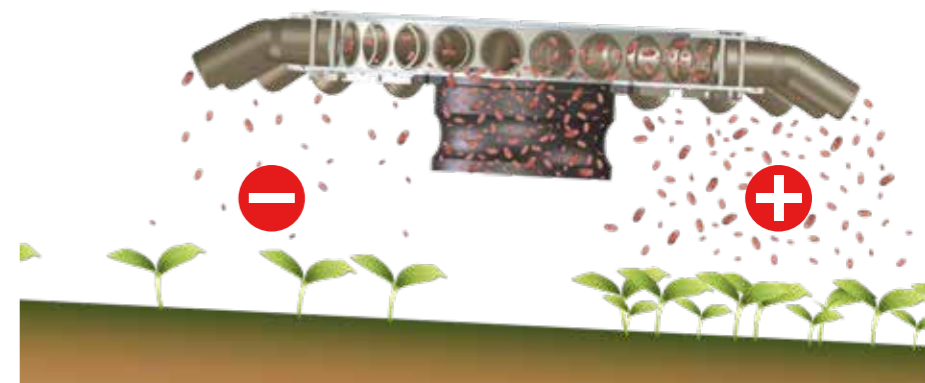
Super-Plus

- Electronic metering unit management
- Automatic weighing and calibration
- Modulation of the distributed seed quantity
- Warning alarm for hopper reserve level
- Control of the metering unit rotation
- Forward speed
- Turbine regime
- Tram-Line system
- Pre-Start function

For Alpego seed-drills JET-M e ASPRO

Standard solutions on the market

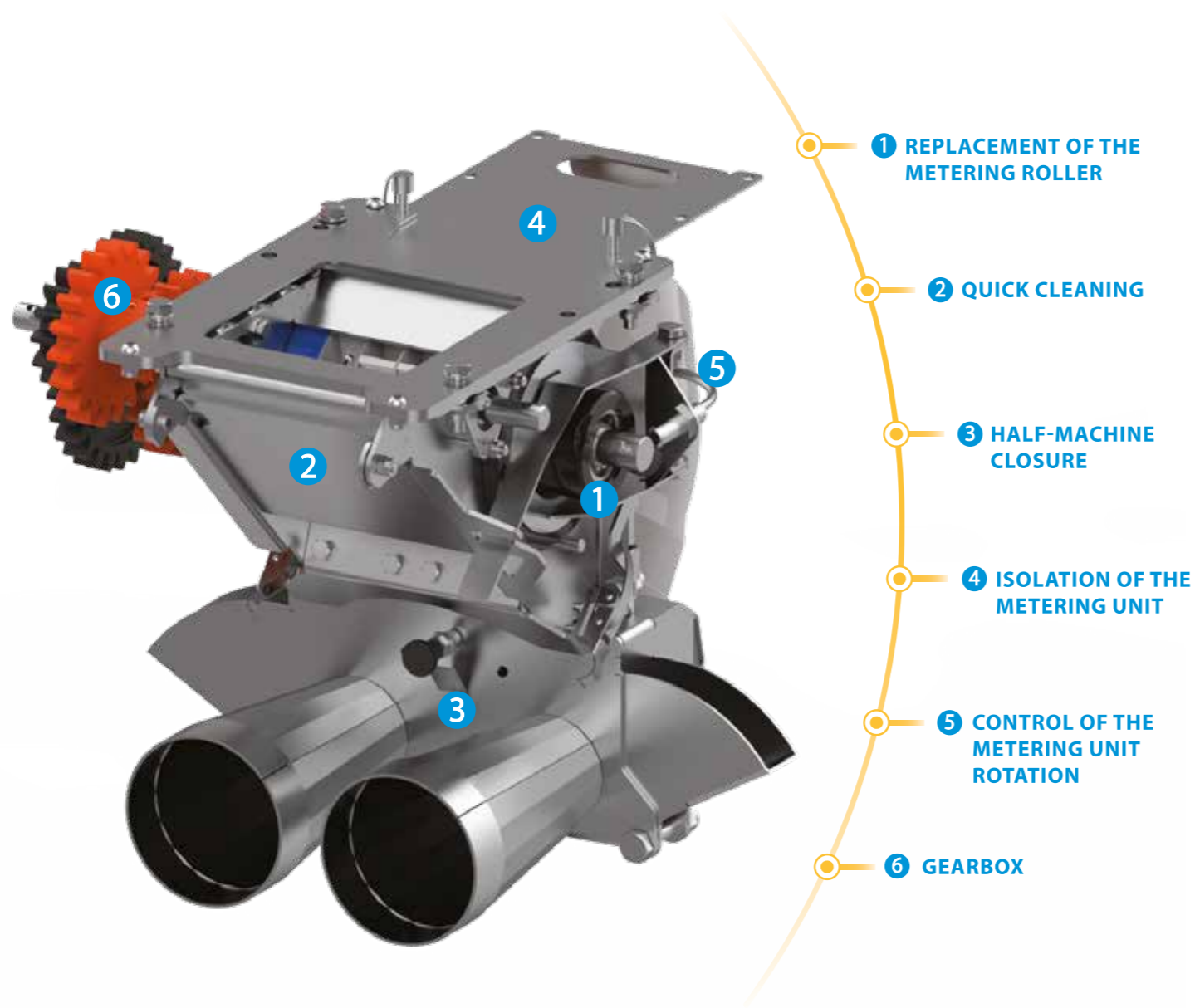
In traditional pneumatic conveying systems the seed distribution head has a natural inaccuracy due to various factors including the inclination where, by gravity, the product tends to concentrate in the lower area. Because of this, important errors can often be detected among the various rows which can lead to non-homogeneous seeding.



AIRON

Precise and delicate dosage
for the utmost respect of the seed

We have designed the new AIRON metering unit to maximize simplicity and ease of use in the seeding test, cleaning and adjustment. Thanks to the 3 interchangeable metering rollers, quickly replaceable, you can distribute various types of seeds (large and small) and with the new closing system you can block sowing on half the machine by choosing between right and left without any constraint.



1 REPLACEMENT OF THE METERING ROLLER

2 QUICK CLEANING

3 HALF-MACHINE CLOSURE

4 ISOLATION OF THE METERING UNIT

5 CONTROL OF THE METERING UNIT ROTATION

6 GEARBOX



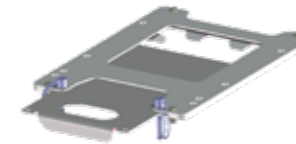
1 REPLACEMENT OF THE METERING ROLLER
The replacement of the metering roller simply occurs through the side access door of the distributor. No special tools are required.



2 QUICK CLEANING
Thanks to the rear opening, the AIRON metering unit is easy to clean.



3 HALF-MACHINE CLOSURE
Thanks to the new system it is possible to set half-width choosing between right and left without any constraint.



4 ISOLATION OF THE METERING UNIT
The guillotine door positioned at the base of the hopper allows to isolate the metering unit. Therefore (for example) it is possible to replace the metering roller even at full load.



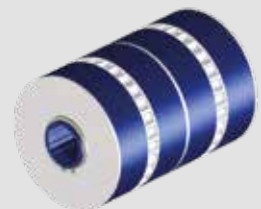
5 CONTROL OF THE METERING UNIT ROTATION
No error is possible thanks to the sensor located on the door of the seeding module that controls the rotation of the metering unit and the correct closing of this.



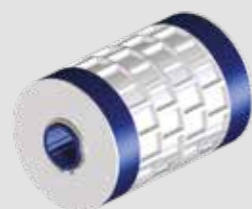
6 GEARBOX
The gearbox combined with the replacement of the metering roller allows greater precision and doubles the possibilities of use.

STANDARD METERING ROLLERS (MOST COMMON DOSAGES):

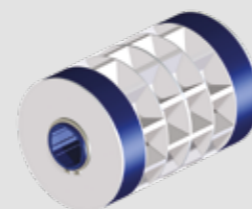
METERING ROLLER 11,5 cm³



METERING ROLLER 110 cm³

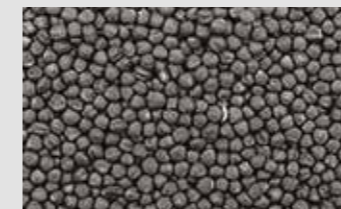


METERING ROLLER 392 cm³



IT CAN BE USED FOR:

RAPSEED



BARLEY



WHEAT



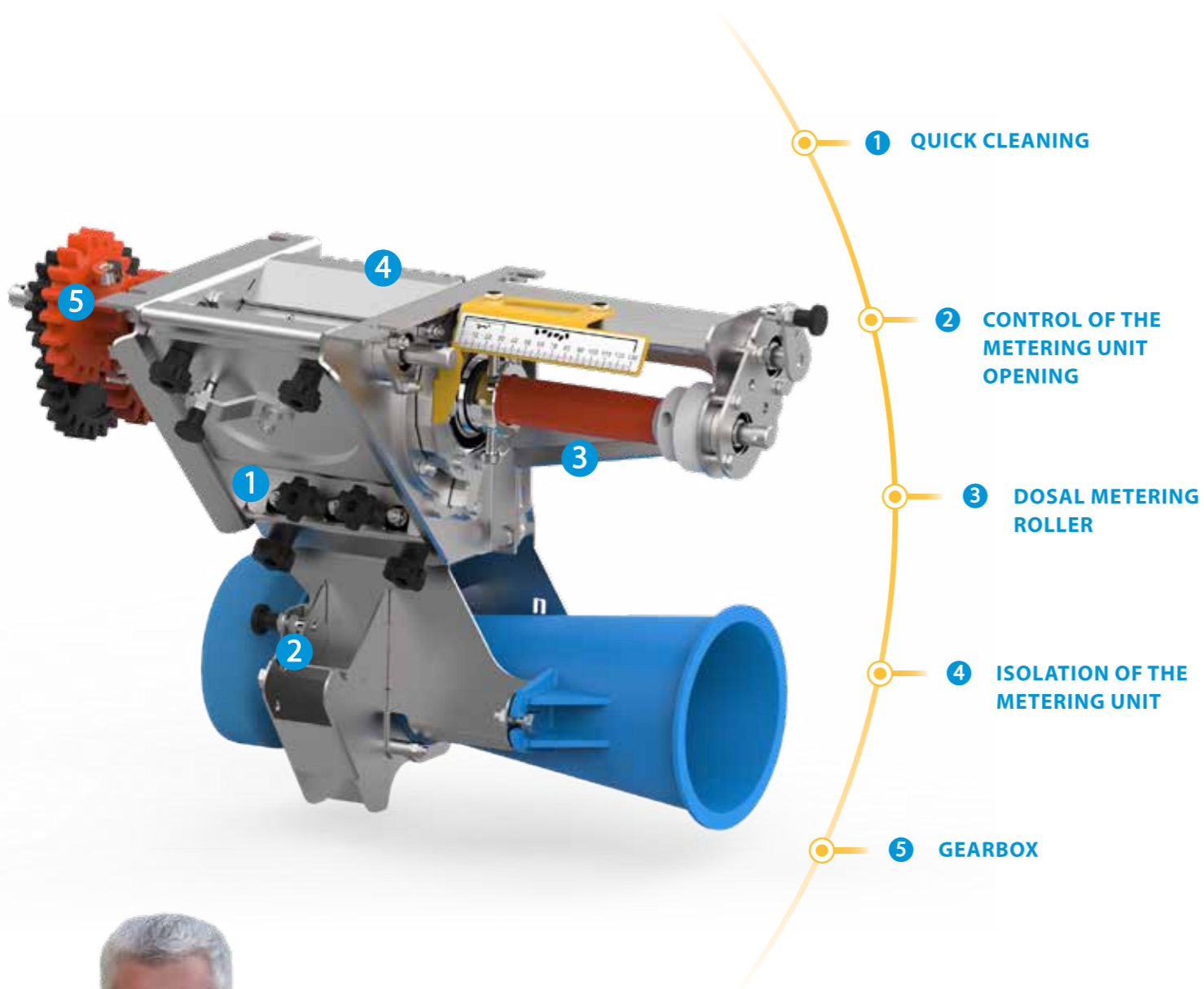
PEAS



DOSAL

Wide flexibility of use of the DOSAL volumetric metering unit: suitable for fine, large seeds and fertilizers with a few simple adjustments. Built with stainless steel anti-wear materials to ensure maximum durability and reliability, it is also suitable for treated seeds or fertilizers.

The high-performance volumetric metering unit Alpego



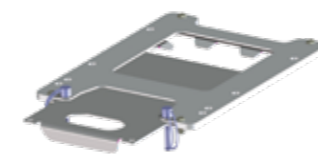
1 QUICK CLEANING
The removable back plate allows a complete and easy cleaning of the metering unit even if it remains unused for several days.



2 CONTROL OF THE METERING UNIT OPENING
The weighing door is equipped with a sensor that prevents any mistake. And it warns the operator if it remains open.



3 DOSAL METERING ROLLER
Designed for high performance, it offers a wide flexibility of use: fertilizer and large seeds in large quantities or very small seeds in very low quantities thanks to the semi-minutes function.



4 ISOLATION OF THE METERING UNIT
The guillotine door positioned at the base of the hopper allows to isolate the metering unit. Therefore (for example) it is possible to change the quantity of seeding.



5 GEARBOX
The lateral gears coupled with the Dosal system allow to increase the number of revolutions and a slow rotation of the metering unit ensuring the preservation of the seeds.



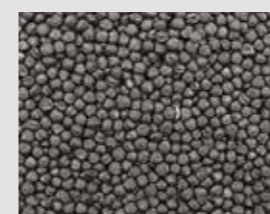
After years of using plastic metering units, we have understood the weak points and, thanks to all the studies and designs we have made, we have created our own Alpego stainless steel metering unit to guarantee maximum performance for our customers and our machines.



David Finetti
Chief sales officer Alpego France

IT CAN BE USED FOR:

RAPESEED



BARLEY



WHEAT



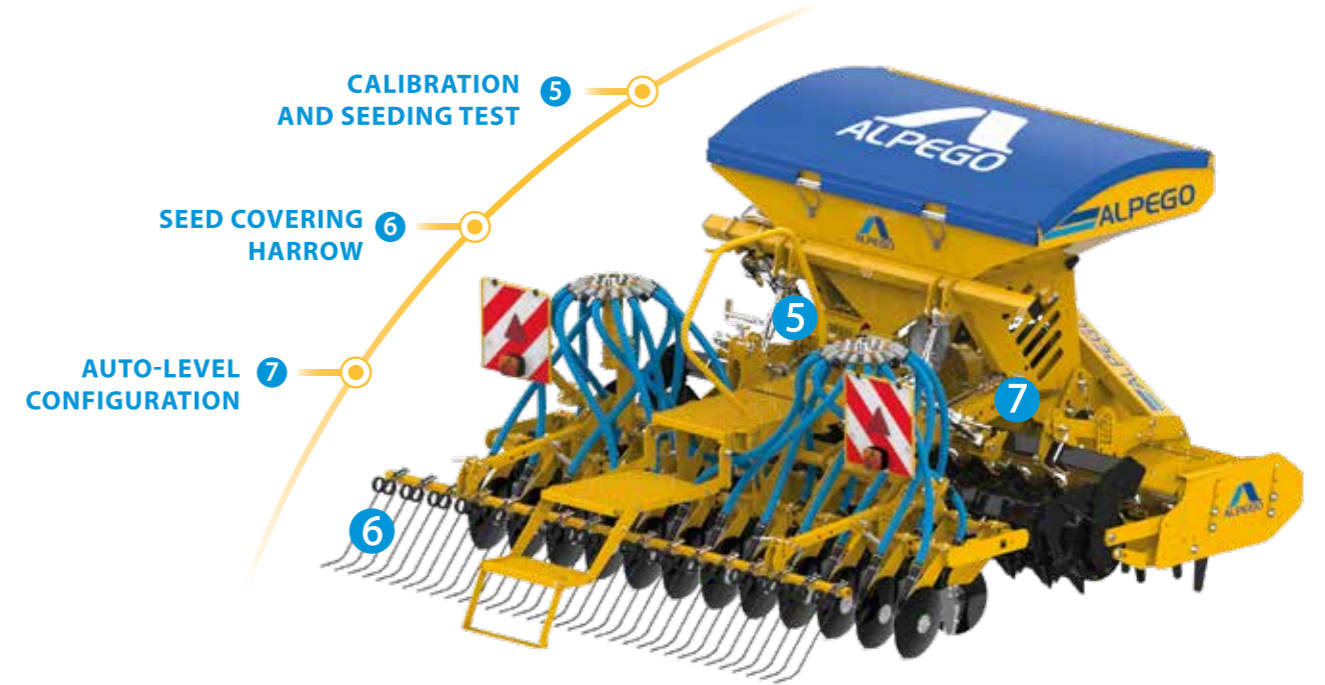
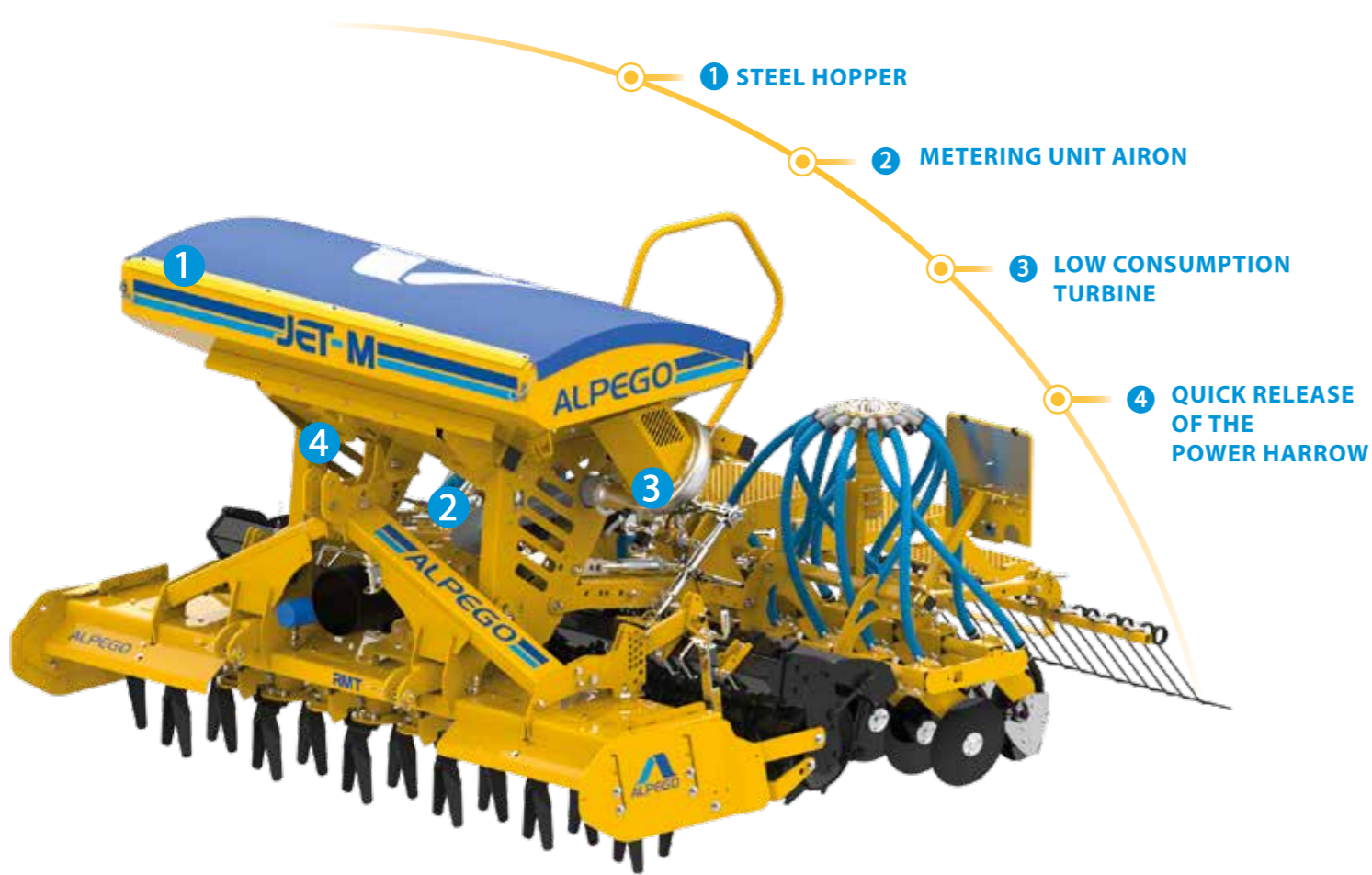
PEAS



FERTILIZER



DOSAL



	JET-M 300	JET-M 350
Working width (cm)	300	350
Transport width (cm)	300	350
Number of seeding rows (nr°)	24	28
Row spacing (cm)	12.5	12.5
Hopper capacity without extension (lt)	1000	1000
Weight of the machine combined with the power harrow BG (FAST Configuration)	2260	-
Weight of the machine combined with the power harrow RMT (AUTO-LEVEL Configuration)	2535	2745
Weight of the machine combined with the power harrow RTEK (AUTO-LEVEL Configuration)	2700	2935



1

STEEL HOPPER

Large capacity (1000 l)
Designed with an advanced center of gravity to be used even with not too heavy tractors. Ergonomic and easy to access thanks to the large and sturdy retractable rear platform.



2

METERING UNIT AIRON

Simple and practical, the new metering unit AIRON is supplied as standard with 3 interchangeable metering rollers covering a wide range of use.



3

LOW CONSUMPTION TURBINE

It consumes only 19 liters / min in standard conditions allowing the use of tractors with reduced oil availability.



4

QUICK RELEASE OF THE POWER HARROW

Whatever the versions, the JET-M has been designed to be coupled as quickly and safely as possible.



5

CALIBRATION AND SEEDING TEST

Easy access to the seeding system. The seeding test is easy thanks to the easy-to-reach position of the calibration button.



6

SEED COVERING HARROW

Rear seed covering harrow centrally adjustable.

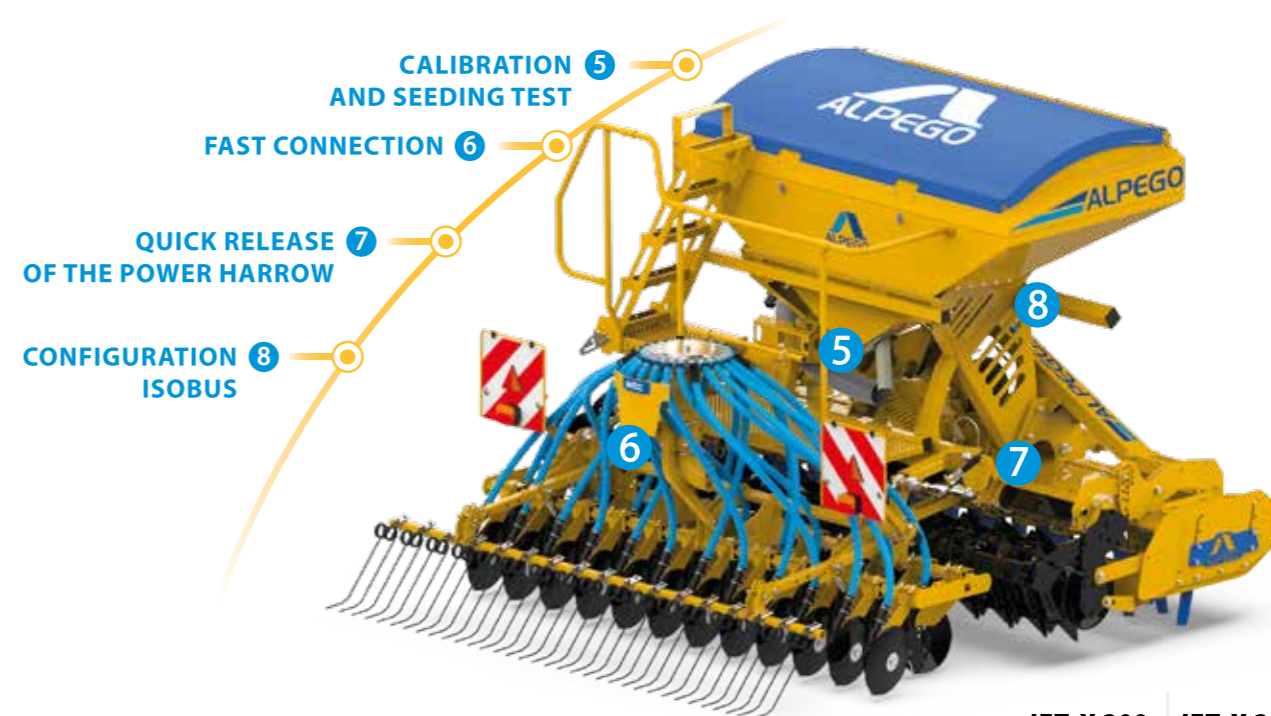
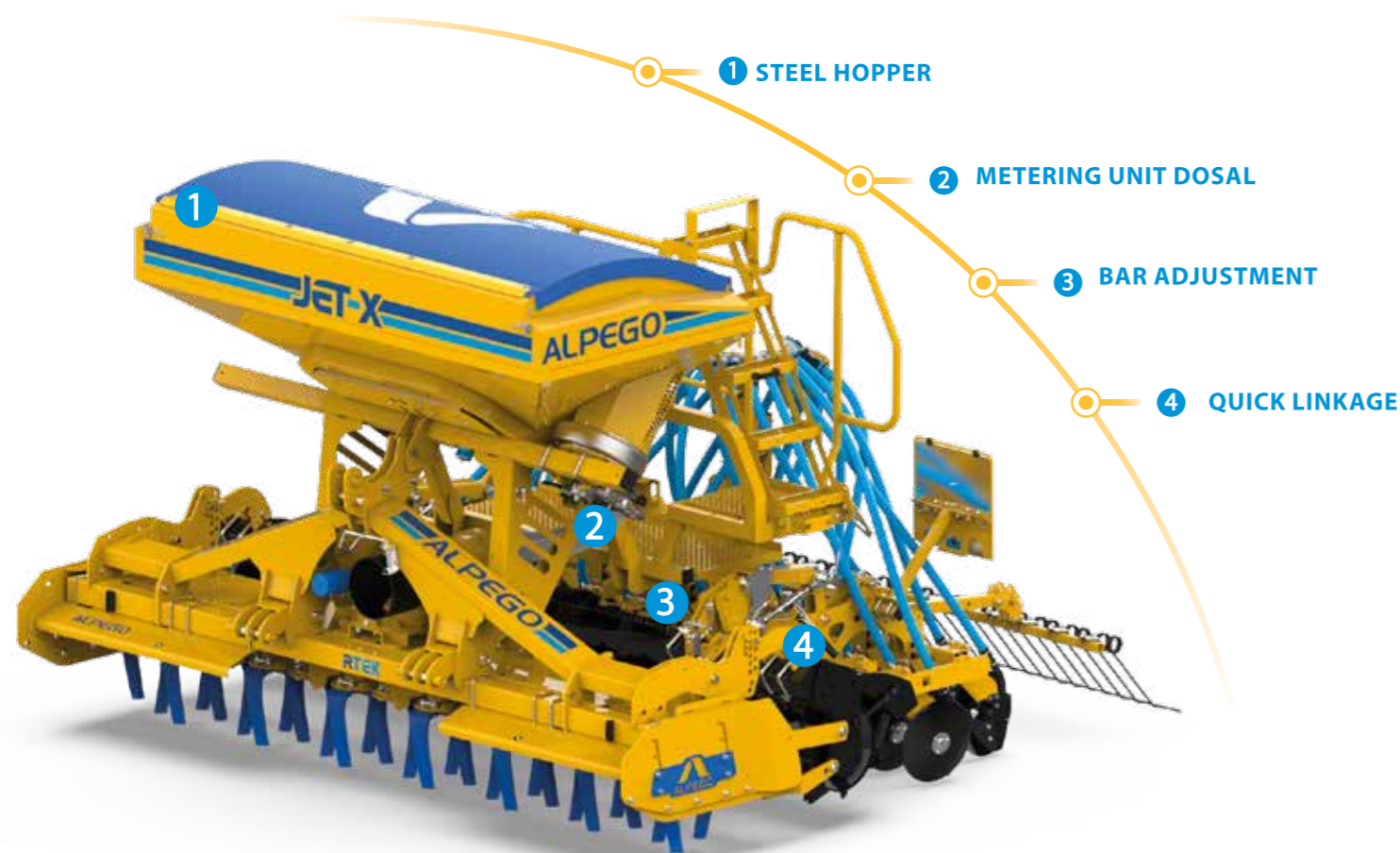


7

FAST AND AUTO-LEVEL CONFIGURATION

FAST: Maximum flexibility configuration that allows the release of the seed-drill from the implement very quickly (in less than 10 minutes) in order to use the power harrow independently.
AUTO-LEVEL: Maximum precision configuration thanks to the bar-roller constraint that allows to maintain the seeding depth even by changing the working depth of the power harrow.

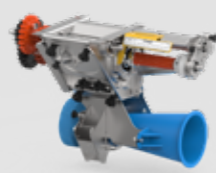
The JET-X pneumatic seed drill is designed for intensive, professional agriculture and is suitable for the toughest conditions. Compatible with a number of Alpego range power harrows, it is able to work in combination with tractors from 120 to 320 HP.



	JET-X 300	JET-X 350	JET-X 400
Working width (cm)	300	350	400
Transport width (cm)	300	350	400
Number of seeding rows (nr°)	24	28	32
Row spacing (cm)	12.5	12.5	12.5
Hopper capacity without extension (lt)	1500	1500	1500
Weight of the machine combined with the power harrow RTEK	2765	3105	3445
Weight of the machine combined with the power harrow RMAX	2900	3275	3630



1 STEEL HOPPER
Of large capacity (1500 l) It has been suitably designed to advance its center of gravity and its ergonomics is guaranteed by the large, robust and easy-to-access rear platform.



2 METERING UNIT DOSAL
The metering unit, entirely made of stainless steel, is very robust and reliable. It offers unparalleled performance and is designed to dose small seeds such as rapeseed up to dose fertilizers even in large quantities.



3 BAR ADJUSTMENT
Quick and easy seeding depth adjustment. A handle with a graduated bar coupled to a parallelogram allows you to set the seeding depth quickly and precisely.



4 QUICK LINKAGE
The new design with two side hooks attached to the sides of the roller allows you to release the seeding bar in no time.



5 CALIBRATION AND SEEDING TEST
The seeding test is facilitated thanks to the easy-to-access calibration button.



6 FAST CONNECTION
All electrical and hydraulic outlets are centralized and disconnect in an instant.



7 QUICK RELEASE OF THE POWER HARROW
The removal of the seed-drill from the power harrow takes place quickly and safely thanks to the quick hook connection that also allows you to disconnect all the electrical and hydraulic sockets.



8 CONFIGURATION ISOBUS
Thanks to the innovative ISOBUS (ISO11783) technology integrated in the front hopper, you have the possibility to control all its functions directly from the tractor screen.

Front hopper
Fertidrill ASMAX
with power harrow



FERTIDRILL System

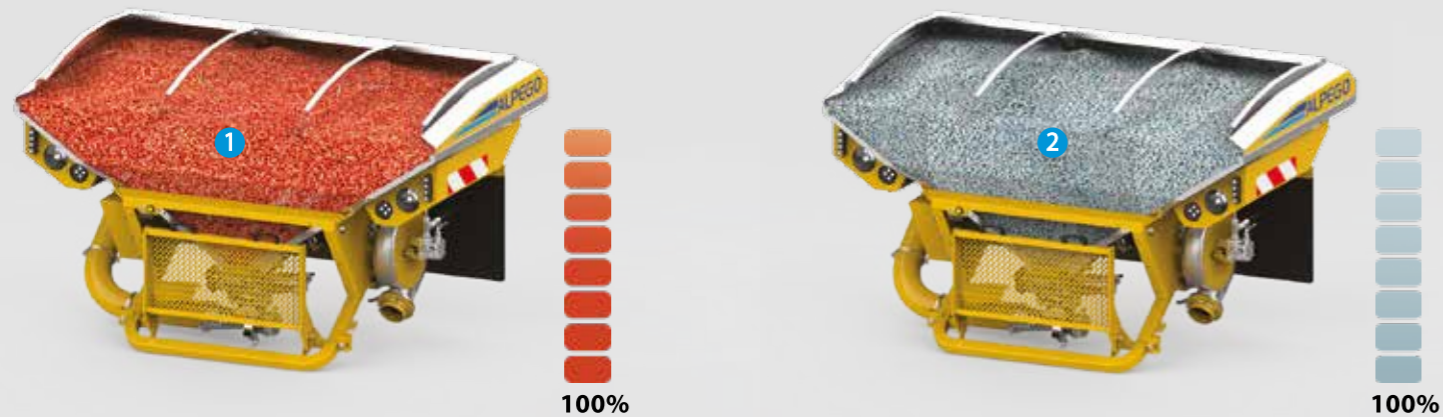
The multifunctional hoppers Fertidrill ASMAX and ASPRO, made of stainless steel, allow you to manage the distribution of both seeds and fertilizers. They are mounted in front of the tractor and allow you to distribute the required volume of product from the seeding unit to the distribution head, allowing multiple combinations also with different types of machines, increasing their versatility of use.

ASPRO

The ASPRO front hopper is designed for use in combination for seeding cereals up to a width of 6m or for the distribution of fertilizer combined with different types of equipment (weeder, precision seed-drill, cultivator ...)

ASMAX

The multifunctional front hopper ASMAX can be used for the simultaneous distribution of seed and fertilizer. In the single product configuration it is designed for sowing cereals up to a width of 8m or for the distribution of fertilizer combined with different types of equipment (weeder, precision seed-drill, cultivator ...).



We have created multiple solutions for sowing and fertilization based on the concept of versatility and the result has been the creation of a range that guarantees the end user many processes, making these machines ideal for those looking for maximum performance.

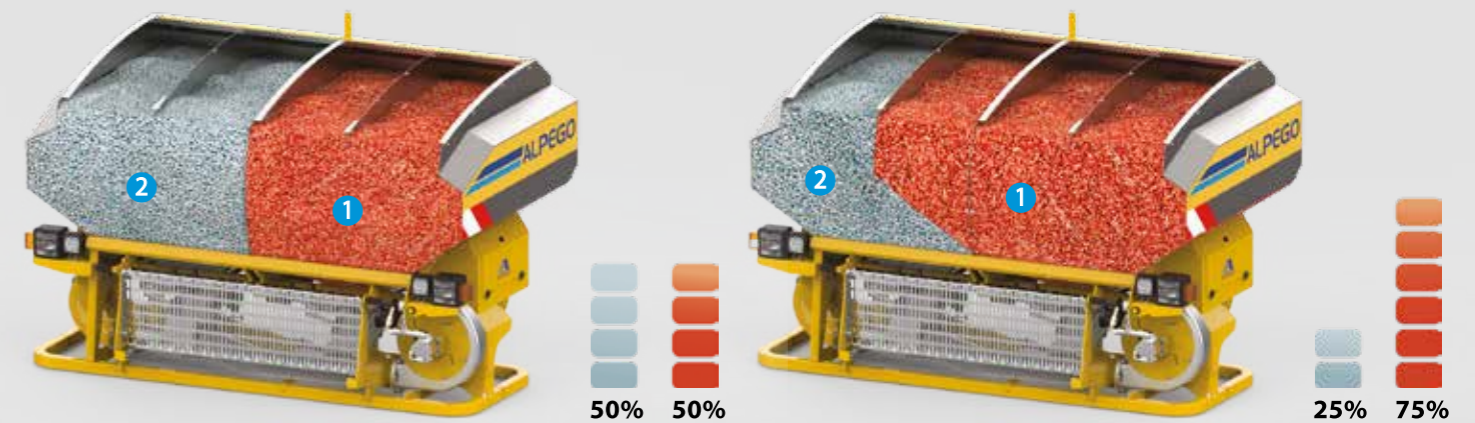
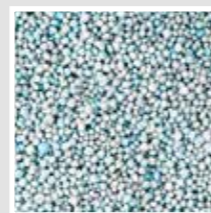


Fabio Bedin
After sales Service

1 SEEDS



2 FERTILIZER



Fertidrill ASPRO with power harrow Alpego

Fertidrill ASPRO with cultivators

Fertidrill ASPRO with precision seed-drill

Fertidrill ASMAX STANDARD with power harrow Alpego

Fertidrill ASMAX BITUBE with power harrow Alpego

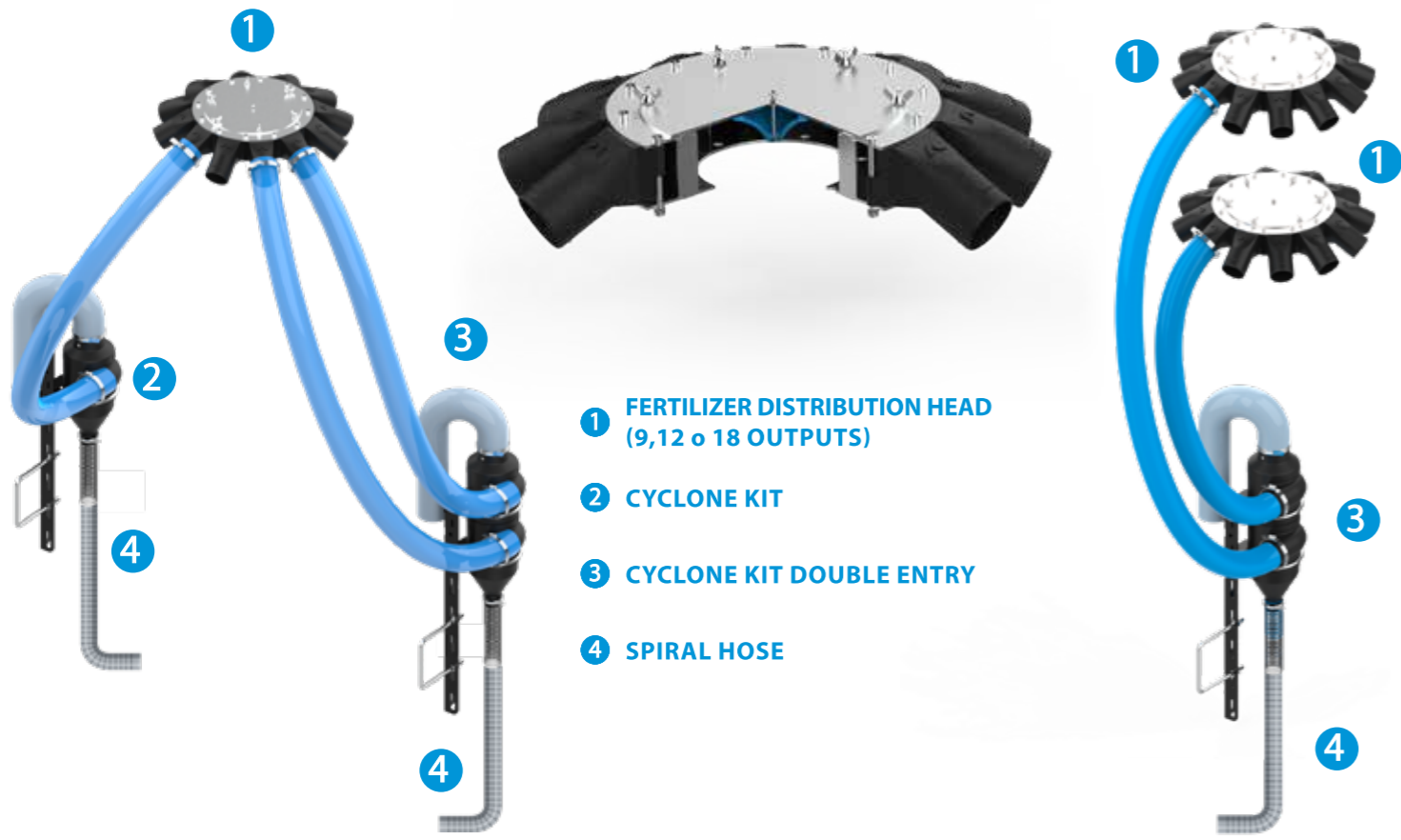
Fertidrill ASMAX with precision seed-drill

AFDS

Distribution Systems

AFDS, a fertiliser distribution system designed for all front hoppers in combination with precision seed drills, weeders and in general all equipment requiring a fertiliser kit. The yield is increased thanks to new distribution heads and new cyclones with \varnothing 60 mm outlets.

Front hopper
Fertidrill ASPRO

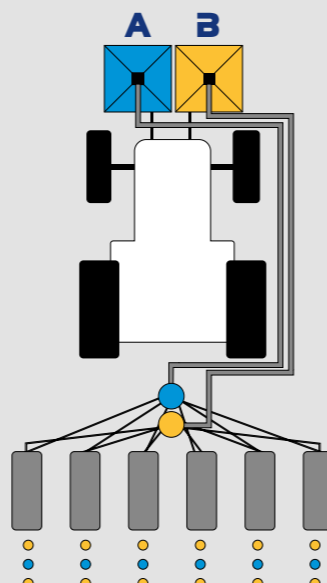
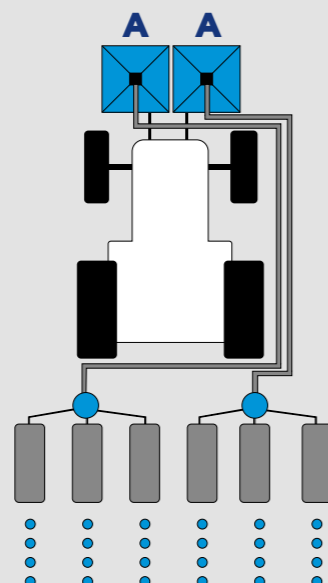
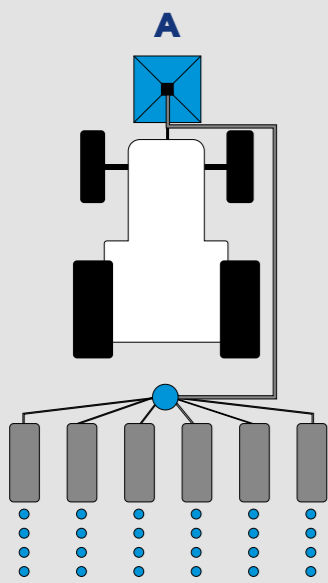


- 1 FERTILIZER DISTRIBUTION HEAD (9,12 o 18 OUTPUTS)
- 2 CYCLONE KIT
- 3 CYCLONE KIT DOUBLE ENTRY
- 4 SPIRAL HOSE

1 PRODUCT
1 METERING UNIT
1 DISTRIBUTION HEAD

1 PRODUCT
2 METERING UNITS
2 PARALLEL DISTRIBUTION HEADS

2 PRODUCTS
2 METERING UNITS
2 CENTRALISED DISTRIBUTION HEADS

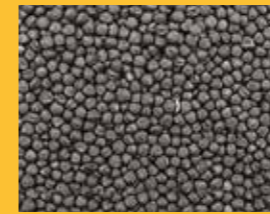


The ASMAX multifunctional hopper is designed for highly professional agriculture, especially in tough, heavy-duty conditions.

With a large load capacity of up to 2300 litres, it is also able to distribute seeds and fertiliser simultaneously. Compatible with a number of Alpego range power and disc harrows, it is able to work in combination with tractors from 120 to 500 HP.

IT CAN BE USED FOR:

RAPESEED



BARLEY



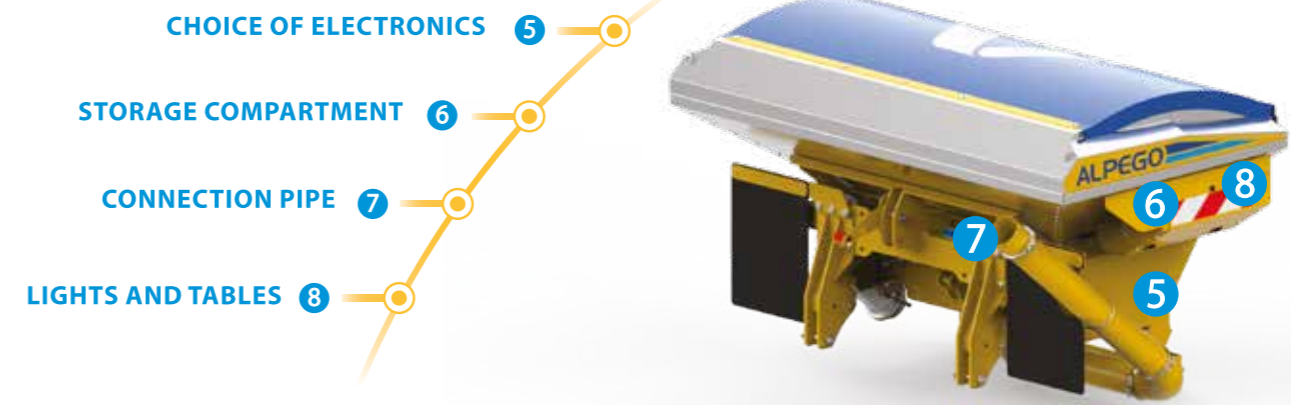
WHEAT



PEAS



FERTILIZER



	ASPRO 300	ASPRO 350	ASPRO 400	ASPRO 450	ASPRO 500	ASPRO 600
Working width (cm)	300	350	400	450	500	600
Transport width (cm)	300	350	400/250	250	250	250
Number of seeding rows (nr°)	24	28	32	36	40	40/48
Row spacing (cm)	12.5	12.5	12.5	12.5	12.5	12.5/15 (nr°40)
Hopper capacity without extension (lt)	1400	1400	1400	1400	1400	1400
Weight of the machine combined with the power harrow RTEK	2860	3200	3465	-	-	-
Weight of the machine combined with the power harrow RMAX	3010	3385	3735	-	-	-
Weight of the machine combined with the power harrow DP	-	-	3985	-	4290	4705
Weight of the machine combined with the power harrow DTEK	-	-	4220	-	4555	5135
Weight of the machine combined with the power harrow DMAX	-	-	-	-	5110	5745
Weight of the machine combined with the disc harrow MG	2660	2780	3050	-	-	-



1

STAINLESS STEEL HOPPER

Large capacity front hopper (1400l) and extendable on request with chamfered profile for better visibility from the tractor (+ 20%). Totally in stainless steel it can be used for sowing or fertilization.



2

METERING UNIT DOSAL

The metering unit, entirely made of stainless steel, is very robust and reliable. It offers unparalleled performance and is designed to dose small seeds such as rapeseed up to dose fertilizers even in large quantities.



3

CALIBRATION AND SEEDING TEST

Easy access to the seeding system. The seeding test is easy thanks to the easy-to-reach position of the calibration button.



4

ELECTRIC MOTOR

Electric motor upgraded to 250 W to guarantee the performance of the Dosal metering unit.



5

CHOICE OF ELECTRONICS

The hopper is equipped with fully electronic seeding management. In the ISOBUS electronically controlled version the machine is fully controlled from the tractor monitor, taking advantage of all compatible functions and specific Task Controller.



6

STORAGE COMPARTMENT

Convenient storage compartment with door, essential for holding the weighing kit and necessary tools.



7

CONNECTION PIPE

Front/rear connection kit including tubing, cable extensions and adjustable bracket.



8

LIGHTS AND TABLES

LED front lights (low beam/ high beam), LED working lights and reflective front and side tables.

Configuration

Excellent versatility for any application

To make the front hopper increasingly suitable for the needs of farmers who are always looking for the best from their machines, Alpego has designed the ASPRO front hopper that can be used in two different settings.

STANDARD:

Alpego solution for combined seeding of cereals up to 8m

FERTILIZER:

Solution for fertilization in combination with various machines (single seeders, sachers, cultivators ...)

In the standard configuration, the power harrow and the seeding bar close at 2,5m width for road transport.



Centralized distribution head

STANDARD



The standard configuration includes the front hopper, the relative seeding bars and the **centralized distribution head, fixed on the bar**, and equipped with the Tram-Line system for managing the tractor passes. The width during road transport is 2.5 m.

	3m	3,5m	4m	4,5m	5m	6m	7m	8m
Rigid Power harrow RMT	■	■	■					
Rigid Power harrow RTEK	■	■	■					
Rigid Power harrow RMAX	■	■	■					
Foldable Power harrow DP			■		■	■		
Foldable Power harrow DTEK			■	■	■	■		
Foldable Power harrow DMAX				■	■	■		
Disc harrow Maratona MG	■	■	■					

FERTILIZER



The fertilizer configuration, with a dedicated distribution head, provides the front hopper in combination with various machines: weeders, precision seed-drills, cultivators, rollers, etc ...



Quick release system of the seeding bar from the power harrow.



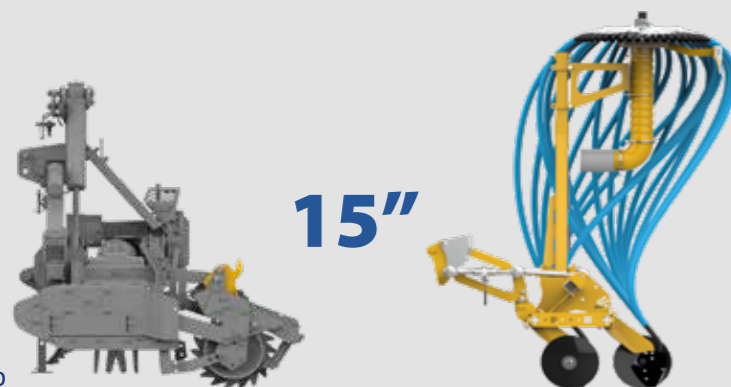
The intervention of the coulters on the ground is minimal to avoid loss of moisture from the soil, mix wet and dry soil near the seed or reduce water conductivity from the lowest layers to the surface.



Mattia Trevini
Doctor Agronomist



15"



1

QUICK RELEASE OF THE SEEDING BAR

The seeding bar can be removed quickly and safely in just 15 minutes thanks to the quick-release parallelogram system on the roller. The folding versions are equipped with parking feet as standard.

2

DISTRIBUTION HEAD FIXED ON THE SEEDING BAR

Centralised distribution head fixed on the seeding bar (fixed and folding versions) to speed up safe coupling and uncoupling operations.

3

ADDITIONAL DISTRIBUTION HEAD FOR FERTILIZER

A dedicated distribution head with a reduced number of outlets is available for the distribution of fertilizer combined with different types of equipment.

4

COMBINATION

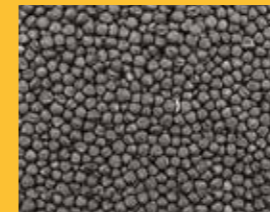
The hopper can be combined with various types of machines for fertilizing or seeding.

The ASMAX multifunctional hopper is designed for highly professional agriculture, especially in tough, heavy-duty conditions.

With a large load capacity of up to 2300 litres, it is also able to distribute seeds and fertiliser simultaneously. Compatible with a number of Alpego range power and disc harrows, it is able to work in combination with tractors from 120 to 500 HP.

IT CAN BE USED FOR:

RAPESEED



BARLEY



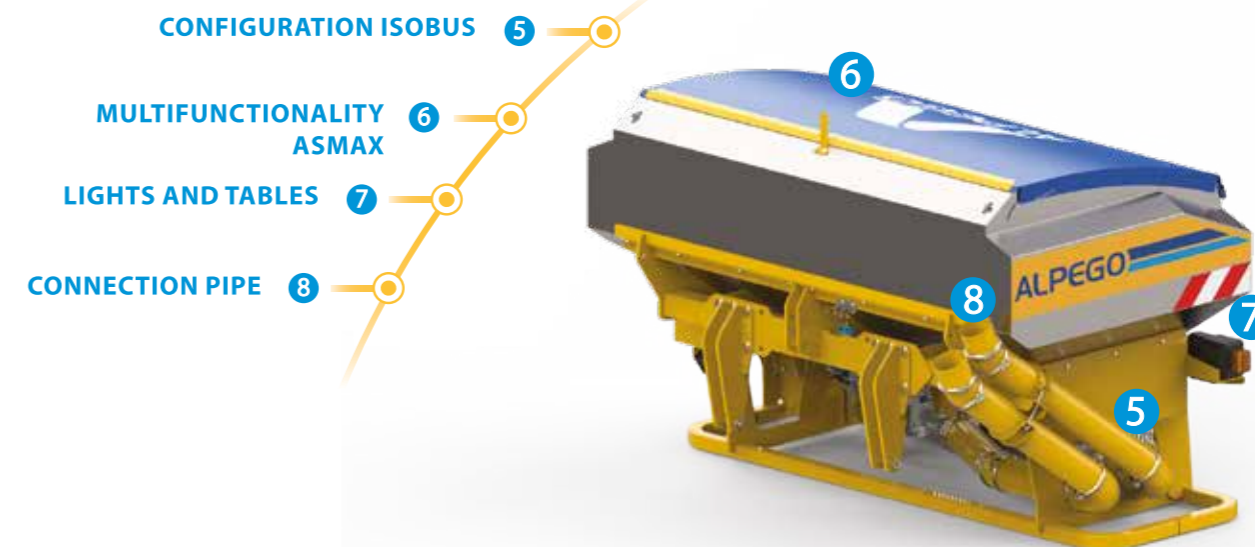
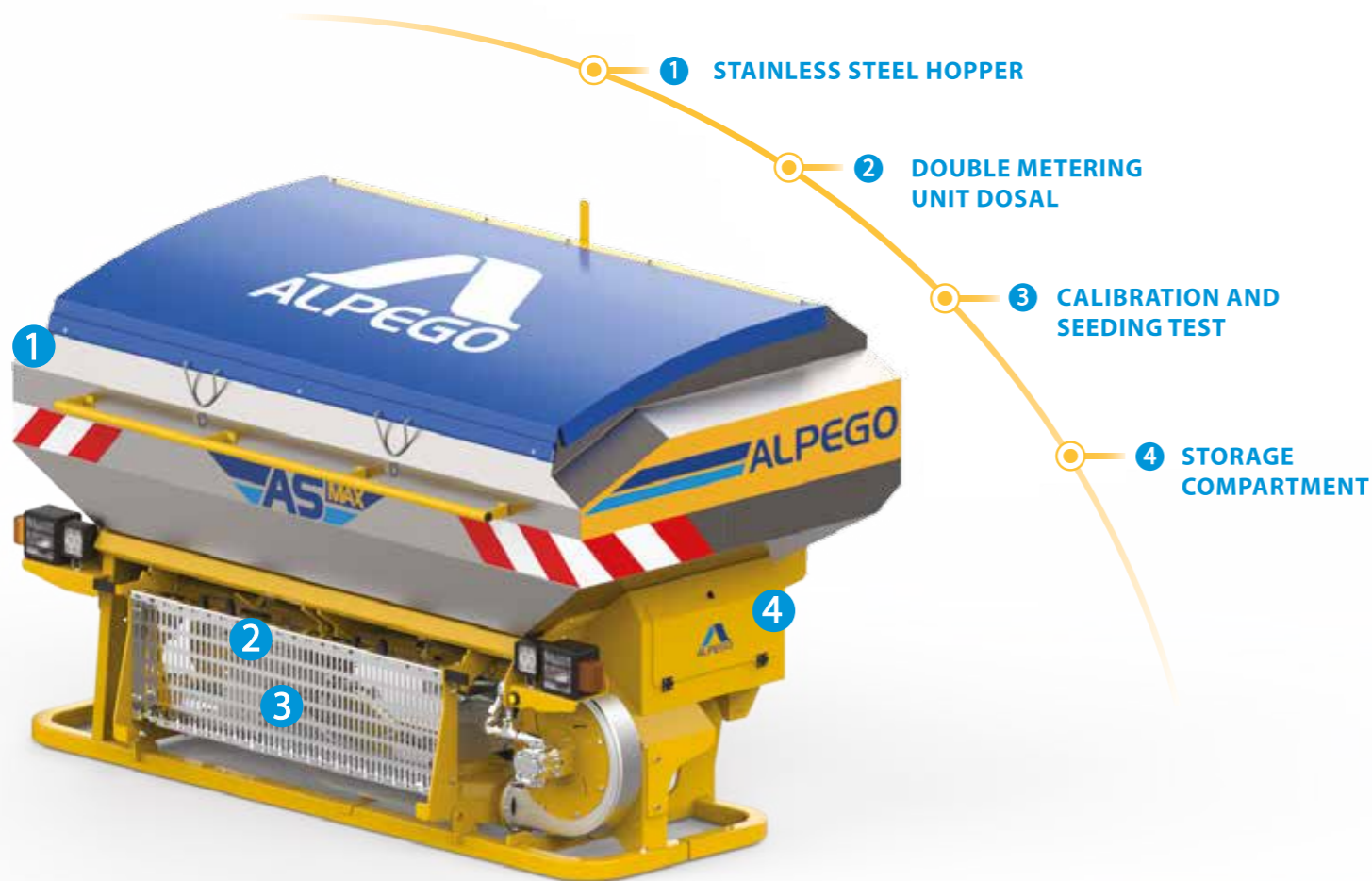
WHEAT



FERTILIZER



FERTILIZER AND SEED



	ASMAX 400	ASMAX 450	ASMAX 500	ASMAX 600	ASMAX 700	ASMAX 800
Working width (cm)	400	450	500	600	700	800
Transport width (cm)	250	250	250	250	250	250
Number of seeding rows (nr°)	32	36	40	48	54	62
Row spacing (cm)	12.5	12.5	12.5	12.5/15 (Nr*40)	12.5	12.5
Hopper capacity without extension (lt)	2300	2300	2300	2300	2300	2300
Weight of the machine combined with the power harrow DTEK	4640	4865	5060	5745	-	-
Weight of the machine combined with the power harrow DMAX	-	5330	6105	6160	7175	7770



1 STAINLESS STEEL HOPPER
Large capacity hopper (2300l). Totally in stainless steel.



2 DOUBLE METERING UNIT DOSAL
The metering units, entirely made of stainless steel, are very robust and reliable. They offer unparalleled performance and are designed to dose small seeds or fertilizers.



3 CALIBRATION AND SEEDING TEST
Easy access to the seeding system. The seeding test is easy thanks to the easy-to-reach position of the calibration button.



4 STORAGE COMPARTMENT
Convenient storage compartment with door, essential for holding the weighing kit and necessary tools.



5 CONFIGURATION ISOBUS
Thanks to the innovative ISOBUS (ISO11783) technology integrated in the front hopper, you have the possibility to control all its functions directly from the tractor screen.



6 MULTIFUNCTIONALITY ASMAX
It can be used for the simultaneous distribution of seed and fertilizer or for sowing up to a width of 8m or for the distribution of fertilizer in combination with different types of equipment.



7 LIGHTS AND TABLES
LED front lights (low beam/ high beam), LED working lights and reflective front and side tables.



8 CONNECTION PIPE
Front/rear connection kit including tubing, cable extensions and adjustable bracket.



Configuration

Excellent versatility for any application

To make the front hopper increasingly suitable for the needs of farmers who are always looking for the best from their machines, Alpego has designed the front hopper ASMAX that can be used in three different settings.

STANDARD:

Alpego solution for combined sowing up to 8m

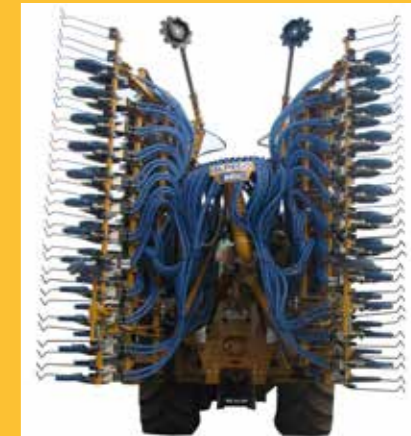
BITUBE:

Alpego solution for simultaneous seeding and fertilization up to 6m

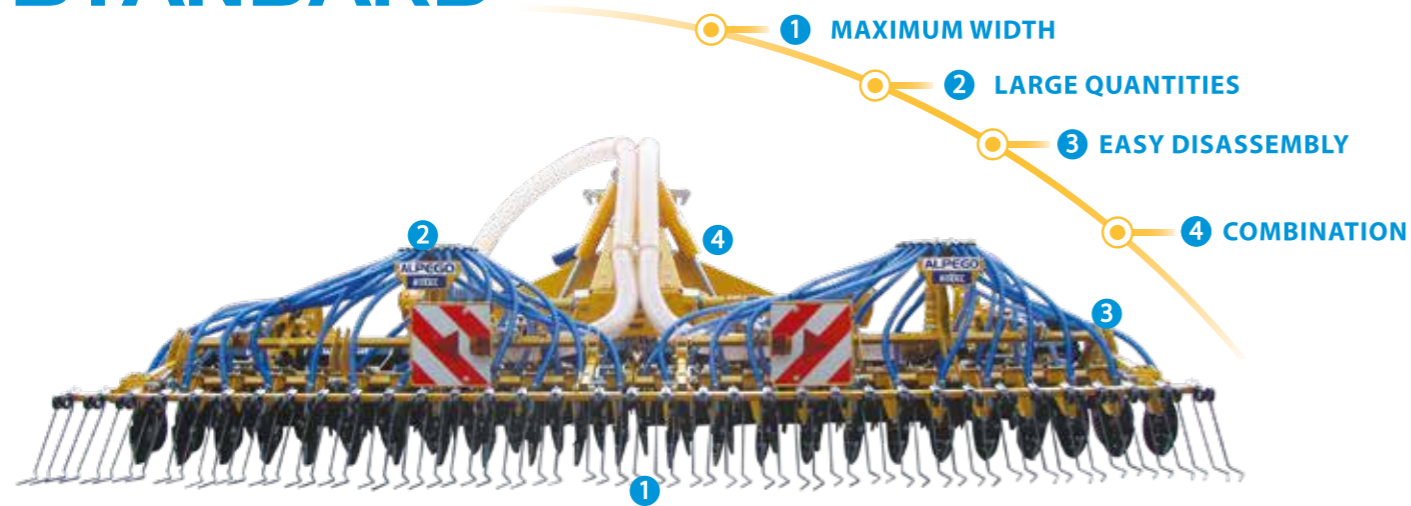
FERTILIZER:

solution for fertilization in combination with various machines (precision seed-drills, weeders, cultivators)

In the standard and Bitube configuration, the power harrow and the seeding bar close at 2.5m in width for road transport.



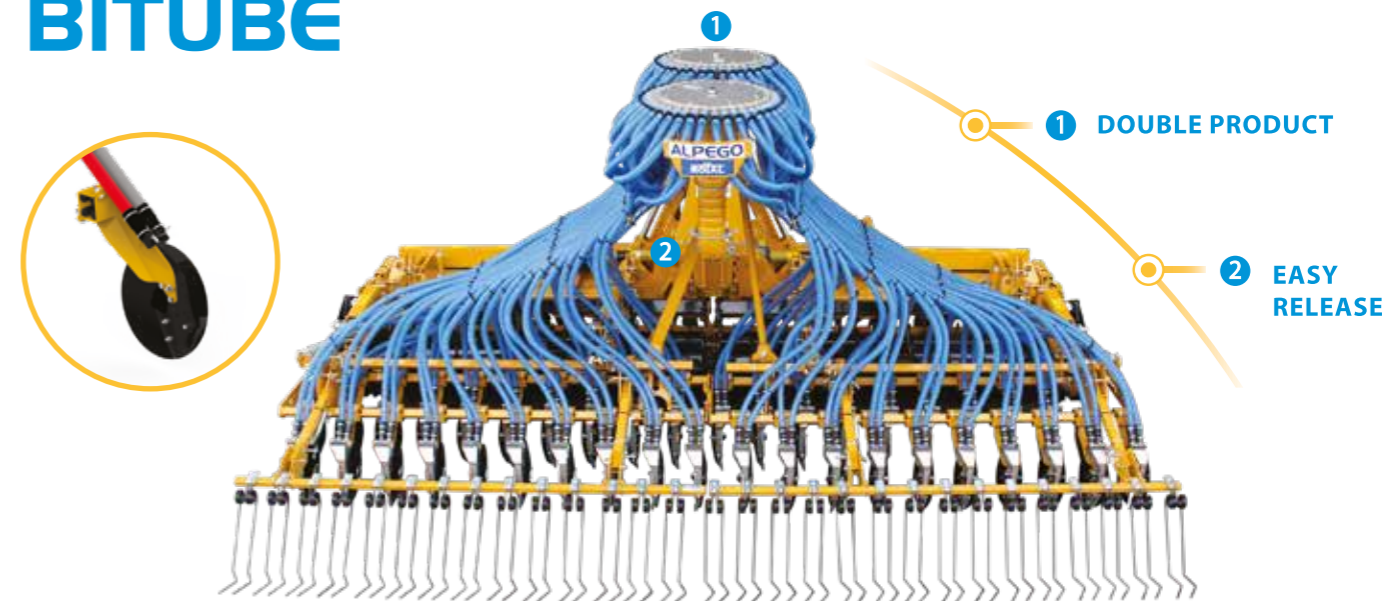
STANDARD



The standard configuration consists of: front hopper, the relative seeding bars and the centralized distribution head fixed on the seeding bars (with the possibility of mounting the Tram-Line system on the distribution head for managing the tractor passes).

	4m	4,5m	5m	6m	7m	8m
Foldable Power harrows DTEK 						
Foldable Power harrows DMAX 						

BITUBE



The BITUBE configuration consists of: front hopper, the relative seeding bars and the double centralized distribution head fixed on the seeding bars (with the possibility of mounting the Tram-Line system on the distribution head for managing the tractor passes).

	4m	4,5m	5m	6m	7m	8m
Foldable Power harrows DTEK 						
Foldable Power harrows DMAX 						

1

MAXIMUM WIDTH

The seeding combination can reach 8m working width, making the Alpego solution unique on the market thanks to the high power available.

2

LARGE QUANTITIES

Studied, designed and built to maximize seeding and fertilization, both thanks to the very large working width and the technologies available.

3

EASY DISASSEMBLY

Dismantling is facilitated by the integration of the distribution system with the seeding bar. Furthermore, all hydraulic and electrical outlets can be disconnected through the use of quick couplings.

4

COMBINATION

The front hopper can be combined with folding power harrows, from a width of 4 to 8m.

1

DOUBLE PRODUCT

Through the two centralized distribution heads with independent joints, the seeds and fertilizer are simultaneously deposited in the ground making this configuration indispensable for those looking for maximum yield from a single machine.

2










EASY RELEASE

The dismantling of the seeding bars is quick and safe thanks to the union of the two distribution heads with the bars in a single body and the presence of quick couplings for all the hydraulic and electrical outlets.

Which implement for which seed-drill?

Just choose according to your needs

The combined machines ALPEGO offer cutting-edge solutions thanks to many years of experience in tillage and sowing. They have been designed for difficult working conditions and they guarantee maximum reliability and versatility.

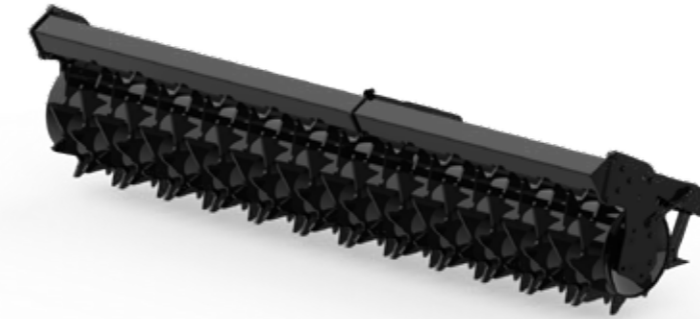
		JET-M	JET-X	ASPRO	ASMAX
BG	 BG is ideal for soil preparation and combined seeding with low weights.	* only for FAST version			
RMT	 Featuring TWIN FORCE TEK mechanics with tapered bearings, RMT is the ideal combination tool for anyone in search of high performance together with light weight.				
RTEK	 Thanks to its TWIN FORCE TEK mechanics and structural frame, RTEK is designed to support even heavy seed drills. It guarantees high forward speed and outstanding performance.				
RMAX	 High-range power harrow, designed for the most difficult conditions. This machine is suitable for high power and is equipped with the TWIN FORCE MAX.				
DP	 With the right trade-off between weight and performance, DP is the ideal choice for anyone seeking a folding seeding combination with relatively light weight.				
DTEK	 DTEK benefits from the TWIN FORCE TEK mechanics, a blend of reliability, ruggedness and performance. Equipped with very reliable gearboxes, it offers the perfect trade-off between light weight and high performance.				
DMAX	 The Alpego top-of-the-range model, DMAX is designed for very powerful tractors and seeding combinations intended for the most heavy-duty uses.				
MG	 MG enables operation even with crop residues present, with uniform tilling, energy saving, no maintenance and lower costs.				
MK	 MK provides the benefits of a disc harrow with working width up to 6 metres and the convenience of a folding machine closing down to 2.5 m.				

The choice of the roller

For a perfect compaction of the soil

The rear roller performs the function of recompacting the seed bed after tillage.

Alpego offers a wide range of rollers, for an optimal processing result.



PACKER ROLLER

The PACKER roller is the versatile roller for excellence. It offers a distribution of weights on the entire surface. With a diameter of 480, 520 or 570 mm, there is a limited risk of jamming even when the soil is sticky or in the presence of crop residues. The centrally adjustable and accessible scrapers guarantee perfect cleaning. The packer roller can work both alone and combined, its versatility allows it to work on light, clayey, silty, dry and hard soils.



TRAPEZE ROLLER

The notched cast-iron roller ridges are spaced 12.5 cm or 15 cm depending on row spacing. With its diameter of 505 mm, it combines a perfect rotation and a pressing of the seeding line. Designed for the combination can also work alone. It adapts perfectly to all types of dry or wet soil, even in the presence of stones or crop residues.



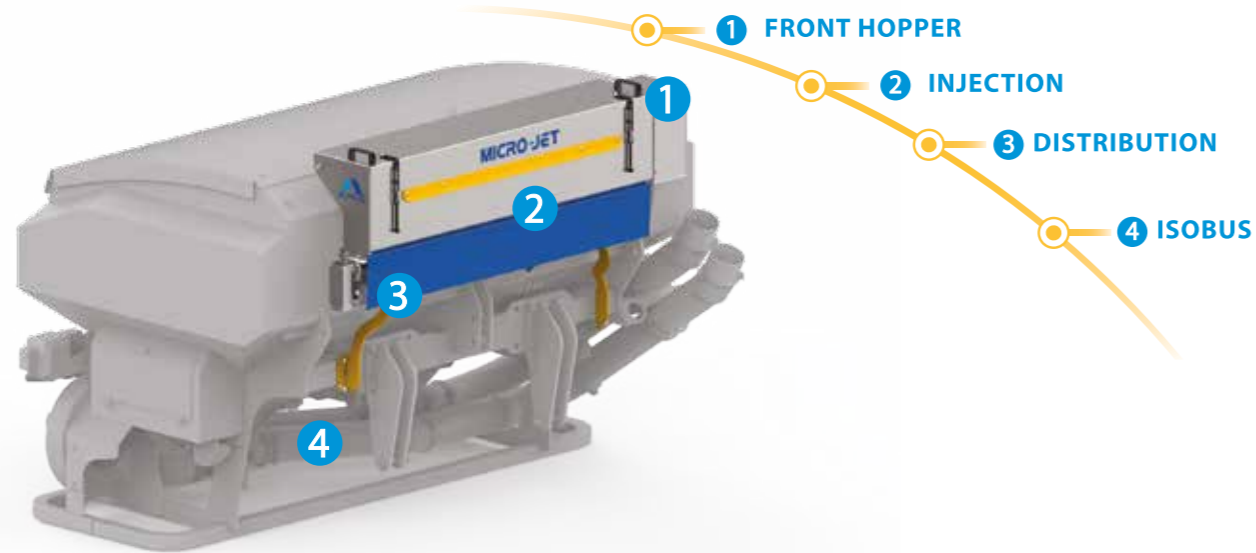
RUBBER ROLLER

This roller is rubber-coated with the ridges spaced 12.5 cm. The roller is intended for light, wet or clay soils, and it compacts the furrow in which the seed will be laid. The rubber-covered surface does not allow the soil to stick, especially in the presence of very tacky and sticky soils, however it is not advisable to use in presence of stones. (ø 500 mm)

MICRO-JET

Microgranulator for granular products or small seeds with a capacity of 120 litres, forced product injection directly into the metering unit and fully electric distribution with ISOBUS control.

Additional microgranulator



MICRO-JET AS^{PRO}



2 PRODUCTS DISTRIBUTED

MICRO-JET AS^{MAX}



3 PRODUCTS DISTRIBUTED*
*in bitube configuration

1

FRONT HOPPER

Stainless steel front hopper with a volume of 120 litres designed for mounting on Alpego multi-purpose hoppers (ISOBUS versions only). Cannot be supplied individually, separated from the seed drill.

2

INJECTION

Forced injection of the product with a blowing system directly into the DOSAL metering unit(s), to be distributed together with the main product(s).

3

DISTRIBUTION

Fully electronic product distribution with 12VDC gear motor (ratios to be chosen for different volumes).

4

ISOBUS

Using the machine with the ISOBUS Universal Terminal main monitor. Exploitation of all tasks such as: VRT, TC-GEO, TC-SC and 1/2 machine and Tram-Line.

Which accessory for which seeder?

For perfect sowing of the soil



KIT SUPPORT LEGS



HYDRAULIC ROW MARKER



HYDRAULIC BAR EXCLUSION



HOPPER EXTENSION STAINLESS STEEL + 250 LITERS



KIT TRAM-LINE



KIT PRE-EMERGENCE DISCS



KIT LID ROTAL HALF-WIDTH



RESTRICTOR ELEMENT OF THE DISTRIBUTION HEAD



DISC DEPTH CONTROL WHEEL



KIT SUPPORTING AUTO-STEERING WHEELS (ø 740MM)



SUPPLEMENTARY BALLAST (25 KG EACH)



SINGLE/DOUBLE SEED TRANSPORT PIPE KIT

Options	JET-M	JET-X	ASPRO	ASMAX
Kit support legs				
Kit pre-emergence discs				
Hydraulic bar exclusion				
Hopper extension stainless steel + 250 liters				
Kit Tram-Line				
Kit pre-emergence discs				
Kit lid rotal half-width				
Restrictor element of the distribution head				
Disc depth control wheel				
Kit supporting auto-steering wheels (ø 740mm)				
Supplementary ballast (25 kg each)				
Single/double seed transport pipe kit (in addition – not standard)				
Microjet				

Option Standard Not available

FOLDABLE POWER HARROWS

120 - 500 HP



RIGID POWER HARROWS

35 - 320 HP



SUBSOILERS

75 - 500 HP



ROTARY TILLERS AND STONE BURIERS

75 - 500 HP



SEED-DRILLS

75 - 320 HP



FRONT HOPPERS

120 - 500 HP



CULTIVATORS

120 - 300 HP



FLAIL MOWERS

40-220 HP

