

I. General.....	2
II. Prepare the Spreader	2
a. Drill the frame of the hopper	2
b. Drill the main deflector	3
III. Fitting the deflector	5
c. Fixing bracket	5
d. Fixing the deflector	6
e. Fix the extending deflector	7
IV. Adjust the deflector	8
V. Verification.....	8

X4D319-Assembly instructions Border spreading plate



I. General

!/! All inox screws must be coated by grease

!/! Before any final blocking adjust all of the screws

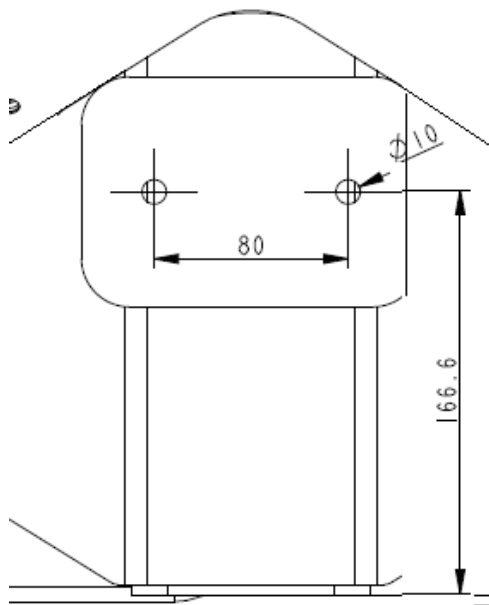
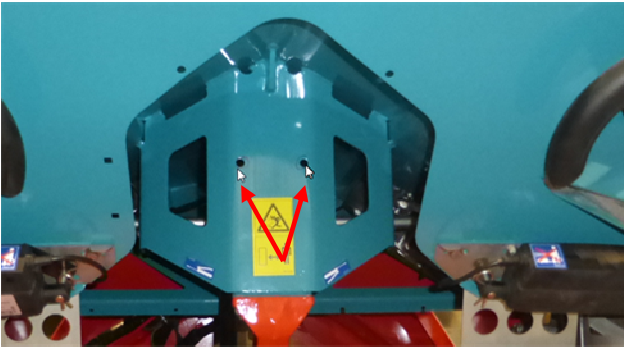
!/! Follow these instructions step by step

!/! Use safety equipments Gloves etc...

!/! System use springs, be careful your fingers

II. Prepare the Spreader

a. Drill the frame of the hopper



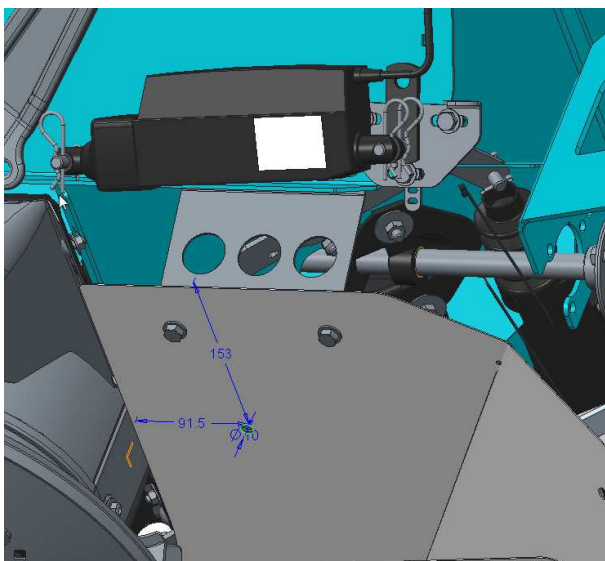
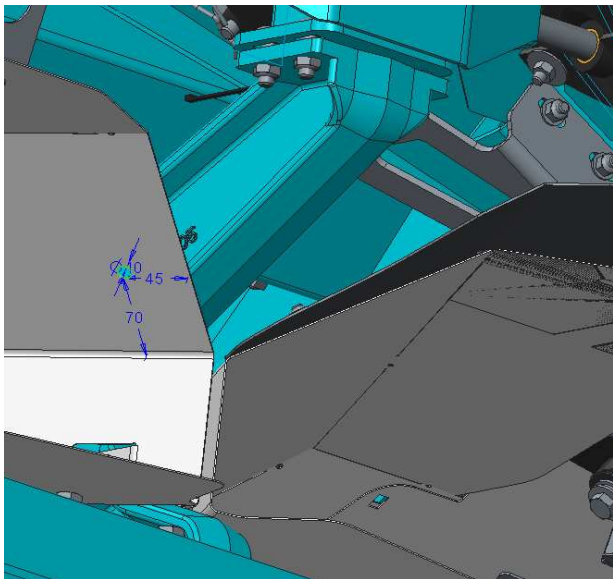
-Drill 2 holes $\varnothing 10$ (enclosed drawing)

-Paint the holes

X4D319-Assembly instructions Border spreading plate



b. Drill the main deflector

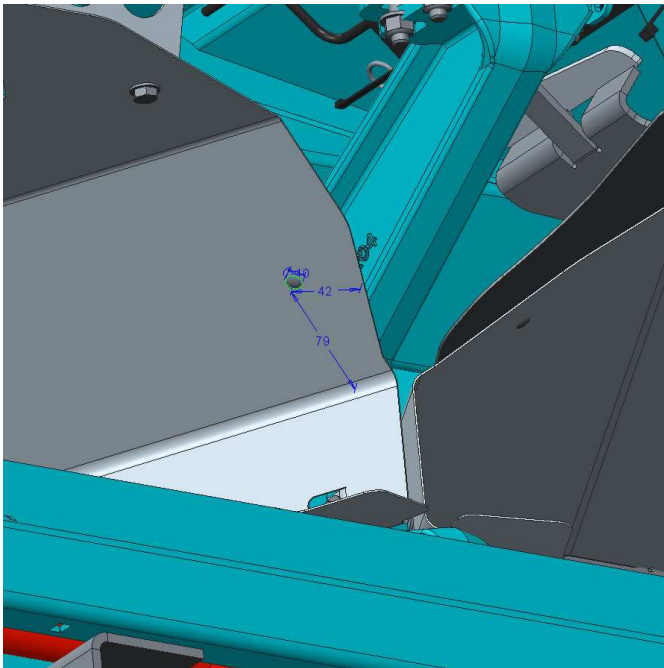


For X50

- Drill 2 holes $\varnothing 10$ in the main left deflector
- For more information look pictures besides

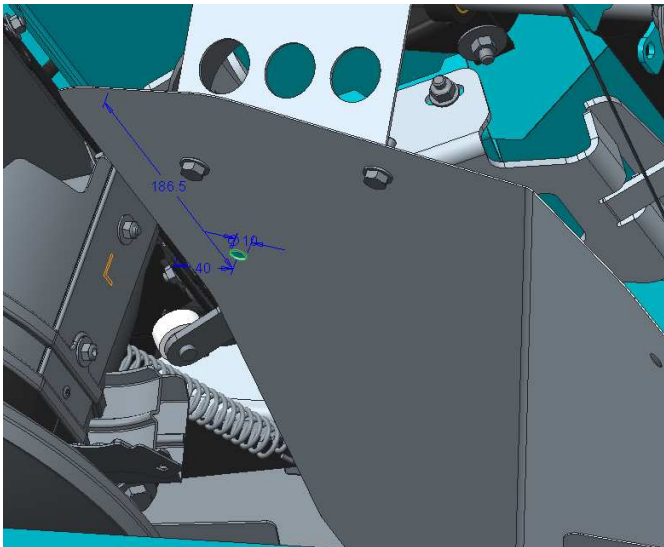
-Repeat the operation in the other side

X4D319-Assembly instructions Border spreading plate



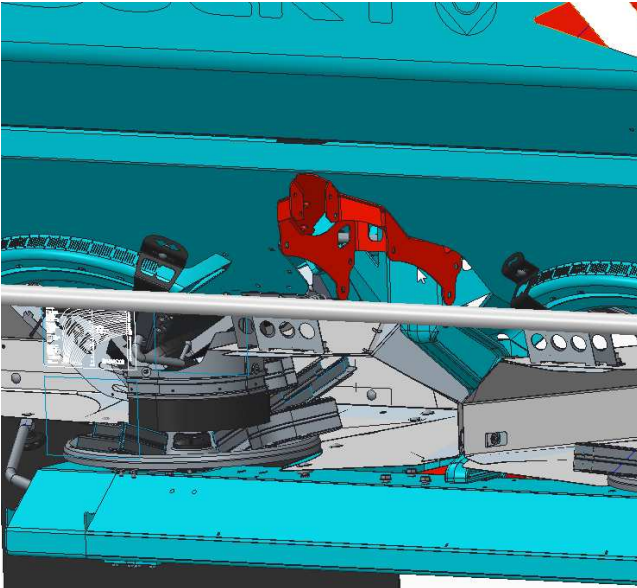
For X40

- Drill 2 holes $\varnothing 10$ in the main left deflector
- For more information look pictures besides

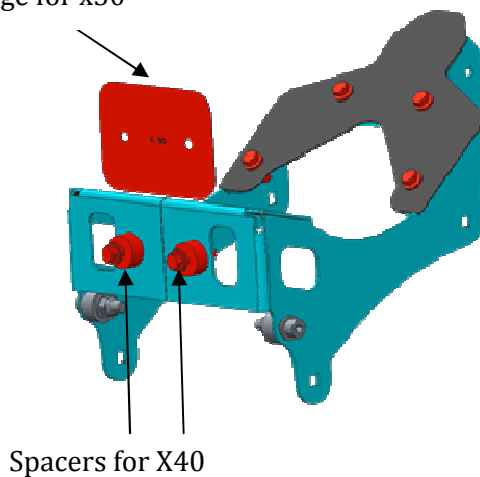


III. Fitting the deflector

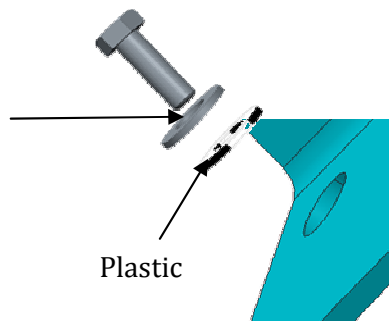
c. Fixing bracket



Wedge for x50



Inox



Plastic

-Repeat the operation on the other side

-Fix racket bracket on the hopper with:

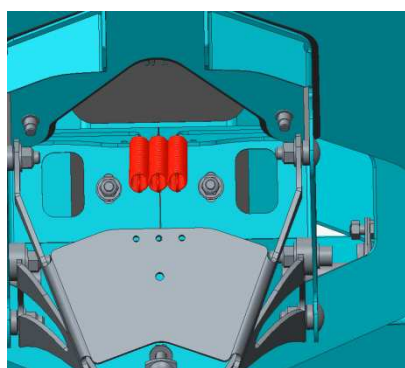
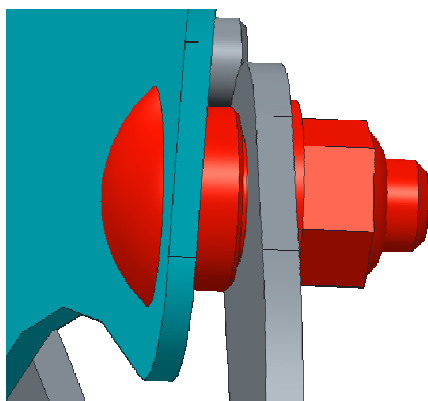
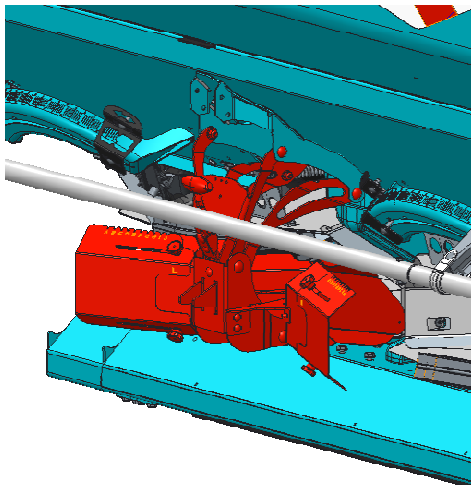
- 2 bolts H8x45
- 4 washers $\phi 8$
- 4 plastics washers $\phi 8$
- 2 plastics spacers for X40
- 1 plastic wedge for X50
- 2 nuts H8

- 2 bolts- H8x25
- 4 washers $\phi 8$
- 4 plastics washers $\phi 8$

Important:

The plastics washers must be placed between the inox washers and painted parts

d. Fixing the deflector

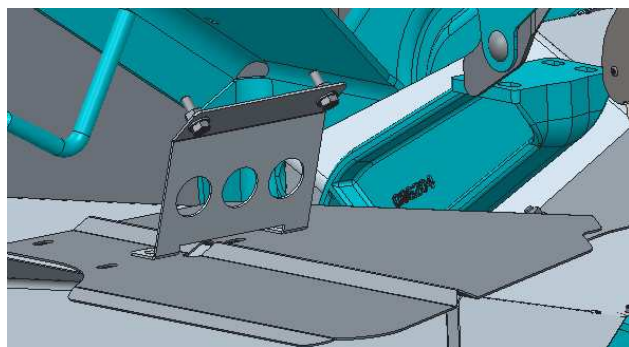
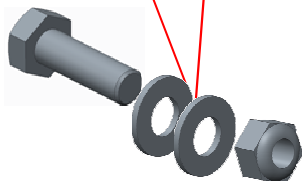
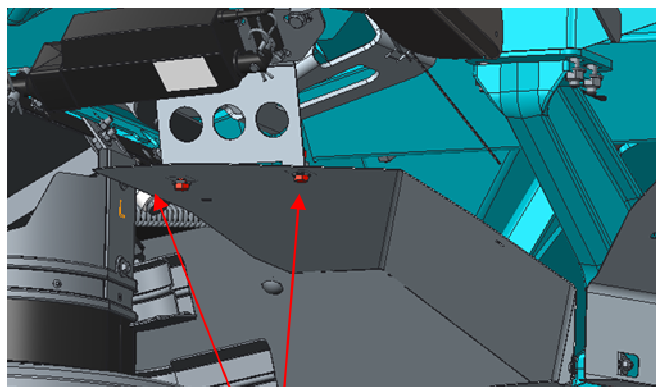
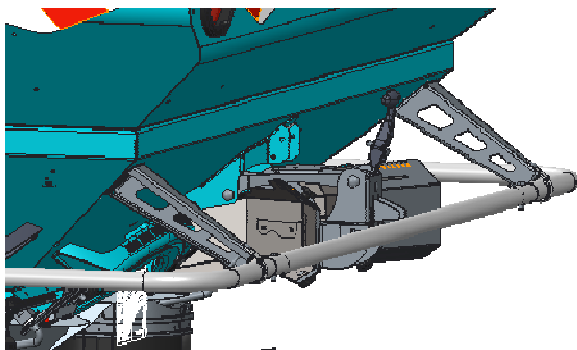


-Fix the deflector on the bracket with:

- 4 bolts TRCC M10 x30
- 4 inox Spacers
- 4 washers \varnothing 30
- 4 nuts H8

-Install the springs with hook

e. Fix the extending deflector



-Lift the system

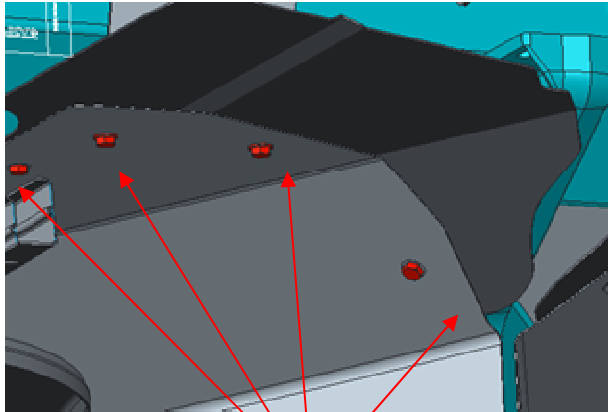
/!\ System use springs, be careful your fingers

-Remove:

- 2 Screws H8 x 25
- 4 Washers $\varnothing 8$
- 2 Bolts H8

-Install the extending deflector

X4D319-Assembly instructions Border spreading plate



- Fix the extending with
 - 4 screws H8 x25
 - 8 washers ϕ 8
 - 4 Bolts M8

- Only now, block all the nuts
- Repeat the operations on the other side

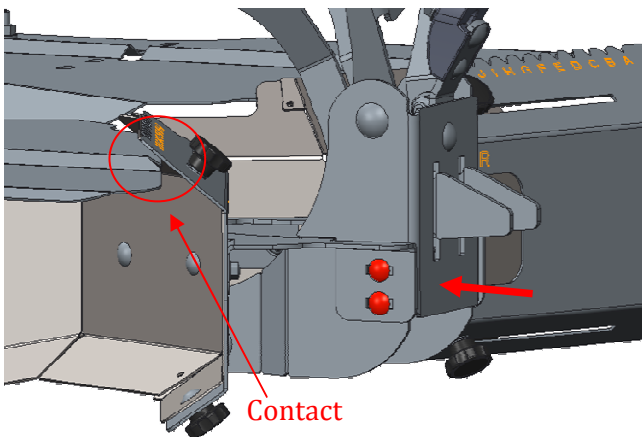
- Unblock:
 - 2 Screws TRCC M8

- Push down the deflector

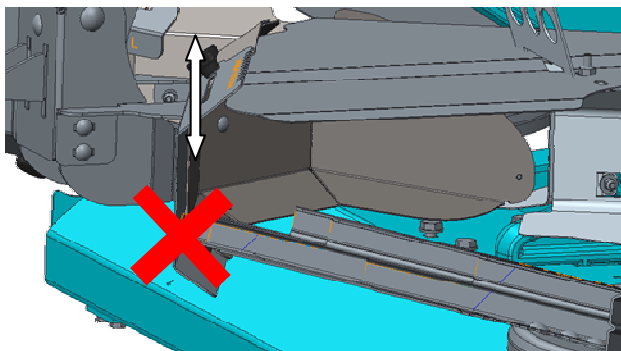
!/\ System use springs, be careful your fingers

- The deflector must come in contact to the extending

IV. Adjust the deflector

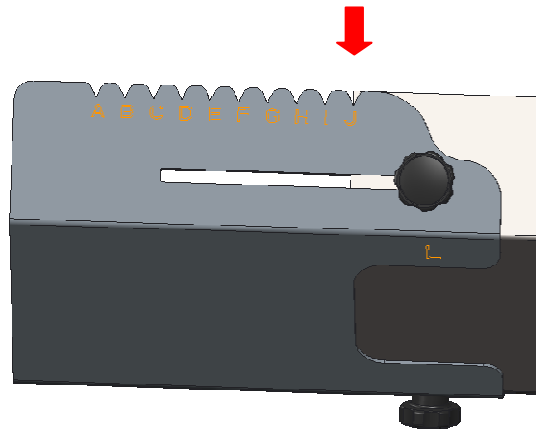


V. Verification

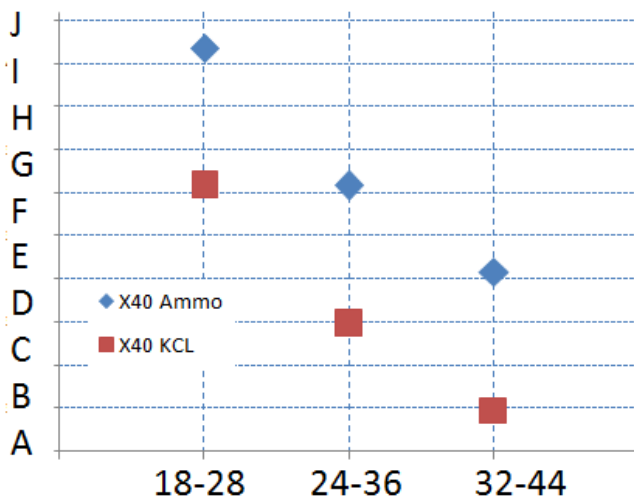


-Please Check that: By turning the disc, In any deflector positions, the blades are not touching it

- If there is problem, refers to: IV Adjust deflector



X40



X50

