

Trincia

TL33M



www.alpego.com

Tel +39 0444/64.61.00

Fax +39 0444/64.61.99

e-mail: info@alpego.com

ALPEGO s.p.a.

Sede Amministrativa:

Via Torri di Confine, 6 36053 GAMBELLARA (VICENZA) - ITALY

Sede Legale:

Via Giovanni e Giuseppe Cenzato, 9 36045 LONIGO (VICENZA) - ITALY

Capitale sociale €2.000.000 i.v.

Cod. Fisc. / Part. IVA IT02009840246

R.E.A. 199795/VI/1996

Reg. Imp.VI N°22374/VI/1996

N. Mecc. VI 011754

Copyright © 2009 Alpego s.p.a. ®

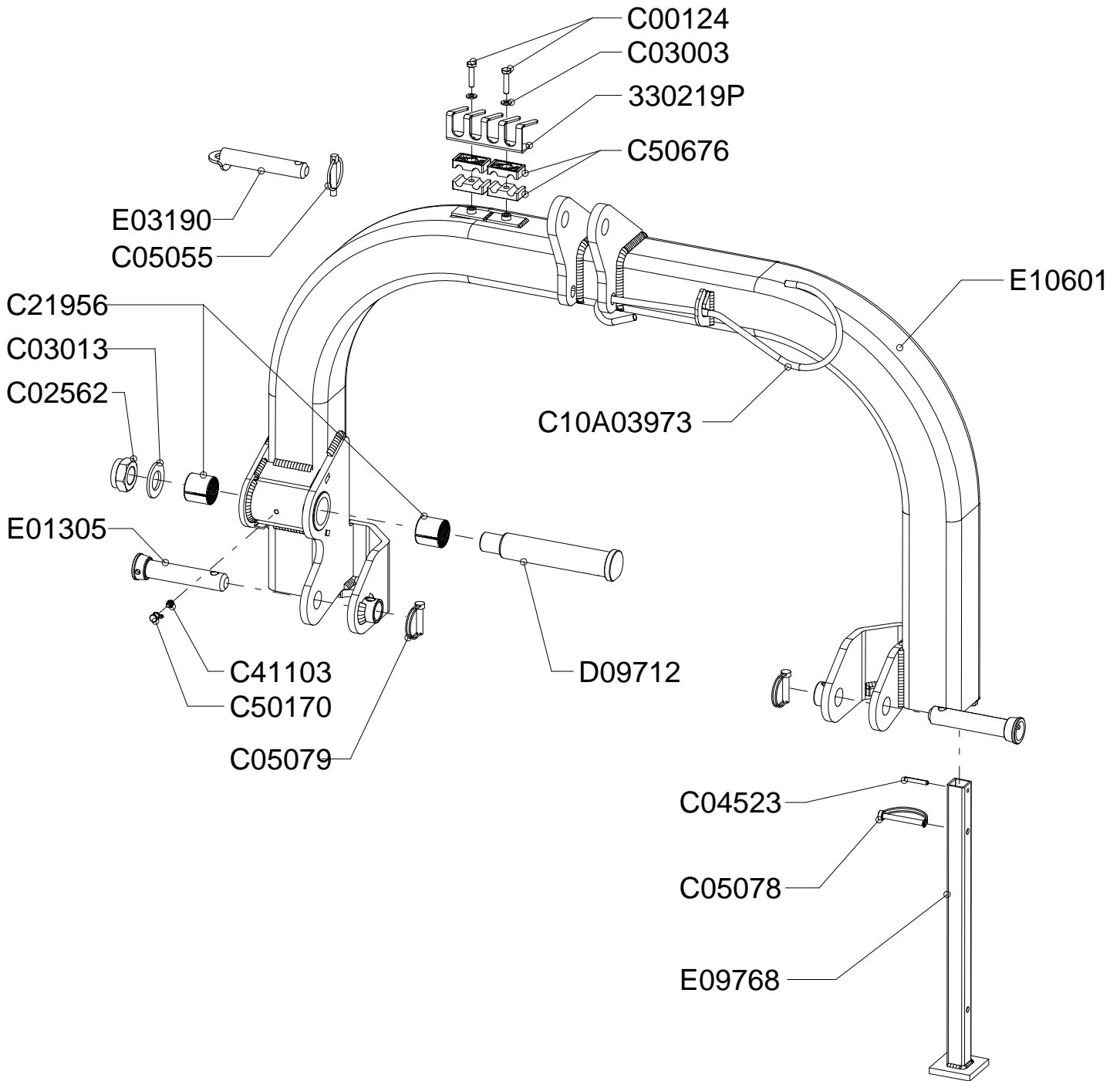
Tutti i diritti sono riservati. È vietata espressamente la ristampa o l'uso non autorizzato senza permesso scritto dalla Alpego s.p.a.

Tous droits réservés. Toute réimpression ou utilisation non autorisée sans la permission écrite de la Alpego s.p.a. est formellement interdite.

Alle Rechte vorbehalten. Nachdruck, Vervielfältigung und Verbreitung, auch auszugsweise, ist ohne schriftliche Genehmigung der Alpego s.p.a.

All rights reserved. Any reprinting or unauthorized use without the written permission of Alpego s.p.a. is expressly prohibited.

Todos los derechos reservados. Toda reproducción o uso no autorizado sin el consentimiento escrito de Alpego s.p.a. quedan expresamente prohibidos.



100635_02



Attacco a 3 punti

3 Point linkage

Attelage a trois points

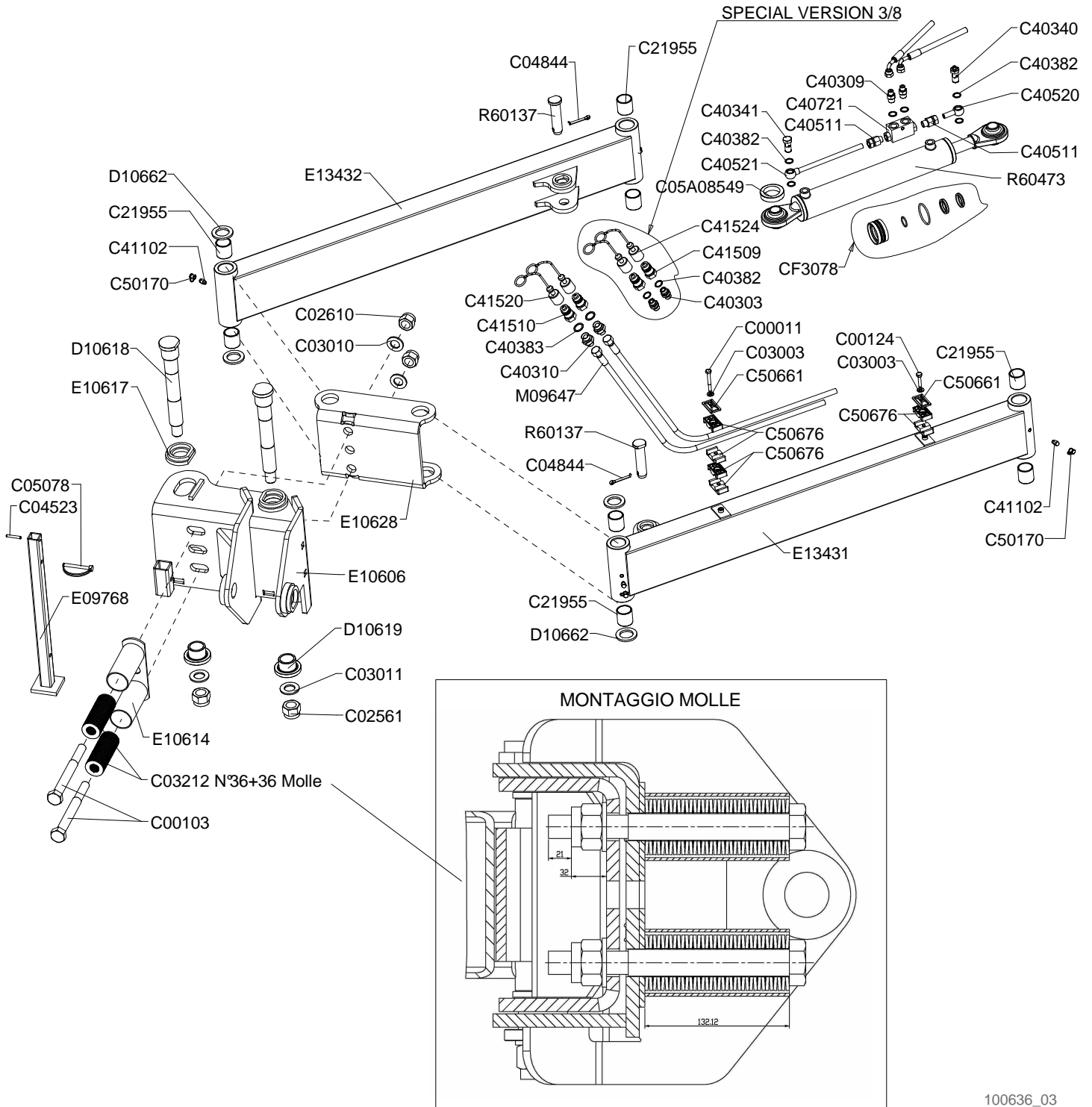
Schraubenbefestigung

Drawing Code:

100635_2

Accessories:

N°	Code	Old.	Descrizione / Description	GB	FR	D	E
#	C10A00823	330219P	PORTACONDOTTE TL/TR SP3MM	-	-	-	-
#	M80A00113	C00124	VITE TE 88 PG FT M8X35 ZINC UNI 5739	SCREW	VIS	SCHRAUBE	TORNILLO
#	M85A00070	C02562	DADO AUTOBLOC BASSO 8 PF M30X2 H=23 UNI 7474	NUT	BOULONS	NUT	DADO
#	M90A00005	C03003	RONDELLA PIANA D.8,4 DIN125-A ZINC.	WASHER	RONDELLE	UNTERLEGSCHIEBE	ARANDELLA
#	M90A00016	C03013	RONDELLA PIANA D.31 DIN 125-A ZINC.	WASHER	RONDELLE	UNTERLEGSCHIEBE	ARANDELLA
#	MB0A00015	C04523	SPINA ELASTICA D.6X40	SOCKET	GOUPILLE	STECKER	PASADOR
#	MB0A00096	C05055	SPINA A SCATTO D.10 CON TIRANTE IN GOMMA	SOCKET	GOUPILLE	STECKER	PASADOR
#	MB0A00099	C05078	SPINOTTO PER MOTOZAPPA D.8X80 UTILE	PIN	GOUPILLE	STIFT	PASADOR
#	MB0A00100	C05079	SPINOTTO PER MOTOZAPPA D.10X38 UTILE	PIN	GOUPILLE	STIFT	PASADOR
#	C10A03973		GANCIO SOSTEGNO CARDANO 10X426X130	HOOK	ATTACHE	HAKEN	ENGANCHE
#	M25A00004	C21956	BOCCOLA ALVEOLATA 40-40 KX 22	BUSH	DOUILLE	BUCHSE	BOCOLA
#	MJ5A00003	C41103	INGRASSATORE M8X1.25 DRITTO ESAGONO 11.	GREASE NIPPLE	GRAISSOR	FETTBUECHSE	ENGRASADOR
#	G00A00001	C50170	PROTEZIONE INGRASSATORE D.6MM ROSSO	PROTECTION	PROTECTION	SCHUTZ	PROTECCIÓN
#	G10A00035	C50676	"COLLARE POLI. CF2 DOPPIO D.1/4" (COPPIA)"	METAL RING	COLLARE	METALLRING	COLLAR
#	M15A00118	D09712	PERNO D.40X182 UT. ESTR. M30X2	PIN	PIVOT	STIFT	PIN
#	M15A00169	E01305	PERNO D.28X106 UT.FORO D.12 SALD ZINC***	PIN	PIVOT	STIFT	PIN
#	M15A00172	E03190	PERNO ROND.25X109 UT.FORO D.12 ZINC***	PIN	PIVOT	STIFT	PIN
#	C20A01673	E09768	GAMBA D'APPOGGIO TL H=410MM ZINC	LEG	BEQUILLE	BEIN	PATA
#	C20A01764	E10601	ARCO COMPLETO TL31-33	ARCH	ARC	BOGEN	ARCO





Spostamento laterale
 Sideway swivel
 Displacement lateral
 Das seitliche ausweiche

Drawing Code: **100636_3**

Accessories:

N°	Code	Old.	Descrizione / Description	GB	FR	D	E
#	M80A00008	C00011	VITE TE 88 PG FP M8X60 ZINC UNI 5737	SCREW	VIS	SCHRAUBE	TORNILLO
#	M80A00090	C00103	VITE TE 88 PG FP M24X220 ZINC UNI 5737	SCREW	VIS	SCHRAUBE	TORNILLO
#	M80A00113	C00124	VITE TE 88 PG FT M8X35 ZINC UNI 5739	SCREW	VIS	SCHRAUBE	TORNILLO
#	M85A00069	C02561	DADO AUTOBLOC BASSO 8 PF M27X2 H=22.5 UNI 7474	NUT	BOULONS	NUT	DADO
#	M85A00083	C02610	DADO AUTOBLOC ALTO 10 M24 H=28 UNI 7473	NUT	BOULONS	NUT	DADO
#	M90A00005	C03003	RONDELLA PIANA D.8,4 DIN125-A ZINC.	WASHER	RONDELLE	UNTERLEGSCHLEIBE	ARANDELLA
#	M90A00013	C03010	RONDELLA PIANA D.25 DIN125-A ZINC.	WASHER	RONDELLE	UNTERLEGSCHLEIBE	ARANDELLA
#	M90A00014	C03011	RONDELLA PIANA D.28 DIN125-A ZINC.	WASHER	RONDELLE	UNTERLEGSCHLEIBE	ARANDELLA
#	M90A00055	C03212	DISCO ELAST. D.25.4X50X3 DIN 2093	DISC	DISQUE	SCHLEIBE	DISCO
#	MB0A00015	C04523	SPINA ELASTICA D.6X40	SOCKET	GOUPILLE	STECKER	PASADOR
#	MB5A00022	C04844	COPPIGLIA D.6,3X60	COTTER PIN	GOUPILLE	SPLINT	COPPIGLIA
#	MB0A00099	C05078	SPINOTTO PER MOTOZAPPA D.8X60 UTILE	PIN	GOUPILLE	STIFT	PASADOR
#	C05A08549		ANELLO SPESSORE D.45 D.60 SP.13	RING	AMORTISSEUR	RING	ANILLO
#	M25A00003	C21955	BOCCOLA ALVEOLATA 35-40 KX 22	BUSH	DOUILLE	BUCHSE	BOCOLA
#	H35A00003	C40303	NIPLES 3/8 3/8	NIPLES	NIPLES	NIPLES	NIPLES
#	H35A00009	C40309	NIPLES RIDUZ.1/4 3/8	NIPLES	NIPLES	NIPLES	NIPLES
#	H35A00010	C40310	NIPLES RIDUZ.1/2 3/8	NIPLES	NIPLES	NIPLES	NIPLES
#	H40A00001	C40340	VITE FORATA 3/8X31 CON STROZZATORE	SCREW	VIS	SCHRAUBE	TORNILLO
#	H40A00002	C40341	VITE FORATA 3/8X31	SCREW	VIS	SCHRAUBE	TORNILLO
#	H35A00042	C40382	RONDELLA RAME 3/8 D.17	WASHER	RONDELLE	UNTERLEGSCHLEIBE	ARANDELLA
#	H35A00043	C40383	RONDELLA RAME 1/2 D.21	WASHER	RONDELLE	UNTERLEGSCHLEIBE	ARANDELLA
#	H35A00096	C40511	NIPLES 3/8 CON OGIVA 12 TENUTA DIN FORM A	NIPLES	NIPLES	NIPLES	NIPLES
#	H35A00098	C40520	OCCHIO 3/8 CON TUBETTO D.12X40 ZINC.	EYE	ŒIL	AUGE	OJOS
#	H35A00099	C40521	OCCHIO 3/8 CON TUBETTO D.12X200 ZINC.	EYE	ŒIL	AUGE	OJOS
#	H70A00013	C40721	VALVOLA BLOCCO 3/8 VBPDE L=126 CORTA	VALVE	SOUPAPE	VENTIL	VALVULA
#	MJ5A00002	C41102	INGRASSATORE M8X1.25 90°ESAGONO 11.	GREASE NIPPLE	GRAISSOR	FETTBUCHSE	ENGRASADOR
#	H50A00004	C41509	INNESTO RAPIDO MASCHIO ATT. ANV3/8GAS	COUPLING	ACCOUPEMENT	KUPPLUNG	COMPROMISO
#	H50A00005	C41510	INNESTO RAPIDO MASCHIO ATT.1/2 F NV	COUPLING	ACCOUPEMENT	KUPPLUNG	COMPROMISO
#	G10A00002	C41520	TAPPO PROT.INNESTO RAPIDO 1/2 MASCHIO BLU	PLUG	BOUCHON	STOEPSSEL	ENCHUFE
#	G10A00006	C41524	TAPPO PROT.INNESTO RAPIDO 3/8 MASCHIO	PLUG	BOUCHON	STOEPSSEL	ENCHUFE
#	G00A00001	C50170	PROTEZIONE INGRASSATORE D.6MM ROSSO	PROTECTION	PROTECTION	SCHUTZ	PROTECCIÓN
#	C15A00017	C50661	COPERCHIO FERMATUBO POLIPROP. 2 TUBI	LID	COUVERCLE	DECKEL	TAPA
#	G10A00035	C50676	"COLLARE POLI. CF2 DOPPIO D.1/4"" (COPPIA)"	METAL RING	COLLARE	METALLRING	COLLAR
#	SCOA00083	CF3078	SERIE GUARNIZIONI CIL R60473- R60474 D.60 D.30 (F.000484)	SERIES	SÉRIE	SERIE	SERIE
#	M15A00124	D10618	PERNO SPOST LAT D.45 D.34.5 L=300 FILET M27	PIN	PIVOT	STIFT	PIN
#	C15A00596	D10619	BUSSOLA SPOST LAT D.70 D.45 D.35.5 L=37MM TL31-33	BUSHING	ENTRETOISE	BUCHSE	BRUJULA
#	C05A06611	D10662	SPESSORE SPOST.LATERALE TL31-33 SP.5MM ZINC	THICKNESS	CALES	DICKE	ESPESOR
#	C20A01673	E09768	GAMBA D'APPOGGIO TL H=410MM ZINC	LEG	BEQUILLE	BEIN	PATA
#	C20A01766	E10606	ATTACCO SNODO ANTERIORE TL31-33	CONNECTION	ATTELAGE	ANSCHLUSS	ATAQUE
#	C20A01768	E10614	PROTEZIONE MOLLE A TAZZA COMPL. TL31-33	PROTECTION	PROTECTION	SCHUTZ	PROTECCIÓN
#	C20A01769	E10617	ANELLO ORIENT. COLONNA SPOST.LATERALE. ZINC.	RING	AMORTISSEUR	RING	ANILLO
#	C20A01770	E10628	ATTACCO INTERNO ANTERIORE TL31-33	CONNECTION	ATTELAGE	ANSCHLUSS	ATAQUE
#	C20A02096	E13431	BRACCIO PARALLELO (L=1180) SIN TL31-33	ARM	BRAS	ARM	BRAZO
#	C20A02098	E13432	BRACCIO PARALLELO (L=1180) DES.TL31-33	ARM	BRAS	ARM	BRAZO
#	H75A00082	M09647	"TUBO IDR F90*1/4""-R1AT 1/4""X2850-FD3/8""	TUBE	TUBE	ROHR	TUBO
#	M15A00190	R60137	PERNO MARTINETT STELO CIL SPOST LAT TL30	PIN	PIVOT	STIFT	PIN
#	H80A00059	R60473	CILINDRO D.60 C320 S30 CON ROTULE D26	CYLINDER	CYLINDRE	ZYLINDER	CILÍNDRICA

Spostamento laterale maggiorato

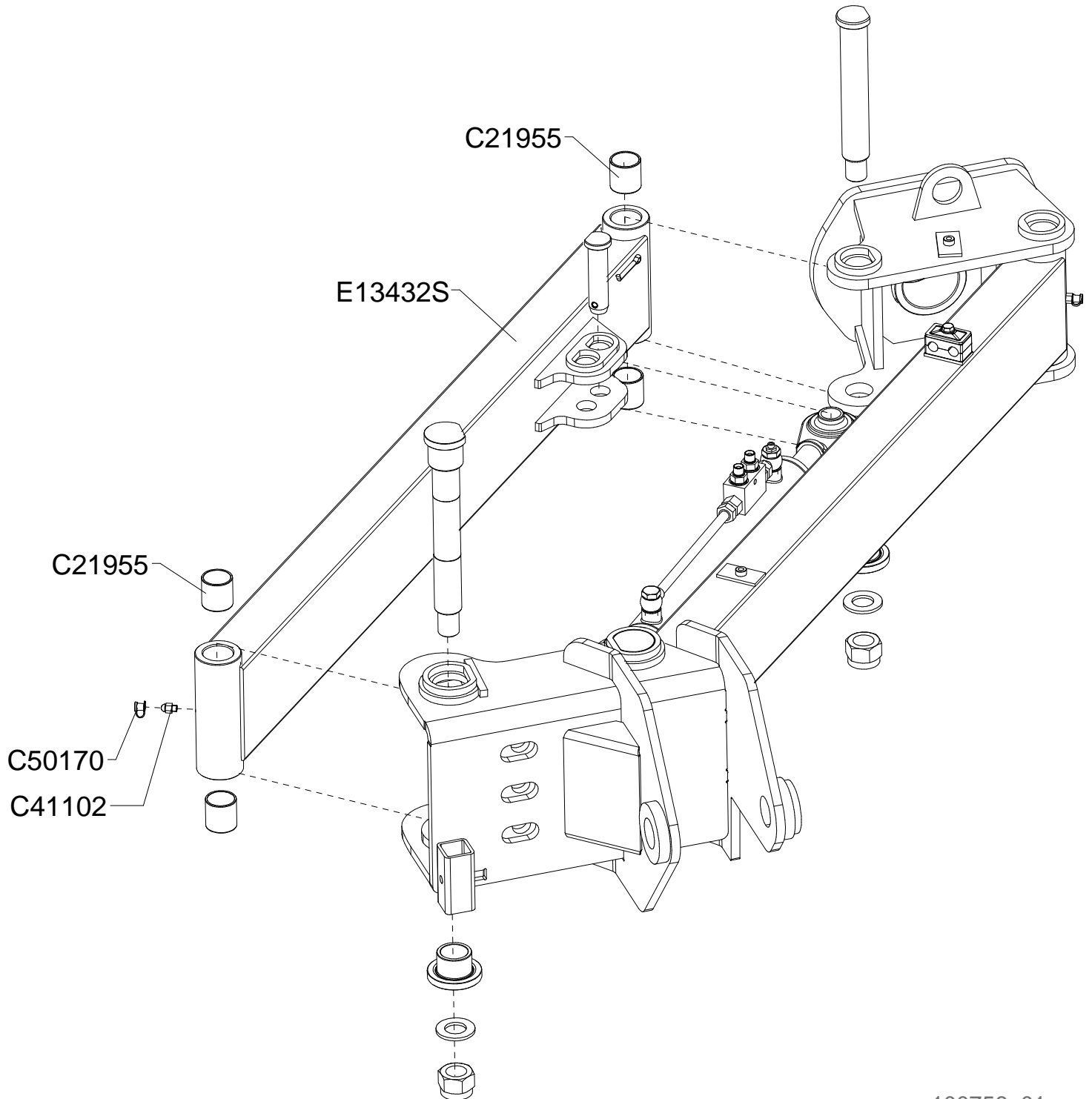
Sideway swivel increased

Deplacement lateral majore

Das seitliche ausweiche erhohht

Drawing Code: **100756_1**

Accessories:



100756_01



Spostamento laterale maggiorato

Sideway swivel increased

Displacement lateral majore

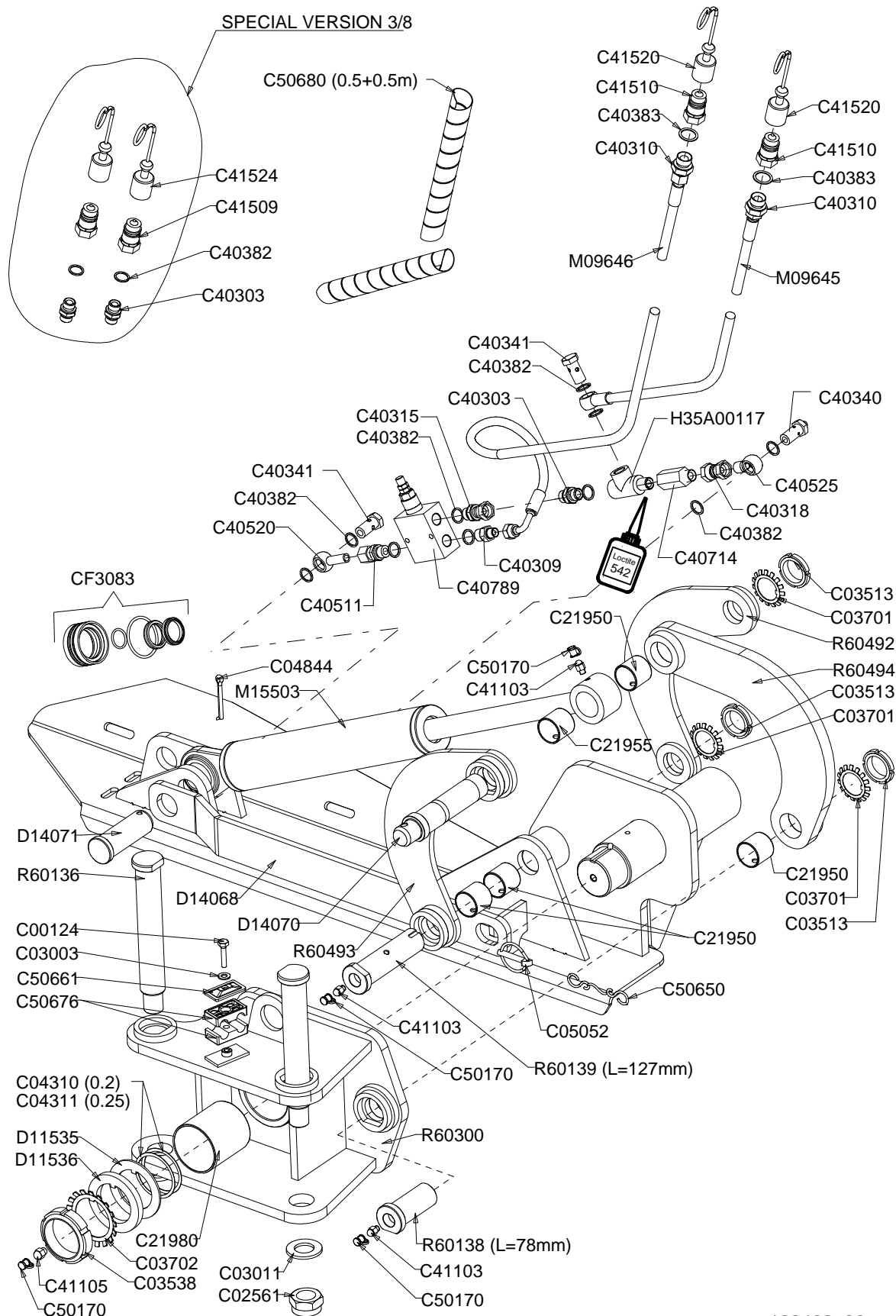
Das seitliche ausweiche erhohht

Drawing Code: **100756_1**

Accessories:

N°	Code	Old.	Descrizione / Description
#	M25A00003	C21955	BOCCOLA ALVEOLATA 35-40 KX 22
#	MJ5A00002	C41102	INGRASSATORE M8X1.25 90°ESAGONO 11.
#	G00A00001	C50170	PROTEZIONE INGRASSATORE D.6MM ROSSO
#	C20A02099	E13432S	BRACCIO PARALLELO (L=1180) DES.TL31-33 MAGGIORATO

GB	FR	D	E
BUSH	DOUILLE	BUCHSE	BOCOLA
GREASE NIPPLE	GRAISSOR	FETTBUECHSE	ENGRASADOR
PROTECTION	PROTECTION	SCHUTZ	PROTECCIÓN
ARM	BRAS	ARM	BRAZO





Ribaltamento telaio

Frame over turn

Basculage lateral

Rahmen klappen

Drawing Code: **100462_6**

Accessories:

N°	Code	Old.	Descrizione / Description	GB	FR	D	E
#	M80A00113	C00124	VITE TE 88 PG FT M8X35 ZINC UNI 5739	SCREW	VIS	SCHRAUBE	TORNILLO
#	M85A00069	C02561	DADO AUTOBLOC BASSO 8 PF M27X2 H=22.5 UNI 7474	NUT	BOULONS	NUT	DADO
#	M90A00005	C03003	RONDELLA PIANA D.8,4 DIN125-A ZINC.	WASHER	RONDELLE	UNTERLEGSCHIEBE	ARANDELLA
#	M90A00014	C03011	RONDELLA PIANA D.28 DIN125-A ZINC.	WASHER	RONDELLE	UNTERLEGSCHIEBE	ARANDELLA
#	M95A00004	C03513	GHIERA AUTOBLOC.BASSA GUK M35X1,5	METAL RING	RONDELLE	METALL-RING	RUEDA
#	M95A00016	C03538	GHIERA AUTOBLOC.ALTA GUP M60X2	METAL RING	RONDELLE	METALL-RING	RUEDA
#	M95A00020	C03701	ROSETTA MB 7 PER KM 35 ZINC	WASHER	RONDELLE	UNTERLEGSCHIEBE	ARANDELLA
#	M95A00021	C03702	ROSETTA MB 12 PER KM 60 ZINC	WASHER	RONDELLE	UNTERLEGSCHIEBE	ARANDELLA
#	MA5A00100	C04310	SPESSORE REG. 60 X 71 X 0.2	THICKNESS	CALES	DICKE	ESPEJOR
#	MA5A00101	C04311	SPESSORE REG. 60.5 X 70.5 X 0.25	THICKNESS	CALES	DICKE	ESPEJOR
#	MB5A00022	C04844	COPPIGLIA D.6,3X60	COTTER PIN	GOUPILLE	SPLINT	COPPIGLIA
#	MB0A00093	C05052	SPINA A SCATTO D.8	SOCKET	GOUPILLE	STECKER	PASADOR
#	M25A00002	C21950	BOCCOLA ALVEOLATA 35-35 KX 22	BUSH	DOUILLE	BUCHSE	BOCOLA
#	M25A00003	C21955	BOCCOLA ALVEOLATA 35-40 KX 22	BUSH	DOUILLE	BUCHSE	BOCOLA
#	M25A00005	C21980	BOCCOLA ALVEOLATA 70-80 KX 22	BUSH	DOUILLE	BUCHSE	BOCOLA
#	H35A00003	C40303	NIPLES 3/8 3/8	NIPLES	NIPLES	NIPLES	NIPLES
#	H35A00009	C40309	NIPLES RIDUZ. 1/4 3/8	NIPLES	NIPLES	NIPLES	NIPLES
#	H35A00010	C40310	NIPLES RIDUZ. 1/2 3/8	NIPLES	NIPLES	NIPLES	NIPLES
#	H35A00015	C40315	NIPLES DI CONGIUNZIONE MF 3/8 GIREVOLE	NIPLES	NIPLES	NIPLES	NIPLES
#	H35A00018	C40318	NIPLES DI CONGIUNZIONE FF 3/8 GIREVOLE	NIPLES	NIPLES	NIPLES	NIPLES
#	H40A00001	C40340	VITE FORATA 3/8X31 CON STROZZATORE	SCREW	VIS	SCHRAUBE	TORNILLO
#	H40A00002	C40341	VITE FORATA 3/8X31	SCREW	VIS	SCHRAUBE	TORNILLO
#	H35A00042	C40382	RONDELLA RAME 3/8 D.17	WASHER	RONDELLE	UNTERLEGSCHIEBE	ARANDELLA
#	H35A00043	C40383	RONDELLA RAME 1/2 D.21	WASHER	RONDELLE	UNTERLEGSCHIEBE	ARANDELLA
#	H35A00096	C40511	NIPLES 3/8 CON OGIVA 12 TENUTA DIN FORM A	NIPLES	NIPLES	NIPLES	NIPLES
#	H35A00098	C40520	OCCHIO 3/8 CON TUBETTO D.12X40 ZINC.	EYE	ŒIL	AUGE	OJOS
#	H35A00101	C40525	"OCCHIO FILETTATO 3/8""	EYE	ŒIL	AUGE	OJOS
#	H70A00011	C40714	VALVOLA PARACADUTE (TAR1.5) COLON. 3/8H=40MM TEN. DIN	VALVE	SOUPAPE	VENTIL	VALVULA
#	H70A00039	C40789	VALVOLA MAX PRESSIONE 3/8 (TAR. 30 BAR)	VALVE	SOUPAPE	VENTIL	VALVULA
#	MJ5A00003	C41103	INGRASSATORE M8X1.25 DRITTO ESAGONO 11.	GREASE NIPPLE	GRAISSOR	FETTBUCHSE	ENGRASADOR
#	MJ5A00005	C41105	INGRASSATORE M10X1 DRITTO	GREASE NIPPLE	GRAISSOR	FETTBUCHSE	ENGRASADOR
#	H50A00004	C41509	INNESTO RAPIDO MASCHIO ATT. ANV3/8GAS	COUPLING	ACCOUPEMENT	KUPPLUNG	COMPROMISO
#	H50A00005	C41510	INNESTO RAPIDO MASCHIO ATT. 1/2 F NV	COUPLING	ACCOUPEMENT	KUPPLUNG	COMPROMISO
#	G10A00002	C41520	TAPPO PROT.INNESTO RAPIDO 1/2 MASCHIO BLU	PLUG	BOUCHON	STOEPSSEL	ENCHUFE
#	G10A00006	C41524	TAPPO PROT.INNESTO RAPIDO 3/8 MASCHIO	PLUG	BOUCHON	STOEPSSEL	ENCHUFE
#	G00A00001	C50170	PROTEZIONE INGRASSATORE D.6MM ROSSO	PROTECTION	PROTECTION	SCHUTZ	PROTECCIÓN
#	M79A00002	C50650	GOMMINO CON ANELLI L.240 MM.	RUBBER	CAOUTCHOUC	BELAG	GOMAS
#	C15A00017	C50661	COPERCHIO FERMATUBO POLIPROP. 2 TUBI	LID	COUVERCLE	DECKEL	TAPA
#	G10A00035	C50676	"COLLARE POLI. CF2 DOPPIO D.1/4"" (COPPIA)"	METAL RING	COLLARE	METALLRING	COLLAR
#	G10A00037	C50680	"SPIRALE PROTEZ. TUBI IDR. 20X16 1/4""	SPIRAL	SPIRAL	SPIRAL	ESPIRAL
#	SCOA00113	CF3083	SERIE GUARNIZIONI CIL. M15503 D.70 D.30	SERIES	SÉRIE	SERIE	SERIE
#	C05A06806	D11535	SPESSORE ANTIROTAZ D.89 D.61 SP3MM (C72 TEMPR)	THICKNESS	CALES	DICKE	ESPEJOR
#	C05A06807	D11536	SPESSORE ANTIROTAZ D.89 D.61 SP 10MM ZINC	THICKNESS	CALES	DICKE	ESPEJOR
#	C10A03167	D14068	PIEGATO BLOCCO ROTAZ. TESTA TL31-33	BENT	PLIE	GEBOGEN	PLEGADO
#	M15A00155	D14070	PERNO SUPP. BIELLE RIBALT TELAIO TL31-33	PIN	PIVOT	STIFT	PIN
#	M15A00156	D14071	PERNO D.35X95 UT.FORO D.6 ZINC-TL31-33	PIN	PIVOT	STIFT	PIN
#	H35A00117		"ADATT. ""T"" M.3/8 CONICO - F.3/8 E F.3/8 LAT"	ADAPTER	ADAPTATEUR	ADAPTER	ADAPTADOR
#	H75A00080	M09645	"TUBO IDR OH3/8""-R1AT 1/4""X3950-FD3/8"	TUBE	TUBE	ROHR	TUBO
#	H75A00081	M09646	"TUBO IDR F90"1/4""-R1AT 1/4""X4350-FD3/8""	TUBE	TUBE	ROHR	TUBO

Copyright © 2009 Alpego s.p.a. ®

Tutti i diritti sono riservati. È vietata espressamente la ristampa o l'uso non autorizzato senza permesso scritto dalla Alpego s.p.a.

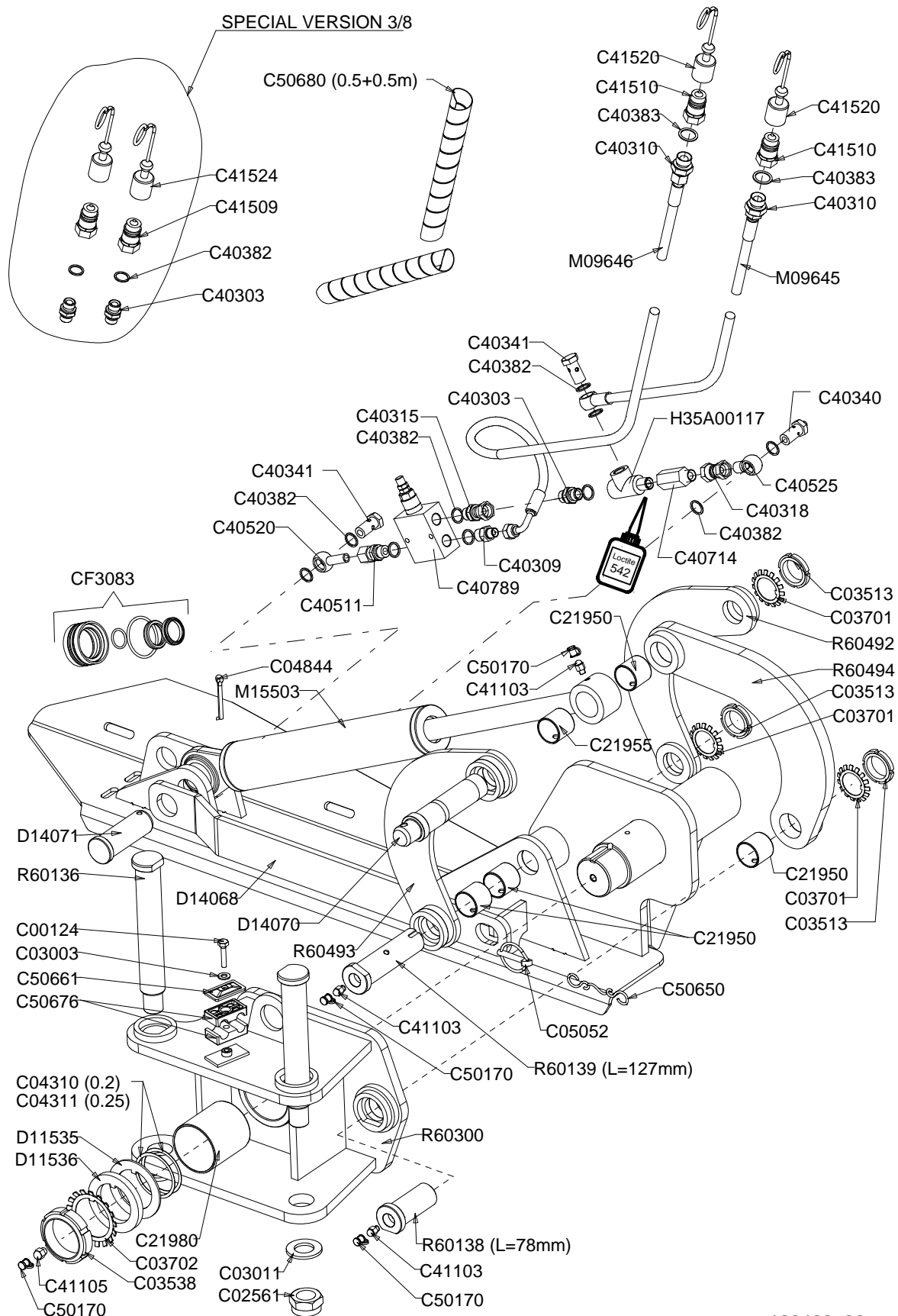
Tous droits réservés. Toute réimpression ou utilisation non autorisée sans la permission écrite de la Alpego s.p.a. est formellement interdite

Alle Rechte vorbehalten. Nachdruck, Vervielfältigung und Verbreitung, auch auszugsweise, ist ohne schriftliche Genehmigung der Alpego s.p.a.

Al rights reserved. Any reprinting or unauthorized use without the written permission of Alpego s.p.a. is expressly prohibited

Todos los derechos reservados. Toda reproducción o uso no autorizado sin el consentimiento escrito de Alpego s.p.a. quedan expresamente prohibidos

09/04/2014





Ribaltamento telaio

Frame over turn

Basculage lateral

Rahmen klappen

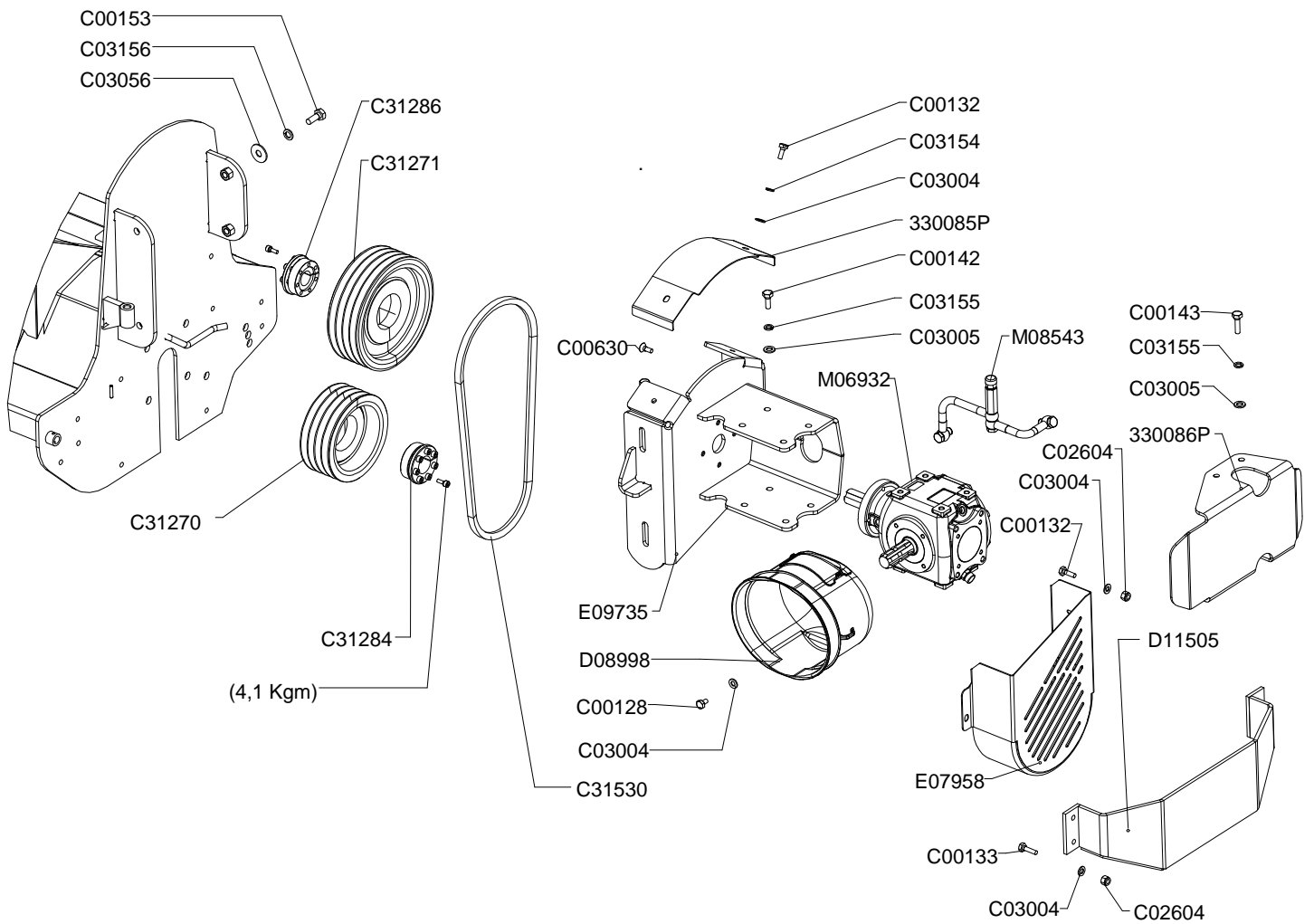
Drawing Code:

100462_6

Accessories:

N°	Code	Old.	Descrizione / Description
#	H80A00056	M15503	CILINDRO D.70 C260 S30 D.35
#	M15A00189	R60136	PERNO BRACCI PARAL SPOST LAT TL30
#	M15A00191	R60138	PERNO X BIELLA SIN RIBALT TELAIO TL-30
#	M15A00192	R60139	PERNO X BIELLE DES RIBALT TELAIO TL-30
#	C20A02516	R60300	ATTACCO POSTERIORE COMPL.RIB.TELAIO TL30
#	C20A02522	R60492	BIELLA DESTRA POSTERIORE RIBAL TEL TL
#	C20A02524	R60493	BIELLA DESTRA ANTERIORE RIBALT TELAIO TL
#	C20A02525	R60494	BIELLA SINISTRA RIBALT TELAIO TL

GB	FR	D	E
CYLINDER	CYLINDRE	ZYLINDER	CILÍNDRICA
PIN	PIVOT	STIFT	PIN
PIN	PIVOT	STIFT	PIN
PIN	PIVOT	STIFT	PIN
CONNECTION	ATTELAGE	ANSCHLUSS	ATAQUE
CONNECTING ROD	BIELLE	KURBELSTANGE	BIELA
CONNECTING ROD	BIELLE	KURBELSTANGE	BIELA
CONNECTING ROD	BIELLE	KURBELSTANGE	BIELA



100825_00



Trasmissione

Transmission

Transmission

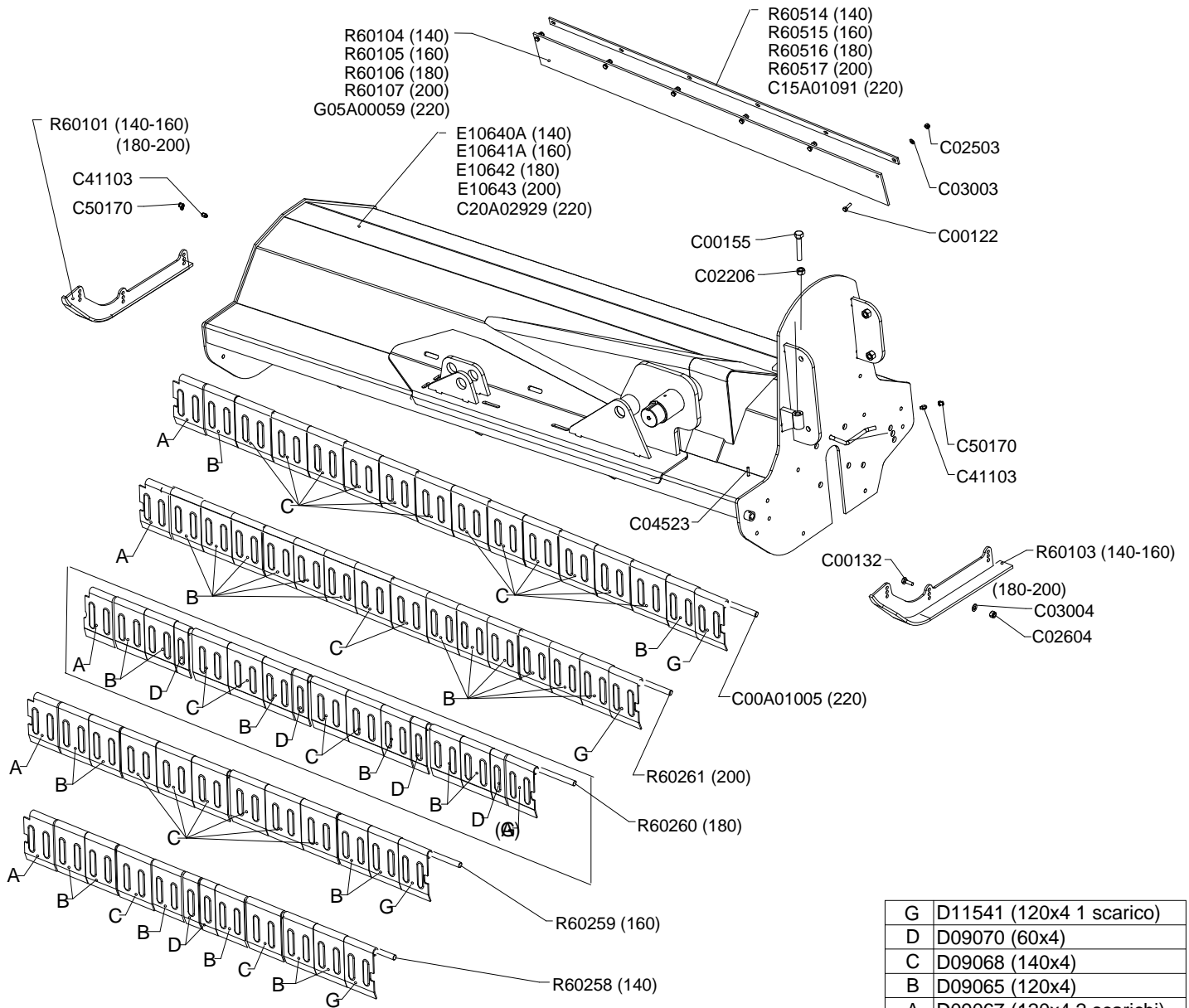
Getriebe

Drawing Code:

100825_0

Accessories:

N°	Code	Old.	Descrizione / Description	GB	FR	D	E
#	C10A00758	330085P	CHIUSURA SUP. TL32 04738/1 SP2MM	GATE	FERMETURE	VERSCHLUSS	CIERRE
#	C10A00759	330086P	PROTEZIONE LAT. TL32 04824 SP6MM	PROTECTION	PROTECTION	SCHUTZ	PROTECCIÓN
#	M80A00116	C00128	VITE TE 88 PG FT M10X16 ZINC UNI 5739	SCREW	VIS	SCHRAUBE	TORNILLO
#	M80A00118	C00131	VITE TE 88 PG FT M10X25 ZINC UNI 5739	SCREW	VIS	SCHRAUBE	TORNILLO
#	M80A00120	C00132	VITE TE 88 PG FT M10X30 ZINC UNI 5739	SCREW	VIS	SCHRAUBE	TORNILLO
#	M80A00121	C00133	VITE TE 88 PG FT M10X35 ZINC UNI 5739	SCREW	VIS	SCHRAUBE	TORNILLO
#	M80A00129	C00142	VITE TE 88 PG FT M12X30 ZINC UNI 5739	SCREW	VIS	SCHRAUBE	TORNILLO
#	M80A00130	C00143	VITE TE 88 PG FT M12X35 ZINC UNI 5739	SCREW	VIS	SCHRAUBE	TORNILLO
#	M80A00138	C00153	VITE TE 88 PG FT M14X40 ZINC UNI 5739	SCREW	VIS	SCHRAUBE	TORNILLO
#	M80A00283	C00630	VITE TSPEI 10.9 PG M10X25 ZINC UNI 5933	SCREW	VIS	SCHRAUBE	TORNILLO
#	M85A00077	C02604	DADO AUTOBLOC ALTO 8 M10 H=11.5 UNI 7473	NUT	BOULONS	NUT	DADO
#	M90A00007	C03004	RONDELLA PIANA D.10,5 DIN125-A ZINC.	WASHER	RONDELLE	UNTERLEGSCHIEBE	ARANDELLA
#	M90A00008	C03005	RONDELLA PIANA D.13 DIN125-A ZINC.	WASHER	RONDELLE	UNTERLEGSCHIEBE	ARANDELLA
#	M90A00031	C03056	RONDELLA PIANA D18XD48X3 UNI 6593 ZINC	WASHER	RONDELLE	UNTERLEGSCHIEBE	ARANDELLA
#	M90A00042	C03154	RONDELLA GROWER RINF.D.10 ASA B 27	WASHER	RONDELLE	UNTERLEGSCHIEBE	ARANDELLA
#	M90A00044	C03155	RONDELLA GROWER RINF. D.12 ASA B27	WASHER	RONDELLE	UNTERLEGSCHIEBE	ARANDELLA
#	M90A00046	C03156	RONDELLA GROWER RINF. D.14 ASA B27	WASHER	RONDELLE	UNTERLEGSCHIEBE	ARANDELLA
#	M60A00006	C31270	PULEGGIA PER CALETT. 190X4 SPB D.80-MOZZO LATER.	PULLEY	POULIE	RIEMENSCHIEBE	POLEAS
#	M60A00007	C31271	PULEGGIA PER CALETT. 250X4 SPB D.80-MOZZO LATER.	PULLEY	POULIE	RIEMENSCHIEBE	POLEAS
#	M75A00005	C31284	CALETTATORE VK-156 DI=40 DE=80	KEYED FLANGE	CALE	VERKEILER	CALENTADOR
#	M75A00007	C31286	CALETTATORE VK-156 DI=33 DE=80	KEYED FLANGE	CALE	VERKEILER	CALENTADOR
#	M55A00016	C31530	"CINGHIA ""XPB""1400 DENTEL (TL30-180/200)"	BELT	CEINTURE	RIEMEN	CORREA
#	G10A00051	D08998	PROT. OVALE 210X275XH150 FORATA	PROTECTION	PROTECTION	SCHUTZ	PROTECCIÓN
#	C10A02710	D11505	PROTEZIONE LAT. CARTER TL31 - 33 140/160/180/200	PROTECTION	PROTECTION	SCHUTZ	PROTECCIÓN
#	C20A01405	E07958	CARTER COMPL. TL32 (SEMICARTER)***	HOUSING	CARTER	GEHAUSE	CARTER
#	C20A01670	E09735	SLITTA SUPPORTO MOLTIPLICATORE TL33	SKID	PATTINS	SLED	TRINEO
#	M65A00100	M06932	MOLTIPLIC. R240 SINISTRO-1/3-RL-D33	MULTIPLIER	MULTIPLICATEUR	UEBERSETZUNGSGETRIEBE	MULTIPLICADOR
#	M79A00086	M08543	KIT SFIATO GRUPPO R240 (TL31/33) L= 365	KIT	KIT	KIT	KIT



G	D11541 (120x4 1 scarico)
D	D09070 (60x4)
C	D09068 (140x4)
B	D09065 (120x4)
A	D09067 (120x4 2 scarichi)

100827_00



Telaio
Frame
Chassis
Rahmen

Drawing Code: **100827_0**

Accessories:

N°	Code	Old.	Descrizione / Description	GB	FR	D	E
#	M80A00111	C00122	VITE TE 88 PG FT M8X25 ZINC UNI 5739	SCREW	VIS	SCHRAUBE	TORNILLO
#	M80A00120	C00132	VITE TE 88 PG FT M10X30 ZINC UNI 5739	SCREW	VIS	SCHRAUBE	TORNILLO
#	M80A00141	C00155	VITE TE 88 PG FT M14X50 ZINC UNI 5739	SCREW	VIS	SCHRAUBE	TORNILLO
#	C00A01005		ASTA SOST.BANDIERINE TL 220 D.16X2214 ZINC.	ROD	POLE	STIFT	POLOS
#	M85A00044	C02206	DADO BASSO 8 PG M14 UNI 5589 ZINC	NUT	BOULONS	NUT	DADO
#	M85A00056	C02503	DADO AUTOBLOC BASSO 8 PG M8 H=8 UNI 7474	NUT	BOULONS	NUT	DADO
#	M85A00077	C02604	DADO AUTOBLOC ALTO 8 M10 H=11.5 UNI 7473	NUT	BOULONS	NUT	DADO
#	M90A00005	C03003	RONDELLA PIANA D.8,4 DIN125-A ZINC.	WASHER	RONDELLE	UNTERLEGSscheIBE	ARANDELLA
#	M90A00007	C03004	RONDELLA PIANA D.10,5 DIN125-A ZINC.	WASHER	RONDELLE	UNTERLEGSscheIBE	ARANDELLA
#	MB0A00015	C04523	SPINA ELASTICA D.6X40	SOCKET	GOUPILLE	STECKER	PASADOR
#	C15A01091		PIATTO FISS. PROTEZ POST.TL33-220 25X4X2190	METAL STRAP	METAL DEPLOYE	BANDEISEN	PLATILLO
#	C20A02929		TELAIO TL33-220	FRAME	CHASSIS	RAHMEN	MARCO
#	MJ5A00003	C41103	INGRASSATORE M8X1.25 DRITTO ESAGONO 11.	GREASE NIPPLE	GRAISSOR	FETTBUeCHSE	ENGRASADOR
#	G00A00001	C50170	PROTEZIONE INGRASSATORE D.6MM ROSSO	PROTECTION	PROTECTION	SCHUTZ	PROTECCIóN
#	C10A02315	D09065	BANDIERINA DI PROT. 120X4X182 ZINCATA	PLATE	DRAPEAUX	BLECH	BANDERIN
#	C10A02317	D09067	BANDIERINA SCANTONATA. 120X4X182 ZINCATA	PLATE	DRAPEAUX	BLECH	BANDERIN
#	C10A02318	D09068	BANDIERINA DI PROT. 140X4X182 ZINCATA	PLATE	DRAPEAUX	BLECH	BANDERIN
#	C10A02320	D09070	BANDIERINA DI PROT. 60X4X182 ZINCATA	PLATE	DRAPEAUX	BLECH	BANDERIN
#	C10A02727	D11541	BANDIERINA SCANT SIN 120X4X182 TL31-33	PLATE	DRAPEAUX	BLECH	BANDERIN
#	C20A01778	E10640A	TELAIO TL33-140 ALPEGO	FRAME	CHASSIS	RAHMEN	MARCO
#	C20A01781	E10641A	TELAIO TL33-160 ALPEGO	FRAME	CHASSIS	RAHMEN	MARCO
#	C20A01783	E10642	TELAIO TL33-180	FRAME	CHASSIS	RAHMEN	MARCO
#	C20A01785	E10643	TELAIO TL33-200	FRAME	CHASSIS	RAHMEN	MARCO
#	G05A00059	R60107	PROTEZIONE POSTERIORE GOMMA TL30-200 130X6	PROTECTION	PROTECTION	SCHUTZ	PROTECCIóN
#	C20A02485	R60101	SLITTA DESTRA TL31-33-180/200	SKID	PATTINS	SLED	TRINEO
#	C20A02487	R60103	SLITTA SINISTRA TL31-33-180/200	SKID	PATTINS	SLED	TRINEO
#	G05A00056	R60104	PROTEZIONE POSTERIORE GOMMA TL30-140 130X6	PROTECTION	PROTECTION	SCHUTZ	PROTECCIóN
#	G05A00057	R60105	PROTEZIONE POSTERIORE GOMMA TL30-160 130X6	PROTECTION	PROTECTION	SCHUTZ	PROTECCIóN
#	G05A00058	R60106	PROTEZIONE POSTERIORE GOMMA TL30-180 130X6	PROTECTION	PROTECTION	SCHUTZ	PROTECCIóN
#	G05A00059	R60107	PROTEZIONE POSTERIORE GOMMA TL30-200 130X6	PROTECTION	PROTECTION	SCHUTZ	PROTECCIóN
#	C15A00880	R60258	ASTA SOSTEGNO BANDIERINE TL 140	ROD	POLE	STIFT	POLOS
#	C15A00881	R60259	ASTA SOSTEGNO BANDIERINE TL 160	ROD	POLE	STIFT	POLOS
#	C15A00882	R60260	ASTA SOSTEGNO BANDIERINE TL 180	ROD	POLE	STIFT	POLOS
#	C15A00883	R60261	ASTA SOSTEGNO BANDIERINE TL 200	ROD	POLE	STIFT	POLOS
#	C15A00916	R60514	PIATTO FISS. PROTEZ POST.TL30-140 25X4X1390	METAL STRAP	METAL DEPLOYE	BANDEISEN	PLATILLO
#	C15A00917	R60515	PIATTO FISS. PROTEZ POST.TL30-160 25X4X1590	METAL STRAP	METAL DEPLOYE	BANDEISEN	PLATILLO
#	C15A00918	R60516	PIATTO FISS. PROTEZ POST.TL30-180 25X4X1790	METAL STRAP	METAL DEPLOYE	BANDEISEN	PLATILLO
#	C15A00919	R60517	PIATTO FISS. PROTEZ POST.TL30-200 25X4X1990	METAL STRAP	METAL DEPLOYE	BANDEISEN	PLATILLO

Rotore con supporti

Rotor and holder

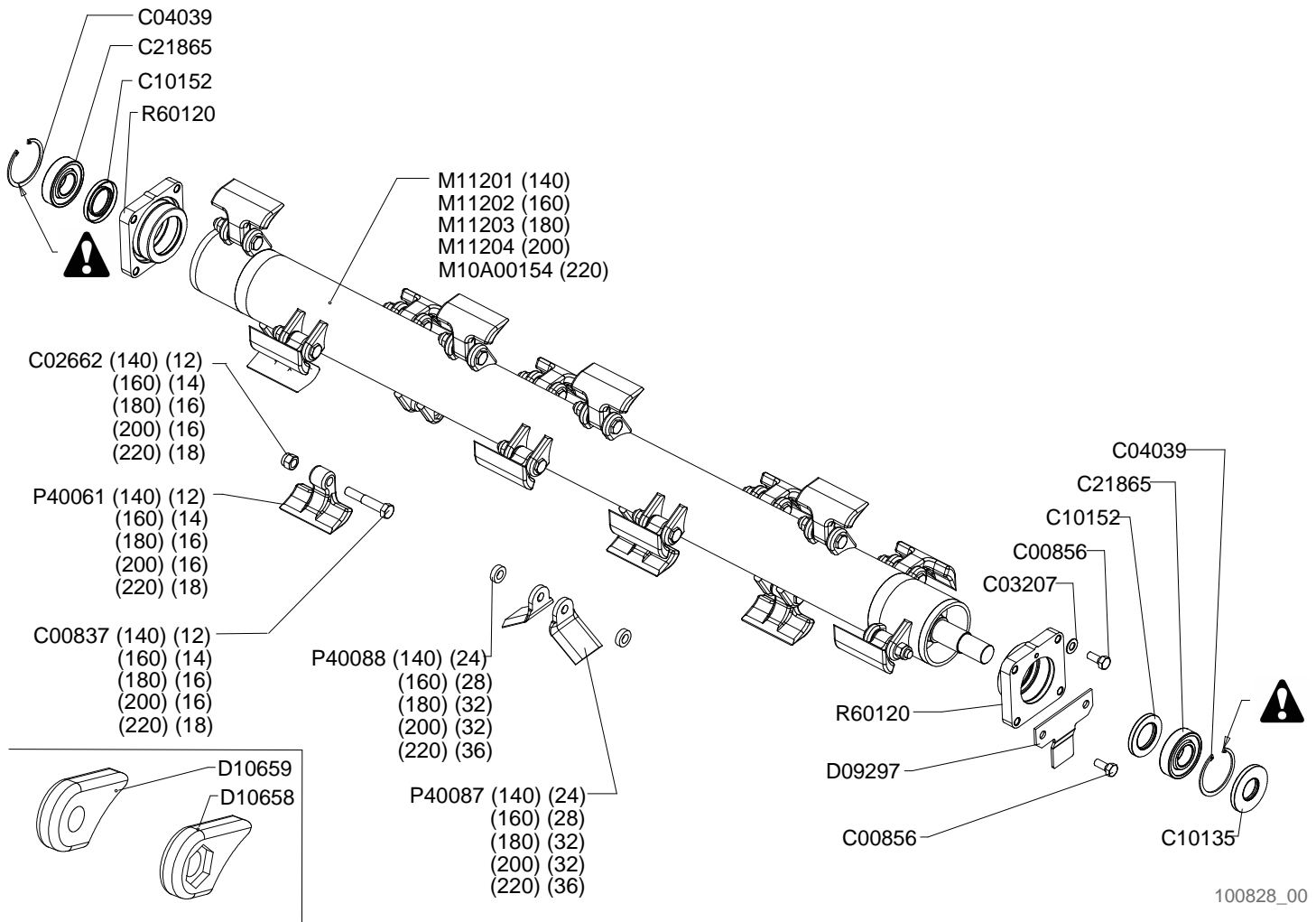
Rotor au support

Rotor - stutze

Drawing Code:

100828_0

Accessories:



100828_00



Rotore con supporti

Rotor and holder

Rotor au support

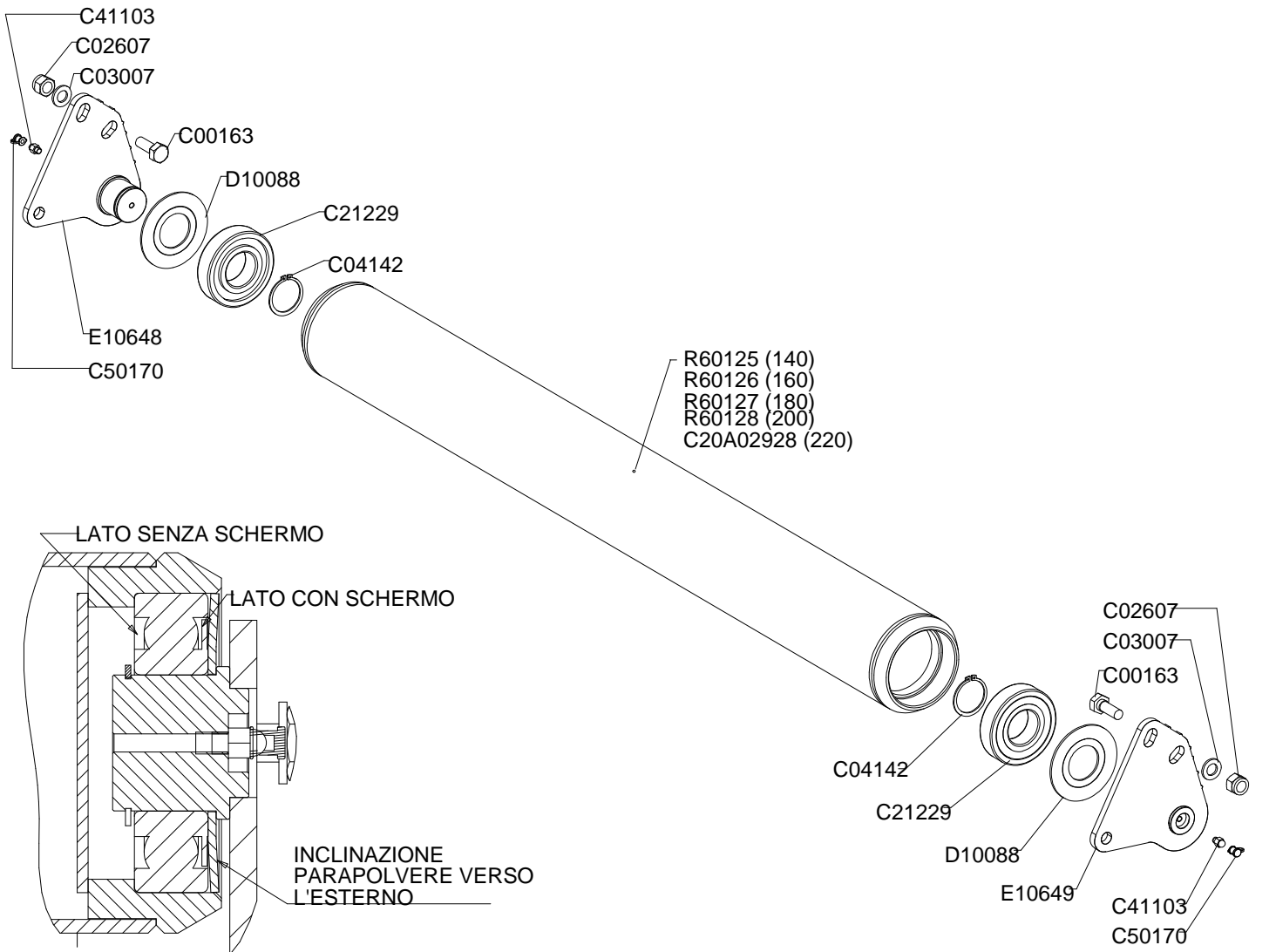
Rotor - stutze

Drawing Code:

100828_0

Accessories:

N°	Code	Old.	Descrizione / Description	GB	FR	D	E
#	M80A00330	C00837	VITE TE 12.9 PF M18X1.5X100 FIL30 UNI 5738	SCREW	VIS	SCHRAUBE	TORNILLO
#	M80A00347	C00856	VITE TE 10.9 PG FT M16X35 UNI 5739 (GEOMET)	SCREW	VIS	SCHRAUBE	TORNILLO
#	M85A00094	C02662	DADO AUTOBLOC ALTO 8 M18X1.5 H=20 UNI 7473	NUT	BOULONS	NUT	DADO
#	M90A00053	C03207	DISCO ELAST. D.16,3X31.5X1.75 ZINC+DEIDR DIN 2093	DISC	DISQUE	SCHEIBE	DISCO
#	MA0A00014	C04039	SEEGER FORO D.100 UNI 7437	SEEGER	SEEGER	SEEGER	SEEGER
#	H00A00052	C10135	PARAOLIO BASL D.45X100X10	SEALING RING	JOINT SPI	OELABDICHTUNG	PARAOLIO
#	H00A00065	C10152	PARAOLIO BASL D.55X90X10	SEALING RING	JOINT SPI	OELABDICHTUNG	PARAOLIO
#	M20A00106	C21865	CUSCINETTO OR.SFE 1309 ETN9 45X100X25	BEARING	ROULEMENT	KUGELLAGER	COJINETE
#	C10A02363	D09297	PROTEZIONE SUPPORTO TL- TR25 sp5mm	PROTECTION	PROTECTION	SCHUTZ	PROTECCIÓN
#	B65A00037	D10658	ORECCHIETTA SP.18 FORO 18.5 ES. 28	WELDED PLATE	LAME	STREICHBLECH	OREJA
#	B65A00038	D10659	ORECCHIETTA SP.18 CON FORO D.18.5	WELDED PLATE	LAME	STREICHBLECH	OREJA
#	M10A00154		ROTORE TL-TR26-220 COMPL.MAZZE ALPEGO	ROTOR	ROTOR	ROTOR	ROTOR
#	M10A00020	M11201	ROTORE TL-TR26-140 COMPL.MAZZE ALPEGO	ROTOR	ROTOR	ROTOR	ROTOR
#	M10A00022	M11202	ROTORE TL-TR26-160 COMPL.MAZZE ALPEGO	ROTOR	ROTOR	ROTOR	ROTOR
#	M10A00024	M11203	ROTORE TL-TR26-180 COMPL.MAZZE ALPEGO	ROTOR	ROTOR	ROTOR	ROTOR
#	M10A00026	M11204	ROTORE TL-TR26-200 COMPL.MAZZE ALPEGO	ROTOR	ROTOR	ROTOR	ROTOR
#	MK0A00212	P40061	MAZZA TRINCIA FORO=18.5 LARG=140 R=95	HAMMER	MARTEAUX	HAMMERSCHLEGEL	MAZA/MARTILLO
#	MK0A00221	P40087	COLTELLO UNIVERS. TRISAR D18.5 L70 R=95	BLADE	COUTEAU	MESSER	CUCHILLO
#	C15A00801	P40088	DISTANZIALE FORO 19 H10.5 D35 (XCOLT.)	SPACER	ENTRETOISE	ABSTANDSTUECK	ESPACIADORES
#	M35A00065	R60120	SUPPORTO ROTORE DS/SN TR25/TL30-180/200*	SUPPORT	SUPPORT	STUTZE	APOYO



100637_01



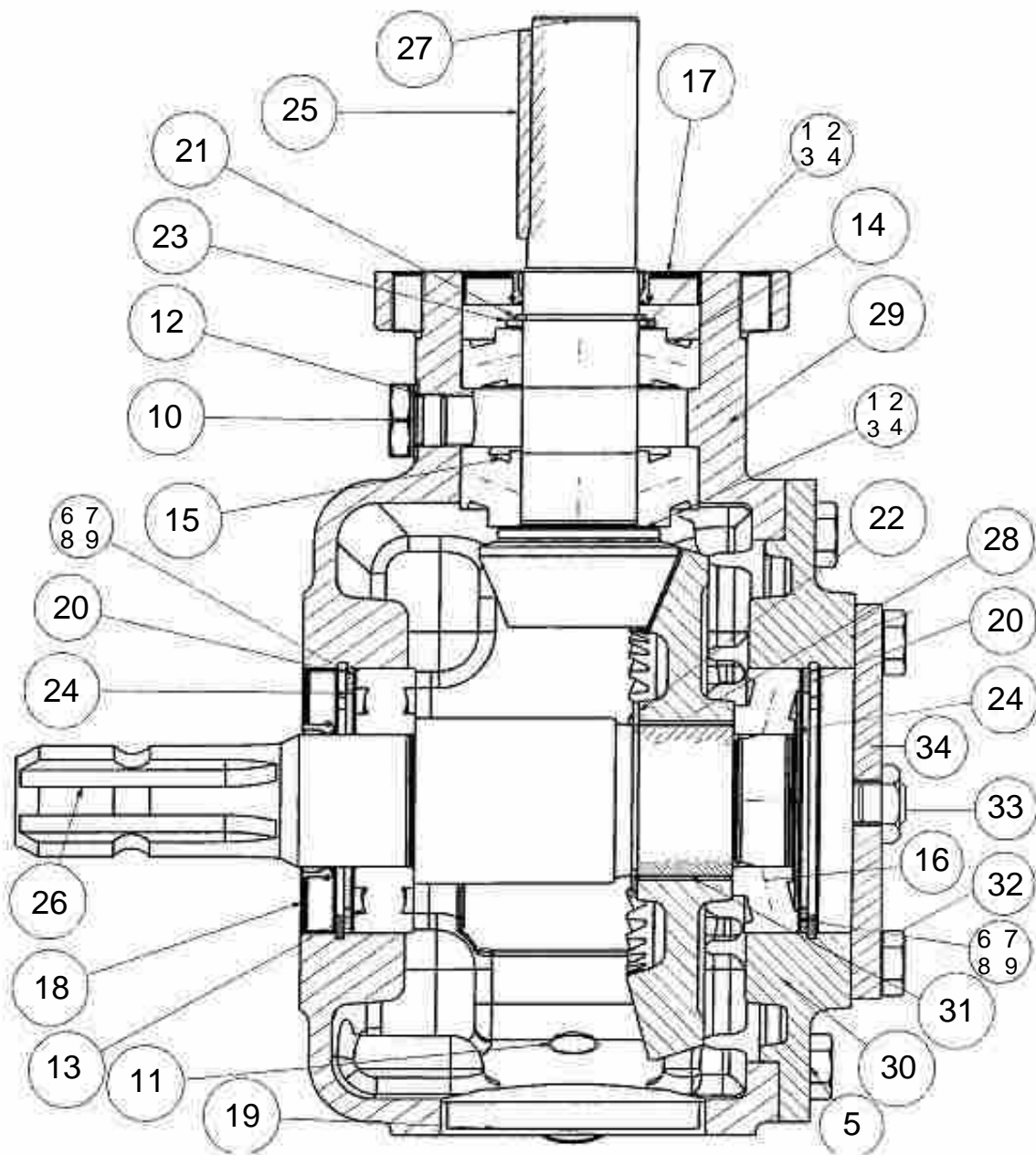
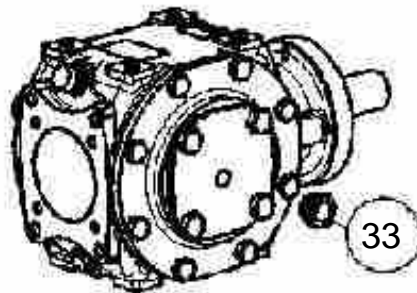
Rullo posteriore
 Rear roller
 Rouleau posterieur
 Hinter Walze

Drawing Code: **100637_1**

Accessories:

N°	Code	Old.	Descrizione / Description
#	M80A00149	C00163	VITE TE 88 PG FT M16X40 ZINC UNI 5739
#	M85A00080	C02607	DADO AUTOBLOC ALTO 8 M16 H=18 UNI 7473
#	M90A00010	C03007	RONDELLA PIANA D.17 DIN125-A ZINC.
#	MA0A00041	C04142	SEEGER ALBERO D.50 UNI 7435
#	C20A02928		RULLO POST.TR26/TL33/31-220***
#	M20A00049	C21229	CUSCINETTO 6310 Z C3 (CL- B) 50X110X27
#	MJ5A00003	C41103	INGRASSATORE M8X1.25 DRITTO ESAGONO 11.
#	G00A00001	C50170	PROTEZIONE INGRASSATORE D.6MM ROSSO
#	C10A02477	D10088	RONDELLA PARAPOLVERE D.109 D.51 SP3MM
#	C20A01788	E10648	SUPPORTO RULLO DES TL30A-32A 31-33
#	C20A01789	E10649	SUPPORTO RULLO SIN TL30A-32A-31-33
#	C20A02488	R60125	RULLO POST.TR25/TL30-140***
#	C20A02489	R60126	RULLO POST.TR25/TL30-160***
#	C20A02490	R60127	RULLO POST.TR25/TL30-180***
#	C20A02491	R60128	RULLO POST.TR25/TL30-200***

GB	FR	D	E
SCREW	VIS	SCHRAUBE	TORNILLO
NUT	BOULONS	NUT	DADO
WASHER	RONDELLE	UNTERLEGSCHIEBE	ARANDELLA
SEEGER	SEEGER	SEEGER	SEEGER
ROLLER	ROULEAU	WALZE	RODILLO
BEARING	ROULEMENT	KUGELLAGER	COJINETE
GREASE NIPPLE	GRAISSOR	FETTBUECHSE	ENGRASADOR
PROTECTION	PROTECTION	SCHUTZ	PROTECCIÓN
WASHER	RONDELLE	UNTERLEGSCHIEBE	ARANDELLA
SUPPORT	SUPPORT	STUTZE	APOYO
SUPPORT	SUPPORT	STUTZE	APOYO
ROLLER	ROULEAU	WALZE	RODILLO
ROLLER	ROULEAU	WALZE	RODILLO
ROLLER	ROULEAU	WALZE	RODILLO
ROLLER	ROULEAU	WALZE	RODILLO





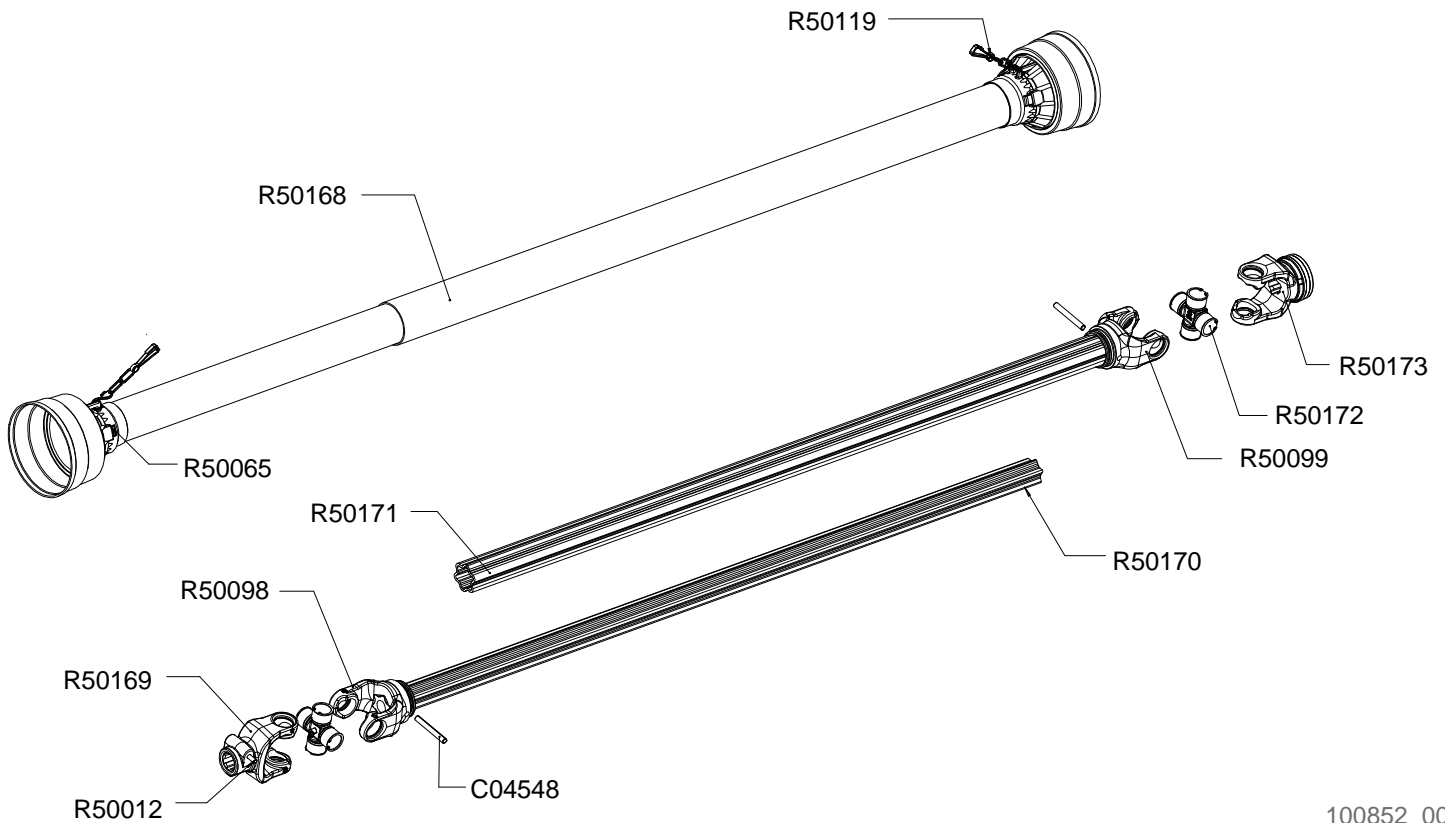
Moltiplicatore M06932

Overgear
Multiplicateur
Übersetzen

Drawing Code: **100511_1**

Accessories:

N°	Code	Old.	Descrizione / Description	GB	FR	D	E
1	MA5A00053	C04255	SPESSORE REG. 35X45X0,20	THICKNESS	CALES	DICKE	ESPESOR
2	MA5A00054	C04256	SPESSORE REG. 35X45X0,25	THICKNESS	CALES	DICKE	ESPESOR
3	MA5A00055	C04257	SPESSORE REG. 35X45X0,35	THICKNESS	CALES	DICKE	ESPESOR
4	MA5A00056	C04258	SPESSORE REG. 35X45X0,50	THICKNESS	CALES	DICKE	ESPESOR
5	M80A00118	C00131	VITE TE 88 PG FT M10X25 ZINC UNI 5739	SCREW	VIS	SCHRAUBE	TORNILLO
6	MA5A00025	C04225	SPESSORE REG. 65,3X79,7X0,2	THICKNESS	CALES	DICKE	ESPESOR
7	MA5A00026	C04226	SPESSORE REG. 65,3X79,7X0,25	THICKNESS	CALES	DICKE	ESPESOR
8	MA5A00027	C04227	SPESSORE REG. 65,3X79,7X0,3	THICKNESS	CALES	DICKE	ESPESOR
9	MA5A00028	C04228	SPESSORE REG. 65,3X79,7X0,5	THICKNESS	CALES	DICKE	ESPESOR
10	H45A00016	C41225	TAPPO M16X1,5 (32.A)	PLUG	BOUCHON	STOEPSSEL	ENCHUFE
11	H65A00002	C41230	TAPPO SFIATO M16X1,5 (30.A) LABIRINTO	PLUG	BOUCHON	STOEPSSEL	ENCHUFE
12	H35A00042	C40382	RONDELLA RAME 3/8 D.17	WASHER	RONDELLE	UNTERLEGSCHLEIBE	ARANDELLA
13	M20A00028	C21120	CUSCINETTO 6208 40x80x18	BEARING	ROULEMENT	KUGELLAGER	COJINETE
14	M20A00059	C21407	CUSCINETTO 30207 35X72X18,25 J2	BEARING	ROULEMENT	KUGELLAGER	COJINETE
15	M20A00070	C21507	CUSCINETTO 32207 35X72X24,25	BEARING	ROULEMENT	KUGELLAGER	COJINETE
16	M20A00060	C21408	CUSCINETTO 30208 40X80X19,75	BEARING	ROULEMENT	KUGELLAGER	COJINETE
17	H00A00044	C10118	PARAOLIO BASL D.35X72X10	SEALING RING	JOINT SPI	OELABDICHTUNG	PARAOLIO
18	H00A00101	C10123	PARAOLIO BASL D.40X80X10	SEALING RING	JOINT SPI	OELABDICHTUNG	PARAOLIO
19	H00A00087	C10321	CAPPELOTTO D.80X10	PLASTIC GUARD	BACHE	KUNSTSTOFF-DECKEL	SOMBRERETE
20	MA0A00010	C04035	SEEGER FORO D.80 UNI 7437	SEEGER	SEEGER	SEEGER	SEEGER
21	MA0A00036	C04138	SEEGER ALBERO D.35 UNI 7435	SEEGER	SEEGER	SEEGER	SEEGER
22	MA0A00043	C04143	SEEGER ALBERO d.48 UNI 7435	SEEGER	SEEGER	SEEGER	SEEGER
23	MA5A00057	C04259	SPESSORE REG. 35X45X2	THICKNESS	CALES	DICKE	ESPESOR
24	MA5A00073	C04274	RALLA REG. 65X79X2	FIFTH WHEEL	RONDELLE	DREHPLATTE	RAYA
25	MC0A00004	C04907	LINGUETTA 10X8X60 UNI 6604	TONGUE	CLAVETTE	ZUNGE	LENGUA
26	M45A00120	R90022	"ALBERO P.T.O 1"3/8 RUOTA LIBERA OPPOSTA TL32"	SHAFT	ARBRE	WELLE	EJE
27	M40A00139	R90016	PIGNONE CONICO Z=12 M=4,23 TL30-TL32	PINION	PIGNON	RITZEL	PIÑON
28	M40A00141	R90023	CORONA CONICA RUOTA LIB.OPP Z=37 M=4,23	CROWN	COURONNE	KRONE	CORONA
29	C15A01016	R90018	SCATOLA RIDUTTORE R240 TL30-TL32	BOX	BOITE	SCHACTEL	RECUADRO
30	M35A00082	R90019	FLANGIA P.T.O RIDUTTORE R240 TL30-TL32	FLANGE	FLANC	FLANSCH	FLANGE
31	M75A00143	R90020	KIT NOTTOLINO L=28 + MOLLA RUOTA LIBERA TL30-TL32	KIT	KIT	KIT	KIT
32	M80A00117	C00130	VITE TE 88 PG FT M10X20 ZINC UNI 5739	SCREW	VIS	SCHRAUBE	TORNILLO
33	H60A00004	C41315	SPIA LIVELLO OLIO 16X1,5 (38A)	LIGHT	LUMIERE	WARNLAMPE	INDICADOR
34	C15A01017	R90024	COPERCHIO POSTERIORE SCATOLA R240	LID	COUVERCLE	DECKEL	TAPA



100852_00



Cardano M06961A
 PTO shaft M06961A
 Arbre de transmission M06961A
 Gelenkwelle M06961A

Drawing Code: **100852_0**

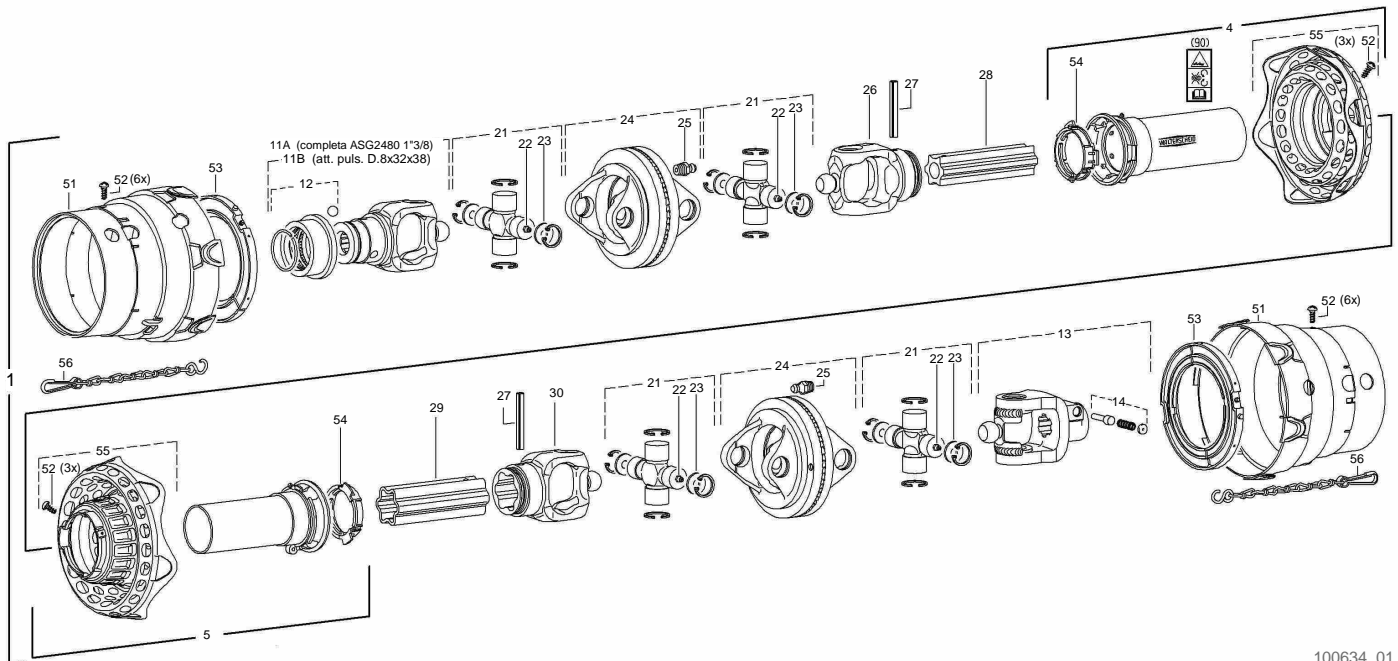
Accessories:

N°	Code	Old.	Descrizione / Description
#	MB0A00036	C04548	SPINA ELASTICA D.10X80
#	MF0A00063	R50012	"PULSANTE COMPLETO 1""3/8"
#	G00A00049	R50065	ANELLO GUIDA PROT. DI 62X4,5 (T67)
#	M72A00055	R50098	FORCELLA TUBO S4V ANELLO 62x4.5 (W)
#	M72A00056	R50099	FORCELLA TUBO S5H ANELLO 62x4.5 (W)
#	MH0A00022	R50119	CATENELLA PROTEZ.CARDANO L=550
#	G10A00092	R50168	"PROTEZIONE COMPLETA TIPO T67 ""OMOLOGATA CE"""
#	M72A00083	R50169	"FORCELLA T67 ATTACCO RAPIDO A PULSANTE 1.3/8""Z6"
#	M73A00051	R50170	TUBO STELLARE INTERNO RILSANIZZATO L=1530 FORO SPINA
#	M73A00052	R50171	TUBO STELLARE ESTERNO L=1540 FORO SPINA D.10
#	M71A00010	R50172	CROCIERA T67 D36X89
#	M72A00084	R50173	"FORCELLA T67 ATTACCO RAPIDO A BIGLIE 1.3/8""Z6"

GB	FR	D	E
SOCKET	GOUPILLE	STECKER	PASADOR
BUTTON	BOUTON	BUTTON	BOTÓN
RING	AMORTISSEUR	RING	ANILLO
FORK	MACHOIRE	GABEL	HORQUILLA
FORK	MACHOIRE	GABEL	HORQUILLA
CHAIN	CHAINE	KETTE	CADENA
PROTECTION	PROTECTION	SCHUTZ	PROTECCIÓN
FORK	MACHOIRE	GABEL	HORQUILLA
TUBE	TUBE	ROHR	TUBO
TUBE	TUBE	ROHR	TUBO
CRUISE	CROISIÈRE	CRUISE	CRUISE
FORK	MACHOIRE	GABEL	HORQUILLA

Codice cardano
Code pto shaft
Code de arbre de transmission
Code gelenkwelle

M10260W



100634_01



Cardano M10260W

PTO shaft M10260W

Arbre de transmission M10260W

Gelenkwelle M10260W

Drawing Code: **100634_1**

Accessories:

N°	Code	Old.	Descrizione / Description
1	M73A00001	M10260W	"CARD. WWZ2480-SD25/1 1960 S4LGA/S5 1"3/8Z=6-1"3/8Z=6"
4	G10A00106	R70157	PROT. CARD. EST. SCH25/1 A1500 (85.21.0)
5	G10A00107	R70158	PROT. CARD. INT. SCH25/1 J1500 (85.20.9)
11A	M72A00102	R70159	"FORCELLA ASG2480- 1"3/8 (6) COLLAR"
11B	M72A00123	R70251	FORCELLA ASG2480- D8X32X38 (RUSSIA)
12	M75A00107	R70160	"ATT. RAPIDO CL200 1"3/8 (AGRASET 172)"
13	M72A00103	R70161	"FORCELLA AG2480- 1"3/8 z=6 PULS."
14	MF0A00066	R70010	PULSANTE WALTERSCHEID 339107
21	M71A00013	R70162	CROCIERA COMPL 2480 WALT. (35.06.131)
22	MJ5A00013	R70163	INGRASSATORE DIN71412 AM 6 (63.11.01)
23	M90A00072	R70164	RONDELLA D31.95x2 (36.06.70)
24	M72A00104	R70165	FORCELLA DOPPIA DOPG2480 (35.41.05)
25	MJ5A00014	R70166	INGRASSAT. DIN71412 AM 8.2X1 (63.12.05)
26	M72A00105	R70167	FORCELLA TUBO RG2580-S4 (35.13.109)
27	MB0A00036	C04548	SPINA ELASTICA D.10X80
28	M73A00077	R70230	TUBO S4LGA-1380 RISALNIZZATO
29	M73A00078	R70231	TUBO S5-1360 STD
30	M72A00106	R70170	FORCELLA TUBO RG2480-S5 (35.14.174)
51	G00A00055	R70171	CONO DI PROTEZIONE SD25-2480 (85.01.02)
52	M80A00387	R70172	VITE AUTOFIL.D.3.5x9.5
53	C15A00947	R70173	ANELLO FISS.CONO SD25-2480 (82.83.14)
54	G00A00053	R70076	BOCCOLA PLASTICA PROT. W2500 087276
55	G10A00108	R70174	PROTEZ. FLESSIB. CONO SD25-WW (85.01.12)
56	MH0A00023	R70175	CATENELLA DI SICUREZZA L=600 (82.36.08)
#	M73A00001	M10260W	"CARD. WWZ2480-SD25/1 1960 S4LGA/S5 1"3/8Z=6-1"3/8Z=6"

GB	FR	D	E
UNIVERSAL JOINT	CARDAN	GELENKWELLE	CARDAN
PROTECTION	PROTECTION	SCHUTZ	PROTECCIÓN
PROTECTION	PROTECTION	SCHUTZ	PROTECCIÓN
FORK	MACHOIRE	GABEL	HORQUILLA
FORK	MACHOIRE	GABEL	HORQUILLA
CONNECTION	ATTELAGE	ANSCHLUSS	ATAQUE
FORK	MACHOIRE	GABEL	HORQUILLA
BUTTON	BOUTON	BUTTON	BOTÓN
CRUISE	CROISIÈRE	CRUISE	CRUISE
GREASE NIPPLE	GRAISSOR	FETTBUECHSE	ENGRASADOR
WASHER	RONDELLE	UNTERLEGSCHIEBE	ARANDELLA
FORK	MACHOIRE	GABEL	HORQUILLA
GREASE NIPPLE	GRAISSOR	FETTBUECHSE	ENGRASADOR
FORK	MACHOIRE	GABEL	HORQUILLA
SOCKET	GOUPILLE	STECKER	PASADOR
TUBE	TUBE	ROHR	TUBO
TUBE	TUBE	ROHR	TUBO
FORK	MACHOIRE	GABEL	HORQUILLA
CONE	CONE	KEGEL-	CONO
SCREW	VIS	SCHRAUBE	TORNILLO
RING	AMORTISSEUR	RING	ANILLO
BUSH	DOUILLE	BUCHSE	BOCOLA
PROTECTION	PROTECTION	SCHUTZ	PROTECCIÓN
CHAIN	CHAINE	KETTE	CADENA
UNIVERSAL JOINT	CARDAN	GELENKWELLE	CARDAN