

# Trincia

# TT91



[www.alpego.com](http://www.alpego.com)

Tel +39 0444/64.61.00

Fax +39 0444/64.61.99

e-mail: [info@alpego.com](mailto:info@alpego.com)

**ALPEGO s.p.a.**

*Sede Amministrativa:*

**Via Torri di Confine, 6 36053 GAMBELLARA (VICENZA) - ITALY**

*Sede Legale:*

**Via Giovanni e Giuseppe Cenzato, 9 36045 LONIGO (VICENZA) - ITALY**

Capitale sociale €2.000.000 i.v.

Cod. Fisc. / Part. IVA IT02009840246

R.E.A. 199795/VI/1996

Reg. Imp.VI N° 22374/VI/1996

N. Mecc. VI 011754

Copyright © 2009 Alpego s.p.a. ®

Tutti i diritti sono riservati. È vietata espressamente la ristampa o l'uso non autorizzato senza permesso scritto dalla Alpego s.p.a.

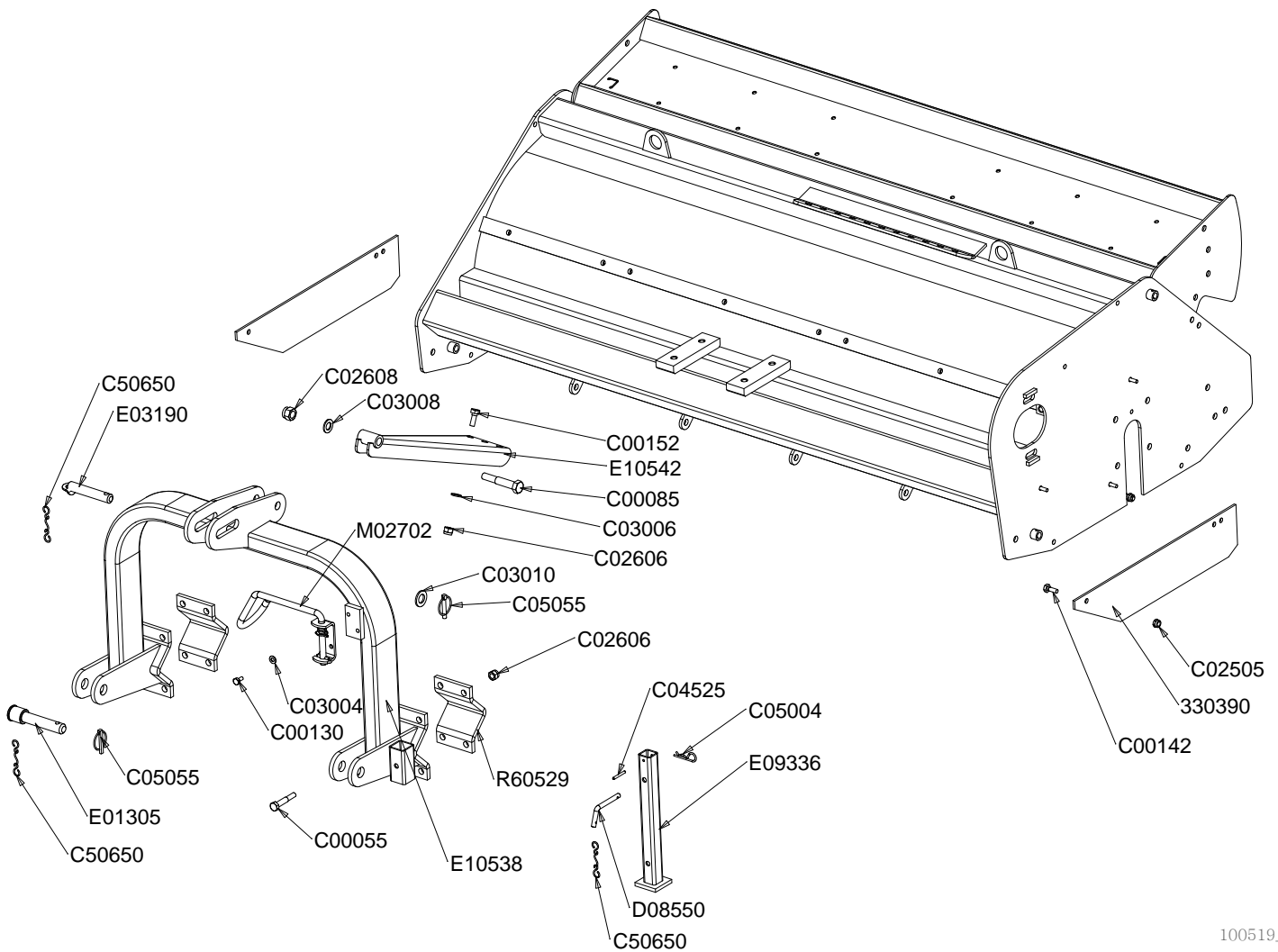
Tous droits réservés. Toute réimpression ou utilisation non autorisée sans la permission écrite de la Alpego s.p.a. est formellement interdite.

Alle Rechte vorbehalten. Nachdruck, Vervielfältigung und Verbreitung, auch auszugsweise, ist ohne schriftliche Genehmigung der Alpego s.p.a.

All rights reserved. Any reprinting or unauthorized use without the written permission of Alpego s.p.a. is expressly prohibited.

Todos los derechos reservados. Toda reproducción o uso no autorizado sin el consentimiento escrito de Alpego s.p.a. quedan expresamente prohibidos.

01/12/2015



100519\_00

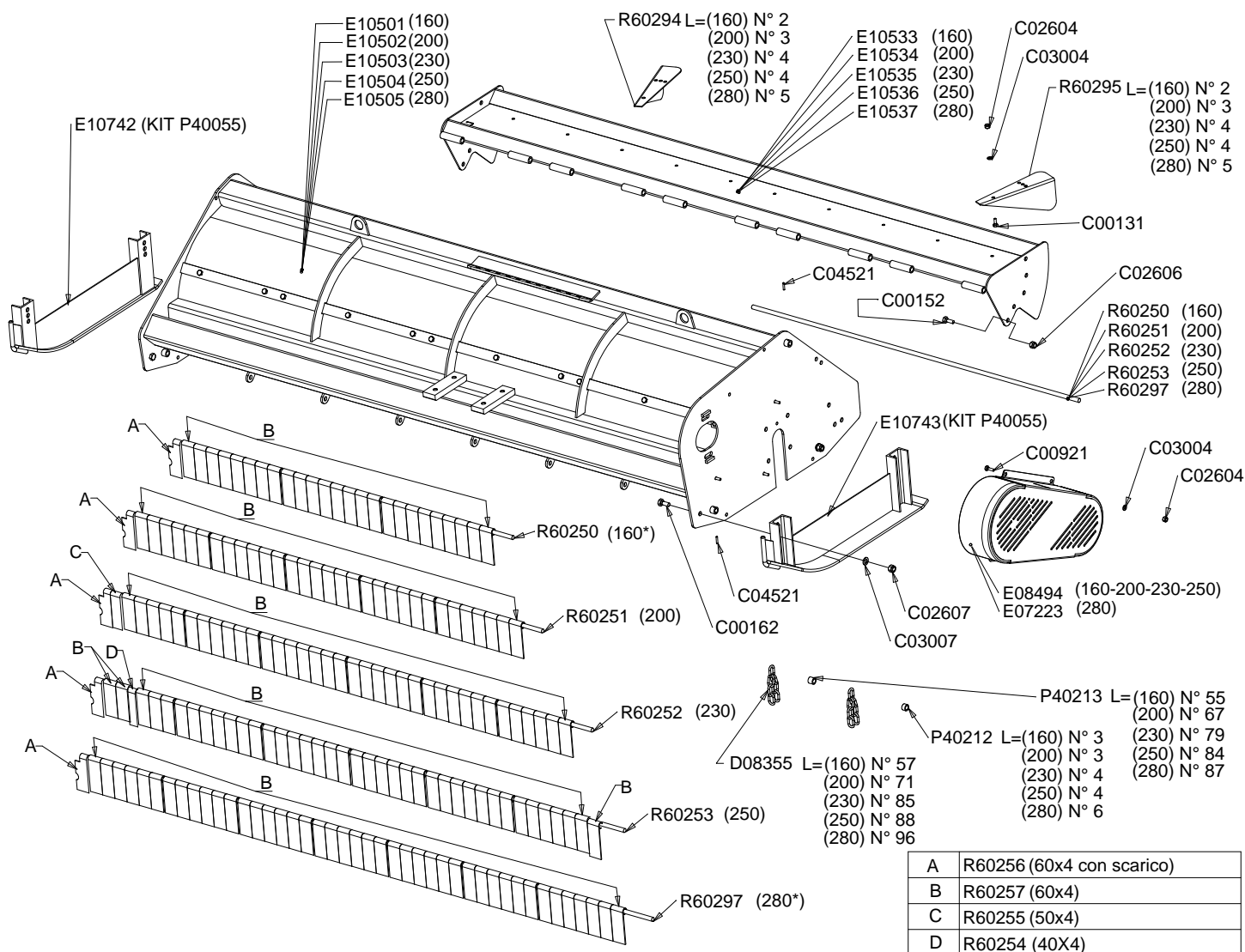


**Attacco a 3 punti**  
**3 Point Linkage**  
**Attelage A Trois Points**  
**Schraubenbefestigung**

Drawing Code: **100519\_0**

Accessories:

N°	Code	Old.	Descrizione /Description	GB	FR	D	E
#	C05A03541	330390	PROT. LATERALE 04826/1 SP6MM	PROTECTION	PROTECTION	SCHUTZ	PROTECCIÓN
#	M80A00048	C00055	VITE TE 88 PG FP M14X80 ZINC UNI 5737	SCREW	VIS	SCHRAUBE	TORNILLO
#	M80A00078	C00085	VITE TE 88 PG FP M20X110 ZINC UNI 5737	SCREW	VIS	SCHRAUBE	TORNILLO
#	M80A00117	C00130	VITE TE 88 PG FT M10X20 ZINC UNI 5739	SCREW	VIS	SCHRAUBE	TORNILLO
#	M80A00129	C00142	VITE TE 88 PG FT M12X30 ZINC UNI 5739	SCREW	VIS	SCHRAUBE	TORNILLO
#	M80A00137	C00152	VITE TE 88 PG FT M14X35 ZINC UNI 5739	SCREW	VIS	SCHRAUBE	TORNILLO
#	M85A00058	C02505	DADO AUTOBLOC BASSO 8 PG M12 H=12 UNI 7474	NUT	BOULONS	NUT	DADO
#	M85A00079	C02606	DADO AUTOBLOC ALTO 8 M14 H=16 UNI 7473	NUT	BOULONS	NUT	DADO
#	M85A00081	C02608	DADO AUTOBLOC ALTO 8 M20 H=22 UNI 7473	NUT	BOULONS	NUT	DADO
#	M90A00007	C03004	RONDELLA PIANA D.10,5 DIN125-A ZINC.	WASHER	RONDELLE	UNTERLEGSCHLEIBE	ARANDELLA
#	M90A00009	C03006	RONDELLA PIANA D.15 DIN125-A ZINC.	WASHER	RONDELLE	UNTERLEGSCHLEIBE	ARANDELLA
#	M90A00011	C03008	RONDELLA PIANA D.21 DIN125-A ZINC.	WASHER	RONDELLE	UNTERLEGSCHLEIBE	ARANDELLA
#	M90A00013	C03010	RONDELLA PIANA D.25 DIN125-A ZINC.	WASHER	RONDELLE	UNTERLEGSCHLEIBE	ARANDELLA
#	MB0A00017	C04525	SPINA ELASTICA D.6X50	SOCKET	GOUPILLE	STECKER	PASADOR
#	MB0A00087	C05004	SPINA A MOLLA D.4	SOCKET	GOUPILLE	STECKER	PASADOR
#	MB0A00096	C05055	SPINA A SCATTO D.10 CON TIRANTE IN GOMMA	SOCKET	GOUPILLE	STECKER	PASADOR
#	M79A00002	C50650	GOMMINO CON ANELLI L.240 MM.	RUBBER	CAOUTCHOUC	BELAG	GOMAS
#	M15A00105	D08550	PERNO D.12X85 FORO D.5 PIEGATO ***	PIN	PIVOT	STIFT	PIN
#	M15A00169	E01305	PERNO D.28X106 UT.FORO D.12 SALD ZINC***	PIN	PIVOT	STIFT	PIN
#	M15A00172	E03190	PERNO ROND.25X109 UT.FORO D.12 ZINC***	PIN	PIVOT	STIFT	PIN
#	C20A01606	E09336	PIEDINO APPOGGIO TRINCIA H390	FOOT	PIED	FUSS	PIE
#	M79A00013	M02702	GANCIO SUPP. CARDANO COMPL.***	HOOK	ATTACHE	HAKEN	ENGANCHE
#	C15A00920	R60529	MORSETTO DIAG TUBO 100 FIS KIT RUOTE TT96-300	TERMINAL	TERMINAL	TERMINAL	TERMINALES





**Telaio - slitte**  
**Frame - Skids**  
**Chassis - Patins**  
**Rahmen - Gleitkufen**

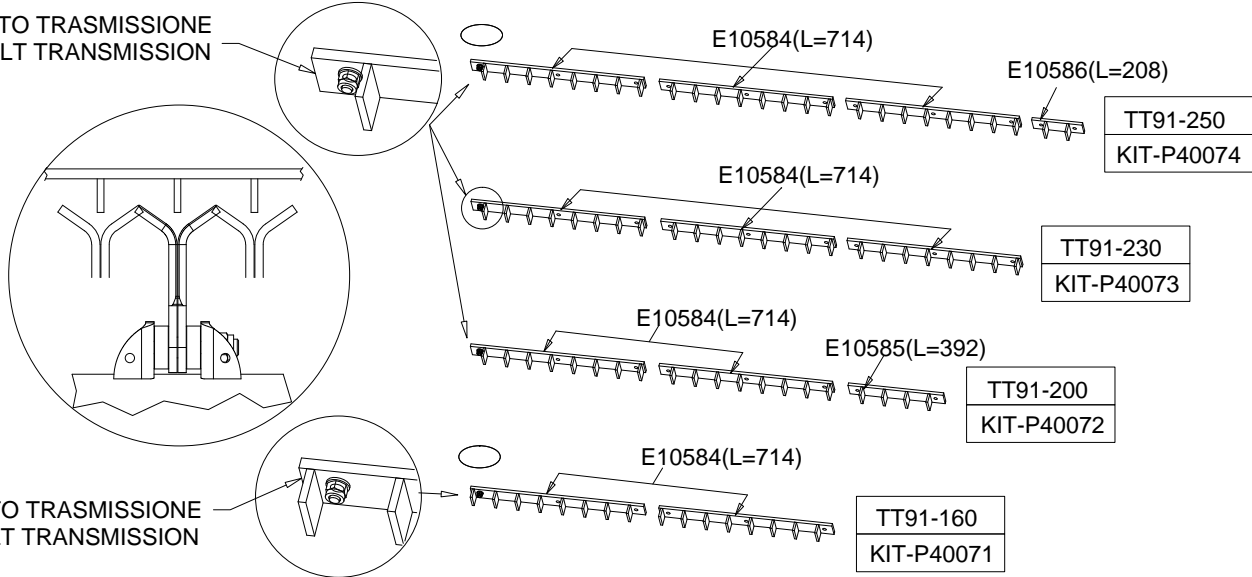
Drawing Code: **100520\_0**

Accessories:

N°	Code	Old.	Descrizione /Description	GB	FR	D	E
#	M80A00118	C00131	VITE TE 88 PG FT M10X25 ZINC UNI 5739	SCREW	VIS	SCHRAUBE	TORNILLO
#	M80A00137	C00152	VITE TE 88 PG FT M14X35 ZINC UNI 5739	SCREW	VIS	SCHRAUBE	TORNILLO
#	M80A00148	C00162	VITE TE 88 PG FT M16X35 ZINC UNI 5739	SCREW	VIS	SCHRAUBE	TORNILLO
#	M80A00364	C00921	VITE TE 88 PG FT M10X30 UNI 5739 (NERA)	SCREW	VIS	SCHRAUBE	TORNILLO
#	M85A00077	C02604	DADO AUTOBLOC ALTO 8 M10 H=11.5 UNI 7473	NUT	BOULONS	NUT	DADO
#	M85A00079	C02606	DADO AUTOBLOC ALTO 8 M14 H=16 UNI 7473	NUT	BOULONS	NUT	DADO
#	M85A00080	C02607	DADO AUTOBLOC ALTO 8 M16 H=18 UNI 7473	NUT	BOULONS	NUT	DADO
#	M90A00007	C03004	RONDELLA PIANA D.10,5 DIN125-A ZINC.	WASHER	RONDELLE	UNTERLEGSCHLEIBE	ARANDELLA
#	M90A00010	C03007	RONDELLA PIANA D.17 DIN125-A ZINC.	WASHER	RONDELLE	UNTERLEGSCHLEIBE	ARANDELLA
#	MB0A00013	C04521	SPINA ELASTICA D.6X30	SOCKET	GOUPILLE	STECKER	PASADOR
#	MH0A00016	D08355	CATENA PROTEZ.TR30-TT91-7 ANELLI FILO D.7	CHAIN	CHAINE	KETTE	CADENA
#	C20A01314	E07223	CARTER COMPL. TT90 160/250**** H 152	HOUSING	CARTER	GEHAUSE	CARTER
#	C20A01470	E08494	CARTER COMPL. TT91 160/250**** H122	HOUSING	CARTER	GEHAUSE	CARTER
#	C20A01751	E10533	COFANO POSTERIORE TT91-160	BONNET	CAPOT	MOTORHAUBE	CAPÓ
#	C20A01752	E10534	COFANO POSTERIORE TT91-200	BONNET	CAPOT	MOTORHAUBE	CAPÓ
#	C20A01753	E10535	COFANO POSTERIORE TT91-230	BONNET	CAPOT	MOTORHAUBE	CAPÓ
#	C20A01754	E10536	COFANO POSTERIORE TT91-250	BONNET	CAPOT	MOTORHAUBE	CAPÓ
#	C20A01755	E10537	COFANO POSTERIORE TT91-280	BONNET	CAPOT	MOTORHAUBE	CAPÓ
#	G10A00072	P40212	DISTANZIALE LAT. CATENE PROT. L=15	SPACER	ENTRETOISE	ABSTANDSTUECK	ESPACIADORES
#	G10A00073	P40213	DISTANZIALE LAT. CATENE PROT. L=21	SPACER	ENTRETOISE	ABSTANDSTUECK	ESPACIADORES
#	C15A00876	R60250	ASTA SOSTEGNO BANDIERINE TT90-160	ROD	POLE	STIFT	POLOS
#	C15A00877	R60251	ASTA SOSTEGNO BANDIERINE TT90-200	ROD	POLE	STIFT	POLOS
#	C15A00878	R60252	ASTA SOSTEGNO BANDIERINE TT90-230	ROD	POLE	STIFT	POLOS
#	C15A00879	R60253	ASTA SOSTEGNO BANDIERINE TT90-250	ROD	POLE	STIFT	POLOS
#	C10A03445	R60254	BANDIERINA DI PROT. 40x4 TT90 (7779)	PLATE	DRAPEAUX	BLECH	BANDERIN
#	C10A03446	R60255	BANDIERINA DI PROT. 50x4 TT90 (7780)	PLATE	DRAPEAUX	BLECH	BANDERIN
#	C10A03447	R60256	BANDIERINA DI PROT. 60x4 TT90 (10324)	PLATE	DRAPEAUX	BLECH	BANDERIN
#	C10A03448	R60257	BANDIERINA DI PROT. 60x4 TT90-160/250	PLATE	DRAPEAUX	BLECH	BANDERIN
#	C15A00894	R60294	DEFLETTORE DESTRO TT91	DEFLECTOR	DEFLECTEUR	ABWEISER	DEFLECTORES
#	C15A00895	R60295	DEFLETTORE SINISTRO TT91	DEFLECTOR	DEFLECTEUR	ABWEISER	DEFLECTORES
#	C15A00896	R60297	ASTA SOSTEGNO BANDIERINE TT90-280	ROD	POLE	STIFT	POLOS

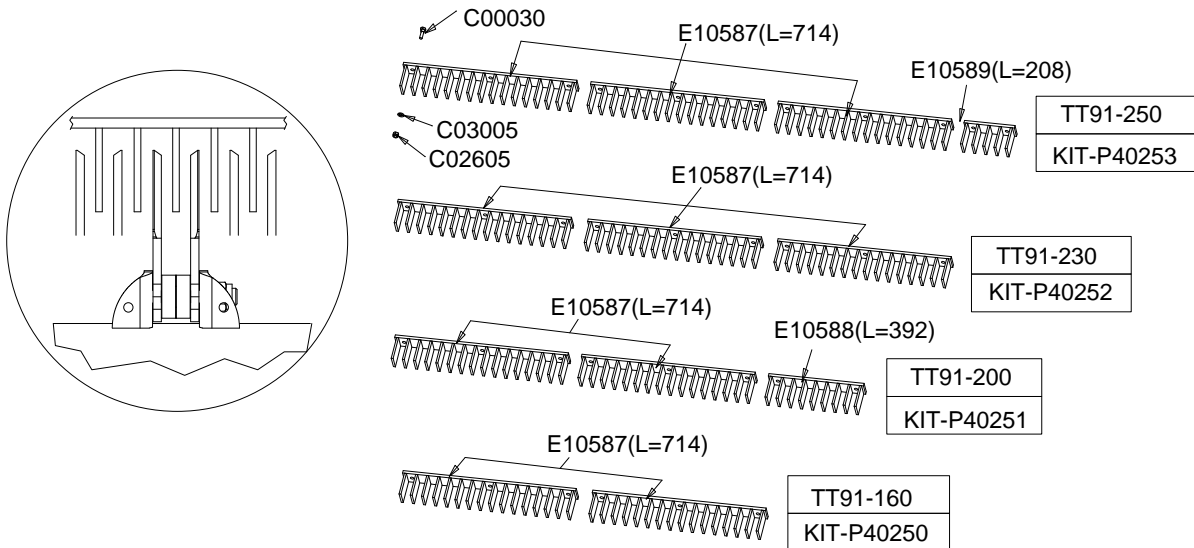
## VERSIONE CONTROCOLTELLI UNIVERSALI

LATO TRASMISSIONE  
BELT TRANSMISSION

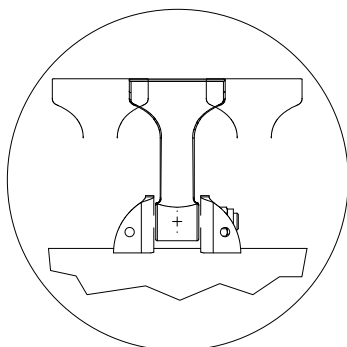


LATO TRASMISSIONE  
BELT TRANSMISSION

## VERSIONE CONTROCOLTELLI DIRITTI



## VERSIONE MAZZE



NO CONTROCOLTELLI  
NO AGAINST KNIVES  
NO CONTRE KNIVES  
NO CONTRA CUCHILLOS





## Gruppo controcoltelli

Against knives group

Groupe contre couteau

Gegen messer grupp

Drawing Code:

**100797\_1**

Accessories:

N°	Code	Old.	Descrizione /Description	GB	FR	D	E
#	M80A00027	C00030	VITE TE 88 PG FP M12X40 ZINC UNI 5737	SCREW	VIS	SCHRAUBE	TORNILLO
#	M85A00078	C02605	DADO AUTOBLOC ALTO 8 M12 H=14 UNI 7473	NUT	BOULONS	NUT	DADO
#	M90A00008	C03005	RONDELLA PIANA D.13 DIN125-A ZINC.	WASHER	RONDELLE	UNTERLEGSCHNEIBE	ARANDELLA
#	C20A01756	E10584	CONTROCOLTELLO COLT UNIVERS H=40 P=92 L=714 TT91/93	COUNTERBLADE	CONTRE COUTEAU	GEGENSCHNEIDE	CONTRA EL CUCHILLO
#	C20A01757	E10585	CONTROCOLTELLO COLT UNIVERS H=40 P=92 L=392 TT91/93	COUNTERBLADE	CONTRE COUTEAU	GEGENSCHNEIDE	CONTRA EL CUCHILLO
#	C20A01758	E10586	CONTROCOLTELLO COLT UNIVERS H=40 P=92 L=208 TT91/93	COUNTERBLADE	CONTRE COUTEAU	GEGENSCHNEIDE	CONTRA EL CUCHILLO
#	C20A01759	E10587	CONTROCOLTELLO COLT DIRITTI H=100 P=46 L=714 TT91/93/96	COUNTERBLADE	CONTRE COUTEAU	GEGENSCHNEIDE	CONTRA EL CUCHILLO
#	C20A01760	E10588	CONTROCOLTELLO COLT DIRITTI H=100 P=46 L=392 TT91/93	COUNTERBLADE	CONTRE COUTEAU	GEGENSCHNEIDE	CONTRA EL CUCHILLO
#	C20A01761	E10589	CONTROCOLTELLO COLT DIRITTI H=100 P=46 L=208 TT91/93	COUNTERBLADE	CONTRE COUTEAU	GEGENSCHNEIDE	CONTRA EL CUCHILLO
#	S80A00016	P40071	CONTROCOLTELLO TT90-160 UNIVERS.	COUNTERBLADE	CONTRE COUTEAU	GEGENSCHNEIDE	CONTRA EL CUCHILLO
#	S80A00017	P40072	CONTROCOLTELLO TT90-200 UNIVERS.	COUNTERBLADE	CONTRE COUTEAU	GEGENSCHNEIDE	CONTRA EL CUCHILLO
#	S80A00018	P40073	CONTROCOLTELLO TT90-230 UNIVERS.	COUNTERBLADE	CONTRE COUTEAU	GEGENSCHNEIDE	CONTRA EL CUCHILLO
#	S80A00019	P40074	CONTROCOLTELLO TT90-250 UNIVERS.	COUNTERBLADE	CONTRE COUTEAU	GEGENSCHNEIDE	CONTRA EL CUCHILLO
#	S80A00028	P40250	CONTROCOLTELLO TT91-160 DIRITTO	COUNTERBLADE	CONTRE COUTEAU	GEGENSCHNEIDE	CONTRA EL CUCHILLO
#	S80A00029	P40251	CONTROCOLTELLO TT91-200 DIRITTO	COUNTERBLADE	CONTRE COUTEAU	GEGENSCHNEIDE	CONTRA EL CUCHILLO
#	S80A00030	P40252	CONTROCOLTELLO TT91-230 DIRITTO	COUNTERBLADE	CONTRE COUTEAU	GEGENSCHNEIDE	CONTRA EL CUCHILLO
#	S80A00031	P40253	CONTROCOLTELLO TT91-250 DIRITTO	COUNTERBLADE	CONTRE COUTEAU	GEGENSCHNEIDE	CONTRA EL CUCHILLO

## Rotore con supporti e trasmissione

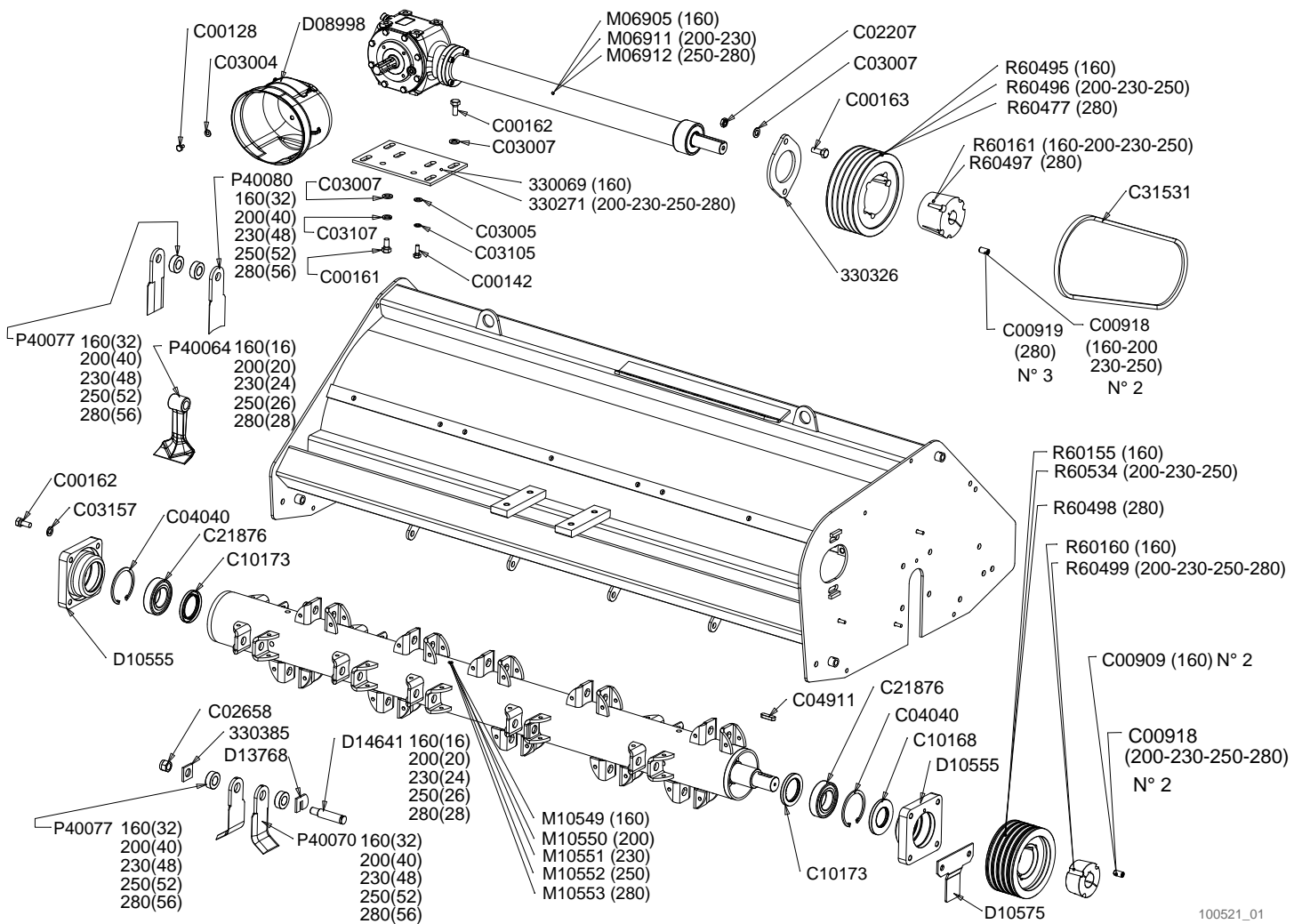
Rotor And Holder-Pulley Transmission

Rotor Au Support-Transmission

Rotor-Stutze Riemenantrieb

Drawing Code: **100521\_1**

Accessories:



100521\_01





## Rotore con supporti e trasmissione

Rotor And Holder-Pulley Transmission

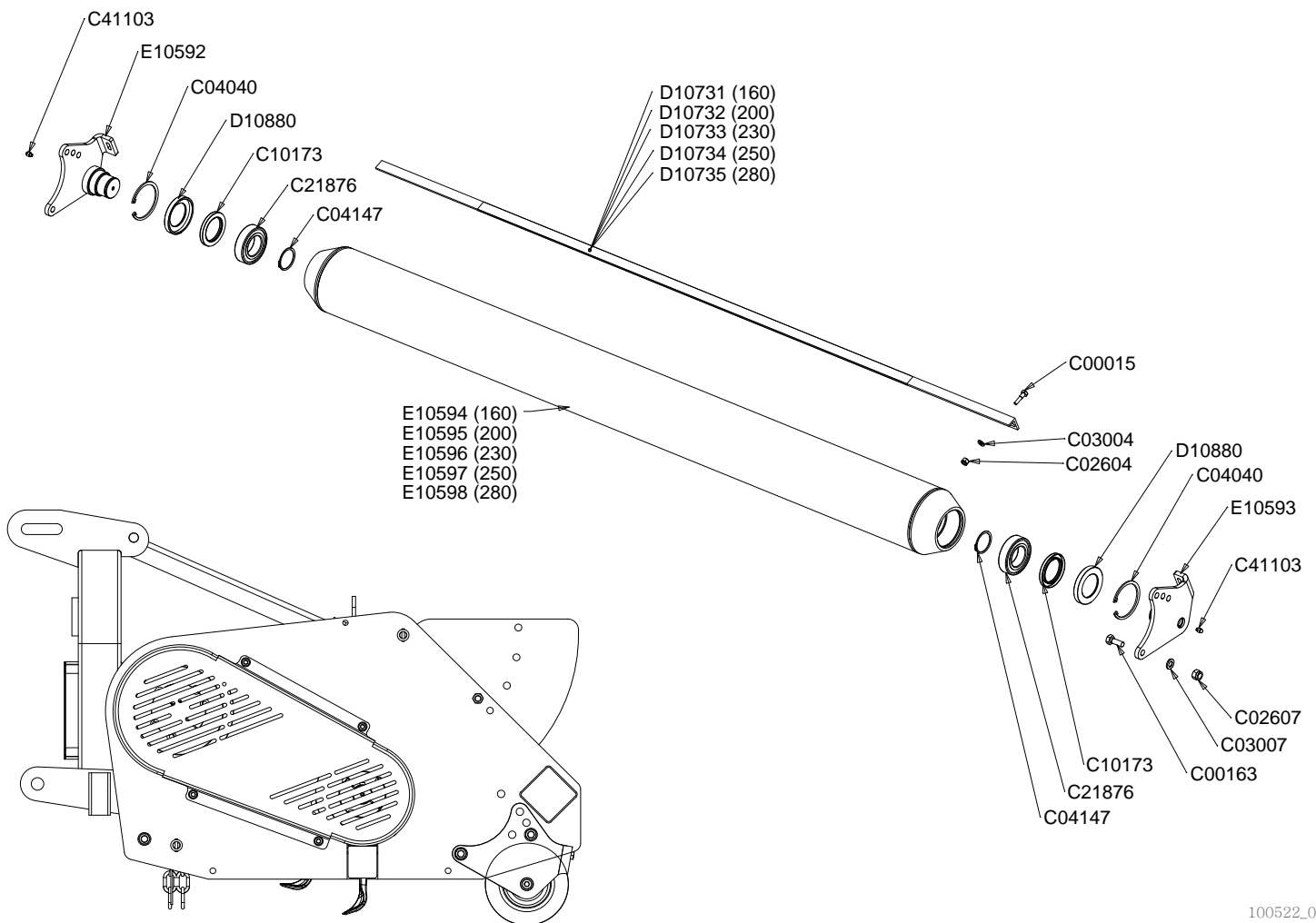
Rotor Au Support-Transmission

Rotor-Stutze Riemenantrieb

Drawing Code: **100521\_1**

Accessories:

N°	Code	Old.	Descrizione /Description	GB	FR	D	E
#	C05A03241	330069	PIASTRA ANC. MOLT. TT90 03895 8MM	PLATE	PLAQUE	PLATTE	PLACA
#	C05A03422	330271	PIASTRA ANC.MOLTIPL. TT90 03896 SP8MM	PLATE	PLAQUE	PLATTE	PLACA
#	C05A03477	330326	SUPP. MOLTIPL. TT90 03013 SP10MM	SUPPORT	SUPPORT	STUTZE	APOYO
#	C05A03536	330385	PIASTRINA PER PERNO 04871 SP6MM	METAL STRAP	METAL DEPLOYE	BANDEISEN	PLATILLO
#	M80A00116	C00128	VITE TE 88 PG FT M10X16 ZINC UNI 5739	SCREW	VIS	SCHRAUBE	TORNILLO
#	M80A00129	C00142	VITE TE 88 PG FT M12X30 ZINC UNI 5739	SCREW	VIS	SCHRAUBE	TORNILLO
#	M80A00147	C00161	VITE TE 88 PG FT M16X30 ZINC UNI 5739	SCREW	VIS	SCHRAUBE	TORNILLO
#	M80A00148	C00162	VITE TE 88 PG FT M16X35 ZINC UNI 5739	SCREW	VIS	SCHRAUBE	TORNILLO
#	M80A00149	C00163	VITE TE 88 PG FT M16X40 ZINC UNI 5739	SCREW	VIS	SCHRAUBE	TORNILLO
#	M80A00357	C00909	"VITE STEI 1/2""X25 (BUSSOLA CON 2517)"	SCREW	VIS	SCHRAUBE	TORNILLO
#	M80A00361	C00918	"VITE STEI 5/8""X32 (BUSSOLA 3020)"	SCREW	VIS	SCHRAUBE	TORNILLO
#	M80A00362	C00919	"VITE STEI 1/2""X32 (BUSSOLA CON 3535)"	SCREW	VIS	SCHRAUBE	TORNILLO
#	M85A00045	C02207	DADO BASSO 8 PG M16 UNI 5589 ZINC.	NUT	BOULONS	NUT	DADO
#	M85A00090	C02658	DADO AUTOBLOC ALTO 8 M20X1,5 H=22 UNI 7473	NUT	BOULONS	NUT	DADO
#	M90A00007	C03004	RONDELLA PIANA D.10,5 DIN125-A ZINC.	WASHER	RONDELLE	UNTERLEGSCHIEBE	ARANDELLA
#	M90A00008	C03005	RONDELLA PIANA D.13 DIN125-A ZINC.	WASHER	RONDELLE	UNTERLEGSCHIEBE	ARANDELLA
#	M90A00010	C03007	RONDELLA PIANA D.17 DIN125-A ZINC.	WASHER	RONDELLE	UNTERLEGSCHIEBE	ARANDELLA
#	M90A00035	C03105	RONDELLA GROWER D.12 DIN 127	WASHER	RONDELLE	UNTERLEGSCHIEBE	ARANDELLA
#	M90A00037	C03107	RONDELLA GROWER D.16 DIN 127 ZINCATA	WASHER	RONDELLE	UNTERLEGSCHIEBE	ARANDELLA
#	M90A00048	C03157	RONDELLA GROWER RINF. D.16 ASA B27 ZINCO-LAMELLARE	WASHER	RONDELLE	UNTERLEGSCHIEBE	ARANDELLA
#	MA0A00015	C04040	SEEGER FORO D.110 UNI 7437	SEEGER	SEEGER	SEEGER	SEEGER
#	MC0A00008	C04911	LINGUETTA 14X9X50 UNI 6604A	TONGUE	CLAVETTE	ZUNGE	LENGUA
#	H00A00072	C10168	PARAOLIO BASL D.60X110X12	SEALING RING	JOINT SPI	OELABDICHTUNG	PARAOLIO
#	H00A00077	C10173	PARAOLIO BASL D.70X100X10	SEALING RING	JOINT SPI	OELABDICHTUNG	PARAOLIO
#	M20A00108	C21876	CUSCINETTO OR.SFE 2212E 60X110X28 CLASSE B	BEARING	ROULEMENT	KUGELLAGER	COJINETE
#	M55A00017	C31531	"CINGHIA ""SPB"" 1650 (TT93)"	BELT	CEINTURE	RIEMEN	CORREA
#	G10A00051	D08998	PROT. OVALE 210X275XH150 FORATA	PROTECTION	PROTECTION	SCHUTZ	PROTECCIÓN
#	C05A07410	D13768	PIASTRINA FERMO-PERNO COLTELLI TT93	METAL STRAP	METAL DEPLOYE	BANDEISEN	PLATILLO
#	M15A00159	D14641	PERNO COLTELLI CORTO TT93-97 (M20X1,5)	PIN	PIVOT	STIFT	PIN
#	M65A00082	M06905	MOLTIPLIC. R241-1/3-RL-780-D40	MULTIPLIER	MULTIPLICATEUR	UEBERSETZUNGSGETRIEBE	MULTIPLICADOR
#	M65A00089	M06911	MOLTIPLIC. RS24-1/3-RL-1060-D40	MULTIPLIER	MULTIPLICATEUR	UEBERSETZUNGSGETRIEBE	MULTIPLICADOR
#	M65A00090	M06912	MOLTIPLIC. RS24-1/3-RL-1200-D40	MULTIPLIER	MULTIPLICATEUR	UEBERSETZUNGSGETRIEBE	MULTIPLICADOR
#	MK0A00215	P40064	MAZZA TRINCIA FORO=26 LARG=114 R=171.5	HAMMER	MARTEAUX	HAMMERSCHLEGEL	MAZA/MARTILLO
#	MK0A00218	P40070	COLTELLO UNIVERSALE TRISTOC R=170	BLADE	COUTEAU	MESSER	CUCHILLO
#	C15A00800	P40077	DISTANZIALE FORO 25.5 H17 D.55 (XCOLT)	SPACER	ENTRETOISE	ABSTANDSTUECK	ESPACIADORES
#	MK0A00219	P40080	COLTELLO DIRITTO TRISTOC R=175	BLADE	COUTEAU	MESSER	CUCHILLO
#	M60A00020	R60155	PULEGGIA 212x3 SPB	PULLEY	POULIE	RIEMENSCHIEBE	POLEAS
#	M75A00075	R60160	BUSSOLA CONICA (2517) 65-45 D=45	BUSHING	ENTRETOISE	BUCHSE	BRUJULA
#	M75A00076	R60161	BUSSOLA CONICA (3020) 75-50 D=40	BUSHING	ENTRETOISE	BUCHSE	BRUJULA
#	M60A00024	R60477	PULEGGIA 250X5 SPB	PULLEY	POULIE	RIEMENSCHIEBE	POLEAS
#	M60A00027	R60495	PULEGGIA 250X3 SPB	PULLEY	POULIE	RIEMENSCHIEBE	POLEAS
#	M60A00028	R60496	PULEGGIA 250X4 SPB	PULLEY	POULIE	RIEMENSCHIEBE	POLEAS
#	M75A00084	R60497	BUSSOLA CONICA (3535) 90-90 D.40	BUSHING	ENTRETOISE	BUCHSE	BRUJULA
#	M60A00029	R60498	PULEGGIA 212X5 SPB	PULLEY	POULIE	RIEMENSCHIEBE	POLEAS
#	M75A00085	R60499	BUSSOLA CONICA (3020) 75-50 D=45	BUSHING	ENTRETOISE	BUCHSE	BRUJULA
#	M60A00030	R60534	PULEGGIA 212X4 SPB MOZZO CENTR	PULLEY	POULIE	RIEMENSCHIEBE	POLEAS





**Rullo posteriore**  
 Rear Roller  
 Rouleau Posterieur  
 Hinter Walze

Drawing Code: **100522\_1**

Accessories:

N°	Code	Old.	Descrizione /Description	GB	FR	D	E
#	M80A00012	C00015	VITE TE 88 PG FP M10X40 ZINC UNI 5737	SCREW	VIS	SCHRAUBE	TORNILLO
#	M80A00149	C00163	VITE TE 88 PG FT M16X40 ZINC UNI 5739	SCREW	VIS	SCHRAUBE	TORNILLO
#	M85A00077	C02604	DADO AUTOBLOC ALTO 8 M10 H=11.5 UNI 7473	NUT	BOULONS	NUT	DADO
#	M85A00080	C02607	DADO AUTOBLOC ALTO 8 M16 H=18 UNI 7473	NUT	BOULONS	NUT	DADO
#	M90A00007	C03004	RONDELLA PIANA D.10.5 DIN125-A ZINC.	WASHER	RONDELLE	UNTERLEGSCHIEBE	ARANDELLA
#	M90A00010	C03007	RONDELLA PIANA D.17 DIN125-A ZINC.	WASHER	RONDELLE	UNTERLEGSCHIEBE	ARANDELLA
#	MA0A00015	C04040	SEEGER FORO D.110 UNI 7437	SEEGER	SEEGER	SEEGER	SEEGER
#	MA0A00046	C04147	SEEGER ALBERO D.60 UNI 7435	SEEGER	SEEGER	SEEGER	SEEGER
#	H00A00077	C10173	PARAOLIO BASL D.70X100X10	SEALING RING	JOINT SPI	OELABDICHTUNG	PARAOLIO
#	M20A00108	C21876	CUSCINETTO OR.SFE 2212E 60X110X28 CLASSE B	BEARING	ROULEMENT	KUGELLAGER	COJINETE
#	MJ5A00003	C41103	INGRASSATORE M8X1.25 DRITTO ESAGONO 11.	GREASE NIPPLE	GRAISSOR	FETTBUECHSE	ENGRASADOR
#	C15A00597	D10880	ANELLO D.110 PORTA PARAOLIO TR30	RING	AMORTISSEUR	RING	ANILLO
#	C20A01762	E10592	SUPPORTO RULLO DES. TT91	SUPPORT	SUPPORT	STUTZE	APOYO
#	C20A01763	E10593	SUPPORTO RULLO SIN. TT91	SUPPORT	SUPPORT	STUTZE	APOYO

## Coppia ruote posteriori

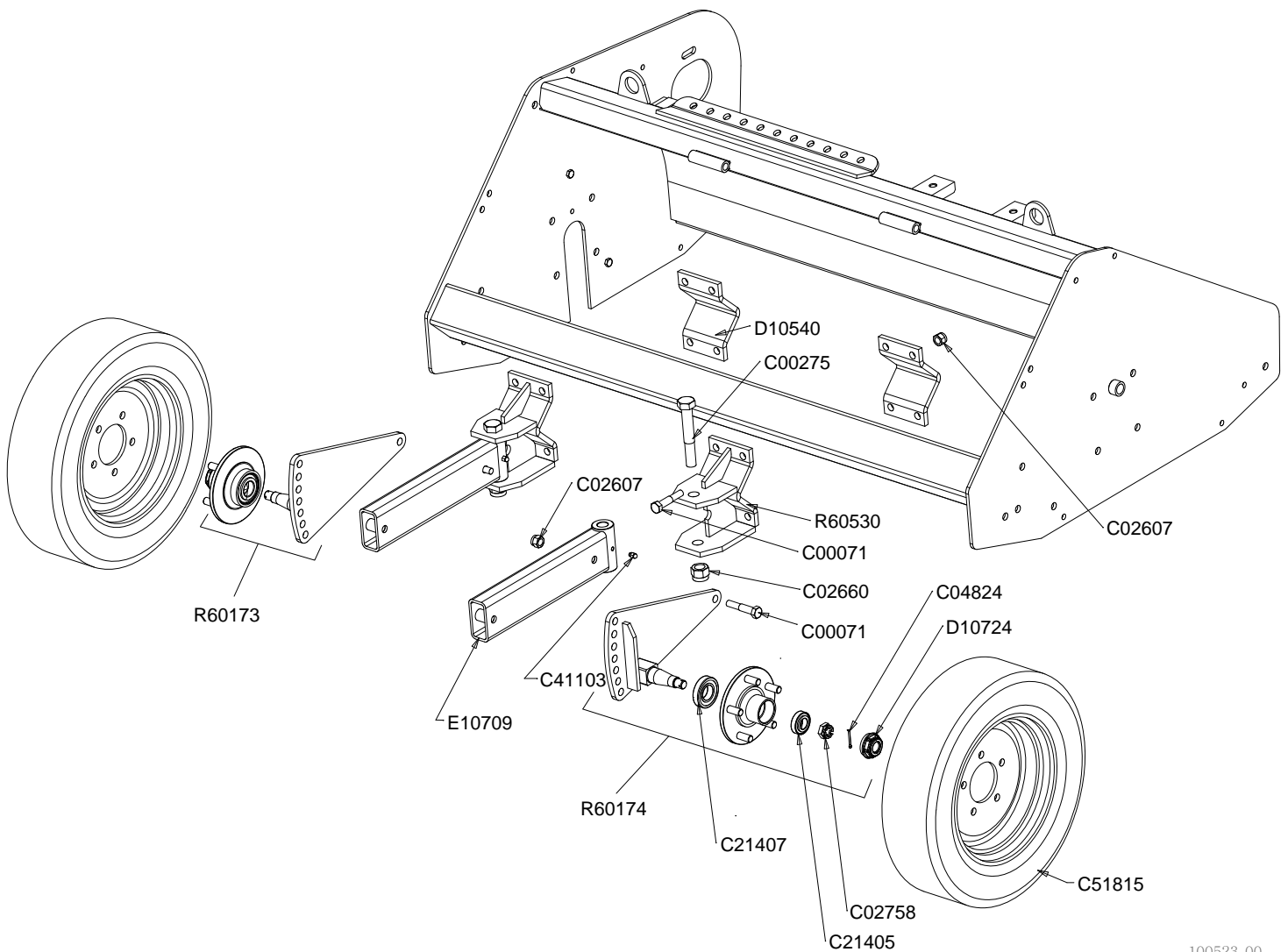
Posterior Couple Of Wheels

Couple Roues Posterieures

Kupeln Hintere Rader

Drawing Code: **100523\_0**

Accessories:



100523\_00



## Coppia ruote posteriori

Posterior Couple Of Wheels

Couple Roues Posterieures

Kupeln Hintere Rader

Drawing Code:

**100523\_0**

Accessories:

N°	Code	Old.	Descrizione /Description	GB	FR	D	E
#	M80A00064	C00071	VITE TE 88 PG FP M16x80 ZINC UNI 5737	SCREW	VIS	SCHRAUBE	TORNILLO
#	M80A00209	C00275	VITE TE 88 PF FP M24X2X150 ZINC UNI 5738	SCREW	VIS	SCHRAUBE	TORNILLO
#	M85A00080	C02607	DADO AUTOBLOC ALTO 8 M16 H=18 UNI 7473	NUT	BOULONS	NUT	DADO
#	M85A00092	C02660	DADO AUTOBLOC ALTO 8 M24X2 H=28 UNI 7473	NUT	BOULONS	NUT	DADO
#	M85A00100	C02758	DADO AD INTAGLI PF M20X1,5 UNI 5594	NUT	BOULONS	NUT	DADO
#	MB5A00011	C04824	COPPIGLIA D.4X40 UNI 1336	COTTER PIN	GOUPILLE	SPLINT	COPPIGLIA
#	M20A00057	C21405	CUSCINETTO 30205 25X52X16,25	BEARING	ROULEMENT	KUGELLAGER	COJINETE
#	M20A00059	C21407	CUSCINETTO 30207 35X72X18,25 J2	BEARING	ROULEMENT	KUGELLAGER	COJINETE
#	MJ5A00003	C41103	INGRASSATORE M8X1.25 DRITTO ESAGONO 11.	GREASE NIPPLE	GRAISSOR	FETTBUECHSE	ENGRASADOR
#	M00A00011	C51815	RUOTA COMPL PNEUM 165/70 R14 5 FORI 81T	WHEEL	ROUE	RAD	RUEDA
#	C20A02500	R60173	BRACCIO SUPP. REG.RUOTINO SINISTRO (6087)	ARM	BRAS	ARM	BRAZO
#	C20A02501	R60174	BRACCIO SUPP. REG.RUOTINO DESTRO (6060)	ARM	BRAS	ARM	BRAZO
#	C20A02543	R60530	SUPPORTO RUOTA SNODO LATERALE TT96-300	SUPPORT	SUPPORT	STUTZE	APOYO

**Moltiplicatore M06905 (160/180)**

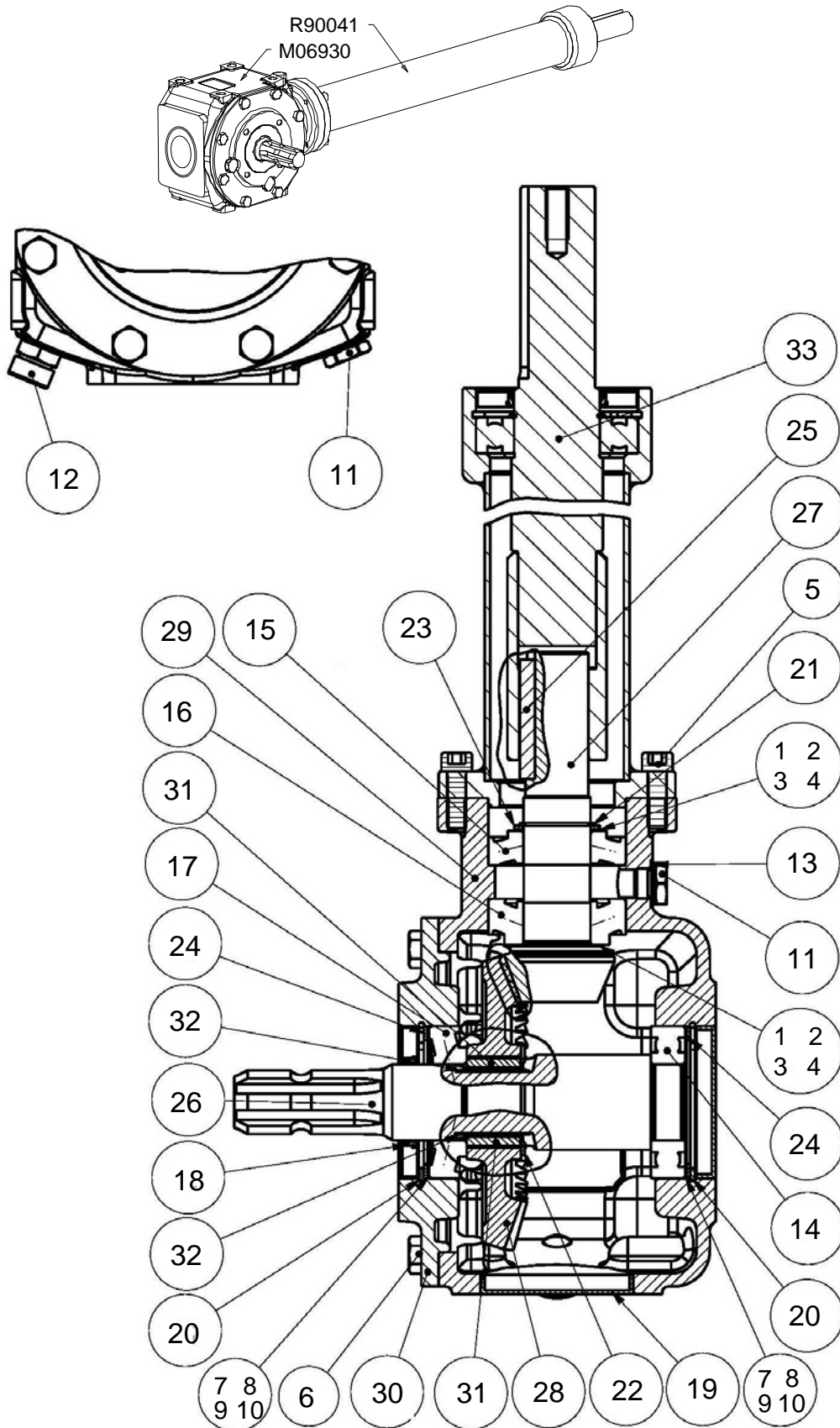
Overgear M06905 (160/180)

Multiplicateur M06905 (160/180)

Übersetzen M06905 (160/180)

Drawing Code: **100455\_0\_f1**

Accessories:



100455\_00\_f1





## Moltiplicatore M06905 (160/180)

Overgear M06905 (160/180)

Multiplicateur M06905 (160/180)

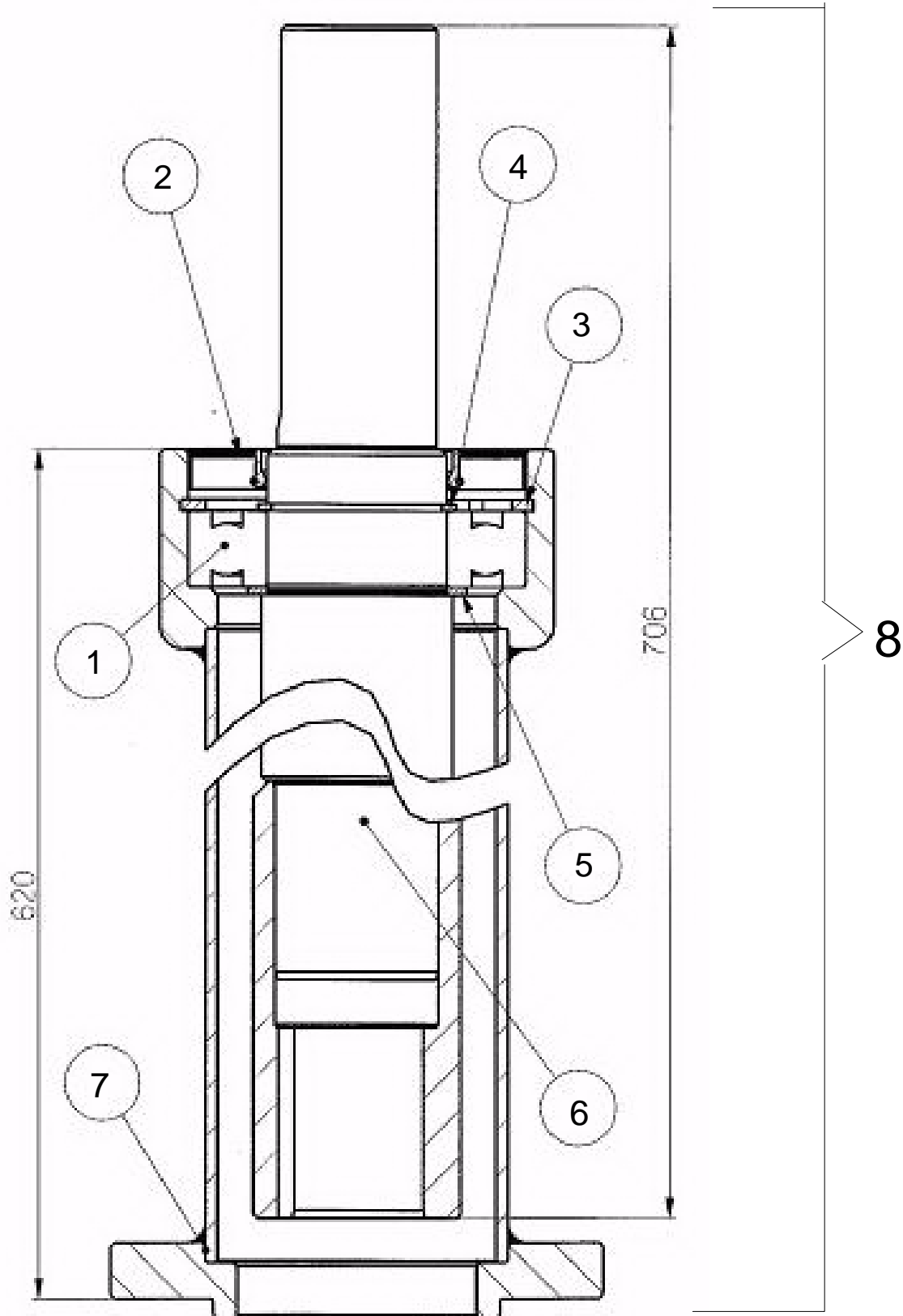
Übersetzen M06905 (160/180)

Drawing Code: **100455\_0\_f1**

Accessories:

N°	Code	Old.	Descrizione /Description
11	H45A00016	C41225	TAPPO M16X1,5 (32.A)
12	H65A00002	C41230	TAPPO SFIATO M16X1,5 (30.A) LABIRINTO
18	H00A00101	C10123	PARAOILIO BASL D.40X80X10
25	MC0A00021		LINGUETTA 10X8X63 UNI6604A
26	M45A00119	R90015	"ALBERO P.T.O 1"3/8 PER RUOTA LIBERA TL30"
27	M40A00139	R90016	PIGNONE CONICO Z=12 M=4,23 TL30-TL32
28	M40A00140	R90017	CORONA CONICA PER RUOTA LIBERA Z=37 M=4,23
29	C15A01016	R90018	SCATOLA RIDUTTORE R240 TL30-TL32
30	M35A00082	R90019	FLANGIA P.T.O RIDUTTORE R240 TL30-TL32
31	M75A00143	R90020	KIT NOTTOLINO L=28 + MOLLA RUOTA LIBERA TL30-TL32
32	MF5A00085	R90021	MOLLA PER RUOTA LIBERA TL30-TL32
33	M65A00157	R90041	PROLUNGA COMPL. 780 CH M12 R241
#	M65A00099	M06930	MOLTIPLIC. R240-1/3-RL-D33
#	M65A00157	R90041	PROLUNGA COMPL. 780 CH M12 R241

GB	FR	D	E
PLUG	BOUCHON	STOEPSSEL	ENCHUFE
PLUG	BOUCHON	STOEPSSEL	ENCHUFE
SEALING RING	JOINT SPI	OELABDICHTUNG	PARAOILIO
TONGUE	CLAVETTE	ZUNGE	LENGUA
SHAFT	ARBRE	WELLE	EJE
PINION	PIGNON	RITZEL	PIÑÓN
CROWN	COURONNE	KRONE	CORONA
BOX	BOITE	SCHACTEL	RECUADRO
FLANGE	FLANC	FLANSCH	FLANGE
KIT	KIT	KIT	KIT
SPRING	RESSORT	FEDER	MUELLE
EXTENSION	EXTENSION	VERLAENGERUNG	EXTENSIÓN
MULTIPLIER	MULTIPLICATEUR	UEBERSETZUNGSGETRIEBE	MULTIPLICADOR
EXTENSION	EXTENSION	VERLAENGERUNG	EXTENSIÓN



100455\_00\_f2



## Prolunga moltiplicatore M06905 (160/180)

Overgear M06905 (160/180)

Multiplicateur M06905 (160/180)

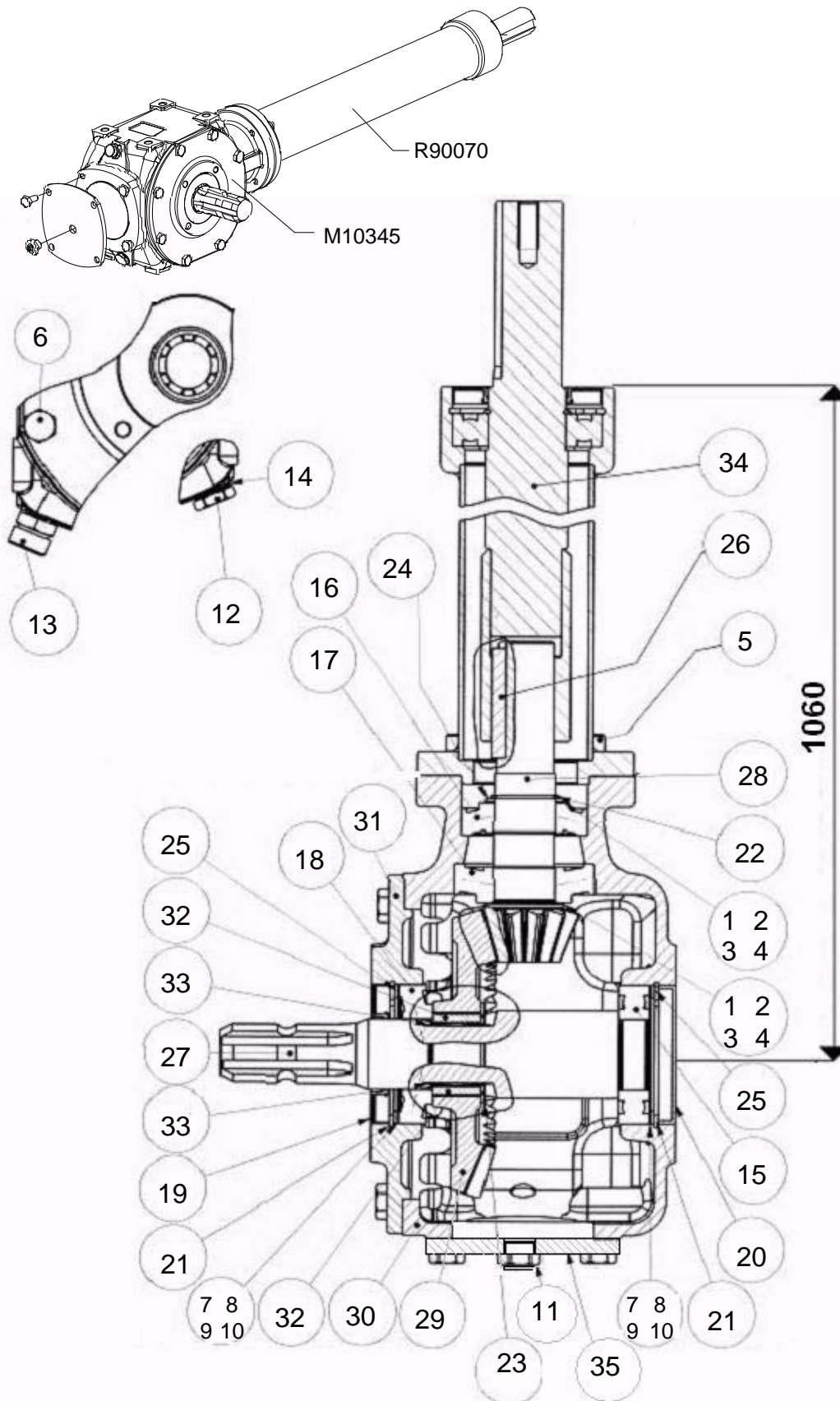
Übersetzen M06905 (160/180)

Drawing Code: **100455\_0\_f2**

Accessories:

N°	Code	Old.	Descrizione /Description
1	M20A00030	C21123	CUSCINETTO 6209 45X85X19
2	H00A00102	C10132	PARAOLIO BASL D.45X85X10
3	MA0A00011	C04036	SEEGER FORO D.85 UNI 7437
4	MA0A00049	C04162	SEEGER ALBERO D.45 UNI 7435
8	M65A00157	R90041	PROLUNGA COMPL. 780 CH M12 R241

GB	FR	D	E
BEARING	ROULEMENT	KUGELLAGER	COJINETE
SEALING RING	JOINT SPI	OELABDICHTUNG	PARAOLIO
SEEGER	SEEGER	SEEGER	SEEGER
SEEGER	SEEGER	SEEGER	SEEGER
EXTENSION	EXTENSION	VERLAENGERUNG	EXTENSIÓN



100504\_00\_f1



# Moltiplicatore M06911

Overgear M06911

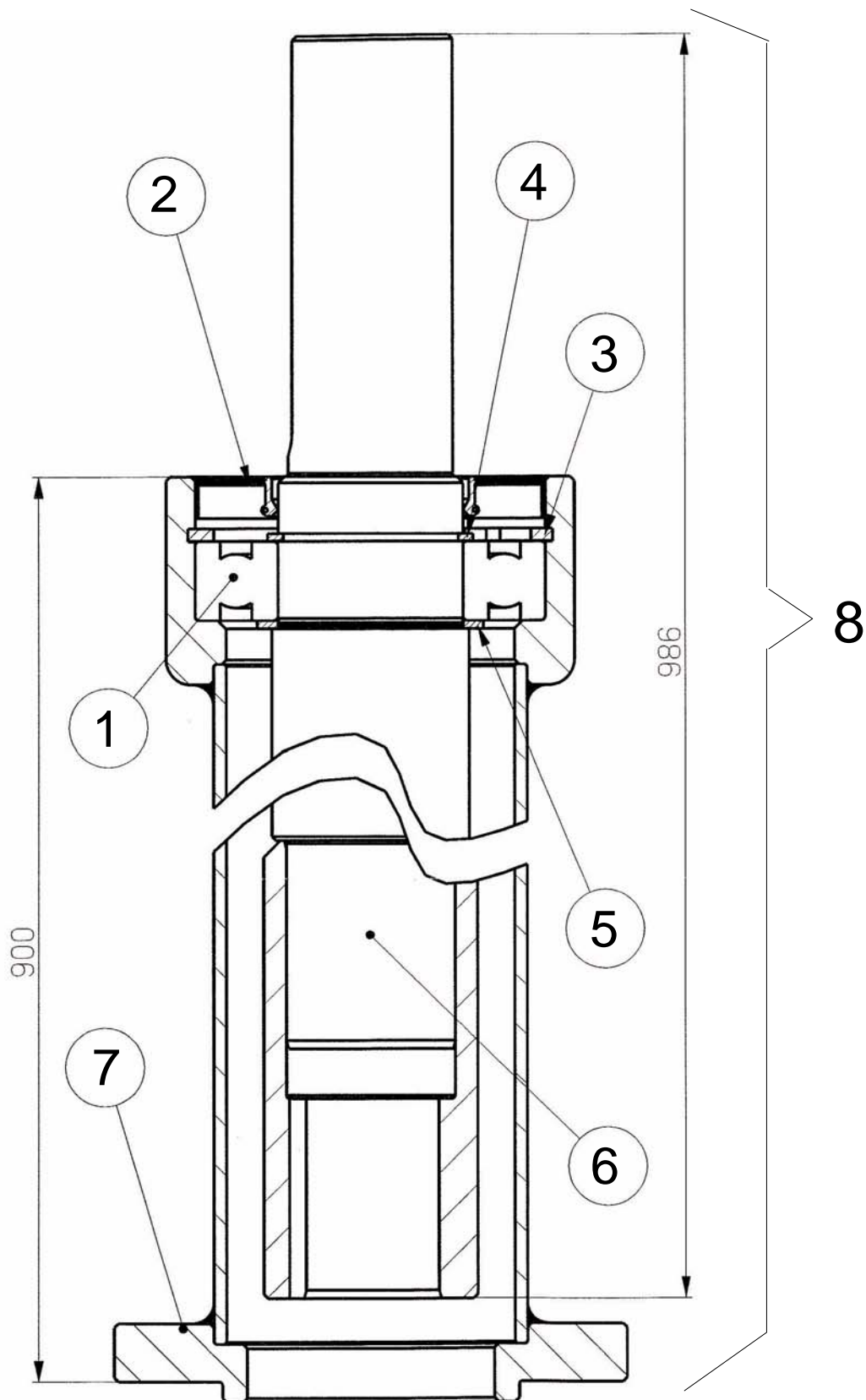
Multiplicateur M06911

Übersetzen M06911

Drawing Code: **100504\_0\_f1**

Accessories:

N°	Code	Old.	Descrizione /Description	GB	FR	D	E
1	MA5A00053	C04255	SPESSORE REG. 35X45X0,20	THICKNESS	CALES	DICKE	ESPESOR
2	MA5A00046	C04246	SPESSORE REG. 105.5X119.5X0,5	THICKNESS	CALES	DICKE	ESPESOR
3	MA5A00055	C04257	SPESSORE REG. 35X45X0,35	THICKNESS	CALES	DICKE	ESPESOR
4	MA5A00056	C04258	SPESSORE REG. 35X45X0,50	THICKNESS	CALES	DICKE	ESPESOR
5	M80A00244	C00431	VITE TCEI PG M10X30 ZINC UNI 5931	SCREW	VIS	SCHRAUBE	TORNILLO
6	M80A00118	C00131	VITE TE 88 PG FT M10X25 ZINC UNI 5739	SCREW	VIS	SCHRAUBE	TORNILLO
7	MA5A00025	C04225	SPESSORE REG. 65,3X79,7X0,2	THICKNESS	CALES	DICKE	ESPESOR
8	MA5A00026	C04226	SPESSORE REG. 65,3X79,7X0,25	THICKNESS	CALES	DICKE	ESPESOR
9	MA5A00107	C04333	SPESSORE REG. 65,3X79,7X0,35	THICKNESS	CALES	DICKE	ESPESOR
10	MA5A00027	C04227	SPESSORE REG. 65,3X79,7X0,3	THICKNESS	CALES	DICKE	ESPESOR
11	H60A00004	C41315	SPIA LIVELLO OLIO 16X1,5 (38A)	LIGHT	LUMIERE	WARNLAMPE	INDICADOR
12	H45A00016	C41225	TAPPO M16X1,5 (32.A)	PLUG	BOUCHON	STOEPSSEL	ENCHUFE
13	H65A00002	C41230	TAPPO SFIATO M16X1,5 (30.A) LABIRINTO	PLUG	BOUCHON	STOEPSSEL	ENCHUFE
14	H35A00042	C40382	RONDELLA RAME 3/8 D.17	WASHER	RONDELLE	UNTERLEGSCHIEBE	ARANDELLA
15	M20A00028	C21120	CUSCINETTO 6208 40x80x18	BEARING	ROULEMENT	KUGELLAGER	COJINETE
16	M20A00059	C21407	CUSCINETTO 30207 35X72X18,25 J2	BEARING	ROULEMENT	KUGELLAGER	COJINETE
17	M20A00087	C21707	CUSCINETTO 30307 35X80X22,75	BEARING	ROULEMENT	KUGELLAGER	COJINETE
18	M20A00060	C21408	CUSCINETTO 30208 40X80X19,75	BEARING	ROULEMENT	KUGELLAGER	COJINETE
19	H00A00101	C10123	PARAOLIO BASL D.40X80X10	SEALING RING	JOINT SPI	OELABDICHTUNG	PARAOLIO
20	H00A00087	C10321	CAPPELOTTO D.80X10	PLASTIC GUARD	BACHE	KUNSTSTOFF-DECKEL	SOMBRERETE
21	MA0A00010	C04035	SEEGER FORO D.80 UNI 7437	SEEGER	SEEGER	SEEGER	SEEGER
22	MA0A00036	C04138	SEEGER ALBERO D.35 UNI 7435	SEEGER	SEEGER	SEEGER	SEEGER
23	MA0A00043	C04143	SEEGER ALBERO d.48 UNI 7435	SEEGER	SEEGER	SEEGER	SEEGER
24	MA5A00057	C04259	SPESSORE REG. 35.2X45X2	THICKNESS	CALES	DICKE	ESPESOR
25	MA5A00073	C04274	RALLA REG. 65X79X2	FIFTH WHEEL	RONDELLE	DREHPLATTE	RAYA
26	MC0A00021		LINGUETTA 10X8X63 UNI6604A	TONGUE	CLAVETTE	ZUNGE	LENGUA
27	M45A00124	R90036	"ALBERO P.T.O 1" 3/8 Z6 PER RUOTA LIBERA"	SHAFT	ARBRE	WELLE	EJE
28	M40A00145	R90038	PIGNONE CONICO Z=12 M=4.45 RS24	PINION	PIGNON	RITZEL	PIÑON
29	M40A00144	R90037	CORONA CONICA RUOTA LIBERA Z=37 M=4.45	CROWN	COURONNE	KRONE	CORONA
30	C15A01019	R90039	SCATOLA RIDUTTORE RS24	BOX	BOITE	SCHACTEL	RECUADRO
31	M35A00084	R90040	COPERCHIO FRONTALE P.T.O RS24	LID	COUVERCLE	DECKEL	TAPA
32	M75A00143	R90020	KIT NOTTOLINO L=28 + MOLLA RUOTA LIBERA TL30-TL32	KIT	KIT	KIT	KIT
33	MF5A00085	R90021	MOLLA PER RUOTA LIBERA TL30-TL32	SPRING	RESSORT	FEDER	MUELLE
34	M65A00166	R90070	PROLUNGA COMPLETA L=900/1060 R241	EXTENSION	EXTENSION	VERLAENGERUNG	EXTENSIÓN
35	C15A01017	R90024	COPERCHIO POSTERIORE SCATOLA R240	LID	COUVERCLE	DECKEL	TAPA
M10345	M65A00112	M10345	MOLTIPLICATORE TESTA RS24 1 P.D.F	MULTIPLIER	MULTIPLICATEUR	UEBERSETZUNGSGETRIEBE	MULTIPLICADOR
R90070	M65A00166	R90070	PROLUNGA COMPLETA L=900/1060 R241	EXTENSION	EXTENSION	VERLAENGERUNG	EXTENSIÓN



100504\_00\_f2





## Prolunga moltiplicatore M06911

Overgear M06911

Multiplicateur M06911

Übersetzen M06911

Drawing Code: **100504\_0\_f2**

Accessories:

N°	Code	Old.	Descrizione /Description
1	M20A00030	C21123	CUSCINETTO 6209 45X85X19
2	H00A00102	C10132	PARAOLIO BASL D.45X85X10
3	MA0A00011	C04036	SEEGER FORO D.85 UNI 7437
4	MA0A00049	C04162	SEEGER ALBERO D.45 UNI 7435
8	M65A00166	R90070	PROLUNGA COMPLETA L=900/1060 R241

GB	FR	D	E
BEARING	ROULEMENT	KUGELLAGER	COJINETE
SEALING RING	JOINT SPI	OELABDICHTUNG	PARAOLIO
SEEGER	SEEGER	SEEGER	SEEGER
SEEGER	SEEGER	SEEGER	SEEGER
EXTENSION	EXTENSION	VERLAENGERUNG	EXTENSIÓN

**Moltiplicatore M06912 (280)**

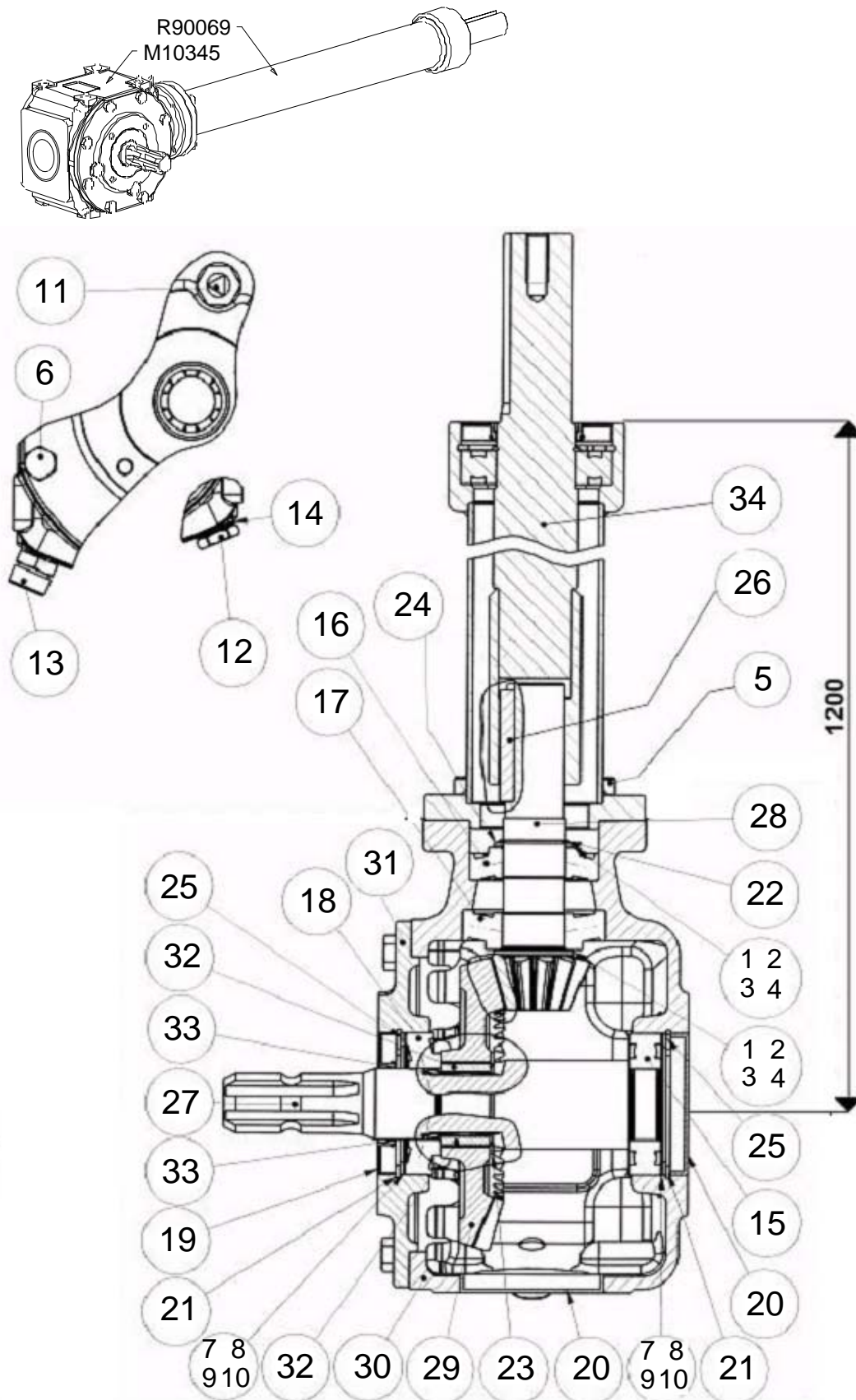
Overgear M06912 (280)

Multiplicateur M06912 (280)

Übersetzen M06912 (280)

Drawing Code: **100623\_0\_f1**

Accessories:



100623\_00\_f1



## Moltiplicatore M06912 (280)

Overgear M06912 (280)

Multiplicateur M06912 (280)

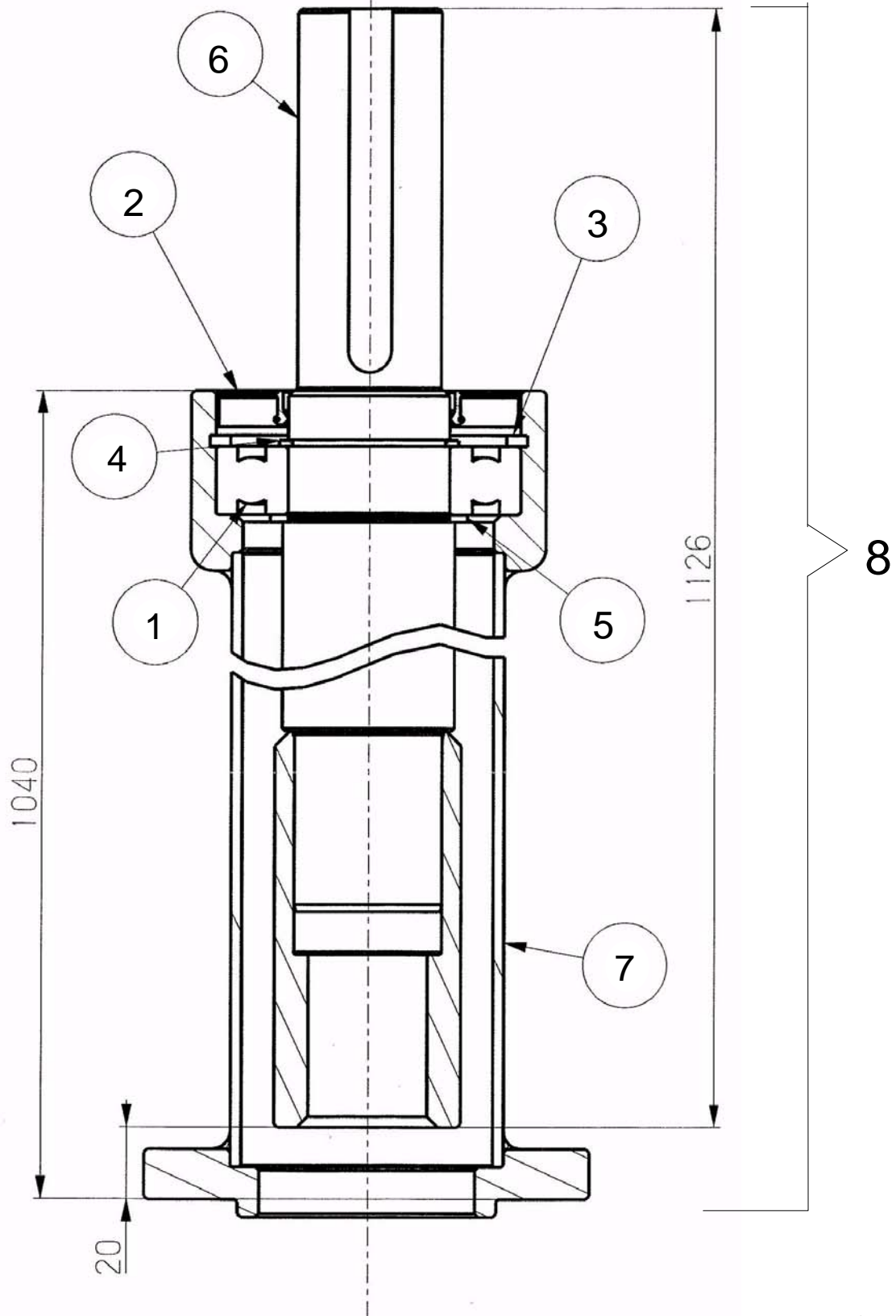
Übersetzen M06912 (280)

Drawing Code: **100623\_0\_f1**

Accessories:

N°	Code	Old.	Descrizione /Description
12	H45A00016	C41225	TAPPO M16X1,5 (32.A)
13	H65A00002	C41230	TAPPO SFIATO M16X1,5 (30.A) LABIRINTO
19	H00A00101	C10123	PARAOILIO BASL D.40X80X10
27	M45A00124	R90036	"ALBERO P.T.O 1" 3/8 Z6 PER RUOTA LIBERA"
28	M40A00145	R90038	PIGNONE CONICO Z=12 M=4.45 RS24
29	M40A00144	R90037	CORONA CONICA RUOTA LIBERA Z=37 M=4.45
30	C15A01019	R90039	SCATOLA RIDUTTORE RS24
31	M35A00084	R90040	COPERCHIO FRONTALE P.T.O RS24
32	M75A00143	R90020	KIT NOTTOLINO L=28 + MOLLA RUOTA LIBERA TL30-TL32
33	MF5A00085	R90021	MOLLA PER RUOTA LIBERA TL30-TL32
34	M65A00165	R90069	PROLUNGA COMPLETA L=1040/1200 R241
35	M65A00112	M10345	MOLTIPLICATORE TESTA RS24 1 P.D.F
#	M65A00112	M10345	MOLTIPLICATORE TESTA RS24 1 P.D.F
#	M65A00165	R90069	PROLUNGA COMPLETA L=1040/1200 R241

GB	FR	D	E
PLUG	BOUCHON	STOEPSSEL	ENCHUFE
PLUG	BOUCHON	STOEPSSEL	ENCHUFE
SEALING RING	JOINT SPI	OELABDICHTUNG	PARAOILIO
SHAFT	ARBRE	WELLE	EJE
PINION	PIGNON	RITZEL	PIÑON
CROWN	COURONNE	KRONE	CORONA
BOX	BOITE	SCHACTEL	RECUADRO
LID	COUVERCLE	DECKEL	TAPA
KIT	KIT	KIT	KIT
SPRING	RESSORT	FEDER	MUELLE
EXTENSION	EXTENSION	VERLAENGERUNG	EXTENSIÓN
MULTIPLIER	MULTIPLICATEUR	UEBERSETZUNGSGETRIEBE	MULTIPLICADOR
MULTIPLIER	MULTIPLICATEUR	UEBERSETZUNGSGETRIEBE	MULTIPLICADOR
EXTENSION	EXTENSION	VERLAENGERUNG	EXTENSIÓN



100623\_00\_f2



## Prolunga moltiplicatore M06912 (280)

Overgear M06912 (280)

Multiplicateur M06912 (280)

Übersetzen M06912 (280)

Drawing Code: **100623\_0\_f2**

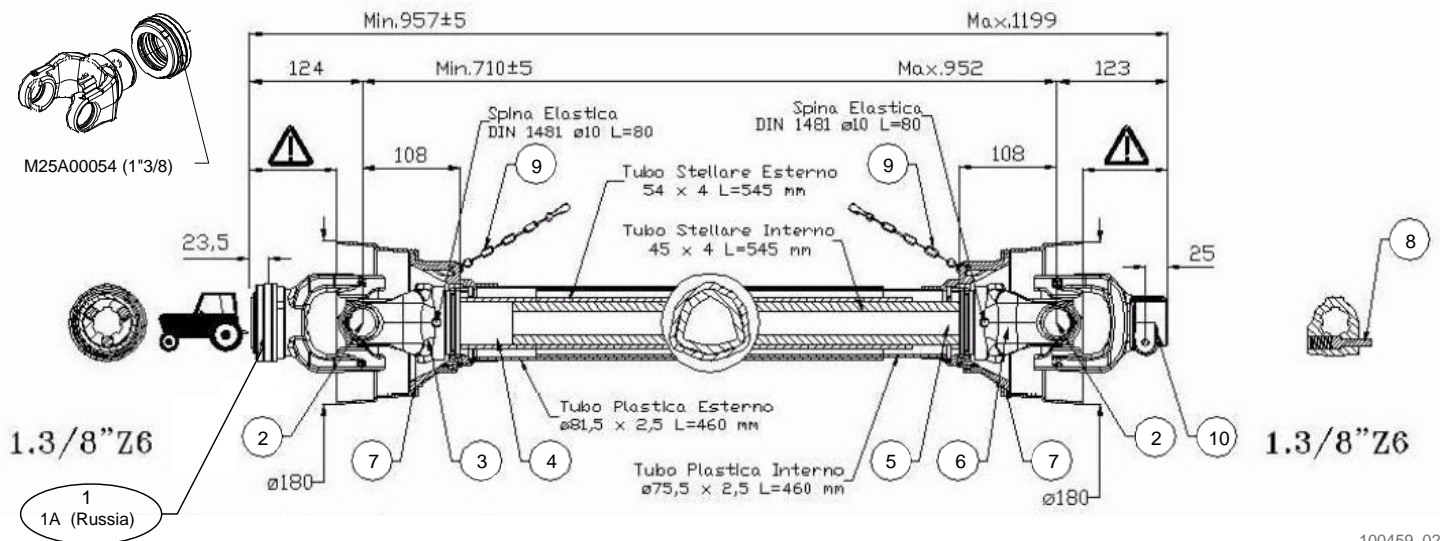
Accessories:

N°	Code	Old.	Descrizione /Description
1	M20A00030	C21123	CUSCINETTO 6209 45X85X19
2	H00A00102	C10132	PARAOLIO BASL D.45X85X10
3	MA0A00011	C04036	SEEGER FORO D.85 UNI 7437
4	MA0A00049	C04162	SEEGER ALBERO D.45 UNI 7435
8	M65A00165	R90069	PROLUNGA COMPLETA L=1040/1200 R241

GB	FR	D	E
BEARING	ROULEMENT	KUGELLAGER	COJINETE
SEALING RING	JOINT SPI	OELABDICHTUNG	PARAOLIO
SEEGER	SEEGER	SEEGER	SEEGER
SEEGER	SEEGER	SEEGER	SEEGER
EXTENSION	EXTENSION	VERLAENGERUNG	EXTENSIÓN

Codice cardano  
Code pto shaft  
Code de arbre de transmission  
Code gelenkwelle

**M06951**



100459\_02





**Cardano M06951**  
 PTO shaft M06951  
 Arbre de transmission M06951  
 Gelenkwelle M06951

Drawing Code: **100459\_2**

Accessories:

N°	Code	Old.	Descrizione /Description
1	M72A00066	R50127	"FORCELLA RAPIDO COLLAR 1""3/8 B06"
1A	M72A00074	R50139	FORCELLA 6 D8X32X38 (RUSSIA)
2	M71A00006	R50120	CROCIERA D30.2x92 SERIE L (B06)
3	M72A00064	R50123	FORCELLA EST. TUBO TRIANG 54x4 B06
4	M73A00042	R50122	TUBO TRIANGOLARE EST. 54X4 B06 INT. B08
5	M73A00041	R50121	TUBO TRIANGOLARE INT. 45X4 B05-B06
6	M72A00065	R50124	FORCELLA INT. TUBO TRIANG 45x4 B06
7	G10A00088	R50126	PROTEZIONE COMPL.CARDANO B06X1010
8	MF0A00063	R50012	"PULSANTE COMPLETO 1""3/8"
9	MH0A00022	R50119	CATENELLA PROTEZ.CARDANO L=550
10	M72A00071	R50135	"FORCELLA 6 1"" 3/8 Z6 ATT.PULSANTE"
#	M70A00066	M06951	"CARDANO B06-071-1""3/8+1""3/8"
#	M25A00054		"COLLARE ATTACCO RAPIDO ACCIAIO 1"" 3/8"

GB	FR	D	E
FORK	MACHOIRE	GABEL	HORQUILLA
FORK	MACHOIRE	GABEL	HORQUILLA
CRUISE	CROISIÈRE	CRUISE	CRUISE
FORK	MACHOIRE	GABEL	HORQUILLA
TUBE	TUBE	ROHR	TUBO
TUBE	TUBE	ROHR	TUBO
FORK	MACHOIRE	GABEL	HORQUILLA
PROTECTION	PROTECTION	SCHUTZ	PROTECCIÓN
BUTTON	BOUTON	BUTTON	BOTÓN
CHAIN	CHAÎNE	KETTE	CADENA
FORK	MACHOIRE	GABEL	HORQUILLA
UNIVERSAL JOINT	CARDAN	GELLENKWELLE	CARDAN
METAL RING	COLLARE	METALLRING	COLLAR