



**CATALOGO PARTI DI RICAMBIO**  
**SPARE PARTS CATALOGUE**  
**CATALOGUE PIECES RECHANGE**  
**ERSATZTEILKATALOG**

# Erpice fisso

# DD



[www.alpego.com](http://www.alpego.com)

Tel +39 0444/64.61.00

Fax +39 0444/64.61.99

e-mail: [info@alpego.com](mailto:info@alpego.com)

**ALPEGO s.p.a.**

*Sede Amministrativa:*

**Via Torri di Confine, 6 36053 GAMBELLARA (VICENZA) - ITALY**

*Sede Legale:*

**Via Giovanni e Giuseppe Cenzato, 9 36045 LONIGO (VICENZA) - ITALY**

Capitale sociale €2.000.000 i.v.

Cod. Fisc. / Part. IVA IT02009840246

R.E.A. 199795/VI/1996

Reg. Imp.VI N°22374/VI/1996

N. Mecc. VI 011754

Copyright © 2009 Alpego s.p.a. ®

Tutti i diritti sono riservati. È vietata espressamente la ristampa o l'uso non autorizzato senza permesso scritto dalla Alpego s.p.a.

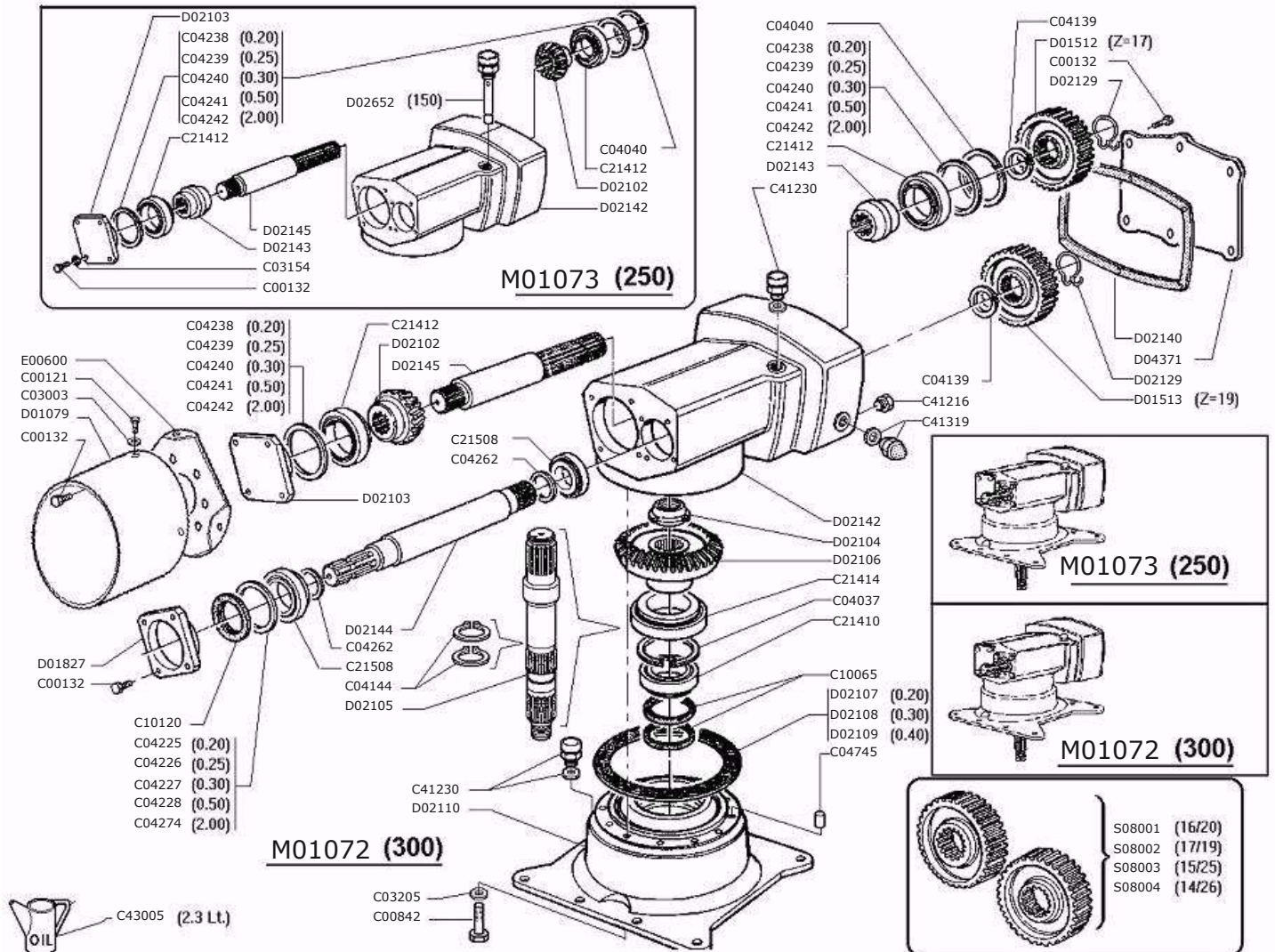
Tous droits réservés. Toute réimpression ou utilisation non autorisée sans la permission écrite de la Alpego s.p.a. est formellement interdite.

Alle Rechte vorbehalten. Nachdruck, Vervielfältigung und Verbreitung, auch auszugsweise, ist ohne schriftliche Genehmigung der Alpego s.p.a.

All rights reserved. Any reprinting or unauthorized use without the written permission of Alpego s.p.a. is expressly prohibited.

Todos los derechos reservados. Toda reproducción o uso no autorizado sin el consentimiento escrito de Alpego s.p.a. quedan expresamente prohibidos.

09/03/2015





## Gruppo cambio

Gearbox group

Groupe boite

Mehrganggetriebe

Drawing Code: **100055\_2**

Accessories:

N°	Code	Old.	Descrizione /Description	GB	FR	D	E
#	M80A00110	C00121	VITE TE 88 PG FT M8X20 ZINC UNI 5739	SCREW	VIS	SCHRAUBE	TORNILLO
#	M80A00120	C00132	VITE TE 88 PG FT M10X30 ZINC UNI 5739	SCREW	VIS	SCHRAUBE	TORNILLO
#	M80A00336	C00842	VITE TE 10.9 M12x40 UNI 5739	SCREW	VIS	SCHRAUBE	TORNILLO
#	M90A00005	C03003	RONDELLA PIANA D.8,4 DIN125-A ZINC.	WASHER	RONDELLE	UNTERLEGSSCHEIBE	ARANDELLA
#	M90A00042	C03154	RONDELLA GROWER RINF.D.10 ASA B 27	WASHER	RONDELLE	UNTERLEGSSCHEIBE	ARANDELLA
#	M90A00050	C03205	DISCO ELAST. D.12.2X25X1.5 DIN 2093	DISC	DISQUE	SCHEIBE	DISCO
#	MA0A00012	C04037	SEEGER FORO D.90 UNI 7437	SEEGER	SEEGER	SEEGER	SEEGER
#	MA0A00015	C04040	SEEGER FORO D.110 UNI 7437	SEEGER	SEEGER	SEEGER	SEEGER
#	MA0A00037	C04139	SEEGER ALBERO D.39 UNI 7435	SEEGER	SEEGER	SEEGER	SEEGER
#	MA0A00044	C04144	SEEGER ALBERO D.54 UNI 7435	SEEGER	SEEGER	SEEGER	SEEGER
#	MA5A00025	C04225	SPESSORE REG. 65,3X79,7X0,2	THICKNESS	CALES	DICKE	ESPEJOR
#	MA5A00026	C04226	SPESSORE REG. 65,3X79,7X0,25	THICKNESS	CALES	DICKE	ESPEJOR
#	MA5A00027	C04227	SPESSORE REG. 65,3X79,7X0,3	THICKNESS	CALES	DICKE	ESPEJOR
#	MA5A00028	C04228	SPESSORE REG. 65,3X79,7X0,5	THICKNESS	CALES	DICKE	ESPEJOR
#	MA5A00038	C04238	SPESSORE REG. 95.2X109.7X0,2	THICKNESS	CALES	DICKE	ESPEJOR
#	MA5A00039	C04239	SPESSORE REG. 95.2X109.7X0,25	THICKNESS	CALES	DICKE	ESPEJOR
#	MA5A00040	C04240	SPESSORE REG. 95.2X109.7X0,3	THICKNESS	CALES	DICKE	ESPEJOR
#	MA5A00041	C04241	SPESSORE REG. 95.2X109.7X0,5	THICKNESS	CALES	DICKE	ESPEJOR
#	MA5A00042	C04242	RALLA REG. 95.2X109.7X2	FIFTH WHEEL	RONDELLE	DREHPLATTE	RAYA
#	MA5A00060	C04262	SPESSORE REG. * 40,2X49,8X2	THICKNESS	CALES	DICKE	ESPEJOR
#	MA5A00073	C04274	RALLA REG. 65X79X2	FIFTH WHEEL	RONDELLE	DREHPLATTE	RAYA
#	MB0A00082	C04745	SPINA CILINDRICA D.14x20 DIN 6325	SOCKET	GOUPILLE	STECKER	PASADOR
#	H00A00031	C10065	PARAOLIO BA D.60X80X10	SEALING RING	JOINT SPI	OELABDICHTUNG	PARAOLIO
#	H00A00046	C10120	PARAOLIO BASL D.40X72X7-10	SEALING RING	JOINT SPI	OELABDICHTUNG	PARAOLIO
#	M20A00062	C21410	CUSCINETTO 30210 50X90X21,75	BEARING	ROULEMENT	KUGELLAGER	COJINETE
#	M20A00064	C21412	CUSCINETTO 30212 60X110X23,75	BEARING	ROULEMENT	KUGELLAGER	COJINETE
#	M20A00066	C21414	CUSCINETTO 30214 70X125X26,25	BEARING	ROULEMENT	KUGELLAGER	COJINETE
#	M20A00071	C21508	CUSCINETTO 32208 40X80X24,75	BEARING	ROULEMENT	KUGELLAGER	COJINETE
#	H45A00009	C41216	TAPPO CONICO M16X1,5 MAGNET.8X18 CH-17	PLUG	BOUCHON	STOEPSSEL	ENCHUFE
#	H65A00002	C41230	TAPPO SFIATO M16X1,5 (30.A) LABIRINTO	PLUG	BOUCHON	STOEPSSEL	ENCHUFE
#	H60A00006	C41319	SPIA LIVELLO GLASS M22X1.5	LIGHT	LUMIERE	WARNLAMPE	INDICADOR
#	L20A00003	C43005	OLIO CAMBIO EP-C ISO 320	OIL	HUILE	OEL	ACEITE
#	G10A00038	D01079	PROTEZIONE CARDANO D.INT.220X h 200	PROTECTION	PROTECTION	SCHUTZ	PROTECCIÓN
#	M40A00014	D01512	INGRAN. CAMBIO RD Z=17 (COPPIA 17/19)***	GEAR	ENGRENAGE	ZAHNRAEDER	ENGRANAJE
#	M40A00015	D01513	INGRAN. CAMBIO RD Z=19 (COPPIA 17/19)***	GEAR	ENGRENAGE	ZAHNRAEDER	ENGRANAJE
#	C15A00090	D01827	COPERCHIO INGRESSO LD2	LID	COUVERCLE	DECKEL	TAPA
#	M40A00026	D02102	PIGNONE CONICO Z=14 DC-DD	PINION	PIGNON	RITZEL	PIÑON
#	C15A00125	D02103	COPERCHIO PIGNONE DC	LID	COUVERCLE	DECKEL	TAPA
#	M95A00025	D02104	GHIERA CON COLLARE M40X1,5 H=18.5	METAL RING	RONDELLE	METALL-RING	RUEDA
#	M45A00016	D02105	ALBERO PORTA CORONA DC	SHAFT	ARBRE	WELLE	EJE
#	M40A00027	D02106	CORONA CONICA Z=25	CROWN	COURONNE	KRONE	CORONA
#	H30A00003	D02107	GUARNIZIONE SPESS. * 0,2 D.191XD.240	GASKET	GARNITURE	DICHTUNG	GUARNICION
#	H30A00004	D02108	GUARNIZIONE SPESS. * 0,3 D.191XD.240	GASKET	GARNITURE	DICHTUNG	GUARNICION
#	H30A00005	D02109	GUARNIZIONE SPESS. * 0,4 D.191XD.240	GASKET	GARNITURE	DICHTUNG	GUARNICION
#	C15A00126	D02110	BASAMENTO MONOVEL.DC-DF	BASE	BASE	GRUNDFLAECHE	BASE
#	MF5A00014	D02129	MOLLA DI RITEGNO LD2 D.40/45	SPRING	RESSORT	FEDER	MUELLE
#	H30A00009	D02140	GUARNIZIONE COP. POST. DD	GASKET	GARNITURE	DICHTUNG	GUARNICION
#	C15A00139	D02142	SCATOLA CAMBIO DD	BOX	BOITE	SCHACTEL	RECUADRO
#	M40A00033	D02143	FALSO PIGNONE DD	-	-	-	-

Copyright © 2009 Alpego s.p.a. ®

Tutti i diritti sono riservati. È vietata espressamente la ristampa o l'uso non autorizzato senza permesso scritto dalla Alpego s.p.a.

Tous droits réservés. Toute réimpression ou utilisation non autorisée sans la permission écrite de la Alpego s.p.a. est formellement interdite

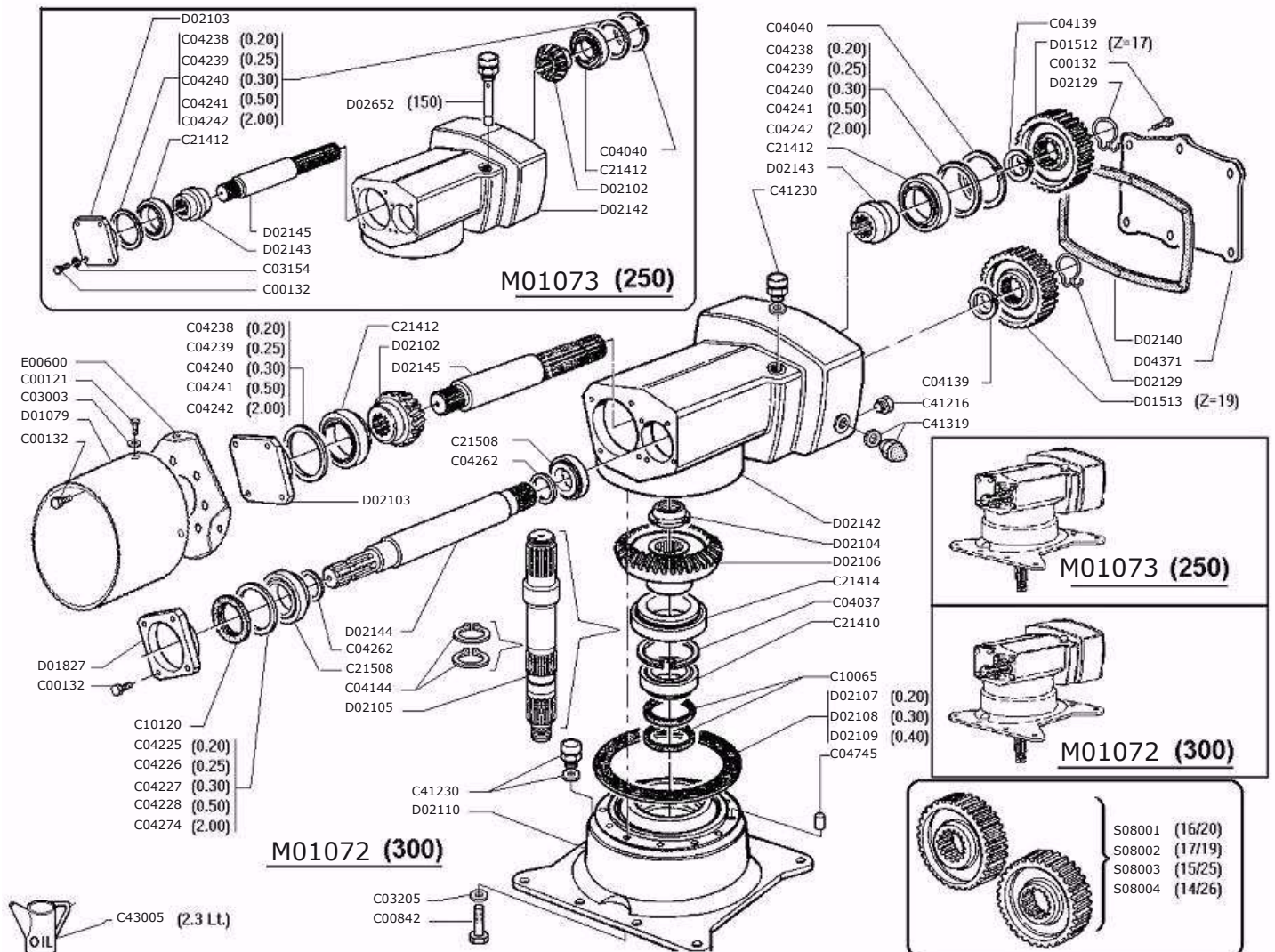
Alle Rechte vorbehalten. Nachdruck, Vervielfältigung und Verbreitung, auch auszugsweise, ist ohne schriftliche Genehmigung der Alpego s.p.a.

All rights reserved. Any reprinting or unauthorized use without the written permission of Alpego s.p.a. is expressly prohibited

Todos los derechos reservados. Toda reproducción o uso no autorizado sin el consentimiento escrito de Alpego s.p.a. quedan expresamente prohibidos

09/03/2015







## Gruppo cambio

Gearbox group

Groupe boite

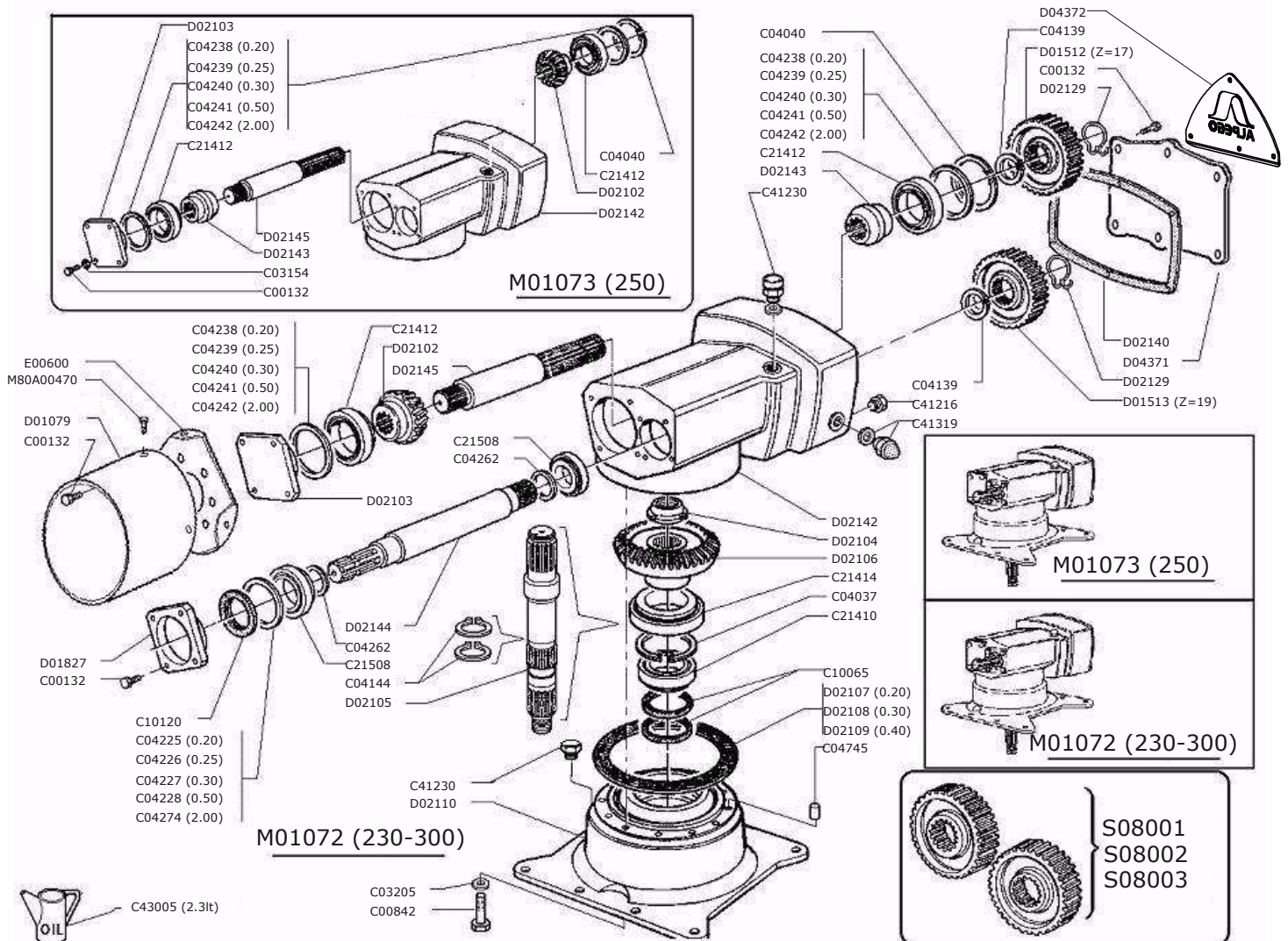
Mehrganggetriebe

Drawing Code:

**100055\_2**

Accessories:

N°	Code	Old.	Descrizione / Description	GB	FR	D	E
#	M45A00021	D02144	ALBERO INGRESSO DD	SHAFT	ARBRE	WELLE	EJE
#	M45A00022	D02145	ALBERO PIGNONE DD	SHAFT	ARBRE	WELLE	EJE
#	H65A00010	D02652	TAPPO SFIATO M16X1.5 ASTA LIV. L.150	PLUG	BOUCHON	STOEPSEL	ENCHUFE
#	C05A04454	D04371	COPERCHIO POST. CAMBIO DD/RD 10MM	LID	COUVERCLE	DECKEL	TAPA
#	C20A00034	E00600	FONDELLO PROTEZIONE COMPLETO	BOTTOM	FOND	BODEN	FONDO
#	M65A00003	M01072	GRUPPO CAMBIO DD DX (300) -KS9-	ASSEMBLY OVERVIEWGROUPE		EINHEIT-UEBERBLICK GRUPO	
#	M65A00005	M01073	GRUPPO CAMBIO DD SX (250)-KS9-	ASSEMBLY OVERVIEWGROUPE		EINHEIT-UEBERBLICK GRUPO	
#	SA0A00008	S08001	COPPIA INGRANAGGI Z 16/20 LD-DD	PAIR	PAIRE	PAAR	PAREJA/PAR
#	SA0A00009	S08002	COPPIA INGRANAGGI Z 17/19 LD-DD	PAIR	PAIRE	PAAR	PAREJA/PAR
#	SA0A00010	S08003	COPPIA INGRANAGGI Z 15/25 LD-DD	PAIR	PAIRE	PAAR	PAREJA/PAR
#	SA0A00011	S08004	COPPIA INGRANAGGI Z 14/26 LD-DD	PAIR	PAIRE	PAAR	PAREJA/PAR







## Gruppo cambio

Gearbox group

Groupe boite

Mehrganggetriebe

Drawing Code: **100055\_3**

Accessories:

N°	Code	Old.	Descrizione / Description	GB	FR	D	E
#	M80A00120	C00132	VITE TE 88 PG FT M10X30 ZINC UNI 5739	SCREW	VIS	SCHRAUBE	TORNILLO
#	M80A00336	C00842	VITE TE 10.9 M12x40 UNI 5739	SCREW	VIS	SCHRAUBE	TORNILLO
#	M90A00042	C03154	RONDELLA GROWER RINF.D.10 ASA B 27	WASHER	RONDELLE	UNTERLEGSSCHEIBE	ARANDELLA
#	M90A00050	C03205	DISCO ELAST. D.12.2X25X1.5 DIN 2093	DISC	DISQUE	SCHEIBE	DISCO
#	MA0A00012	C04037	SEEGER FORO D.90 UNI 7437	SEEGER	SEEGER	SEEGER	SEEGER
#	MA0A00015	C04040	SEEGER FORO D.110 UNI 7437	SEEGER	SEEGER	SEEGER	SEEGER
#	MA0A00037	C04139	SEEGER ALBERO D.39 UNI 7435	SEEGER	SEEGER	SEEGER	SEEGER
#	MA0A00044	C04144	SEEGER ALBERO D.54 UNI 7435	SEEGER	SEEGER	SEEGER	SEEGER
#	MA5A00025	C04225	SPESSORE REG. 65,3X79,7X0,2	THICKNESS	CALES	DICKE	ESPESOR
#	MA5A00026	C04226	SPESSORE REG. 65,3X79,7X0,25	THICKNESS	CALES	DICKE	ESPESOR
#	MA5A00027	C04227	SPESSORE REG. 65,3X79,7X0,3	THICKNESS	CALES	DICKE	ESPESOR
#	MA5A00028	C04228	SPESSORE REG. 65,3X79,7X0,5	THICKNESS	CALES	DICKE	ESPESOR
#	MA5A00038	C04238	SPESSORE REG. 95.2X109.7X0,2	THICKNESS	CALES	DICKE	ESPESOR
#	MA5A00039	C04239	SPESSORE REG. 95.2X109.7X0,25	THICKNESS	CALES	DICKE	ESPESOR
#	MA5A00040	C04240	SPESSORE REG. 95.2X109.7X0,3	THICKNESS	CALES	DICKE	ESPESOR
#	MA5A00041	C04241	SPESSORE REG. 95.2X109.7X0,5	THICKNESS	CALES	DICKE	ESPESOR
#	MA5A00042	C04242	RALLA REG. 95.2X109.7X2	FIFTH WHEEL	RONDELLE	DREHPLATTE	RAYA
#	MA5A00060	C04262	SPESSORE REG. * 40,2X49,8X2	THICKNESS	CALES	DICKE	ESPESOR
#	MA5A00073	C04274	RALLA REG. 65X79X2	FIFTH WHEEL	RONDELLE	DREHPLATTE	RAYA
#	MB0A00082	C04745	SPINA CILINDRICA D.14x20 DIN 6325	SOCKET	GOUPILLE	STECKER	PASADOR
#	H00A00031	C10065	PARAOLIO BA D.60X80X10	SEALING RING	JOINT SPI	OELABDICHTUNG	PARAOLIO
#	H00A00046	C10120	PARAOLIO BASL D.40X72X7-10	SEALING RING	JOINT SPI	OELABDICHTUNG	PARAOLIO
#	M20A00062	C21410	CUSCINETTO 30210 50X90X21,75	BEARING	ROULEMENT	KUGELLAGER	COJINETE
#	M20A00064	C21412	CUSCINETTO 30212 60X110X23,75	BEARING	ROULEMENT	KUGELLAGER	COJINETE
#	M20A00066	C21414	CUSCINETTO 30214 70X125X26,25	BEARING	ROULEMENT	KUGELLAGER	COJINETE
#	M20A00071	C21508	CUSCINETTO 32208 40X80X24,75	BEARING	ROULEMENT	KUGELLAGER	COJINETE
#	H45A00009	C41216	TAPPO CONICO M16X1,5 MAGNET.8X18 CH-17	PLUG	BOUCHON	STOEPSSEL	ENCHUFE
#	H65A00002	C41230	TAPPO SFIATO M16X1,5 (30.A) LABIRINTO	PLUG	BOUCHON	STOEPSSEL	ENCHUFE
#	H60A00006	C41319	SPIA LIVELLO GLASS M22X1.5	LIGHT	LUMIERE	WARNLAMPE	INDICADOR
#	L20A00003	C43005	OLIO CAMBIO EP-C ISO 320	OIL	HUILE	OEL	ACEITE
#	G10A00038	D01079	PROTEZIONE CARDANO D.INT.220X h 200	PROTECTION	PROTECTION	SCHUTZ	PROTECCIÓN
#	M40A00014	D01512	INGRAN. CAMBIO RD Z=17 (COPPIA 17/19)***	GEAR	ENGRENAGE	ZAHNRAEDER	ENGRANAJE
#	M40A00015	D01513	INGRAN. CAMBIO RD Z=19 (COPPIA 17/19)***	GEAR	ENGRENAGE	ZAHNRAEDER	ENGRANAJE
#	C15A00090	D01827	COPERCHIO INGRESSO LD2	LID	COUVERCLE	DECKEL	TAPA
#	M40A00026	D02102	PIGNONE CONICO Z=14 DC-DD	PINION	PIGNON	RITZEL	PIÑON
#	C15A00125	D02103	COPERCHIO PIGNONE DC	LID	COUVERCLE	DECKEL	TAPA
#	M95A00025	D02104	GHIERA CON COLLARE M40X1,5 H=18.5	METAL RING	RONDELLE	METALL-RING	RUEDA
#	M45A00016	D02105	ALBERO PORTA CORONA DC	SHAFT	ARBRE	WELLE	EJE
#	M40A00027	D02106	CORONA CONICA Z=25	CROWN	COURONNE	KRONE	CORONA
#	H30A00003	D02107	GUARNIZIONE SPESS. * 0,2 D.191XD.240	GASKET	GARNITURE	DICHTUNG	GUARNICION
#	H30A00004	D02108	GUARNIZIONE SPESS. * 0,3 D.191XD.240	GASKET	GARNITURE	DICHTUNG	GUARNICION
#	H30A00005	D02109	GUARNIZIONE SPESS. * 0,4 D.191XD.240	GASKET	GARNITURE	DICHTUNG	GUARNICION
#	C15A00126	D02110	BASAMENTO MONOVEL.DC-DF	BASE	BASE	GRUNDFLAECHE	BASE
#	MF5A00014	D02129	MOLLA DI RITEGNO LD2 D.40/45	SPRING	RESSORT	FEDER	MUELLE
#	H30A00009	D02140	GUARNIZIONE COP. POST. DD	GASKET	GARNITURE	DICHTUNG	GUARNICION
#	C15A00139	D02142	SCATOLA CAMBIO DD	BOX	BOITE	SCHACTEL	RECUADRO
#	M40A00033	D02143	FALSO PIGNONE DD	-	-	-	-
#	M45A00021	D02144	ALBERO INGRESSO DD	SHAFT	ARBRE	WELLE	EJE
#	M45A00022	D02145	ALBERO PIGNONE DD	SHAFT	ARBRE	WELLE	EJE

Copyright © 2009 Alpego s.p.a. ®

Tutti i diritti sono riservati. È vietata espressamente la ristampa o l'uso non autorizzato senza permesso scritto dalla Alpego s.p.a.

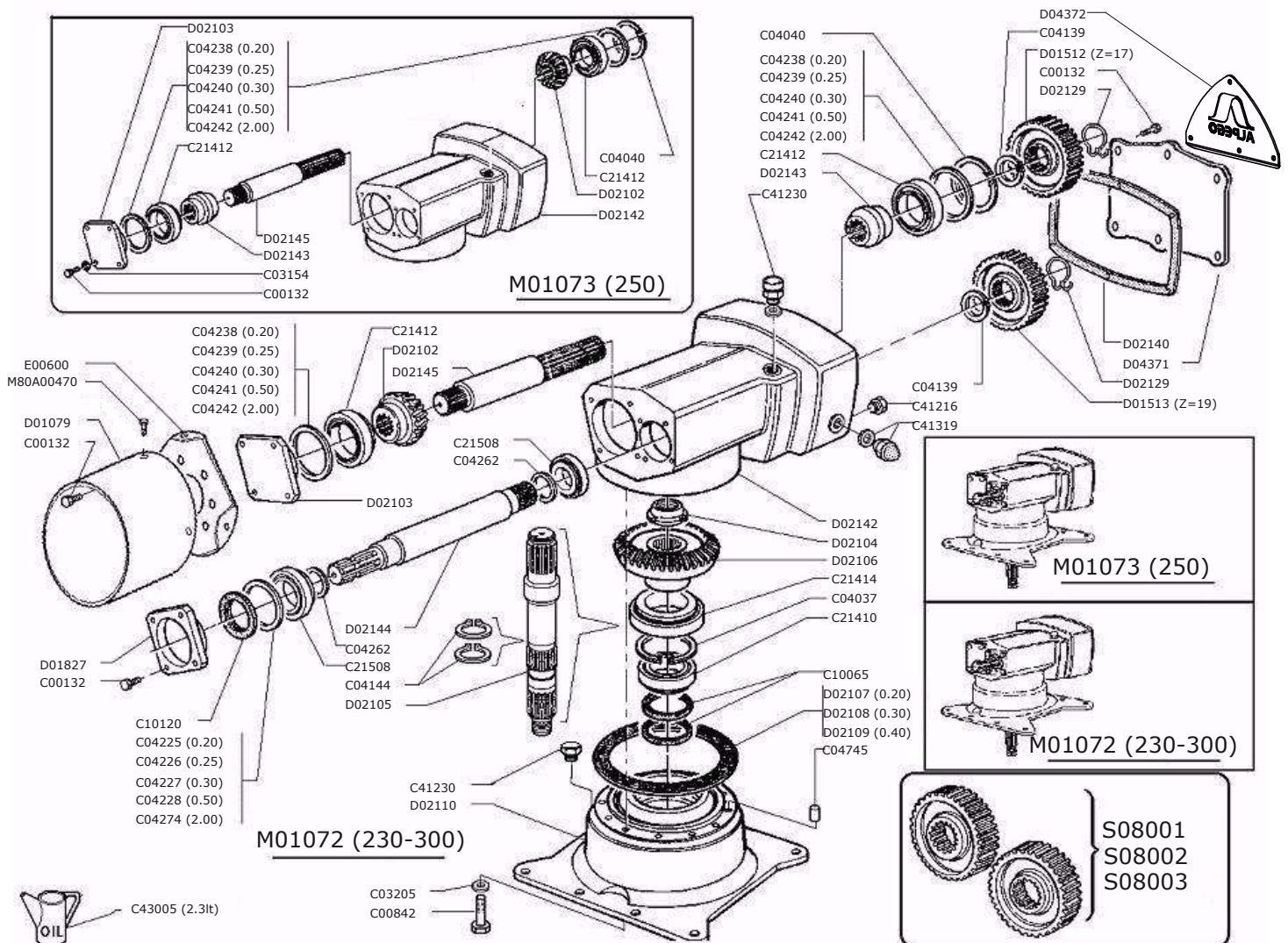
Tous droits réservés. Toute réimpression ou utilisation non autorisée sans la permission écrite de la Alpego s.p.a. est formellement interdite

Alle Rechte vorbehalten. Nachdruck, Vervielfältigung und Verbreitung, auch auszugsweise, ist ohne schriftliche Genehmigung der Alpego s.p.a.

Al rights reserved. Any reprinting or unauthorized use without the written permission of Alpego s.p.a. is expressly prohibited

Todos los derechos reservados. Toda reproducción o uso no autorizado sin el consentimiento escrito de Alpego s.p.a. quedan expresamente prohibidos

09/03/2015







## Gruppo cambio

Gearbox group

Groupe boite

Mehrganggetriebe

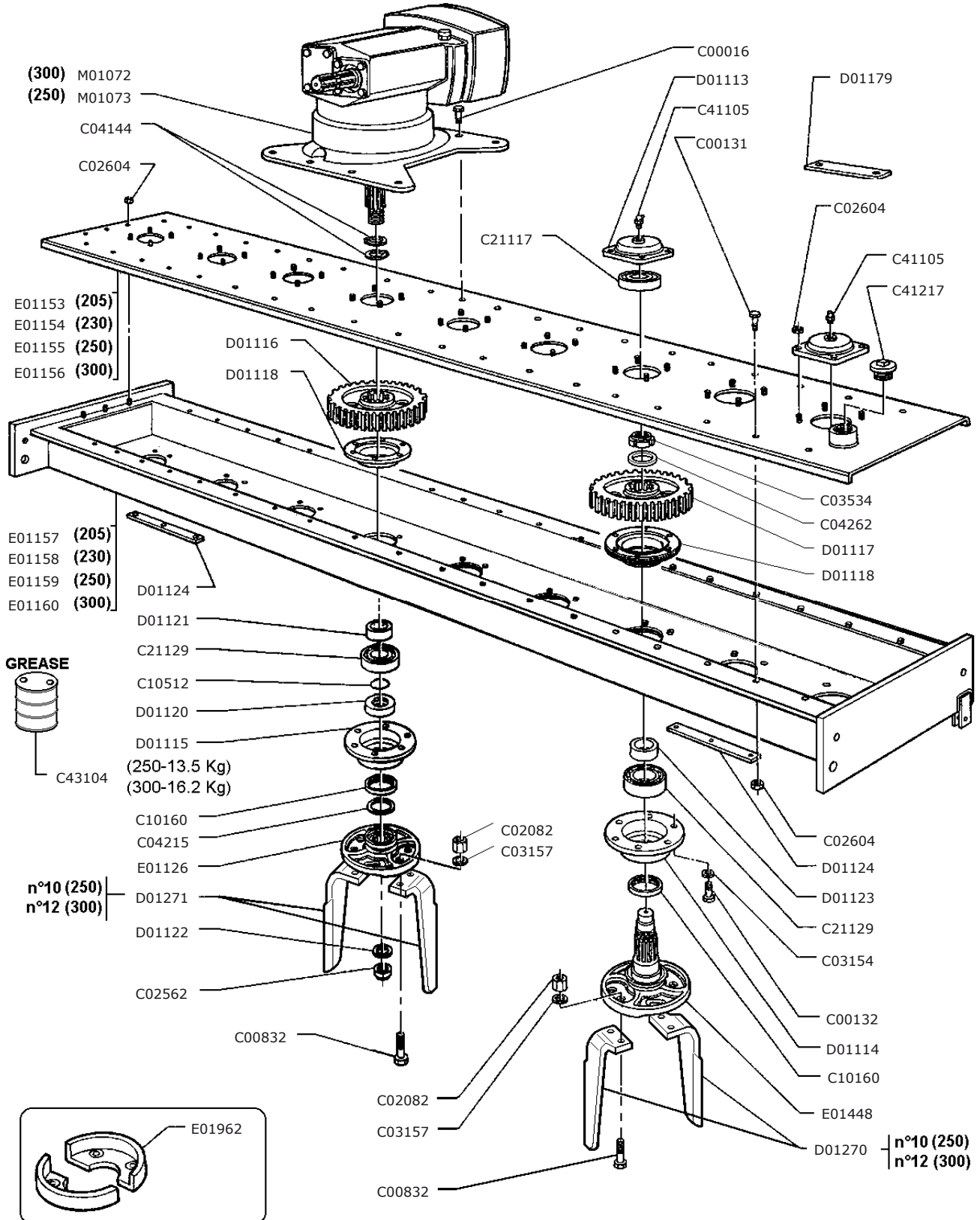
Drawing Code:

**100055\_3**

Accessories:

N°	Code	Old.	Descrizione / Description
#	C05A04454	D04371	COPERCHIO POST. CAMBIO DD/RD 10MM
#	C10A01435	D04372	TARGA COP. POST. CAMBIO DD/RD 4MM
#	C20A00034	E00600	FONDELLO PROTEZIONE COMPLETO
#	M65A00003	M01072	GRUPPO CAMBIO DD DX (300) -KS9-
#	M65A00005	M01073	GRUPPO CAMBIO DD SX (250)-KS9-
#	M80A00470		VITE TE FLANG. 8.8 PG FT M8X20 ZINC UNI 1665
#	SA0A00008	S08001	COPPIA INGRANAGGI Z 16/20 LD-DD
#	SA0A00009	S08002	COPPIA INGRANAGGI Z 17/19 LD-DD
#	SA0A00010	S08003	COPPIA INGRANAGGI Z 15/25 LD-DD

GB	FR	D	E
LID	COUVERCLE	DECKEL	TAPA
PLATE	PLAQUE	SCHILD	TARGA
BOTTOM	FOND	BODEN	FONDO
ASSEMBLY OVERVIEWGRUPE		EINHEIT-UEBERBLICK GRUPO	
ASSEMBLY OVERVIEWGRUPE		EINHEIT-UEBERBLICK GRUPO	
SCREW	VIS	SCHRAUBE	TORNILLO
PAIR	PAIRE	PAAR	PAREJA/PAR
PAIR	PAIRE	PAAR	PAREJA/PAR
PAIR	PAIRE	PAAR	PAREJA/PAR





## Vasca trasmissione

Tank transmission

Transmission cuve

Gehaeuse antrieb

Drawing Code: **100056\_1**

Accessories:

N°	Code	Old.	Descrizione / Description	GB	FR	D	E
#	M80A00013	C00016	VITE TE 88 PG FP M10X45 ZINC UNI 5737	SCREW	VIS	SCHRAUBE	TORNILLO
#	M80A00118	C00131	VITE TE 88 PG FT M10X25 ZINC UNI 5739	SCREW	VIS	SCHRAUBE	TORNILLO
#	M80A00120	C00132	VITE TE 88 PG FT M10X30 ZINC UNI 5739	SCREW	VIS	SCHRAUBE	TORNILLO
#	M80A00325	C00832	VITE TE 12.9 M16X1,5X50 F25/28 (T.TONDA) ZINCO-LAMELLARE	SCREW	VIS	SCHRAUBE	TORNILLO
#	M85A00022	C02082	DADO ALTO 10 PF M16X1,5 5587 ZINCO-LAMELLARE	NUT	BOULONS	NUT	DADO
#	M85A00070	C02562	DADO AUTOBLOC BASSO 8 PF M30X2 H=23 UNI 7474	NUT	BOULONS	NUT	DADO
#	M85A00077	C02604	DADO AUTOBLOC ALTO 8 M10 H=11.5 UNI 7473	NUT	BOULONS	NUT	DADO
#	M90A00042	C03154	RONDELLA GROWER RINF.D.10 ASA B 27	WASHER	RONDELLE	UNTERLEGSSCHEIBE	ARANDELLA
#	M90A00048	C03157	RONDELLA GROWER RINF. D.16 ASA B27 ZINCO-LAMELLARE	WASHER	RONDELLE	UNTERLEGSSCHEIBE	ARANDELLA
#	M95A00012	C03534	GHIERA AUTOBLOC.ALTA GUP M40X1,5	METAL RING	RONDELLE	METALL-RING	RUEDA
#	MA0A00044	C04144	SEEGER ALBERO D.54 UNI 7435	SEEGER	SEEGER	SEEGER	SEEGER
#	MA5A00014	C04215	SPESSORE REG. 45X55X1	THICKNESS	CALES	DICKE	ESPESOR
#	MA5A00060	C04262	SPESSORE REG. * 40,2X49,8X2	THICKNESS	CALES	DICKE	ESPESOR
#	H00A00067	C10160	PARAOILIO BASL D.58X72X10	SEALING RING	JOINT SPI	OELABDICHTUNG	PARAOILIO
#	H05A00015	C10512	ANELLO OR 149 D.INT.44.45X3,53	RING	AMORTISSEUR	RING	ANILLO
#	M20A00025	C21117	CUSCINETTO 6207 ZC3 35X72X17	BEARING	ROULEMENT	KUGELLAGER	COJINETE
#	M20A00036	C21129	CUSCINETTO 6210 C3 50X90X20	BEARING	ROULEMENT	KUGELLAGER	COJINETE
#	MJ5A00005	C41105	INGRASSATORE M10X1 DIRITTO	GREASE NIPPLE	GRAISSOR	FETTBUCHSE	ENGRASADOR
#	H45A00010	C41217	"TAPPO 1" 1/4 GAS"	PLUG	BOUCHON	STOEPSSEL	ENCHUFE
#	L20A00014	C43104	GRASSO VASCHE ERPICI EP GREASE A NLGI 000	GREASE	GRAISSE	FETT	GRASA/GORDO
#	M35A00002	D01113	COPERCHIETTO SUPERIORE DD***	LID	COUVERCLE	DECKEL	TAPA
#	M35A00003	D01114	SUPPORTO LATERALE DD ***	SUPPORT	SUPPORT	STUTZE	APOYO
#	M35A00004	D01115	SUPPORTO CENTRALE DD ***	SUPPORT	SUPPORT	STUTZE	APOYO
#	M40A00001	D01116	INGRANAGGIO CENTRALE CMT.DD Z=46	GEAR	ENGRENAGES	ZAHNRAEDER	ENGRANAJE
#	M40A00002	D01117	INGRANAGGIO LATERALE DD Z=46	GEAR	ENGRENAGES	ZAHNRAEDER	ENGRANAJE
#	M35A00005	D01118	PIASTRA INTERNA DD ***	PLATE	PLAQUE	PLATTE	PLACA
#	C15A00041	D01120	DIST. D.58 D.45 L.18,5 CARBON***	SPACER	ENTRETOISE	ABSTANDSTUECK	ESPACIADORES
#	C15A00042	D01121	DIST. D.70-60 D.50,5 L.21,5***	SPACER	ENTRETOISE	ABSTANDSTUECK	ESPACIADORES
#	C05A03924	D01122	RONDELLA PIANA ALB. PORTA.CENT. 8MM	WASHER	RONDELLE	UNTERLEGSSCHEIBE	ARANDELLA
#	C15A00043	D01123	DIST. D.60,3 D.51 L.20	SPACER	ENTRETOISE	ABSTANDSTUECK	ESPACIADORES
#	C05A03925	D01124	RINFORZO VASCA 3 FORI D.13 10MM ***	REINFORCEMENT	RENFORT	VERSTAERKUNG	REFUERZO
#	C05A03933	D01179	RINFORZO VASCA 2 FORI D.13 10MM ***	REINFORCEMENT	RENFORT	VERSTAERKUNG	REFUERZO
#	MK0A00012	D01270	DENTE A LAMA DESTRO DD 12MM	TOOTH	DENT	ZAHN	DIENTE
#	MK0A00017	D01271	DENTE A LAMA SINISTRO DD 12MM	TOOTH	DENT	ZAHN	DIENTE
#	C20A00102	E01126	PORTADENTI CENTRALE DD	TINE SUPPORT	PORTE DENT	ZINKENTRAEGER	PORTADIENTES
#	C20A00110	E01153	COPERCHIO 205 COMPLETO	LID	COUVERCLE	DECKEL	TAPA
#	C20A00111	E01154	COPERCHIO COMPLETO DC 230	LID	COUVERCLE	DECKEL	TAPA
#	C20A00112	E01155	COPERCHIO COMPLETO DC/DD 250	LID	COUVERCLE	DECKEL	TAPA
#	C20A00113	E01156	COPERCHIO COMPLETO DD 300	LID	COUVERCLE	DECKEL	TAPA
#	C20A00114	E01157	VASCA COMPLETA D-200	GEAR BED	VASQUE	OEL-WANNE	BAÑO
#	C20A00118	E01158	VASCA COMPLETA DC230	GEAR BED	VASQUE	OEL-WANNE	BAÑO
#	C20A00119	E01159	VASCA COMPLETA DD 250	GEAR BED	VASQUE	OEL-WANNE	BAÑO
#	C20A00123	E01160	VASCA COMPLETA DD 300	GEAR BED	VASQUE	OEL-WANNE	BAÑO
#	C20A00192	E01448	PORTADENTI LATERALE DD2-DD3	TINE SUPPORT	PORTE DENT	ZINKENTRAEGER	PORTADIENTES
#	C15A00795	E01962	SEMIPROTEZIONE ROTORI DD-DF	SEMI PROTECTION	SEMI PROTECTION	HALBE SICHERUNG	SEMIPROTECCION
#	M65A00003	M01072	GRUPPO CAMBIO DD DX (300) -KS9-	ASSEMBLY OVERVIEW GROUPE		EINHEIT-UEBERBLICK GRUPO	
#	M65A00005	M01073	GRUPPO CAMBIO DD SX (250) -KS9-	ASSEMBLY OVERVIEW GROUPE		EINHEIT-UEBERBLICK GRUPO	

Copyright © 2009 Alpego s.p.a. ®

Tutti i diritti sono riservati. È vietata espressamente la ristampa o l'uso non autorizzato senza permesso scritto dalla Alpego s.p.a.

Tous droits réservés. Toute réimpression ou utilisation non autorisée sans la permission écrite de la Alpego s.p.a. est formellement interdite

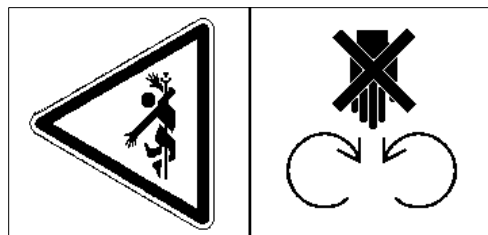
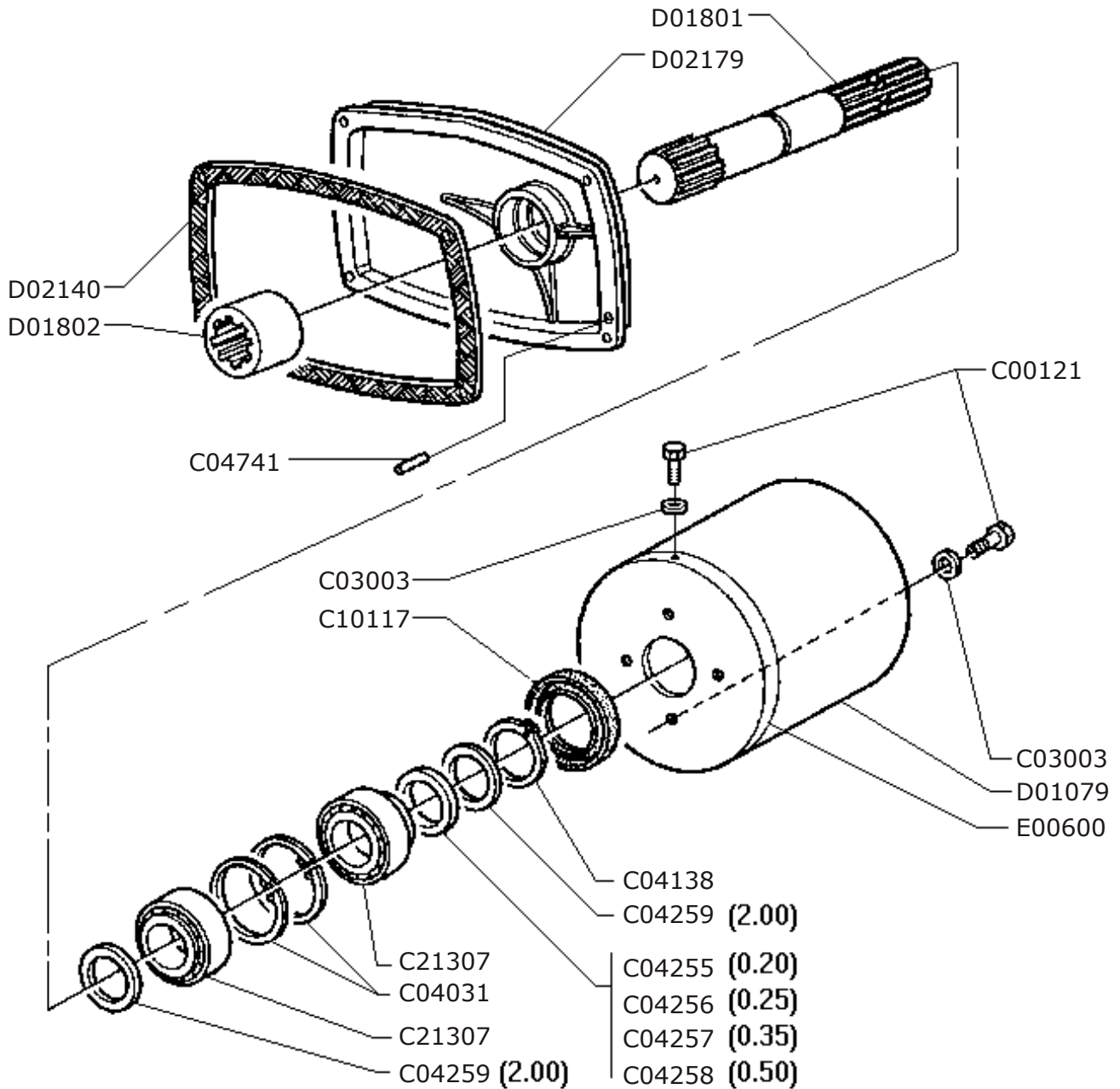
Alle Rechte vorbehalten. Nachdruck, Vervielfältigung und Verbreitung, auch auszugsweise, ist ohne schriftliche Genehmigung der Alpego s.p.a.

Al rights reserved. Any reprinting or unauthorized use without the written permission of Alpego s.p.a. is expressly prohibited

Todos los derechos reservados. Toda reproducción o uso no autorizado sin el consentimiento escrito de Alpego s.p.a. quedan expresamente prohibidos

09/03/2015





**D02608**

100057\_01



## P.d.F. posteriore DD

Rear power take off DD

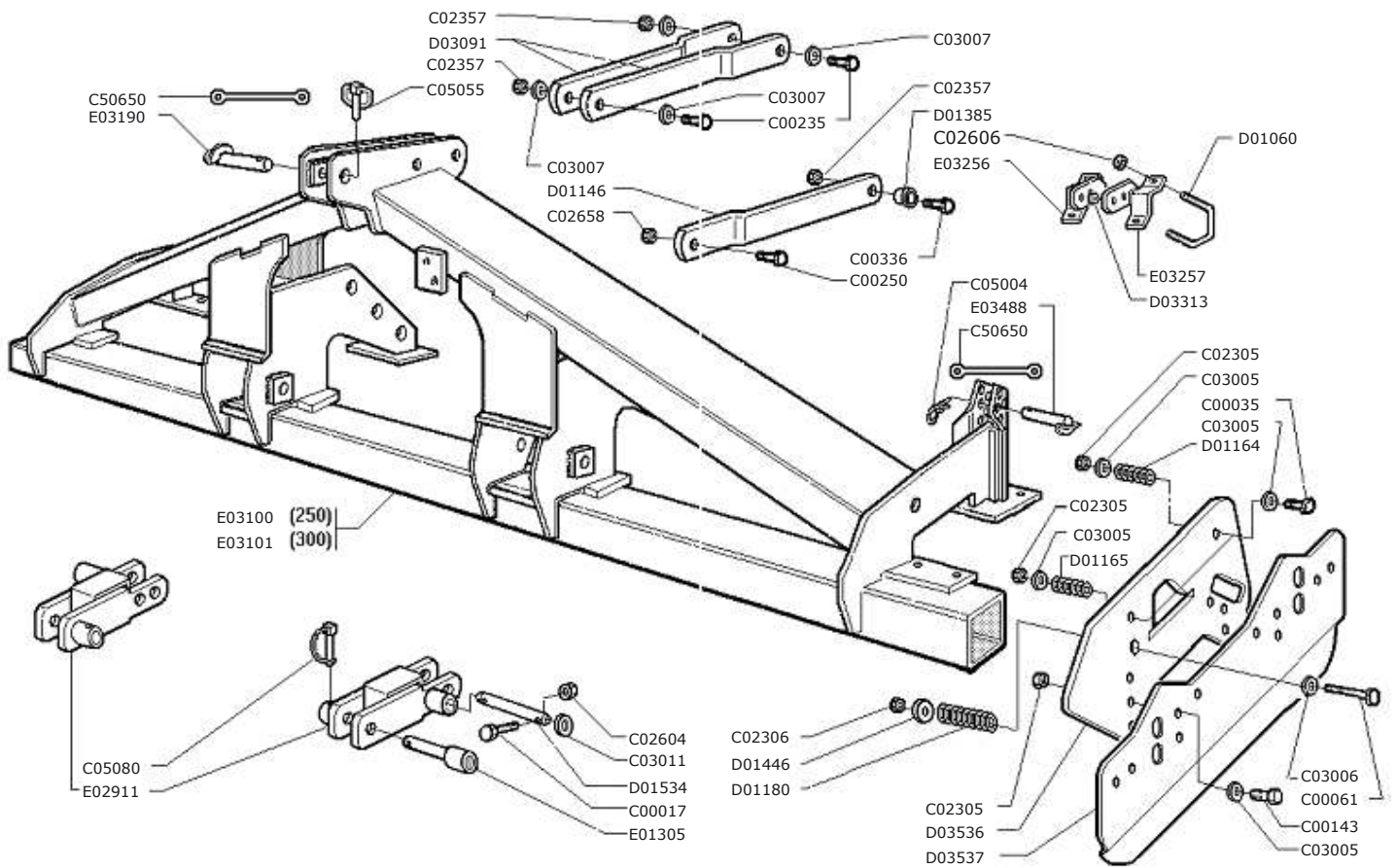
Prise de force arriere DD

Hinrere Zapfwelle DD

Drawing Code: **100057\_1**

Accessories: SA1A00003

N°	Code	Old.	Descrizione / Description	GB	FR	D	E
#	M80A00110	C00121	VITE TE 88 PG FT M8X20 ZINC UNI 5739	SCREW	VIS	SCHRAUBE	TORNILLO
#	M90A00005	C03003	RONDELLA PIANA D.8,4 DIN125-A ZINC.	WASHER	RONDELLE	UNTERLEGSCHIEBE	ARANDELLA
#	MA0A00006	C04031	SEEGER FORO D.62 UNI 7437	SEEGER	SEEGER	SEEGER	SEEGER
#	MA0A00036	C04138	SEEGER ALBERO D.35 UNI 7435	SEEGER	SEEGER	SEEGER	SEEGER
#	MA5A00053	C04255	SPESSORE REG. 35X45X0,20	THICKNESS	CALES	DICKE	ESPESOR
#	MA5A00054	C04256	SPESSORE REG. 35X45X0,25	THICKNESS	CALES	DICKE	ESPESOR
#	MA5A00055	C04257	SPESSORE REG. 35X45X0,35	THICKNESS	CALES	DICKE	ESPESOR
#	MA5A00056	C04258	SPESSORE REG. 35X45X0,50	THICKNESS	CALES	DICKE	ESPESOR
#	MA5A00057	C04259	SPESSORE REG. 35X45X2	THICKNESS	CALES	DICKE	ESPESOR
#	MB0A00079	C04741	SPINA CILINDRICA D.10X16 DIN 6325	SOCKET	GOUPILLE	STECKER	PASADOR
#	H00A00043	C10117	PARAOLIO BASL D.35X62X10 (POLIACR.)	SEALING RING	JOINT SPI	OELABDICHTUNG	PARAOLIO
#	M20A00053	C21307	CUSCINETTO 32007 35X62X18	BEARING	ROULEMENT	KUGELLAGER	COJINETE
#	G10A00038	D01079	PROTEZIONE CARDANO D.INT.220X h 200	PROTECTION	PROTECTION	SCHUTZ	PROTECCIÓN
#	M45A00013	D01801	ALBERO PER PDF POST. LD2	SHAFT	ARBRE	WELLE	EJE
#	M75A00027	D01802	GIUNTO SCANALATO A40X36 X31	JOINT	JOINT	KUPPLUNG	MIXTO
#	H30A00009	D02140	GUARNIZIONE COP. POST. DD	GASKET	GARNITURE	DICHTUNG	GUARNICION
#	C15A00142	D02179	COPERCHIO PDF POST.DD	LID	COUVERCLE	DECKEL	TAPA
#	Q15A00075	D02608	ADESIVO PROTEZIONE ALBERI 110X55	STICKER	ADHESIF	AUFKLEBER	ADHESIVOS
#	C20A00034	E00600	FONDELLO PROTEZIONE COMPLETO	BOTTOM	FOND	BODEN	FONDO





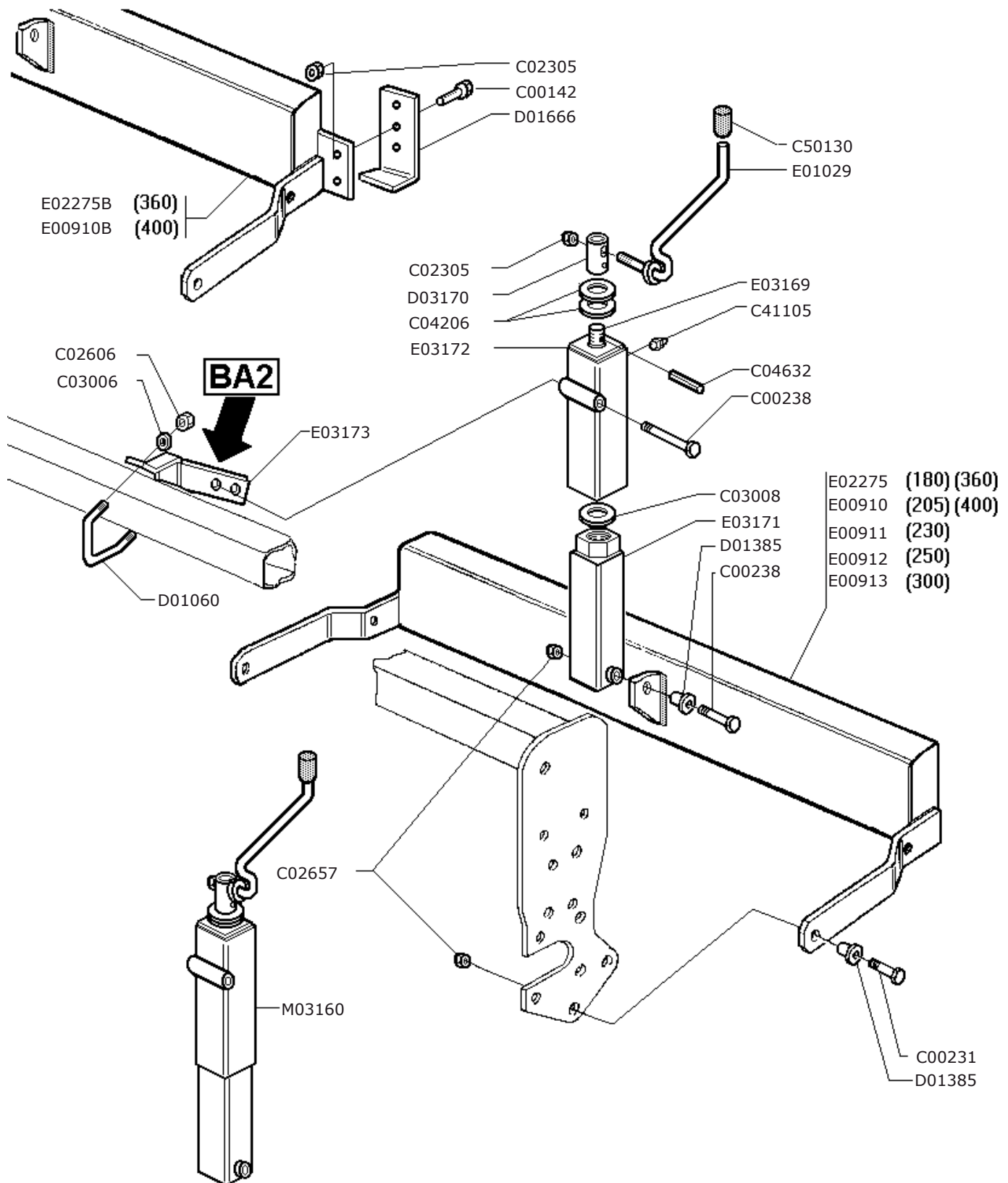


**Telaio**  
Frame  
Chassis  
Rahmen

Drawing Code: **100097\_3**

Accessories:

N°	Code	Old.	Descrizione / Description	GB	FR	D	E
#	M80A00014	C00017	VITE TE 88 PG FP M10X50 UNI 5737 (NERA)	SCREW	VIS	SCHRAUBE	TORNILLO
#	M80A00032	C00035	VITE TE 88 PG FP M12X70 ZINC UNI 5737	SCREW	VIS	SCHRAUBE	TORNILLO
#	M80A00054	C00061	VITE TE 88 PG FP M14X140 ZINC UNI 5737	SCREW	VIS	SCHRAUBE	TORNILLO
#	M80A00130	C00143	VITE TE 88 PG FT M12X35 ZINC UNI 5739	SCREW	VIS	SCHRAUBE	TORNILLO
#	M80A00184	C00235	VITE TE 88 PF FP M16X1,5X70 ZINC UNI 573	SCREW	VIS	SCHRAUBE	TORNILLO
#	M80A00195	C00250	VITE TE 88 PF FP M20X1,5X60 ZINC UNI 573	SCREW	VIS	SCHRAUBE	TORNILLO
#	M80A00218	C00336	VITE TE 88 PFFTM16X1,5X45(sos.da C00229)	SCREW	VIS	SCHRAUBE	TORNILLO
#	M85A00050	C02305	DADO METALBLOC M12 X 1.75	NUT	BOULONS	NUT	DADO
#	M85A00051	C02306	DADO METALBLOC M14 ( SOST. DA C02606 )	NUT	BOULONS	NUT	DADO
#	M85A00054	C02357	DADO METALBLOC M16X1,5	NUT	BOULONS	NUT	DADO
#	M85A00077	C02604	DADO AUTOBLOC ALTO 8 M10 H=11.5 UNI 7473	NUT	BOULONS	NUT	DADO
#	M85A00079	C02606	DADO AUTOBLOC ALTO 8 M14 H=16 UNI 7473	NUT	BOULONS	NUT	DADO
#	M85A00090	C02658	DADO AUTOBLOC ALTO 8 M20X1,5 H=22 UNI 7473	NUT	BOULONS	NUT	DADO
#	M90A00008	C03005	RONDELLA PIANA D.13 DIN125-A ZINC.	WASHER	RONDELLE	UNTERLEGSSCHEIBE	ARANDELLA
#	M90A00009	C03006	RONDELLA PIANA D.15 DIN125-A ZINC.	WASHER	RONDELLE	UNTERLEGSSCHEIBE	ARANDELLA
#	M90A00010	C03007	RONDELLA PIANA D.17 DIN125-A ZINC.	WASHER	RONDELLE	UNTERLEGSSCHEIBE	ARANDELLA
#	M90A00014	C03011	RONDELLA PIANA D.28 DIN125-A ZINC.	WASHER	RONDELLE	UNTERLEGSSCHEIBE	ARANDELLA
#	MB0A00087	C05004	SPINA A MOLLA D.4	SOCKET	GOUPILLE	STECKER	PASADOR
#	MB0A00096	C05055	SPINA A SCATTO D.10 CON TIRANTE IN GOMMA	SOCKET	GOUPILLE	STECKER	PASADOR
#	MB0A00101	C05080	SPINOTTO PER MOTOZAPPA D.10X60 UTILE	PIN	GOUPILLE	STIFT	PASADOR
#	M79A00002	C50650	GOMMINO CON ANELLI L.240 MM.	RUBBER	CAOUTCHOUC	BELAG	GOMAS
#	MD5A00003	D01060	CAVALLOTTO DIAGONALE M14 70X70	PIN	CAVALLIER	STIFT	CAVALLOTTI
#	C10A01103	D01146	LAMA RULLO INF. DD i=410 p=6.5	METAL PLATE	LAME	METALL-PLATTE	CUCHILLA
#							
#	MF5A00007	D01165	MOLLA SUP.FIANC.DD D.EST.25XD.INT.F6X35	SPRING	RESSORT	FEDER	MUELLE
#	MF5A00009	D01180	MOLLA INF.FIANCATE DD D.EST42XD.F6X90	SPRING	RESSORT	FEDER	MUELLE
#	C15A00062	D01385	BUSSOLA D25/32 D.16,5 L.18,5 CARBON+ZINC	BUSHING	ENTRETOISE	BUCHSE	BRUJULA
#	C05A03975	D01446	RONDELLA D.60X15X4	WASHER	RONDELLE	UNTERLEGSSCHEIBE	ARANDELLA
#	M15A00017	D01534	PERNO D.28X224 UT.2 FORI D.11ZINC	PIN	PIVOT	STIFT	PIN
#	C10A01273	D03091	LAMA RULLO SUPERIORE RE I=470	METAL PLATE	LAME	METALL-PLATTE	CUCHILLA
#	C00A00113	D03313	DIST. D.26,9 D.21,7 L.13	SPACER	ENTRETOISE	ABSTANDSTUECK	ESPACIADORES
#	C05A04316	D03536	SUPPORTO FIANCATA MOBILE DD-DM 10MM	SUPPORT	SUPPORT	STUTZE	APOYO
#	C10A01344	D03537	FIANCATA MOBILE DD-DM 6MM	SIDE	LONG	NEBEN	JUNTO
#	M15A00169	E01305	PERNO D.28X106 UT.FORO D.12 SALD ZINC***	PIN	PIVOT	STIFT	PIN
#	C20A00523	E02911	ATTACCO TRATT. DD-RE	CONNECTION	ATTELAGE	ANSCHLUSS	ATAQUE
#	C20A00554	E03100	TELAIO DD-RE-250	FRAME	CHASSIS	RAHMEN	MARCO
#	C20A00555	E03101	TELAIO DD-RE-300	FRAME	CHASSIS	RAHMEN	MARCO
#	M15A00172	E03190	PERNO ROND.25X109 UT.FORO D.12 ZINC***	PIN	PIVOT	STIFT	PIN
#	C20A00588	E03256	MORSETTO DESTRO PORTA BRACCIO	TERMINAL	TERMINAL	TERMINAL	TERMINALES
#	C20A00589	E03257	MORSETTO SINISTRO PORTA BRACCIO	TERMINAL	TERMINAL	TERMINAL	TERMINALES
#	M15A00174	E03488	PERNO ROND D.20X63 UT. FORO D.6 ZINC***	PIN	PIVOT	STIFT	PIN





## S06011,S06012 - Barra affinamento BA2 (erpice pieghevole)

S06011,S06012 - Rear bar BA2 (folding harrow)

S06011,S06012 - Barra arriere BA2 (pliante hurses)

S06011,S06012 - Hintere stange BA2 (klappbar kreiseleggen)

Drawing Code: **100098\_1**

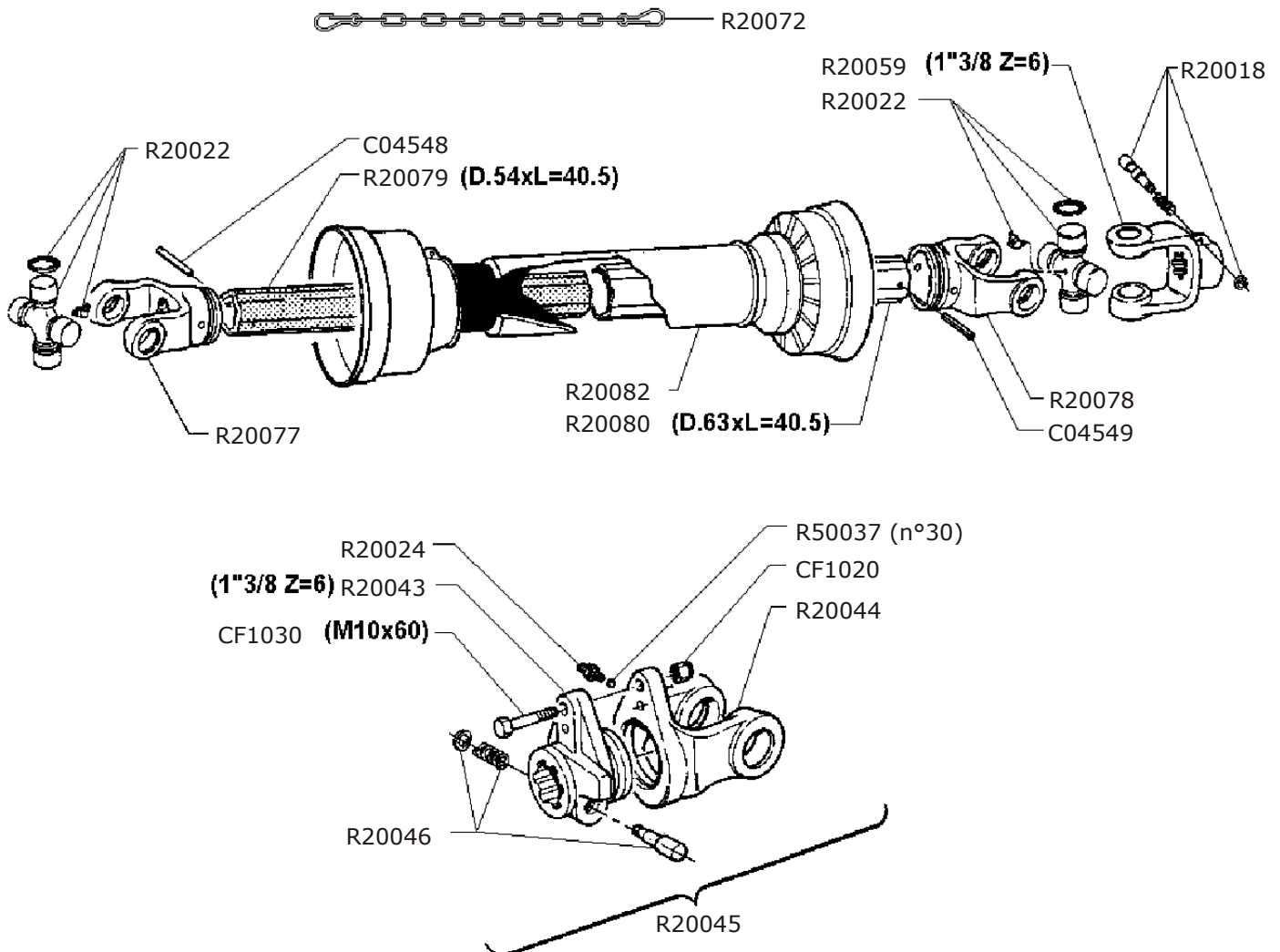
Accessories:

N°	Code	Old.	Descrizione /Description	GB	FR	D	E
#	M80A00129	C00142	VITE TE 88 PG FT M12X30 ZINC UNI 5739	SCREW	VIS	SCHRAUBE	TORNILLO
#	M80A00180	C00231	VITE TE 88 PF FP M16X1,5X50 ZINC UNI 5738	SCREW	VIS	SCHRAUBE	TORNILLO
#	M80A00187	C00238	VITE TE 88 PF FP M16X1,5X100 ZINC UNI 57	SCREW	VIS	SCHRAUBE	TORNILLO
#	M85A00050	C02305	DADO METALBLOC M12 X 1.75	NUT	BOULONS	NUT	DADO
#	M85A00079	C02606	DADO AUTOBLOC ALTO 8 M14 H=16 UNI 7473	NUT	BOULONS	NUT	DADO
#	M85A00089	C02657	DADO AUTOBLOC ALTO 8 M16X1,5 H=18 UNI 7473	NUT	BOULONS	NUT	DADO
#	M90A00009	C03006	RONDELLA PIANA D.15 DIN125-A ZINC.	WASHER	RONDELLE	UNTERLEGSSCHEIBE	ARANDELLA
#	M90A00011	C03008	RONDELLA PIANA D.21 DIN125-A ZINC.	WASHER	RONDELLE	UNTERLEGSSCHEIBE	ARANDELLA
#	MA5A00005	C04206	SPESSORE 28x40x2 ZINC.+DEIDR. HRC 44	THICKNESS	CALES	DICKE	ESPESOR
#	MB0A00065	C04632	SPINA SPIROL D.8X40	SOCKET	GOUPILLE	STECKER	PASADOR
#	MJ5A00005	C41105	INGRASSATORE M10X1 DIRITTO	GREASE NIPPLE	GRAISSOR	FETTBUECHSE	ENGRASADOR
#	G10A00015	C50130	TAPPO PLASTICA FEMMINA D.10	PLUG	BOUCHON	STOEPSSEL	ENCHUFE
#	MD5A00003	D01060	CAVALLOTTO DIAGONALE M14 70X70	PIN	CAVALLIER	STIFT	CAVALLOTTI
#	C15A00062	D01385	BUSSOLA D25/32 D.16,5 L.18,5 CARBON+ZINC	BUSHING	ENTRETOISE	BUCHSE	BRUJULA
#	C10A01141	D01666	SLITTINA CENTRALE BARRA AFFIN. 8MM	SKID	PATTINS	SLED	TRINEO
#	C15A00233	D03170	DIST. D.26,9 D.20 L.53+FORO D.8+FORO D.12	SPACER	ENTRETOISE	ABSTANDSTUECK	ESPACIADORES
#	C20A00043	E00910	BARRA AFFINAMENTO BA2 205 ***	BAR	BARRE	STAB	BARRA
#	C20A00044	E00910B	BARRA AFFINAMENTO BA2-205 SIN. CON PIASTRINA ***	BAR	BARRE	STAB	BARRA
#	C20A00045	E00911	BARRA AFFINAMENTO BA2-230 ***	BAR	BARRE	STAB	BARRA
#	C20A00046	E00912	BARRA AFFINAMENTO BA2-250 ***	BAR	BARRE	STAB	BARRA
#	C20A00047	E00913	BARRA AFFINAMENTO BA2-300 ***	BAR	BARRE	STAB	BARRA
#	C20A00074	E01029	MANOVELLA M12 PER BARRE	CRANK	MANIVELLE	SPINDEL	MANIVELA
#	C20A00376	E02275	BARRA AFFINAMENTO BA2-180	BAR	BARRE	STAB	BARRA
#	C20A00377	E02275B	BARRA AFFINAMENTO BA2-180 CON PIASTRINA ***	BAR	BARRE	STAB	BARRA
#	C20A00560	E03169	BARRA FILETTATA MANOV.BA2-BA3	BAR	BARRE	STAB	BARRA
#	C20A00561	E03171	TUBO INTERNO MANOVELLA BA2-BA3 M20	TUBE	TUBE	ROHR	TUBO
#	C20A00562	E03172	TUBO EST. MANOVELLA BA2-BA3	TUBE	TUBE	ROHR	TUBO
#	C20A00563	E03173	STAFFA PORTA MANOVELLA BA2-BA3	BRACKET	SUPPORT	BUEGEL	SOPORTE
#	M79A00017	M03160	MANOVELLA COMPLET. BA2-BA3 CORSA 200 ZINCATA BIANCA	CRANK	MANIVELLE	SPINDEL	MANIVELA



Codice cardano  
Code pto shaft  
Code de arbre de transmission  
Code gelenkwelle

**M01401**



100059\_00



# Cardano

Pto shaft

Arbre de transmission

Gelenkwelle

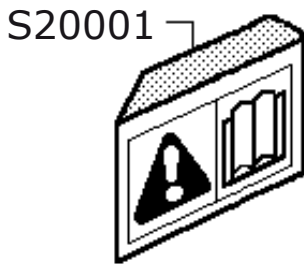
Drawing Code:

**100059\_0**

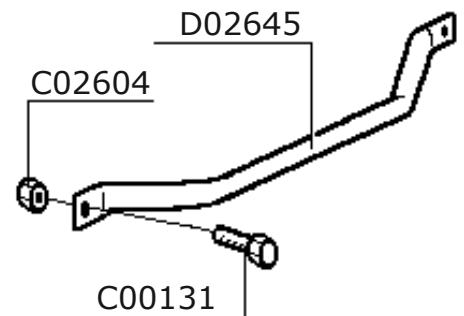
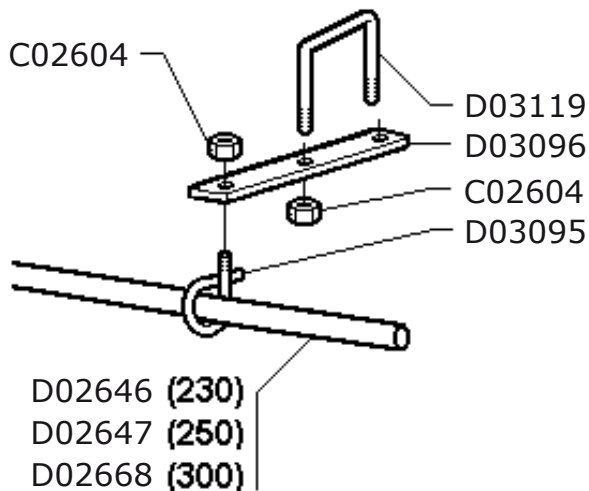
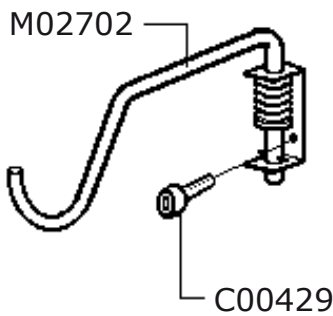
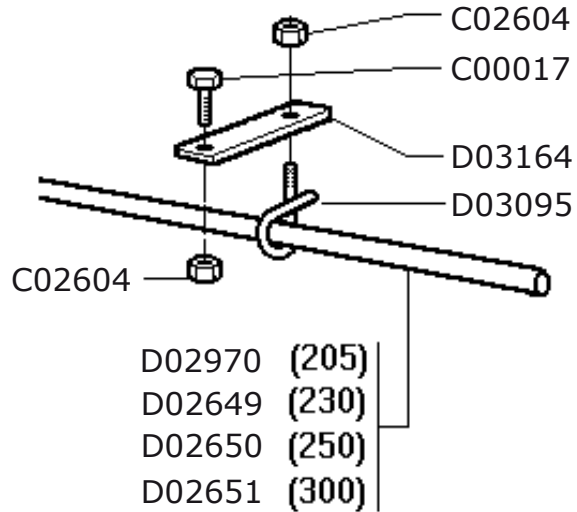
Accessories:

N°	Code	Old.	Descrizione / Description
#	MB0A00036	C04548	SPINA ELASTICA D.10X80
#	MB0A00037	C04549	SPINA ELASTICA D.10X90
#	SCOA00002	CF1020	CONF. 10 BULLONI TE 8.8 M8X60 ( SICUREZZA CARDANO)
#	SCOA00003	CF1030	CONF. 10 BULLONI TE 8.8 M10X60 (SICUREZZA CARDANO)
#	M70A00002	M01401	"CARDANO R08-880-LIMIT. 1""3/8Z6-1""3/8Z6"
#	MF0A00060	R20018	PULSANTE COMPLETO (cod.1801038)
#	M71A00003	R20022	CROCIERA BX8 (COD. 1008017)
#	MJ5A00011	R20024	INGRASSATORE (cod.6560010)
#	M75A00047	R20043	MOZZO LIMITATORE 8 (COD.1708035)
#	M72A00021	R20044	FORCELLA LIMITAT.8 (cod.1708036)
#	M75A00048	R20045	LIMITATORE LC8 COMPLETO SOST. DA R50040
#	MF0A00061	R20046	PULSANTE COMPLETO LUNGO
#	M72A00025	R20059	"FORCELLA 8 1"" 3/8 Z=6 (COD.1708003)"
#	MH0A00021	R20072	CATENELLA FERMA PROTEZIONE CARDANO
#	M72A00027	R20077	FORCELLA TUBO INT 8/54 (1708032)
#	M72A00028	R20078	FORCELLA TUBO EST 8/63 (1708030)
#	M73A00024	R20079	TUBO INT 8 D.54x405 CMT. (M01401)
#	M73A00025	R20080	TUBO EST 8 D.63X4 (1537181)
#	G10A00079	R20082	PROTEZIONE COMPL. A8X1200 (1008207) EUR
#	M20A00111	R50037	"SFERA DIN 5401 1/4"""

GB	FR	D	E
SOCKET	GOUPILLE	STECKER	PASADOR
SOCKET	GOUPILLE	STECKER	PASADOR
KIT	CONFECTION	SATZ	CONF.
KIT	CONFECTION	SATZ	CONF.
UNIVERSAL JOINT	CARDAN	GELENKWELLE	CARDAN
BUTTON	BOUTON	BUTTON	BOTÓN
CRUISE	CROISIÈRE	CRUISE	CRUISE
GREASE NIPPLE	GRAISSOR	FETTBUECHSE	ENGRASADOR
HUB	ESSIEU	NABE	MAZO
FORK	MACHOIRE	GABEL	HORQUILLA
LIMITER	LIMITEUR	BEGRENZER	LIMITADOR
BUTTON	BOUTON	BUTTON	BOTÓN
FORK	MACHOIRE	GABEL	HORQUILLA
CHAIN	CHAINE	KETTE	CADENA
FORK	MACHOIRE	GABEL	HORQUILLA
FORK	MACHOIRE	GABEL	HORQUILLA
TUBE	TUBE	ROHR	TUBO
TUBE	TUBE	ROHR	TUBO
PROTECTION	PROTECTION	SCHUTZ	PROTECCIÓN
BALL	BOULES	BALL	BOLA



**Serie etichette di sicurezza**  
**Security labels**  
**Sicherungsaufkleber**  
**Etiquettes de securite**







**Kit C.E.**

Kit C.E.

Kit C.E.

Kit C.E.

Drawing Code: **100100\_1**

Accessories:

N°	Code	Old.	Descrizione / Description
#	M80A00014	C00017	VITE TE 88 PG FP M10X50 UNI 5737 (NERA)
#	M80A00118	C00131	VITE TE 88 PG FT M10X25 ZINC UNI 5739
#	M80A00242	C00429	VITE TCEI PG M10X20 ZINC UNI 5931
#	M85A00077	C02604	DADO AUTOBLOC ALTO 8 M10 H=11.5 UNI 7473
#	C10A01226	D02645	PROTEZIONE LATERALE DD-DF
#	C00A00063	D02646	TUBO PROTEZIONE L=500
#	C00A00064	D02647	TUBO PROTEZIONE L=610
#	C00A00066	D02649	TUBO PROTEZIONE L=2160
#	C00A00067	D02650	TUBO PROTEZIONE L=2390
#	C00A00068	D02651	TUBO PROTEZIONE L=2770
#	C00A00071	D02668	TUBO PROTEZIONE L=850
#	C00A00093	D02970	TUBO PROTEZIONE L=1920
#	MH5A00041	D03095	GANCIO M10 PER TUBO D. 26,9
#	C05A04234	D03096	STAFFA SUPP. PROT. ANTER. 80X80 8mm
#	MD5A00011	D03119	CAVALLOTTO QUADRO M10 80x80
#	C05A04253	D03164	STAFFA PROT. POST. DC-DD-DE-DF-DH 8M
#	M79A00013	M02702	GANCIO SUPP. CARDANO COMPL.***
#	SC0A00012	S20001	CONFEZIONE ETICHETTE DI SICUREZZA

GB	FR	D	E
SCREW	VIS	SCHRAUBE	TORNILLO
SCREW	VIS	SCHRAUBE	TORNILLO
SCREW	VIS	SCHRAUBE	TORNILLO
NUT	BOULONS	NUT	DADO
PROTECTION	PROTECTION	SCHUTZ	PROTECCIÓN
TUBE	TUBE	ROHR	TUBO
TUBE	TUBE	ROHR	TUBO
TUBE	TUBE	ROHR	TUBO
TUBE	TUBE	ROHR	TUBO
TUBE	TUBE	ROHR	TUBO
TUBE	TUBE	ROHR	TUBO
TUBE	TUBE	ROHR	TUBO
TUBE	TUBE	ROHR	TUBO
TUBE	TUBE	ROHR	TUBO
HOOK	ATTACHE	HAKEN	ENGANCHE
BRACKET	SUPPORT	BUEGEL	SOPORTE
PIN	CAVALLIER	STIFT	CAVALLOTTI
BRACKET	SUPPORT	BUEGEL	SOPORTE
HOOK	ATTACHE	HAKEN	ENGANCHE
KIT	CONFECTION	SATZ	CONF.

## Cardano con limitatore automatico 540 g/min

Pto shaft with cam-type cut out clutch 540 g/min

Arbre de transmission avec limiteur debrayable 540 g/min

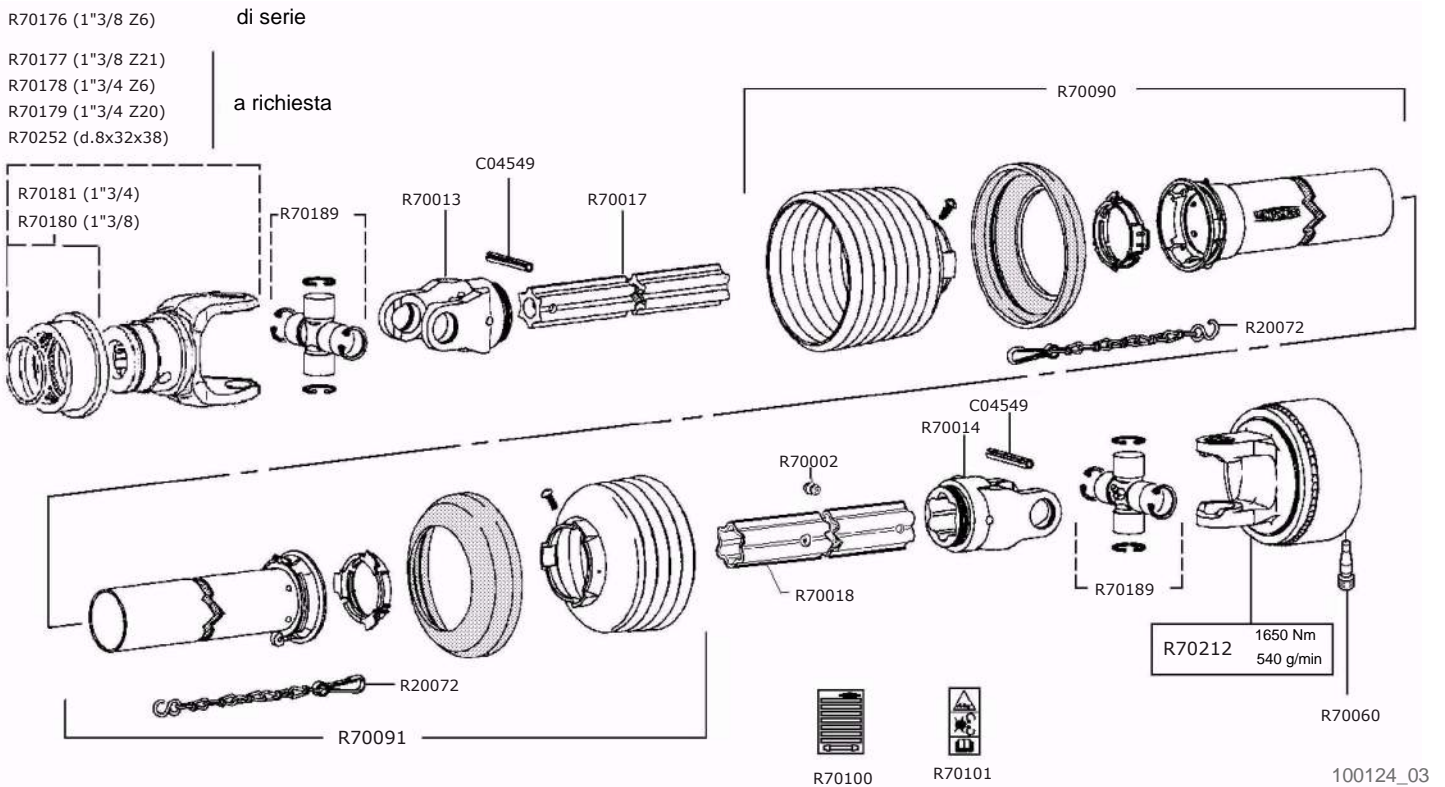
Gelenkwelle mit nockenschaltkupplung 540 g/min

Drawing Code: **100124\_3\_f1**

Accessories:

Codice cardano  
Code pto shaft  
Code de arbre de transmission  
Code gelenkwelle

**M03233W**





## Cardano con limitatore automatico 540 g/min

Pto shaft with cam-type cut out clutch 540 g/min

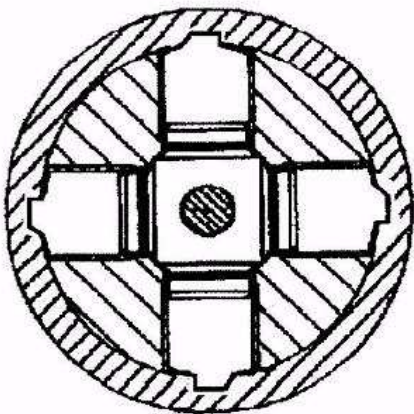
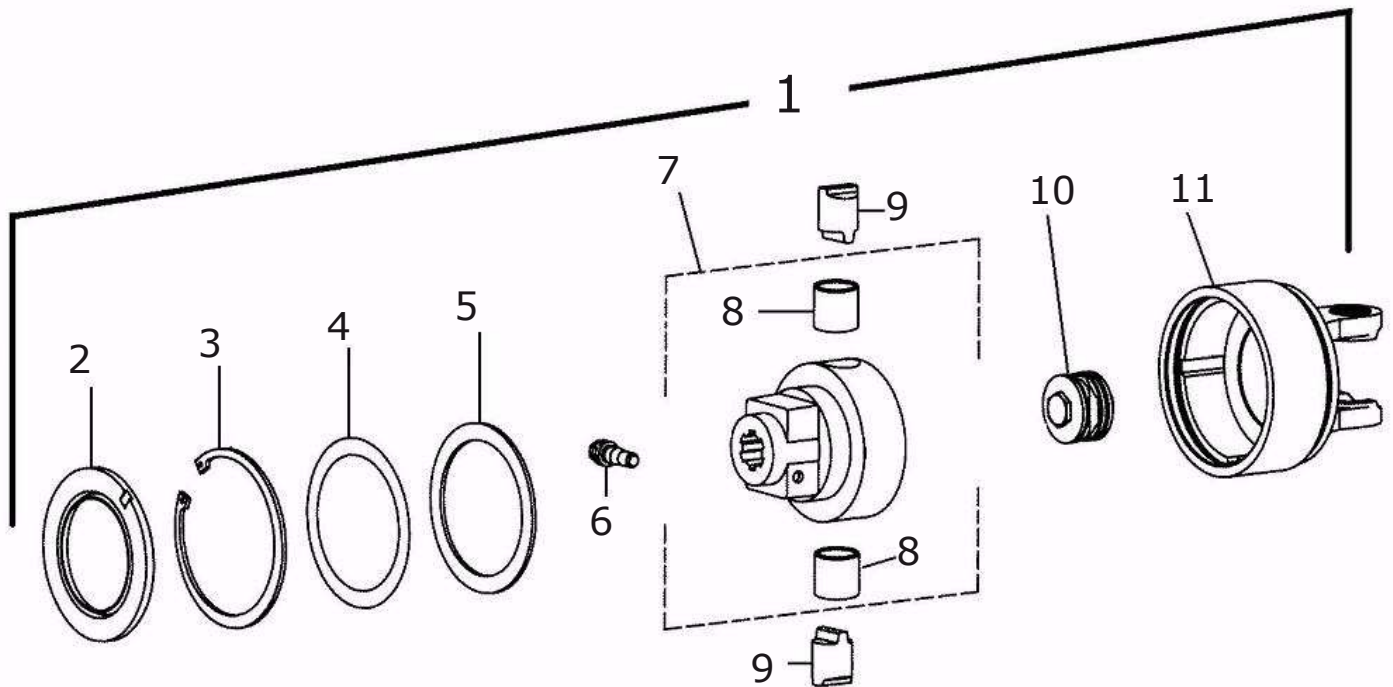
Arbre de transmission avec limiteur debrayable 540 g/min

Gelenkwelle mit nockenschaltkupplung 540 g/min

Drawing Code: **100124\_3\_f1**

Accessories:

N°	Code	Old.	Descrizione / Description	GB	FR	D	E
#	MB0A00037	C04549	SPINA ELASTICA D.10X90	SOCKET	GOUPILLE	STECKER	PASADOR
#	M70A00023	M03233W	"CARDANO W2500-560 AUT.1650NM 1""3/8-1""3/8"	UNIVERSAL JOINT	CARDAN	GELENKWELLE	CARDAN
#	MH0A00021	R20072	CATENELLA FERMA PROTEZIONE CARDANO	CHAIN	CHAINE	KETTE	CADENA
#	MJ5A00012	R70002	INGRASSATORE A PRESSIONE D.4.6 WALTER.	GREASE NIPPLE	GRAISSOR	FETTBUECHSE	ENGRASADOR
#	M72A00086	R70013	FORCELLA RG2500 S4 WALTERSCHEID 097133	FORK	MACHOIRE	GABEL	HORQUILLA
#	M72A00087	R70014	FORCELLA RG2500 S5 WAL. 097140 EST.STELL	FORK	MACHOIRE	GABEL	HORQUILLA
#	M73A00055	R70017	TUBO S4V-410 BONIF. WALTERSCHEID 117212	TUBE	TUBE	ROHR	TUBO
#	M73A00056	R70018	TUBO S5H-395 TEMPRATO WALTERSCHEID 138344	TUBE	TUBE	ROHR	TUBO
#	MF0A00067	R70060	"CONO FISSAGGIO LIMIT AUT. 1""3/8 L=36.5"	CONE	CONE	KEGEL-	CONO
#	G10A00099	R70090	PROT. CARD. ESTERNA SDH25-A550 375621	PROTECTION	PROTECTION	SCHUTZ	PROTECCIÓN
#	G10A00100	R70091	PROT. CARD. INTERNA SDH25-J550 375620	PROTECTION	PROTECTION	SCHUTZ	PROTECCIÓN
#	Q15A00470	R70100	ADESIVO ISTRUZIONI WALTERSCHEID 705066	STICKER	ADHESIF	AUFKLEBER	ADHESIVOS
#	Q15A00471	R70101	ADESIVO SICUREZZA WALTERSCHEID 104689	STICKER	ADHESIF	AUFKLEBER	ADHESIVOS
#	M72A00107	R70176	"FORCELLA RAPIDO ASG2500-1""3/8 Z=6"	FORK	MACHOIRE	GABEL	HORQUILLA
#	M72A00108	R70177	"FORCELLA RAPIDO ASG2500-1""3/8 Z=21"	FORK	MACHOIRE	GABEL	HORQUILLA
#	M72A00109	R70178	"FORCELLA RAPIDO ASG2500-1""3/4 Z=6"	FORK	MACHOIRE	GABEL	HORQUILLA
#	M72A00110	R70179	"FORCELLA RAPIDO ASG2500-1""3/4 Z=20"	FORK	MACHOIRE	GABEL	HORQUILLA
#	M25A00028	R70180	"COLLARE RAPIDO ""118 AS"" 1""3/8 AGRAS"	METAL RING	COLLARE	METALLRING	COLLAR
#	M25A00029	R70181	"COLLARE RAPIDO ""119 AS"" 1""3/4 AGRAS"	METAL RING	COLLARE	METALLRING	COLLAR
#	M71A00014	R70189	"CROCIERA COMPL WALT.2500 ""LONG LIFE 250H"""	CRUISE	CROISIÈRE	CRUISE	CRUISE
#	M75A00113	R70212	"LIMIT. COMPL. K64/22R 1""3/8 Z6 1650 NM ROT.DEST."	LIMITER	LIMITEUR	BEGRENZER	LIMITADOR
#	M72A00124	R70252	FORCELLA ASG2500 D8X32X38 (RUSSIA)	FORK	MACHOIRE	GABEL	HORQUILLA



**SEZIONE LIMITATORE DESTRO VISTA DAL MOZZO**

100124\_03\_f2





## Limitatore automatico 540 g/min

Cam-type cut out clutch 540 g/min

Limiteur debrayable a cames 540 g/min

Nockenschaltkupplung 540 g/min

Drawing Code: **100124\_3\_f2**

Accessories:

N°	Code	Old.	Descrizione / Description
1	M75A00113	R70212	"LIMIT. COMPL. K64/22R 1""3/8 Z6 1650 NM ROT.DEST."
2	H00A00099	R70205	ANELLO DI TENUTA D.152.5X99X8
3	MA0A00020	C04047	SEEGER FORO D.150 UNI 7437
4	MA5A00050	C04250	SPESSORE REG. 125.5X139.5X0,5
5	C15A00945	R70124	ANELLO DI RINFORZO K64 120x150x3.5
6	MF0A00067	R70060	"CONO FISSAGGIO LIMIT AUT. 1""3/8 L=36.5"
7	M75A00114	R70213	"MOZZO COMPLETO K64/22 1""3/8 Z6"
8	M25A00030	R70207	BUSSOLA D.39 DI.35 L=35MM
9	C15A00951	R70208	CAMMA D.35 K64/22 R-L
10	MF5A00064	R70209	PACCHETTO MOLLE K64/22 1300/2500 NM
11	C20A02602	R70210	SCATOLA LIMIT DESTRA K64/22-24 2500

GB	FR	D	E
LIMITER	LIMITEUR	BEGRENZER	LIMITADOR
RING	AMORTISSEUR	RING	ANILLO
SEEGER	SEEGER	SEEGER	SEEGER
THICKNESS	CALES	DICKE	ESPESOR
RING	AMORTISSEUR	RING	ANILLO
CONE	CONE	KEGEL-	CONO
HUB	ESSIEU	NABE	MAZO
BUSHING	ENTRETOISE	BUCHSE	BRUJULA
CAM	CAM	CAM	FAO
KIT	CONFECTION	SATZ	CONF.
BOX	BOITE	SCHACTEL	RECUADRO

## Rullo spiral SP2

Spiral roller SP2

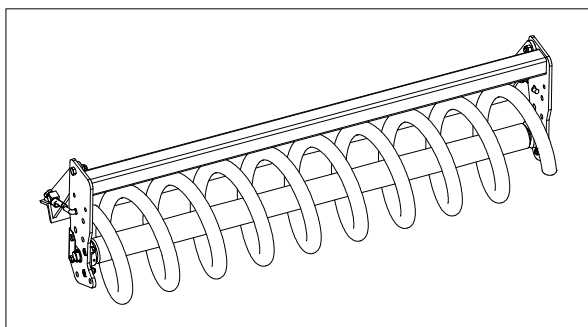
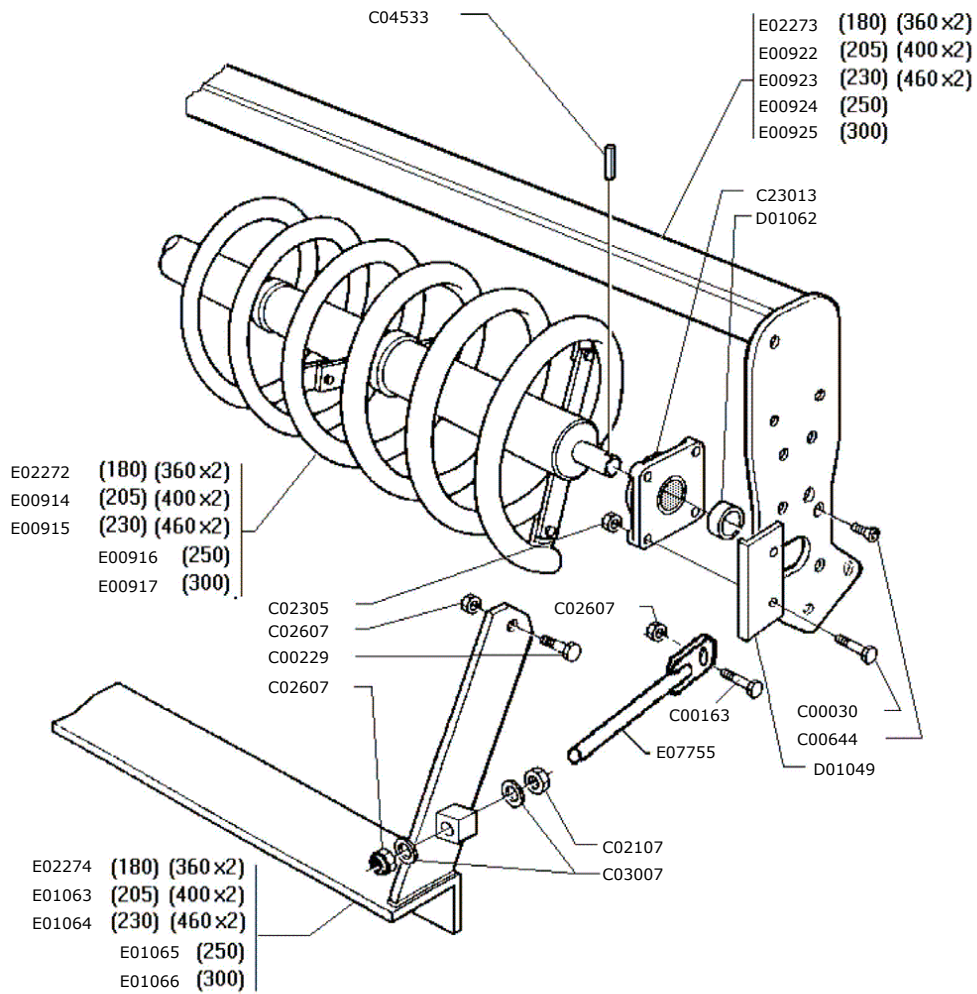
Rouleau spiral SP2

Spiral walze SP2

Drawing Code:

**100037\_0**

Accessories:



- S02005 (SP2-180)
- S02006 (SP2-205)
- S02007 (SP2-230)
- S02008 (SP2-250)
- S02009 (SP2-300)

100037\_00



## Rullo spiral SP2

Spiral roller SP2

Rouleau spiral SP2

Spiral walze SP2

Drawing Code:

**100037\_0**

Accessories:

N°	Code	Old.	Descrizione / Description	GB	FR	D	E
#	M80A00027	C00030	VITE TE 88 PG FP M12X40 ZINC UNI 5737	SCREW	VIS	SCHRAUBE	TORNILLO
#	M80A00149	C00163	VITE TE 88 PG FT M16X40 ZINC UNI 5739	SCREW	VIS	SCHRAUBE	TORNILLO
#	M80A00179	C00229	VITE TE 10.9 M16X1,5X45 ZINC F25	SCREW	VIS	SCHRAUBE	TORNILLO
#	M80A00292	C00644	VITE TSPEI 10.9 PG M12X40 ZINC UNI 5933	SCREW	VIS	SCHRAUBE	TORNILLO
#	M85A00030	C02107	DADO NORMALE 8 PG M16 UNI 5588 ZINC	NUT	BOULONS	NUT	DADO
#	M85A00050	C02305	DADO METALBLOC M12 X 1.75	NUT	BOULONS	NUT	DADO
#	M85A00080	C02607	DADO AUTOBLOC ALTO 8 M16 H=18 UNI 7473	NUT	BOULONS	NUT	DADO
#	M90A00010	C03007	RONDELLA PIANA D.17 DIN125-A ZINC.	WASHER	RONDELLE	UNTERLEGSSCHEIBE	ARANDELLA
#	MB0A00022	C04533	SPINA ELASTICA D.8X45	SOCKET	GOUPILLE	STECKER	PASADOR
#	M30A00004	C23013	SUPPORTO UCF 207	SUPPORT	SUPPORT	STUTZE	APOYO
#	C05A03920	D01049	PIASTRINA POST. PER UCF 207	METAL STRAP	METAL DEPLOYE	BANDEISEN	PLATILLO
#	C00A00006	D01062	DIST. D.42,4 D.35,5 L.14	SPACER	ENTRETOISE	ABSTANDSTUECK	ESPACIADORES
#	C20A00048	E00914	RULLO SPIRAL SP2 205	ROLLER	ROULEAU	WALZE	RODILLO
#	C20A00049	E00915	RULLO SPIRAL SP2-230	ROLLER	ROULEAU	WALZE	RODILLO
#	C20A00050	E00916	RULLO SPIRAL SP2-250	ROLLER	ROULEAU	WALZE	RODILLO
#	C20A00051	E00917	RULLO SPIRAL SP2-300	ROLLER	ROULEAU	WALZE	RODILLO
#	C20A00052	E00922	TELAIO RULLO 205	FRAME	CHASSIS	RAHMEN	MARCO
#	C20A00053	E00923	TELAIO RULLO 230	FRAME	CHASSIS	RAHMEN	MARCO
#	C20A00054	E00924	TELAIO RULLO 250	FRAME	CHASSIS	RAHMEN	MARCO
#	C20A00055	E00925	TELAIO RULLO 300	FRAME	CHASSIS	RAHMEN	MARCO
#	C20A00087	E01063	TELAIO RASCHIATORE 205	FRAME	CHASSIS	RAHMEN	MARCO
#	C20A00088	E01064	TELAIO RASCHIATORE 230	FRAME	CHASSIS	RAHMEN	MARCO
#	C20A00089	E01065	TELAIO RASCHIATORE 250	FRAME	CHASSIS	RAHMEN	MARCO
#	C20A00090	E01066	TELAIO RASCHIATORE 300	FRAME	CHASSIS	RAHMEN	MARCO
#	C20A00373	E02272	RULLO SPIRAL SP2-180	ROLLER	ROULEAU	WALZE	RODILLO
#	C20A00374	E02273	TELAIO RULLO 180	FRAME	CHASSIS	RAHMEN	MARCO
#	C20A00375	E02274	TELAIO RASCHIATORE 180	FRAME	CHASSIS	RAHMEN	MARCO
#	C20A01375	E07755	TIRANTE RASCHIATORE M16 CON PIASTRINA	TIE ROD	TIRANT	ZUGSTANGE	TIRANTE
#	S00A00005	S02005	RULLO SPIRAL SP2-180 COMPLETO	ROLLER	ROULEAU	WALZE	RODILLO
#	S00A00006	S02006	RULLO SPIRAL SP2 205 COMPLETO	ROLLER	ROULEAU	WALZE	RODILLO
#	S00A00007	S02007	RULLO SPIRAL SP2 230 COMPLETO	ROLLER	ROULEAU	WALZE	RODILLO
#	S00A00009	S02008	RULLO SPIRAL SP2 250 COMPLETO	ROLLER	ROULEAU	WALZE	RODILLO
#	S00A00011	S02009	RULLO SPIRAL SP2 300 COMPLETO	ROLLER	ROULEAU	WALZE	RODILLO

## Rullo spiral SP3

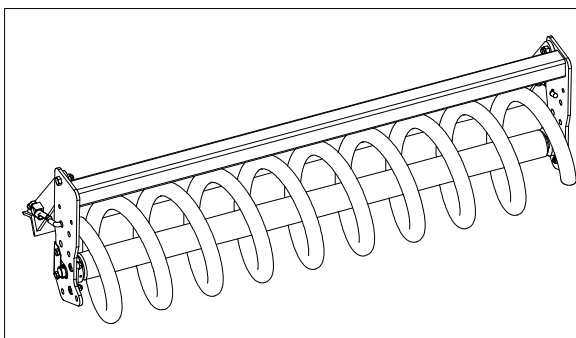
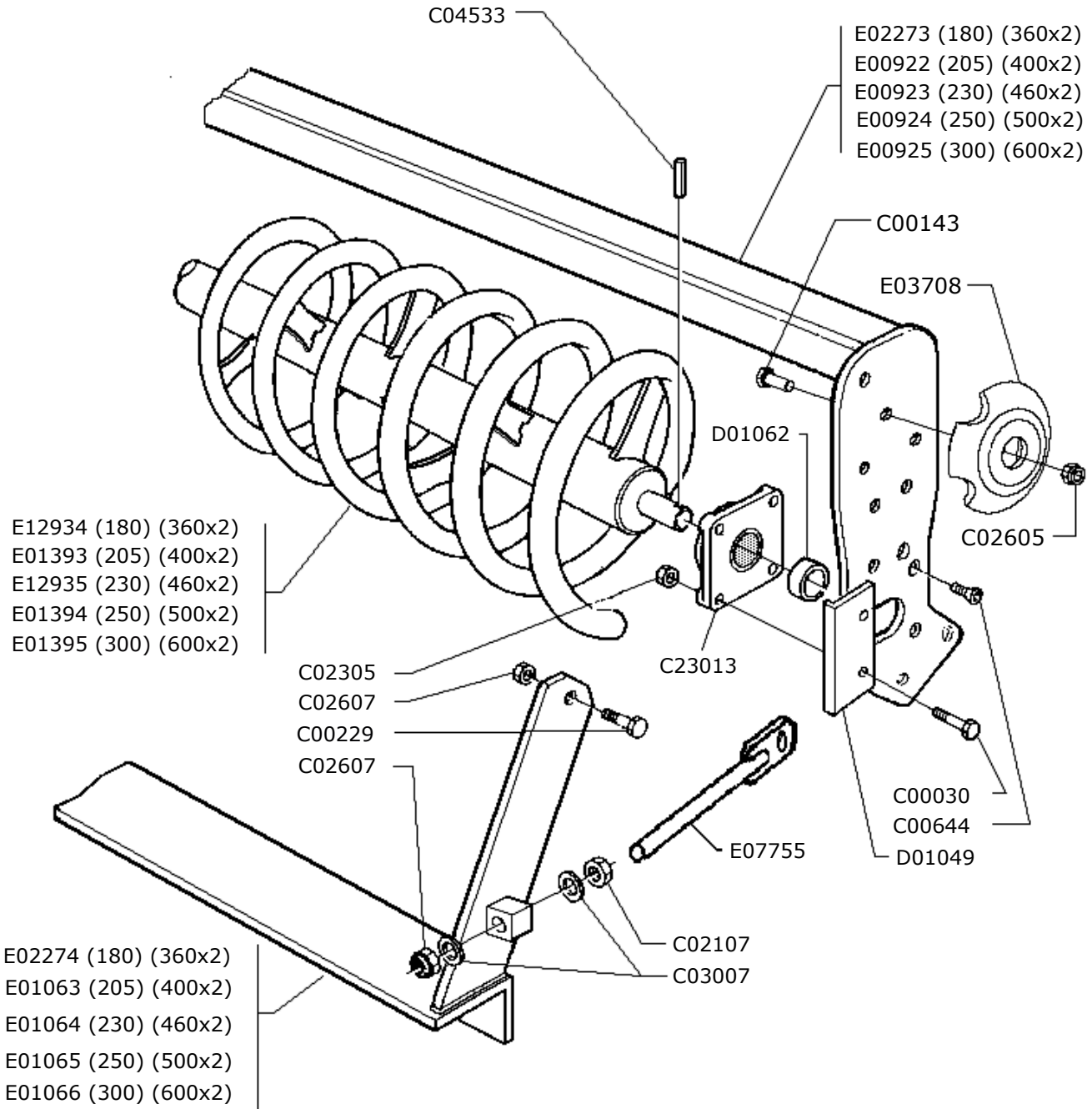
Spiral roller SP3

Rouleau spiral SP3

Spiral walze SP3

Drawing Code: **100016\_2**

Accessories: S00A00013 - S00A00014 - S00A00015 - S00A00017 - S00A00019



S02017 (SP3-180)  
S02014 (SP3-205)  
S02019 (SP3-230)  
S02015 (SP3-250)  
S02016 (SP3-300)

100016\_02



## Rullo spiral SP3

Spiral roller SP3

Rouleau spiral SP3

Spiral walze SP3

Drawing Code:

**100016\_2**

Accessories:

S00A00013 - S00A00014 - S00A00015 - S00A00017 - S00A00019

N°	Code	Old.	Descrizione / Description	GB	FR	D	E
#	M80A00027	C00030	VITE TE 88 PG FP M12X40 ZINC UNI 5737	SCREW	VIS	SCHRAUBE	TORNILLO
#	M80A00130	C00143	VITE TE 88 PG FT M12X35 ZINC UNI 5739	SCREW	VIS	SCHRAUBE	TORNILLO
#	M80A00179	C00229	VITE TE 10.9 M16X1,5X45 ZINC F25	SCREW	VIS	SCHRAUBE	TORNILLO
#	M80A00292	C00644	VITE TSPEI 10.9 PG M12X40 ZINC UNI 5933	SCREW	VIS	SCHRAUBE	TORNILLO
#	M85A00030	C02107	DADO NORMALE 8 PG M16 UNI 5588 ZINC	NUT	BOULONS	NUT	DADO
#	M85A00050	C02305	DADO METALBLOC M12 X 1.75	NUT	BOULONS	NUT	DADO
#	M85A00078	C02605	DADO AUTOBLOC ALTO 8 M12 H=14 UNI 7473	NUT	BOULONS	NUT	DADO
#	M85A00080	C02607	DADO AUTOBLOC ALTO 8 M16 H=18 UNI 7473	NUT	BOULONS	NUT	DADO
#	M90A00010	C03007	RONDELLA PIANA D.17 DIN125-A ZINC.	WASHER	RONDELLE	UNTERLEGSCHIEBE	ARANDELLA
#	MB0A00022	C04533	SPINA ELASTICA D.8X45	SOCKET	GOUPILLE	STECKER	PASADOR
#	M30A00004	C23013	SUPPORTO UCF 207	SUPPORT	SUPPORT	STUTZE	APOYO
#	C05A03920	D01049	PIASTRINA POST. PER UCF 207	METAL STRAP	METAL DEPLOYE	BANDEISEN	PLATILLO
#	C00A00006	D01062	DIST. D.42,4 D.35,5 L.14	SPACER	ENTRETOISE	ABSTANDSTUECK	ESPACIADORES
#	C20A00052	E00922	TELAIO RULLO 205	FRAME	CHASSIS	RAHMEN	MARCO
#	C20A00053	E00923	TELAIO RULLO 230	FRAME	CHASSIS	RAHMEN	MARCO
#	C20A00054	E00924	TELAIO RULLO 250	FRAME	CHASSIS	RAHMEN	MARCO
#	C20A00055	E00925	TELAIO RULLO 300	FRAME	CHASSIS	RAHMEN	MARCO
#	C20A00087	E01063	TELAIO RASCHIATORE 205	FRAME	CHASSIS	RAHMEN	MARCO
#	C20A00088	E01064	TELAIO RASCHIATORE 230	FRAME	CHASSIS	RAHMEN	MARCO
#	C20A00089	E01065	TELAIO RASCHIATORE 250	FRAME	CHASSIS	RAHMEN	MARCO
#	C20A00090	E01066	TELAIO RASCHIATORE 300	FRAME	CHASSIS	RAHMEN	MARCO
#	C20A00172	E01393	RULLO SPIRAL SP3 205	ROLLER	ROULEAU	WALZE	RODILLO
#	C20A00173	E01394	RULLO SPIRAL SP3 250	ROLLER	ROULEAU	WALZE	RODILLO
#	C20A00174	E01395	RULLO SPIRAL SP3 300	ROLLER	ROULEAU	WALZE	RODILLO
#	C20A00374	E02273	TELAIO RULLO 180	FRAME	CHASSIS	RAHMEN	MARCO
#	C20A00375	E02274	TELAIO RASCHIATORE 180	FRAME	CHASSIS	RAHMEN	MARCO
#	C20A00698	E03708	TAMPONE CENTRALE RULLI DOPPI D.145X30	BUFFER	PRESSE	STOPFEN	TAMPON
#	C20A01375	E07755	TIRANTE RASCHIATORE M16 CON PIASTRINA	TIE ROD	TIRANT	ZUGSTANGE	TIRANTE
#	C20A02042	E12934	RULLO SPIRAL SP3 180	ROLLER	ROULEAU	WALZE	RODILLO
#	C20A02043	E12935	RULLO SPIRAL SP3 230	ROLLER	ROULEAU	WALZE	RODILLO
#	S00A00013	S02014	RULLO SPIRAL SP3 205 D.450 COMPLETO	ROLLER	ROULEAU	WALZE	RODILLO
#	S00A00014	S02015	RULLO SPIRAL SP3 250 D.450 COMPLETO	ROLLER	ROULEAU	WALZE	RODILLO
#	S00A00015	S02016	RULLO SPIRAL SP3 300 D.450 COMPLETO	ROLLER	ROULEAU	WALZE	RODILLO
#	S00A00017	S02017	RULLO SPIRAL SP3-180 D.450 COMPLETO	ROLLER	ROULEAU	WALZE	RODILLO
#	S00A00019	S02019	RULLO SPIRAL SP3 230 D.450 COMPLETO	ROLLER	ROULEAU	WALZE	RODILLO



**Rullo packer PK2**

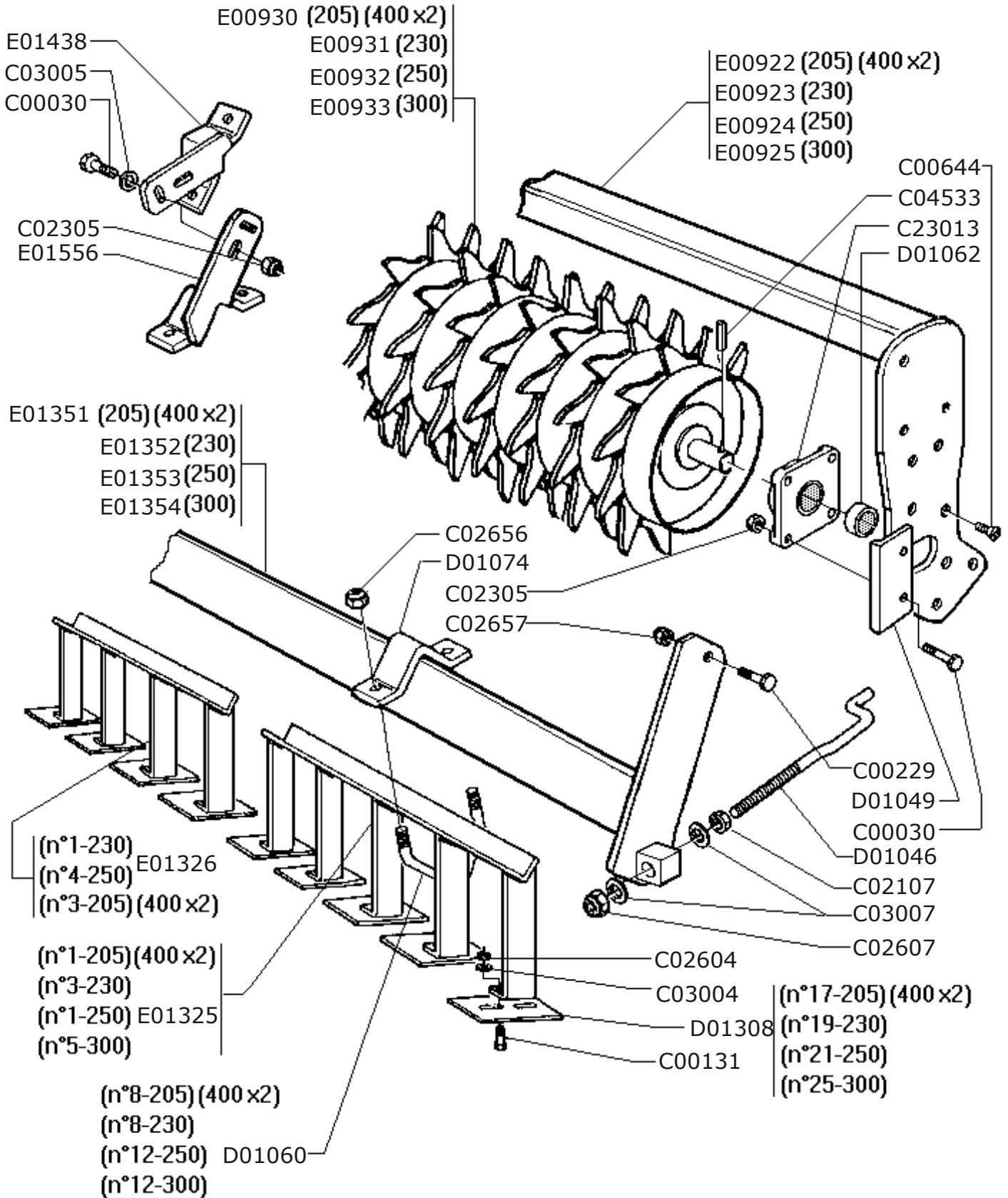
Packer roller PK2

Rouleau packer PK2

Packer walze PK2

Drawing Code: **100038\_1**

Accessories:



100038\_01



## Rullo packer PK2

Packer roller PK2

Rouleau packer PK2

Packer walze PK2

Drawing Code: **100038\_1**

Accessories:

N°	Code	Old.	Descrizione / Description	GB	FR	D	E
#	M80A00027	C00030	VITE TE 88 PG FP M12X40 ZINC UNI 5737	SCREW	VIS	SCHRAUBE	TORNILLO
#	M80A00118	C00131	VITE TE 88 PG FT M10X25 ZINC UNI 5739	SCREW	VIS	SCHRAUBE	TORNILLO
#	M80A00179	C00229	VITE TE 10.9 M16X1,5X45 ZINC F25	SCREW	VIS	SCHRAUBE	TORNILLO
#	M80A00292	C00644	VITE TSPEI 10.9 PG M12X40 ZINC UNI 5933	SCREW	VIS	SCHRAUBE	TORNILLO
#	M85A00030	C02107	DADO NORMALE 8 PG M16 UNI 5588 ZINC	NUT	BOULONS	NUT	DADO
#	M85A00050	C02305	DADO METALBLOC M12 X 1.75	NUT	BOULONS	NUT	DADO
#	M85A00077	C02604	DADO AUTOBLOC ALTO 8 M10 H=11.5 UNI 7473	NUT	BOULONS	NUT	DADO
#	M85A00080	C02607	DADO AUTOBLOC ALTO 8 M16 H=18 UNI 7473	NUT	BOULONS	NUT	DADO
#	M85A00088	C02656	DADO AUTOBLOC ALTO 8 M14X1,5 H=16 UNI 7473	NUT	BOULONS	NUT	DADO
#	M85A00089	C02657	DADO AUTOBLOC ALTO 8 M16X1,5 H=18 UNI 7473	NUT	BOULONS	NUT	DADO
#	M90A00007	C03004	RONDELLA PIANA D.10,5 DIN125-A ZINC.	WASHER	RONDELLE	UNTERLEGSSCHEIBE	ARANDELLA
#	M90A00008	C03005	RONDELLA PIANA D.13 DIN125-A ZINC.	WASHER	RONDELLE	UNTERLEGSSCHEIBE	ARANDELLA
#	M90A00010	C03007	RONDELLA PIANA D.17 DIN125-A ZINC.	WASHER	RONDELLE	UNTERLEGSSCHEIBE	ARANDELLA
#	MB0A00022	C04533	SPINA ELASTICA D.8X45	SOCKET	GOUPILLE	STECKER	PASADOR
#	M30A00004	C23013	SUPPORTO UCF 207	SUPPORT	SUPPORT	STUTZE	APOYO
#	C10A01094	D01046	TIRANTE RASCHIATORE M16	TIE ROD	TIRANT	ZUGSTANGE	TIRANTE
#	C05A03920	D01049	PIASTRINA POST. PER UCF 207	METAL STRAP	METAL DEPLOYE	BANDEISEN	PLATILLO
#	MD5A00003	D01060	CAVALLOTTO DIAGONALE M14 70X70	PIN	CAVALLIER	STIFT	CAVALLOTTI
#	C00A00006	D01062	DIST. D.42,4 D.35,5 L.14	SPACER	ENTRETOISE	ABSTANDSTUECK	ESPACIADORES
#	C10A01096	D01074	MORSETTO DIAGONALE 70X70***	TERMINAL	TERMINAL	TERMINAL	TERMINALES
#	MK0A00027	D01308	SPATOLA PULIRULLO PK ***	SPATULA	Spatules	SPACHTEL	ESPÁTULASS
#	C20A00052	E00922	TELAIO RULLO 205	FRAME	CHASSIS	RAHMEN	MARCO
#	C20A00053	E00923	TELAIO RULLO 230	FRAME	CHASSIS	RAHMEN	MARCO
#	C20A00054	E00924	TELAIO RULLO 250	FRAME	CHASSIS	RAHMEN	MARCO
#	C20A00055	E00925	TELAIO RULLO 300	FRAME	CHASSIS	RAHMEN	MARCO
#	C20A00056	E00930	RULLO PACKER PK2 205	ROLLER	ROULEAU	WALZE	RODILLO
#	C20A00057	E00931	RULLO PACKER PK2 230	ROLLER	ROULEAU	WALZE	RODILLO
#	C20A00058	E00932	RULLO PACKER PK2 250	ROLLER	ROULEAU	WALZE	RODILLO
#	C20A00059	E00933	RULLO PACKER PK2 300	ROLLER	ROULEAU	WALZE	RODILLO
#	C20A00159	E01325	PETTINE DA 5 ***	COMB	HERSE	KAMM	PEINE
#	C20A00161	E01326	PETTINE DA 4 ***	COMB	HERSE	KAMM	PEINE
#	C20A00166	E01351	TELAIO PORTA SPATOLE PK2 205	FRAME	CHASSIS	RAHMEN	MARCO
#	C20A00167	E01352	TELAIO PORTA SPATOLE PK2 230	FRAME	CHASSIS	RAHMEN	MARCO
#	C20A00168	E01353	TELAIO PORTA SPATOLE PK2 250	FRAME	CHASSIS	RAHMEN	MARCO
#	C20A00169	E01354	TELAIO PORTA SPATOLE PK2 300	FRAME	CHASSIS	RAHMEN	MARCO
#	C20A00185	E01438	TIRANTE CENTRALE ANTERIORE	TIE ROD	TIRANT	ZUGSTANGE	TIRANTE
#	C20A00232	E01556	TIRANTE CENTRALE POST. RULLO PK	TIE ROD	TIRANT	ZUGSTANGE	TIRANTE

# Rullo spuntoni P41

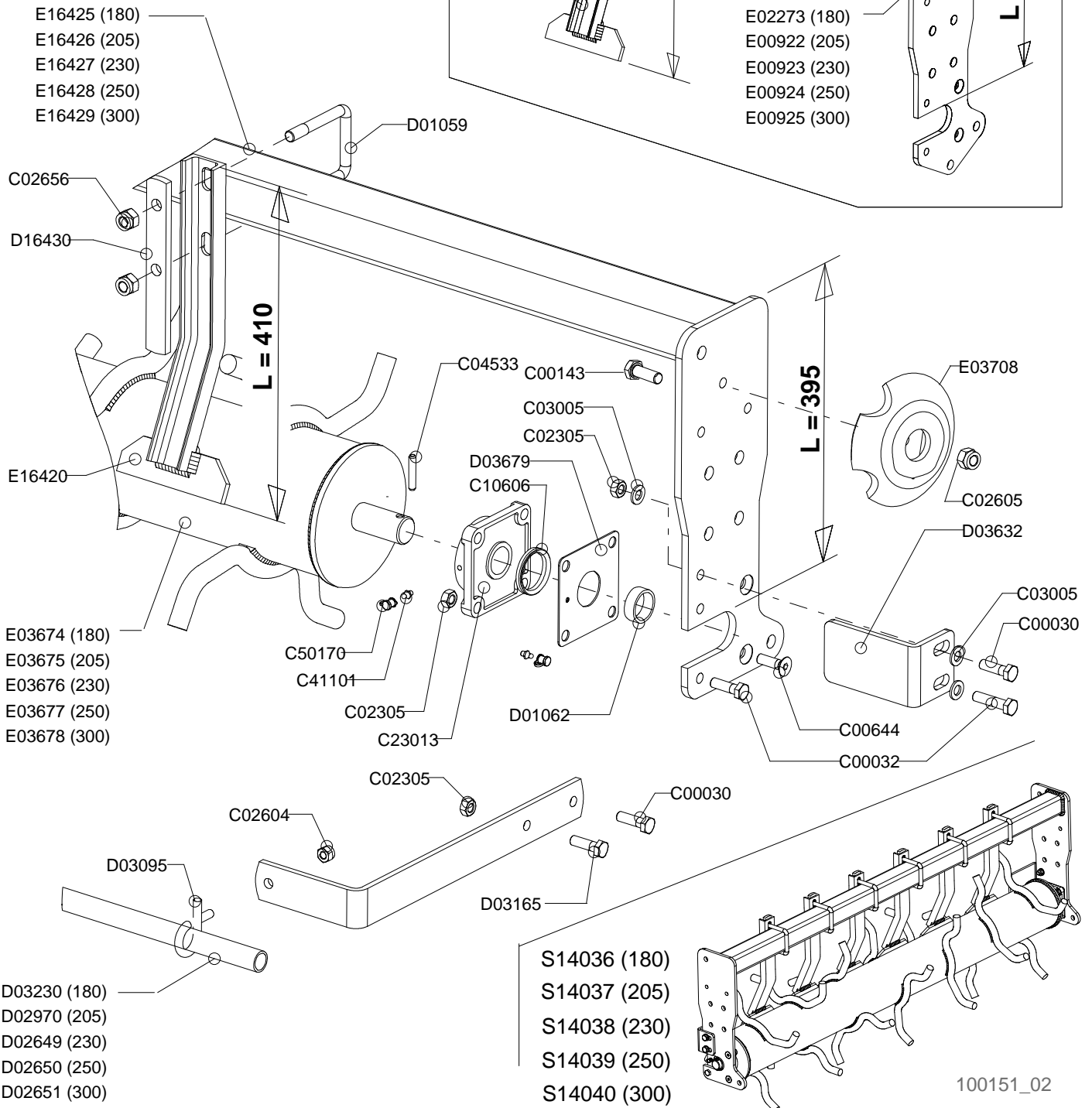
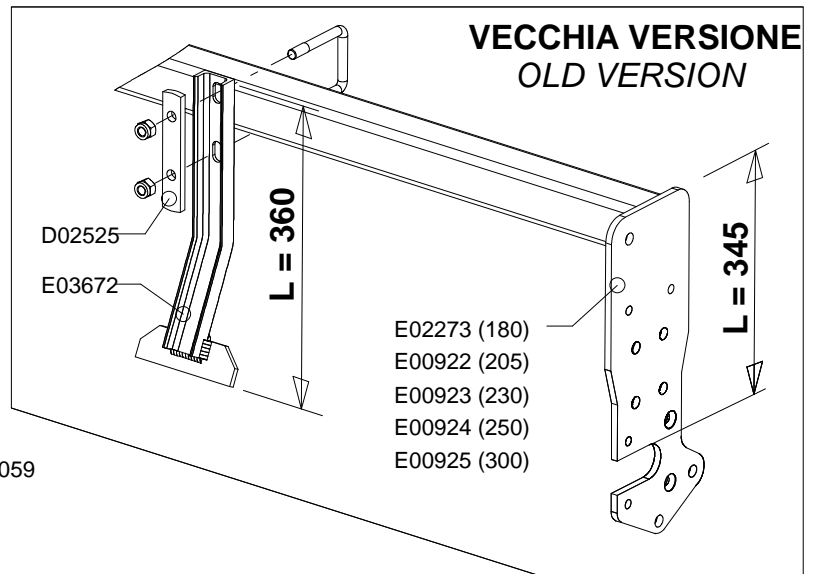
Spike roller P41

Rouleau a pointes P41

Zinken walze P41

Drawing Code: **100151\_2**

Accessories: S15A00026 - S15A00027 - S15A00028 - S15A00029 - S15A00030



100151\_02



# Rullo spuntoni P41

Spike roller P41

Rouleau a pointes P41

Zinken walze P41

Drawing Code: **100151\_2**

Accessories: S15A00026 - S15A00027 - S15A00028 - S15A00029 - S15A00030

N°	Code	Old.	Descrizione /Description	GB	FR	D	E
#	M80A00027	C00030	VITE TE 88 PG FP M12X40 ZINC UNI 5737	SCREW	VIS	SCHRAUBE	TORNILLO
#	M80A00029	C00032	VITE TE 88 PG FP M12X50 ZINC UNI 5737	SCREW	VIS	SCHRAUBE	TORNILLO
#	M80A00130	C00143	VITE TE 88 PG FT M12X35 ZINC UNI 5739	SCREW	VIS	SCHRAUBE	TORNILLO
#	M80A00292	C00644	VITE TSPEI 10.9 PG M12X40 ZINC UNI 5933	SCREW	VIS	SCHRAUBE	TORNILLO
#	M85A00050	C02305	DADO METALBLOC M12 X 1.75	NUT	BOULONS	NUT	DADO
#	M85A00077	C02604	DADO AUTOBLOC ALTO 8 M10 H=11.5 UNI 7473	NUT	BOULONS	NUT	DADO
#	M85A00078	C02605	DADO AUTOBLOC ALTO 8 M12 H=14 UNI 7473	NUT	BOULONS	NUT	DADO
#	M85A00088	C02656	DADO AUTOBLOC ALTO 8 M14X1,5 H=16 UNI 7473	NUT	BOULONS	NUT	DADO
#	M90A00008	C03005	RONDELLA PIANA D.13 DIN125-A ZINC.	WASHER	RONDELLE	UNTERLEGSCHIEBE	ARANDELLA
#	MB0A00022	C04533	SPINA ELASTICA D.8X45	SOCKET	GOUPILLE	STECKER	PASADOR
#	H10A00001	C10606	ANELLO V-RING D.INT.45X9 (CR400500)	RING	AMORTISSEUR	RING	ANILLO
#	M30A00004	C23013	SUPPORTO UCF 207	SUPPORT	SUPPORT	STUTZE	APOYO
#	MJ5A00001	C41101	INGRASSATORE M6X1 DIRITTO	GREASE NIPPLE	GRAISSOR	FETTBUCHSE	ENGRASADOR
#	G00A00001	C50170	PROTEZIONE INGRASSATORE D.6MM ROSSO	PROTECTION	PROTECTION	SCHUTZ	PROTECCIÓN
#	MD5A00002	D01059	CAVALLOTTO QUADRO M14 T70X70X105	PIN	CAVALLIER	STIFT	CAVALLOTTI
#	C00A00006	D01062	DIST. D.42,4 D.35,5 L.14	SPACER	ENTRETOISE	ABSTANDSTUECK	ESPACIADORES
#	C05A04133	D02525	PIATTO RINFORZO PULIRULLO P32 10mm ***	METAL STRAP	METAL DEPLOYE	BANDEISEN	PLATILLO
#	C00A00066	D02649	TUBO PROTEZIONE L=2160	TUBE	TUBE	ROHR	TUBO
#	C00A00067	D02650	TUBO PROTEZIONE L=2390	TUBE	TUBE	ROHR	TUBO
#	C00A00068	D02651	TUBO PROTEZIONE L=2770	TUBE	TUBE	ROHR	TUBO
#	C00A00093	D02970	TUBO PROTEZIONE L=1920	TUBE	TUBE	ROHR	TUBO
#	MH5A00041	D03095	GANCIO M10 PER TUBO D. 26,9	HOOK	ATTACHE	HAKEN	ENGANCHE
#	C10A01291	D03165	STAFFA PROT. POST. RULLO P4	BRACKET	SUPPORT	BUEGEL	SOPORTE
#	C00A00108	D03230	TUBO PROTEZIONE L=1700	TUBE	TUBE	ROHR	TUBO
#	C10A01360	D03632	PULIRULLO SPUNTONI ESTERNO P2/P-5/P-41	ROLLER SCRAPER	DECROTTEUR ROULEAU	AMALZENABSTREIFER	POLIRULLO
#	C05A04339	D03679	SCHERMO PROTEZIONE UCF-207 2MM	SCREEN	ECRAN	SCHIRM	PANTALLA
#	C05A08159	D16430	PIATTO RINFORZO PULIRULLO P41	METAL STRAP	METAL DEPLOYE	BANDEISEN	PLATILLO
#	C20A00052	E00922	TELAIO RULLO 205	FRAME	CHASSIS	RAHMEN	MARCO
#	C20A00053	E00923	TELAIO RULLO 230	FRAME	CHASSIS	RAHMEN	MARCO
#	C20A00054	E00924	TELAIO RULLO 250	FRAME	CHASSIS	RAHMEN	MARCO
#	C20A00055	E00925	TELAIO RULLO 300	FRAME	CHASSIS	RAHMEN	MARCO
#	C20A00374	E02273	TELAIO RULLO 180	FRAME	CHASSIS	RAHMEN	MARCO
#	C20A00684	E03672	PULIRULLO P-41 ***	ROLLER SCRAPER	DECROTTEUR ROULEAU	AMALZENABSTREIFER	POLIRULLO
#	C20A00685	E03674	RULLO P41-180 ***	ROLLER	ROULEAU	WALZE	RODILLO
#	C20A00686	E03675	RULLO P41-205 00***	ROLLER	ROULEAU	WALZE	RODILLO
#	C20A00687	E03676	RULLO P41-230***	ROLLER	ROULEAU	WALZE	RODILLO
#	C20A00688	E03677	RULLO P41-250***	ROLLER	ROULEAU	WALZE	RODILLO
#	C20A00689	E03678	RULLO P41-300***	ROLLER	ROULEAU	WALZE	RODILLO
#	C20A00698	E03708	TAMPONE CENTRALE RULLI DOPPI D.145X30	BUFFER	PRESSE	STOPFEN	TAMPON
#	C20A02897	E16420	RASCHIATORE PULIRULLO SPUNTONI P41	SCRAPER	SCRAPERS	ABSTREIFER	RASCADORES
#	C20A02898	E16425	TELAIO RULLO SPUNTONI P41-180	FRAME	CHASSIS	RAHMEN	MARCO
#	C20A02899	E16426	TELAIO RULLO SPUNTONI P41-205	FRAME	CHASSIS	RAHMEN	MARCO
#	C20A02900	E16427	TELAIO RULLO SPUNTONI P41-230	FRAME	CHASSIS	RAHMEN	MARCO
#	C20A02901	E16428	TELAIO RULLO SPUNTONI P41-250	FRAME	CHASSIS	RAHMEN	MARCO
#	C20A02902	E16429	TELAIO RULLO SPUNTONI P41-300	FRAME	CHASSIS	RAHMEN	MARCO
#	S15A00026	S14036	RULLO SPUNTONI P41-180 COMPLETO	ROLLER	ROULEAU	WALZE	RODILLO
#	S15A00027	S14037	RULLO SPUNTONI P41-205 COMPLETO***	ROLLER	ROULEAU	WALZE	RODILLO
#	S15A00028	S14038	RULLO SPUNTONI P41-230 COMPLETO***	ROLLER	ROULEAU	WALZE	RODILLO
#	S15A00029	S14039	RULLO SPUNTONI P41-250 COMPLETO***	ROLLER	ROULEAU	WALZE	RODILLO

Copyright © 2009 Alpego s.p.a. ®

Tutti i diritti sono riservati. È vietata espressamente la ristampa o l'uso non autorizzato senza permesso scritto dalla Alpego s.p.a.

Tous droits réservés. Toute réimpression ou utilisation non autorisée sans la permission écrite de la Alpego s.p.a. est formellement interdite

Alle Rechte vorbehalten. Nachdruck, Vervielfältigung und Verbreitung, auch auszugsweise, ist ohne schriftliche Genehmigung der Alpego s.p.a.

Al rights reserved. Any reprinting or unauthorized use without the written permission of Alpego s.p.a. is expressly prohibited

Todos los derechos reservados. Toda reproducción o uso no autorizado sin el consentimiento escrito de Alpego s.p.a. quedan expresamente prohibidos

09/03/2015

# Rullo spuntoni P41

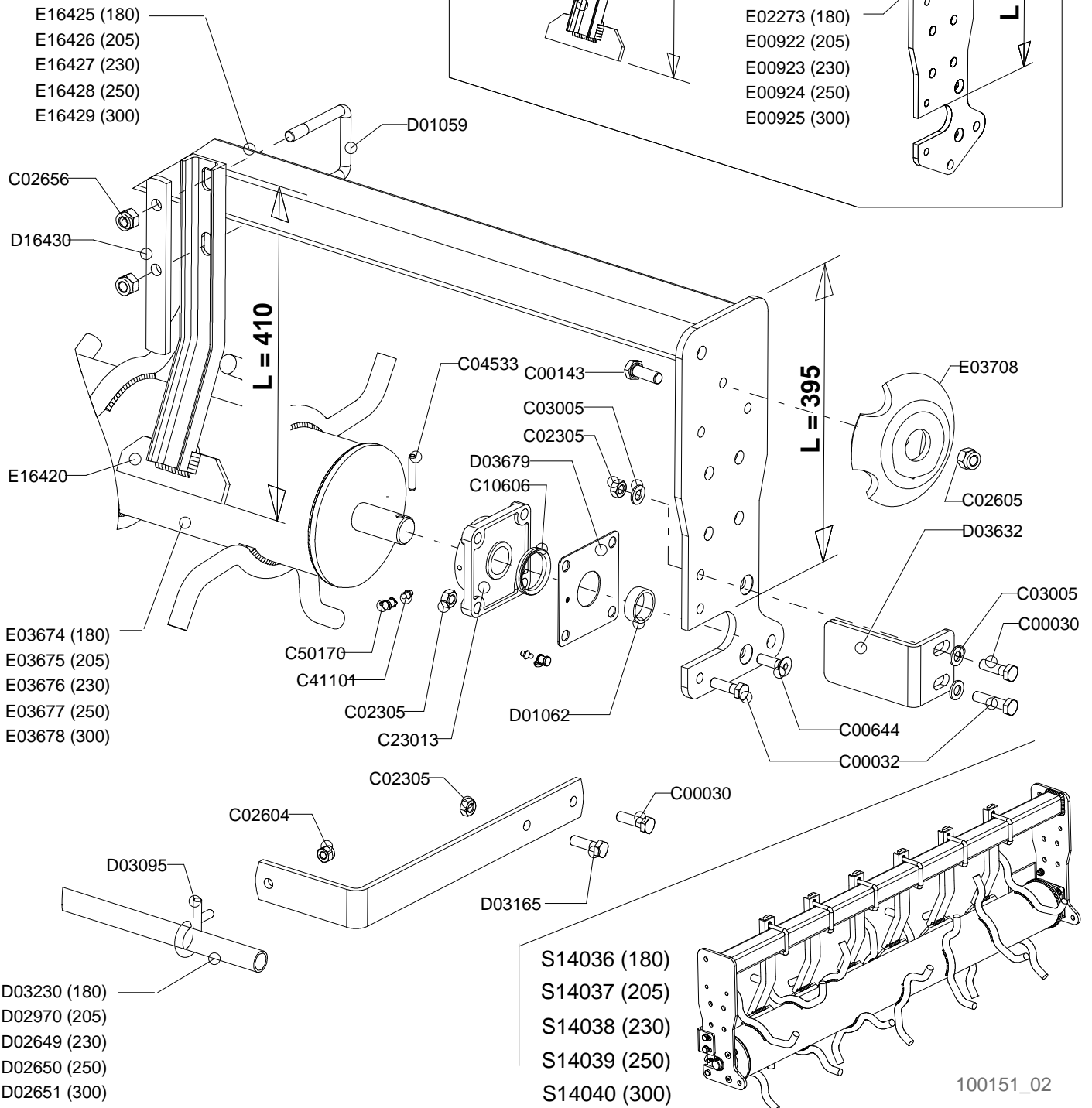
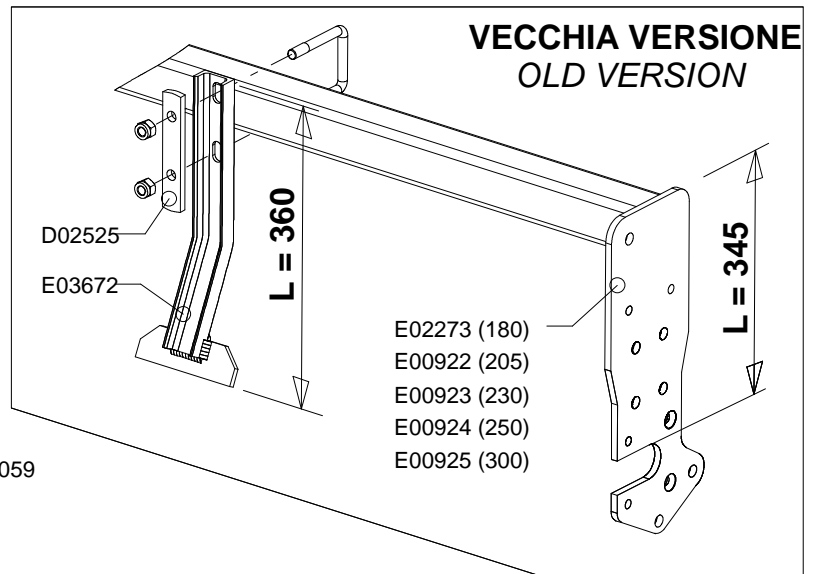
Spike roller P41

Rouleau a pointes P41

Zinken walze P41

Drawing Code: **100151\_2**

Accessories: S15A00026 - S15A00027 - S15A00028 - S15A00029 - S15A00030



100151\_02





## Rullo spuntoni P41

Spike roller P41

Rouleau a pointes P41

Zinken walze P41

Drawing Code: **100151\_2**

Accessories: S15A00026 - S15A00027 - S15A00028 - S15A00029 - S15A00030

N°	Code	Old.	Descrizione / Description
#	S15A00030	S14040	RULLO SPUNTONI P41-300 COMPLETO***

GB	FR	D	E
ROLLER	ROULEAU	WALZE	RODILLO

## Rullo spuntoni P4

Spike roller P4

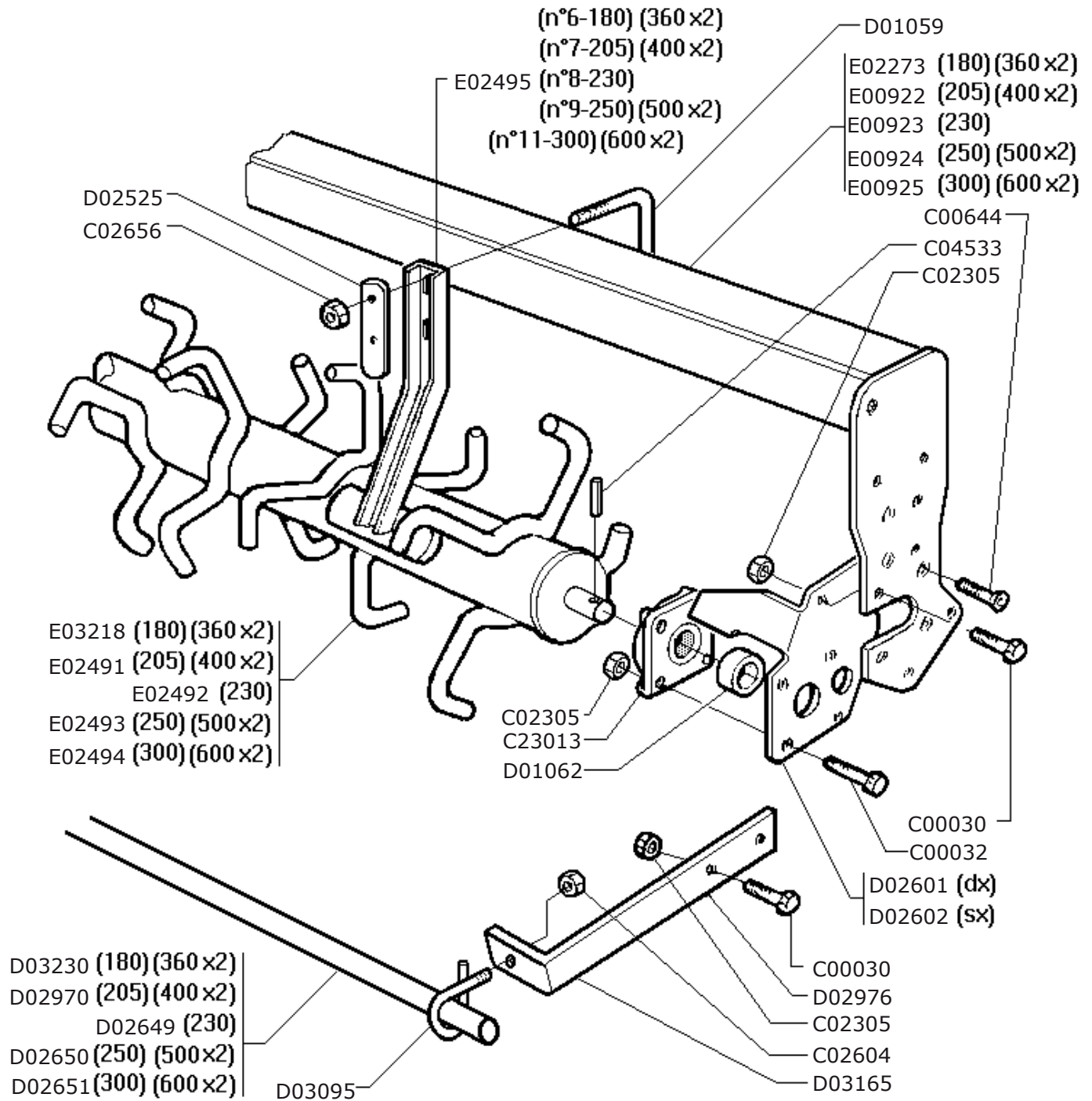
Rouleau a pointes P4

Zinken walze P4

Drawing Code:

**100018\_0**

Accessories:



100018\_00



# Rullo spuntoni P4

Spike roller P4

Rouleau a pointes P4

Zinken walze P4

Drawing Code:

**100018\_0**

Accessories:

N°	Code	Old.	Descrizione / Description
#	M80A00027	C00030	VITE TE 88 PG FP M12X40 ZINC UNI 5737
#	M80A00029	C00032	VITE TE 88 PG FP M12X50 ZINC UNI 5737
#	M80A00292	C00644	VITE TSPEI 10.9 PG M12X40 ZINC UNI 5933
#	M85A00050	C02305	DADO METALBLOC M12 X 1.75
#	M85A00077	C02604	DADO AUTOBLOC ALTO 8 M10 H=11.5 UNI 7473
#	M85A00088	C02656	DADO AUTOBLOC ALTO 8 M14X1,5 H=16 UNI 7473
#	MB0A00022	C04533	SPINA ELASTICA D.8X45
#	M30A00004	C23013	SUPPORTO UCF 207
#	MD5A00002	D01059	CAVALLOTTO QUADRO M14 T70X70X105
#	C00A00006	D01062	DIST. D.42,4 D.35,5 L.14
#	C05A04133	D02525	PIATTO RINFORZO PULIRULLO P32 10mm ***
#	C10A01217	D02601	PROLUNGA DESTRA RULLO P4
#	C10A01218	D02602	PROLUNGA SINISTRA RULLO P4
#	C00A00066	D02649	TUBO PROTEZIONE L=2160
#	C00A00067	D02650	TUBO PROTEZIONE L=2390
#	C00A00068	D02651	TUBO PROTEZIONE L=2770
#	C00A00093	D02970	TUBO PROTEZIONE L=1920
#	C10A01264	D02976	SUPPORTO PROT. POST. RULLO P4
#	MH5A00041	D03095	GANCIO M10 PER TUBO D. 26,9
#	C10A01291	D03165	STAFFA PROT. POST. RULLO P4
#	C00A00108	D03230	TUBO PROTEZIONE L=1700
#	C20A00052	E00922	TELAIO RULLO 205
#	C20A00053	E00923	TELAIO RULLO 230
#	C20A00054	E00924	TELAIO RULLO 250
#	C20A00055	E00925	TELAIO RULLO 300
#	C20A00374	E02273	TELAIO RULLO 180
#	C20A00451	E02491	RULLO P4-205 ***
#	C20A00452	E02492	RULLO P4-230
#	C20A00453	E02493	RULLO P4-250 ***
#	C20A00454	E02494	RULLO P4-300 ***
#	C20A00455	E02495	PULIRULLO P-4
#	C20A00575	E03218	RULLO P4-180

GB	FR	D	E
SCREW	VIS	SCHRAUBE	TORNILLO
SCREW	VIS	SCHRAUBE	TORNILLO
SCREW	VIS	SCHRAUBE	TORNILLO
NUT	BOULONS	NUT	DADO
NUT	BOULONS	NUT	DADO
NUT	BOULONS	NUT	DADO
SOCKET	GOUPILLE	STECKER	PASADOR
SUPPORT	SUPPORT	STUTZE	APOYO
PIN	CAVALLIER	STIFT	CAVALLOTTI
SPACER	ENTRETOISE	ABSTANDSTUECK	ESPACIADORES
METAL STRAP	METAL DEPLOYE	BANDEISEN	PLATILLO
EXTENSION	EXTENSION	VERLAENGERUNG	EXTENSIÓN
EXTENSION	EXTENSION	VERLAENGERUNG	EXTENSIÓN
TUBE	TUBE	ROHR	TUBO
TUBE	TUBE	ROHR	TUBO
TUBE	TUBE	ROHR	TUBO
TUBE	TUBE	ROHR	TUBO
SUPPORT	SUPPORT	STUTZE	APOYO
HOOK	ATTACHE	HAKEN	ENGANCHE
BRACKET	SUPPORT	BUEGEL	SOPORTE
TUBE	TUBE	ROHR	TUBO
FRAME	CHASSIS	RAHMEN	MARCO
FRAME	CHASSIS	RAHMEN	MARCO
FRAME	CHASSIS	RAHMEN	MARCO
FRAME	CHASSIS	RAHMEN	MARCO
FRAME	CHASSIS	RAHMEN	MARCO
ROLLER	ROULEAU	WALZE	RODILLO
ROLLER	ROULEAU	WALZE	RODILLO
ROLLER	ROULEAU	WALZE	RODILLO
ROLLER	ROULEAU	WALZE	RODILLO
ROLLER SCRAPER	DECROTTEUR ROULEAU	AMALZENABSTREIFER	POLIRULO
ROLLER	ROULEAU	WALZE	RODILLO

**Rullo gabbia G4**

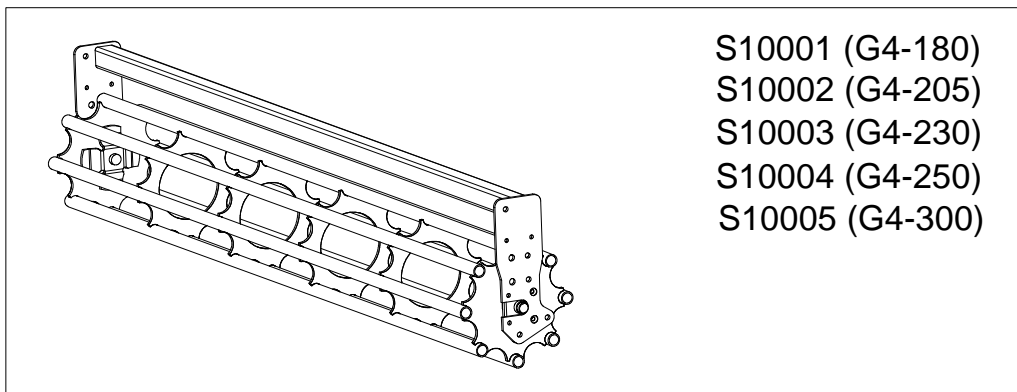
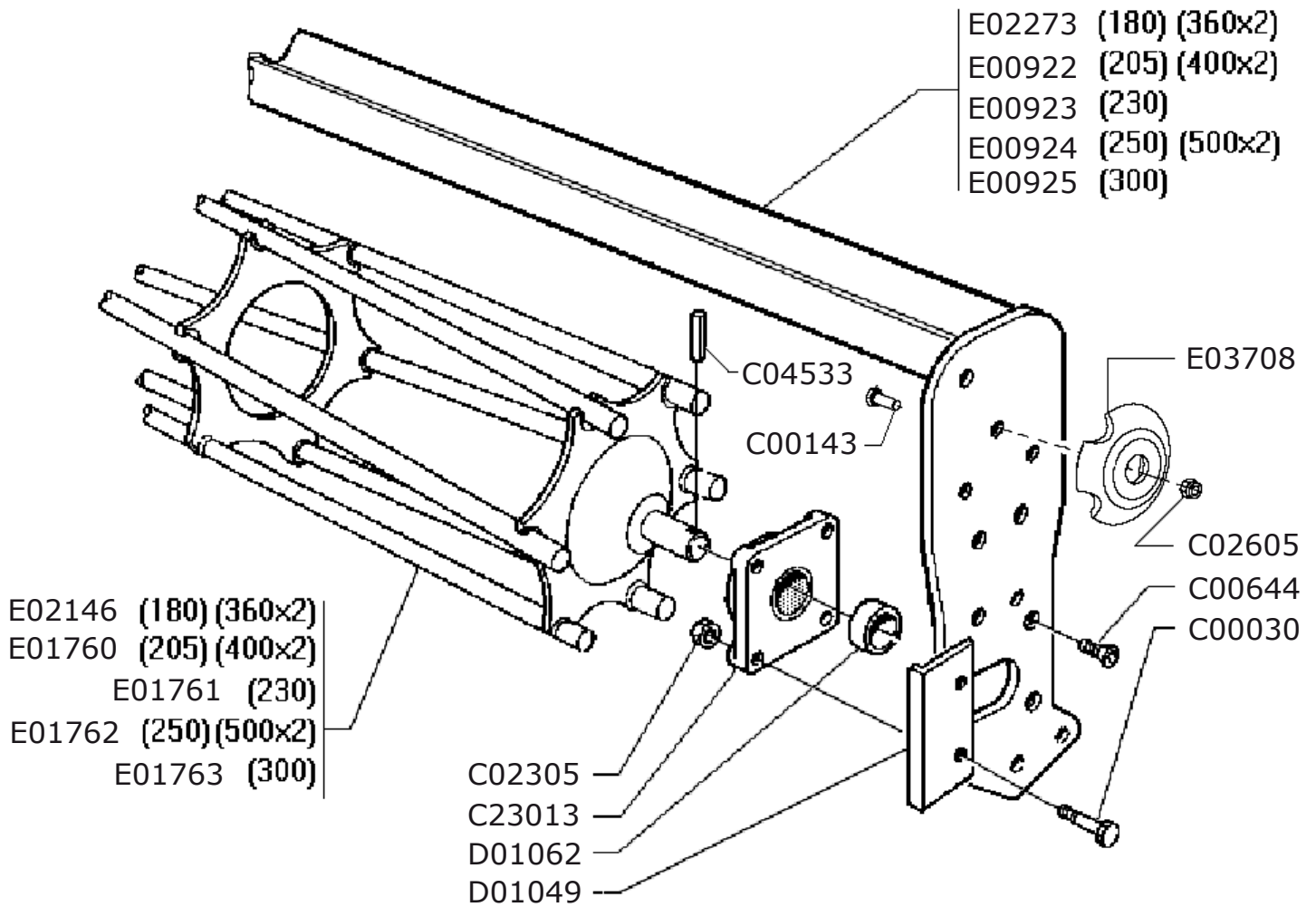
Roller cage G4

Rouleau cage G4

Stab walze G4

Drawing Code: **100117\_0**

Accessories: S05A00012 - S05A00013 - S05A00014 - S05A00015 - S05A00016



100117\_00



## Rullo gabbia G4

Roller cage G4

Rouleau cage G4

Stab walze G4

Drawing Code:

**100117\_0**

Accessories:

S05A00012 - S05A00013 - S05A00014 - S05A00015 - S05A00016

N°	Code	Old.	Descrizione /Description
#	M80A00027	C00030	VITE TE 88 PG FP M12X40 ZINC UNI 5737
#	M80A00130	C00143	VITE TE 88 PG FT M12X35 ZINC UNI 5739
#	M80A00292	C00644	VITE TSPEI 10.9 PG M12X40 ZINC UNI 5933
#	M85A00050	C02305	DADO METALBLOC M12 X 1.75
#	M85A00078	C02605	DADO AUTOBLOC ALTO 8 M12 H=14 UNI 7473
#	MB0A00022	C04533	SPINA ELASTICA D.8X45
#	M30A00004	C23013	SUPPORTO UCF 207
#	C05A03920	D01049	PIASTRINA POST. PER UCF 207
#	C00A00006	D01062	DIST. D.42,4 D.35,5 L.14
#	C20A00052	E00922	TELAIO RULLO 205
#	C20A00053	E00923	TELAIO RULLO 230
#	C20A00054	E00924	TELAIO RULLO 250
#	C20A00055	E00925	TELAIO RULLO 300
#	C20A00261	E01760	RULLO GABBIA G4-205
#	C20A00262	E01761	RULLO GABBIA G4-230
#	C20A00263	E01762	RULLO GABBIA G4-250
#	C20A00264	E01763	RULLO GABBIA G4-300
#	C20A00350	E02146	RULLO GABBIA G4-180
#	C20A00374	E02273	TELAIO RULLO 180
#	C20A00698	E03708	TAMPONE CENTRALE RULLI DOPPI D.145X30
#	S05A00012	S10001	RULLO GABBIA G4-180 COMPLETO
#	S05A00013	S10002	RULLO GABBIA G4-205 COMPLETO
#	S05A00014	S10003	RULLO GABBIA G4-230 COMPLETO
#	S05A00015	S10004	RULLO GABBIA G4-250 COMPLETO
#	S05A00016	S10005	RULLO GABBIA G4-300 COMPLETO

GB	FR	D	E
SCREW	VIS	SCHRAUBE	TORNILLO
SCREW	VIS	SCHRAUBE	TORNILLO
SCREW	VIS	SCHRAUBE	TORNILLO
NUT	BOULONS	NUT	DADO
NUT	BOULONS	NUT	DADO
SOCKET	GOUPILLE	STECKER	PASADOR
SUPPORT	SUPPORT	STUTZE	APOYO
METAL STRAP	METAL DEPLOYE	BANDEISEN	PLATILLO
SPACER	ENTRETOISE	ABSTANDSTUECK	ESPACIADORES
FRAME	CHASSIS	RAHMEN	MARCO
FRAME	CHASSIS	RAHMEN	MARCO
FRAME	CHASSIS	RAHMEN	MARCO
FRAME	CHASSIS	RAHMEN	MARCO
ROLLER	ROULEAU	WALZE	RODILLO
ROLLER	ROULEAU	WALZE	RODILLO
ROLLER	ROULEAU	WALZE	RODILLO
ROLLER	ROULEAU	WALZE	RODILLO
ROLLER	ROULEAU	WALZE	RODILLO
ROLLER	ROULEAU	WALZE	RODILLO
FRAME	CHASSIS	RAHMEN	MARCO
BUFFER	PRESSE	STOPFEN	TAMPON
ROLLER	ROULEAU	WALZE	RODILLO
ROLLER	ROULEAU	WALZE	RODILLO
ROLLER	ROULEAU	WALZE	RODILLO
ROLLER	ROULEAU	WALZE	RODILLO
ROLLER	ROULEAU	WALZE	RODILLO



**Coppia rompitraccia (80x80)**

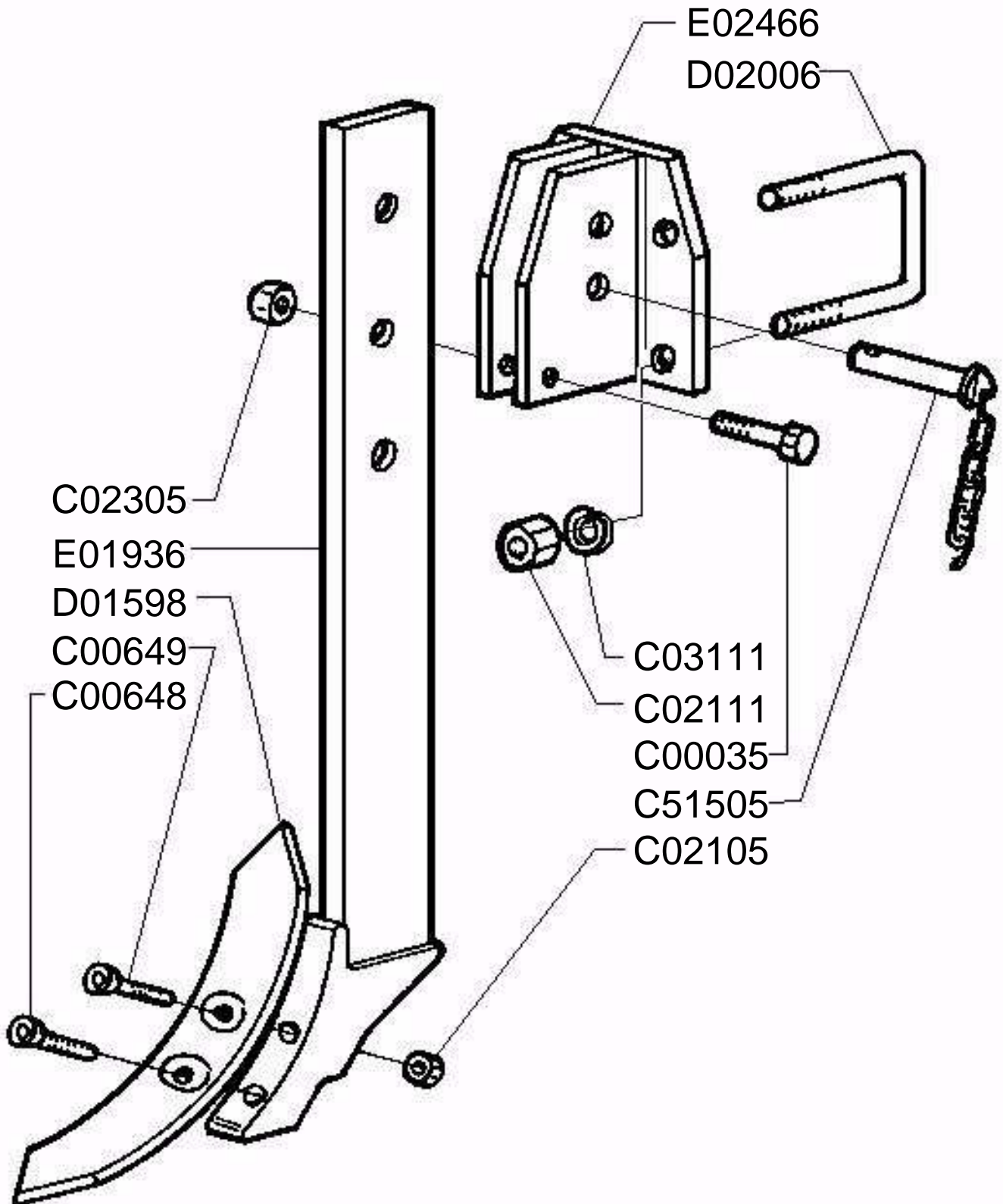
Wheel track eradicators (80x80)

Dents extirpatrices avant (80x80)

Paar spurlockerer (80x80)

Drawing Code: **100104\_0**

Accessories: S91A00009



100104\_00



## Coppia rompitraccia (80x80)

Wheel track eradicators (80x80)

Dents extirpatrices avant (80x80)

Paar spurlockerer (80x80)

Drawing Code:

100104\_0

Accessories:

S91A00009

N°	Code	Old.	Descrizione / Description
#	M80A00032	C00035	VITE TE 88 PG FP M12X70 ZINC UNI 5737
#	M80A00296	C00648	VITE TSPEI 10.9 PG M12X60 UNI 5933
#	M80A00297	C00649	VITE TSPEI 10.9 PG M12X70 UNI 5933
#	M85A00028	C02105	DADO NORMALE 8 PG M12 UNI 5588
#	M85A00034	C02111	DADO NORMALE 8 PG M18 UNI 5588 ZINC
#	M85A00050	C02305	DADO METALBLOC M12 X 1.75
#	M90A00041	C03111	RONDELLA GROWER D.18 DIN 127
#	M15A00004	C51505	PERNO 3P. D.19 CON CAT.
#	MK0A00038	D01598	VOMERE ROMPITRACCIA 60X12X300
#	MD5A00007	D02006	CAVALLOTTO QUADRO M18X80X135
#	C20A00322	E01936	BRACCIO ROMPITRACCIA 80X25 DF ***
#	C20A00440	E02466	STAFFA GUIDA ROMPITRACCIA TUBO 80X80

GB	FR	D	E
SCREW	VIS	SCHRAUBE	TORNILLO
SCREW	VIS	SCHRAUBE	TORNILLO
SCREW	VIS	SCHRAUBE	TORNILLO
NUT	BOULONS	NUT	DADO
NUT	BOULONS	NUT	DADO
NUT	BOULONS	NUT	DADO
WASHER	RONDELLE	UNTERLEGSCHIEBE	ARANDELLA
PIN	PIVOT	STIFT	PIN
PLOUGHSHARE	SOC	PFLUGSCHAR	REJA
PIN	CAVALLIER	STIFT	CAVALLOTTI
ARM	BRAS	ARM	BRAZO
BRACKET	SUPPORT	BUEGEL	SOPORTE