

## Coltivatori rotanti

## LH-KH



### **ALPEGO s.p.a.**

*Sede Amministrativa:*

**Via Torri di Confine, 6 36053 GAMBELLARA (VICENZA) - ITALY**

*Sede Legale:*

**Via Giovanni e Giuseppe Cenzato, 9 36045 LONIGO (VICENZA) - ITALY**

Capitale sociale €2.000.000 i.v.

Cod. Fisc. / Part. IVA IT02009840246

R.E.A. 199795/VI/1996

Reg. Imp.VI N° 22374/VI/1996

N. Mecc. VI 011754

[www.alpego.com](http://www.alpego.com)

Tel +39 0444/64.61.00

Fax +39 0444/64.61.99

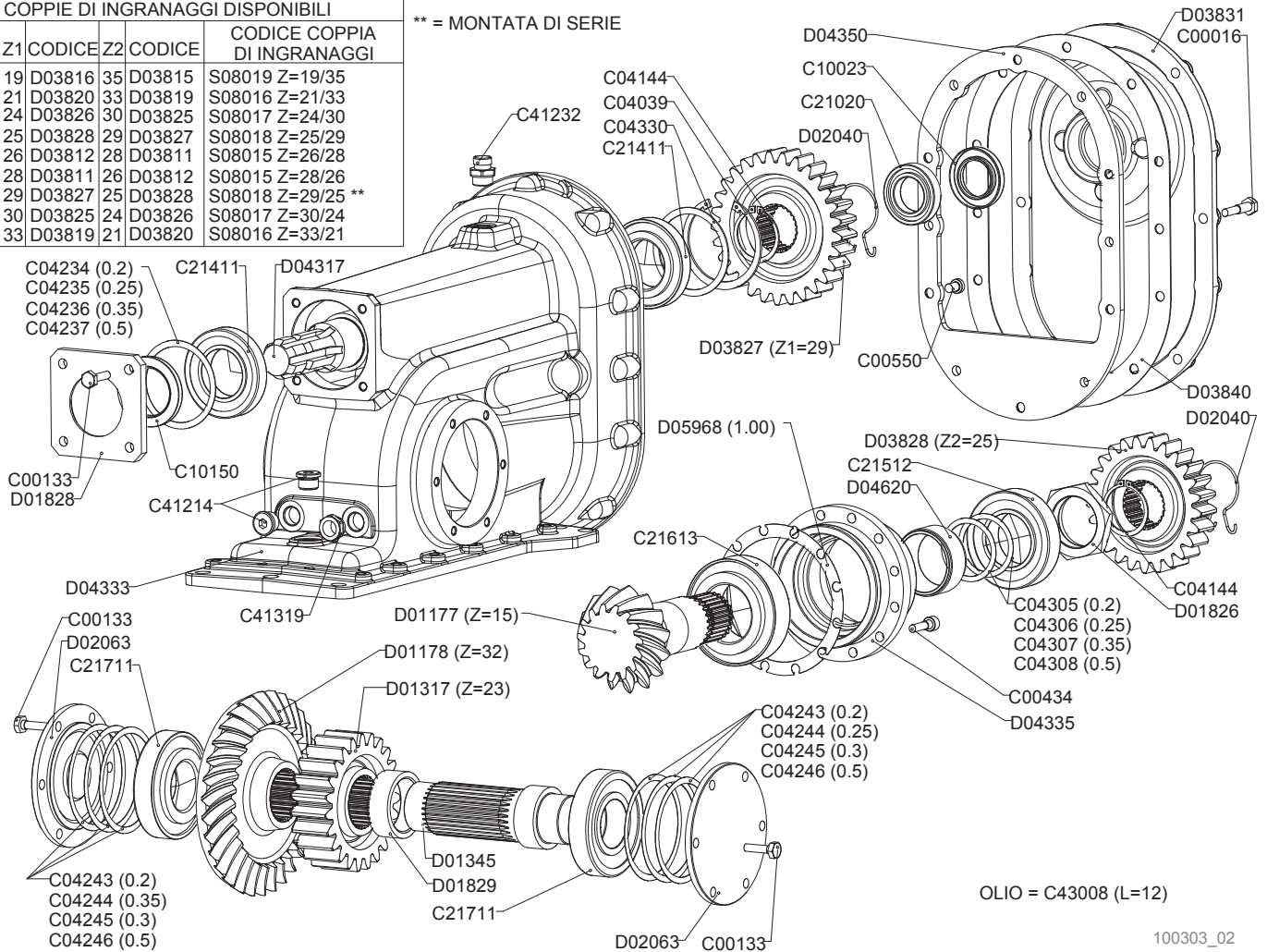
e-mail: [info@alpego.com](mailto:info@alpego.com)

Copyright © 2009 Alpego s.p.a. ®

Tutti i diritti sono riservati. È vietata espressamente la ristampa o l'uso non autorizzato senza permesso scritto dalla Alpego s.p.a.  
Tous droits réservés. Toute réimpression ou utilisation non autorisée sans la permission écrite de la Alpego s.p.a. est formellement interdite.  
Alle Rechte vorbehalten. Nachdruck, Vervielfältigung und Verbreitung, auch auszugsweise, ist ohne schriftliche Genehmigung der Alpego s.p.a.  
All rights reserved. Any reprinting or unauthorized use without the written permission of Alpego s.p.a. is expressly prohibited.  
Todos los derechos reservados. Toda reproducción o uso no autorizado sin el consentimiento escrito de Alpego s.p.a. quedan expresamente prohibidos.

COPPIE DI INGRANAGGI DISPONIBILI				
Z1	CODICE	Z2	CODICE	CODICE COPPIA DI INGRANAGGI
19	D03816	35	D03815	S08019 Z=19/35
21	D03820	33	D03819	S08016 Z=21/33
24	D03826	30	D03825	S08017 Z=24/30
25	D03828	29	D03827	S08018 Z=25/29
26	D03812	28	D03811	S08015 Z=26/28
28	D03811	26	D03812	S08015 Z=28/26
29	D03827	25	D03828	S08018 Z=29/25 **
30	D03825	24	D03826	S08017 Z=30/24
33	D03819	21	D03820	S08016 Z=33/21

\*\* = MONTATA DI SERIE



100303\_02



## Testa cambio

Gear box head

Tete boite

Wechselgetriebe

Drawing Code: **100303\_2**

Accessories:

N°	Code	Old.	Descrizione / Description
#	M80A00013	C00016	VITE TE 88 PG FP M10X45 ZINC UNI 5737
#	M80A00121	C00133	VITE TE 88 PG FT M10X35 ZINC UNI 5739
#	M80A00247	C00434	VITE TCEI PG M10X35 ZINC UNI 5931
#	M80A00270	C00550	VITE TCEI 8.8 T/RIB. M10X16 DIN7984 ZINC
#	MA0A00014	C04039	SEEGER FORO D.100 UNI 7437
#	MA0A00044	C04144	SEEGER ALBERO D.54 UNI 7435
#	MA5A00034	C04234	SPESSORE REG. 85.3X99.8X0.2
#	MA5A00035	C04235	SPESSORE REG. 85.3X99.8X0.25
#	MA5A00036	C04236	SPESSORE REG. 85.3X99.8X0.35
#	MA5A00037	C04237	SPESSORE REG. 85.3X99.8X0.5
#	MA5A00043	C04243	SPESSORE REG. 105.5X119.5X0.2
#	MA5A00044	C04244	SPESSORE REG. 105.5X119.5X0.25
#	MA5A00045	C04245	SPESSORE REG. 105.5X119.5X0.3
#	MA5A00046	C04246	SPESSORE REG. 105.5X119.5X0.5
#	MA5A00096	C04305	SPESSORE REG. 60X72X0.20
#	MA5A00097	C04306	SPESSORE REG. 60X72X0.25
#	MA5A00098	C04307	SPESSORE REG. 60X72X0.35
#	MA5A00099	C04308	SPESSORE REG. 60X72X0.5
#	MA5A00106	C04330	RALLA REG. 85.3X99.7X2
#	H00A00011	C10023	PARAOLIO BA D.40X68X10
#	H00A00063	C10150	PARAOLIO BASL D.55X80X8
#	M20A00011	C21020	CUSCINETTO 6008 40X68X15
#	M20A00063	C21411	CUSCINETTO 30211 55X100X22.75
#	M20A00075	C21512	CUSCINETTO 32212 60X110X29.75
#	M20A00085	C21613	CUSCINETTO 33213 65X120X41
#	M20A00091	C21711	CUSCINETTO 30311 55X120X31.5
#	H45A00007	C41214	TAPPO + GUARNIZIONE SCARICO M22X1.5 (41 B)
#	H65A00004	C41232	TAPPO + GUARNIZ SFIATO M22X1,5 (31.A) LABI
#	H60A00006	C41319	SPIA LIVELLO GLASS M22X1.5
#	L20A00004	C43008	OLIO SINT. GLOBAL MULTIGEAR CBS-A
#	M40A00003	D01177	PIGNONE CONICO ELIC. Z=15 DE/LE
#	M40A00004	D01178	CORONA CONICA ELIC. Z=32 DF/LE
#	M40A00009	D01317	INGRANAGGIO Z=23 LE-LH-FH
#	M45A00011	D01345	ALBERO PORTA CORONA LE
#	M95A00023	D01826	GHIERA CON COLLARE M60x1,5
#	C15A00091	D01828	COPERCHIO INGRESSO LE/DF 120X120***
#	C15A00092	D01829	DIST. D.75 D.60 L.26***
#	MF5A00013	D02040	MOLLA DI RITEGNO INGR.LE/DF CAVA D.51.5
#	C15A00123	D02063	COPERCHIO D.160 CORONA LE***
#	M40A00058	D03811	INGRAN. CAMBIO CS Z=28 (COPIA 26/28)***
#	M40A00059	D03812	INGRAN. CAMBIO CS Z=26 (COPIA 26/28)***
#	M40A00060	D03815	INGRAN. CAMBIO CS Z=35 (COPIA 35/19)***
#	M40A00061	D03816	INGRAN. CAMBIO CS Z=19 (COPIA 35/19)***
#	M40A00062	D03819	INGRAN. CAMBIO CS Z=33 (COPIA 33/21)***
#	M40A00063	D03820	INGRAN. CAMBIO CS Z=21(COPIA 33/21)***
#	M40A00066	D03825	INGRAN. CAMBIO CS Z=30 (COPIA 30/24)***
#	M40A00067	D03826	INGRAN. CAMBIO CS Z=24 (COPIA 30/24)***
#	M40A00068	D03827	INGRAN. CAMBIO CS Z=29 (COPIA 29/25)***
#	M40A00069	D03828	INGRAN. CAMBIO CS Z=25 (COPIA 29/25)***

GB	FR	D	E
SCREW	VIS	SCHRAUBE	TORNILLO
SCREW	VIS	SCHRAUBE	TORNILLO
SCREW	VIS	SCHRAUBE	TORNILLO
SCREW	VIS	SCHRAUBE	TORNILLO
SEEGER	SEEGER	SEEGER	SEEGER
SEEGER	SEEGER	SEEGER	SEEGER
THICKNESS	CALES	DICKE	ESPEJOR
THICKNESS	CALES	DICKE	ESPEJOR
THICKNESS	CALES	DICKE	ESPEJOR
THICKNESS	CALES	DICKE	ESPEJOR
THICKNESS	CALES	DICKE	ESPEJOR
THICKNESS	CALES	DICKE	ESPEJOR
THICKNESS	CALES	DICKE	ESPEJOR
THICKNESS	CALES	DICKE	ESPEJOR
THICKNESS	CALES	DICKE	ESPEJOR
THICKNESS	CALES	DICKE	ESPEJOR
THICKNESS	CALES	DICKE	ESPEJOR
THICKNESS	CALES	DICKE	ESPEJOR
FIFTH WHEEL	RONDELLE	DREHPLATTE	RAYA
SEALING RING	JOINT SPI	OELABDICHTUNG	PARAOLIO
SEALING RING	JOINT SPI	OELABDICHTUNG	PARAOLIO
BEARING	ROULEMENT	KUGELLAGER	COJINETE
BEARING	ROULEMENT	KUGELLAGER	COJINETE
BEARING	ROULEMENT	KUGELLAGER	COJINETE
BEARING	ROULEMENT	KUGELLAGER	COJINETE
BEARING	ROULEMENT	KUGELLAGER	COJINETE
PLUG	BOUCHON	STOEPSSEL	ENCHUFE
PLUG	BOUCHON	STOEPSSEL	ENCHUFE
LIGHT	LUMIERE	WARNLAMPE	INDICADOR
OIL	HUILE	OEL	ACEITE
PINION	PIGNON	RITZEL	PIÑON
CROWN	COURONNE	KRONE	CORONA
GEAR	ENGRENAGES	ZAHNRAEDER	ENGRANAJE
SHAFT	ARBRE	WELLE	EJE
METAL RING	RONDELLE	METALL-RING	RUEDA
LID	COUVERCLE	DECKEL	TAPA
SPACER	ENTRETOISE	ABSTANDSTUECK	ESPACIADORES
SPRING	RESSORT	FEDER	MUELLE
LID	COUVERCLE	DECKEL	TAPA
GEAR	ENGRENAGE	ZAHNRAEDER	ENGRANAJE
GEAR	ENGRENAGE	ZAHNRAEDER	ENGRANAJE
GEAR	ENGRENAGE	ZAHNRAEDER	ENGRANAJE
GEAR	ENGRENAGE	ZAHNRAEDER	ENGRANAJE
GEAR	ENGRENAGE	ZAHNRAEDER	ENGRANAJE
GEAR	ENGRENAGE	ZAHNRAEDER	ENGRANAJE
GEAR	ENGRENAGE	ZAHNRAEDER	ENGRANAJE
GEAR	ENGRENAGE	ZAHNRAEDER	ENGRANAJE
GEAR	ENGRENAGE	ZAHNRAEDER	ENGRANAJE
GEAR	ENGRENAGE	ZAHNRAEDER	ENGRANAJE

Copyright © 2009 Alpego s.p.a. ®

Tutti i diritti sono riservati. È vietata espressamente la ristampa o l'uso non autorizzato senza permesso scritto dalla Alpego s.p.a.

Tous droits réservés. Toute réimpression ou utilisation non autorisée sans la permission écrite de la Alpego s.p.a. est formellement interdite

Alle Rechte vorbehalten. Nachdruck, Vervielfältigung und Verbreitung, auch auszugsweise, ist ohne schriftliche Genehmigung der Alpego s.p.a.

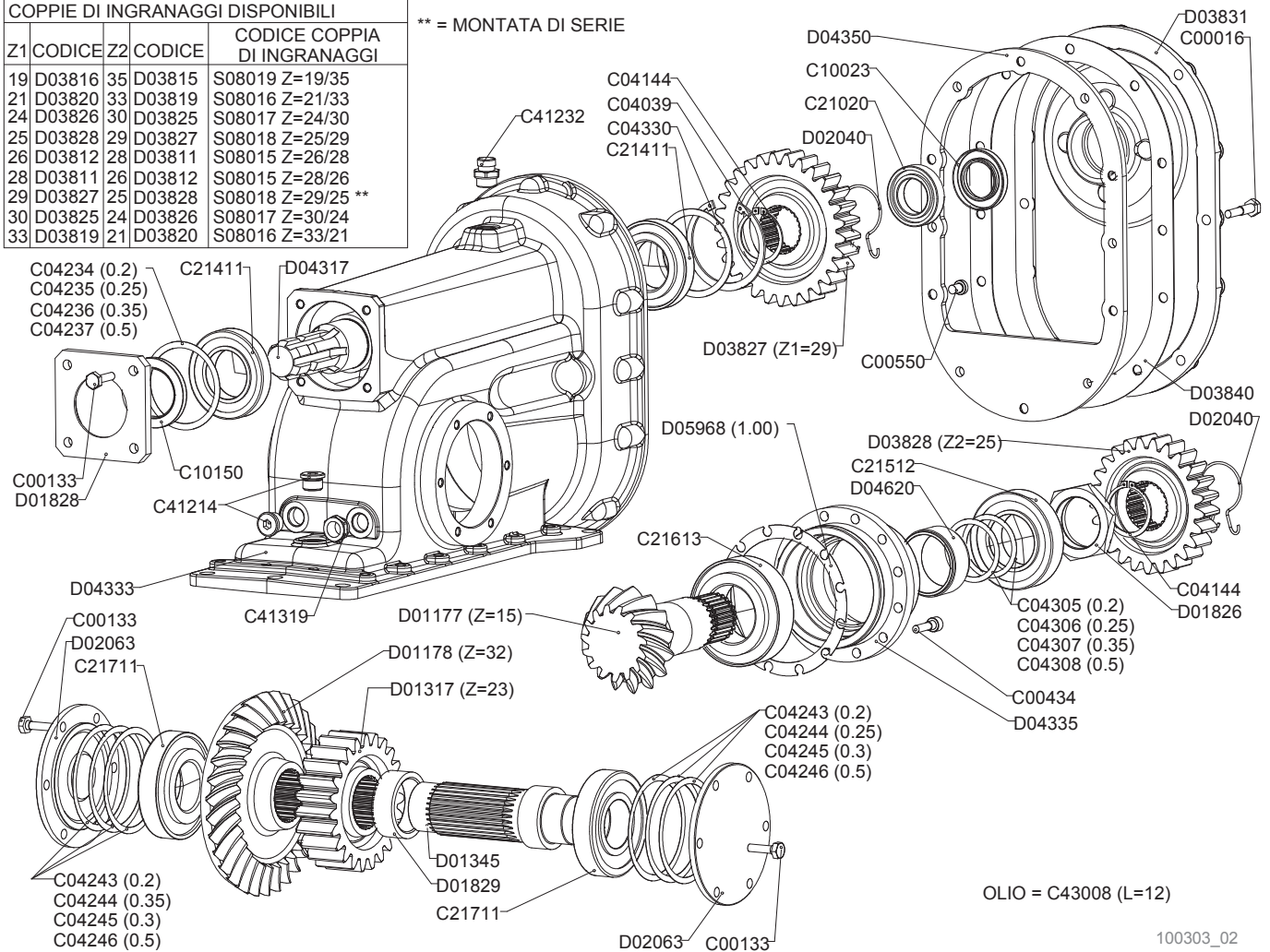
All rights reserved. Any reprinting or unauthorized use without the written permission of Alpego s.p.a. is expressly prohibited

Todos los derechos reservados. Toda reproducción o uso no autorizado sin el consentimiento escrito de Alpego s.p.a. quedan expresamente prohibidos

23/12/2014

COPPIE DI INGRANAGGI DISPONIBILI				
Z1	CODICE	Z2	CODICE	CODICE COPPIA DI INGRANAGGI
19	D03816	35	D03815	S08019 Z=19/35
21	D03820	33	D03819	S08016 Z=21/33
24	D03826	30	D03825	S08017 Z=24/30
25	D03828	29	D03827	S08018 Z=25/29
26	D03812	28	D03811	S08015 Z=26/28
28	D03811	26	D03812	S08015 Z=28/26
29	D03827	25	D03828	S08018 Z=29/25 **
30	D03825	24	D03826	S08017 Z=30/24
33	D03819	21	D03820	S08016 Z=33/21

\*\* = MONTATA DI SERIE



OLIO = C43008 (L=12)

100303\_02



## Testa cambio

Gear box head

Tete boite

Wechselgetriebe

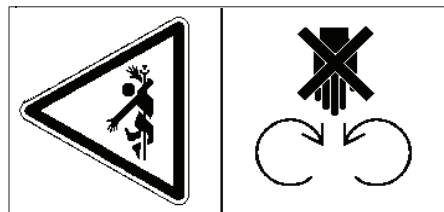
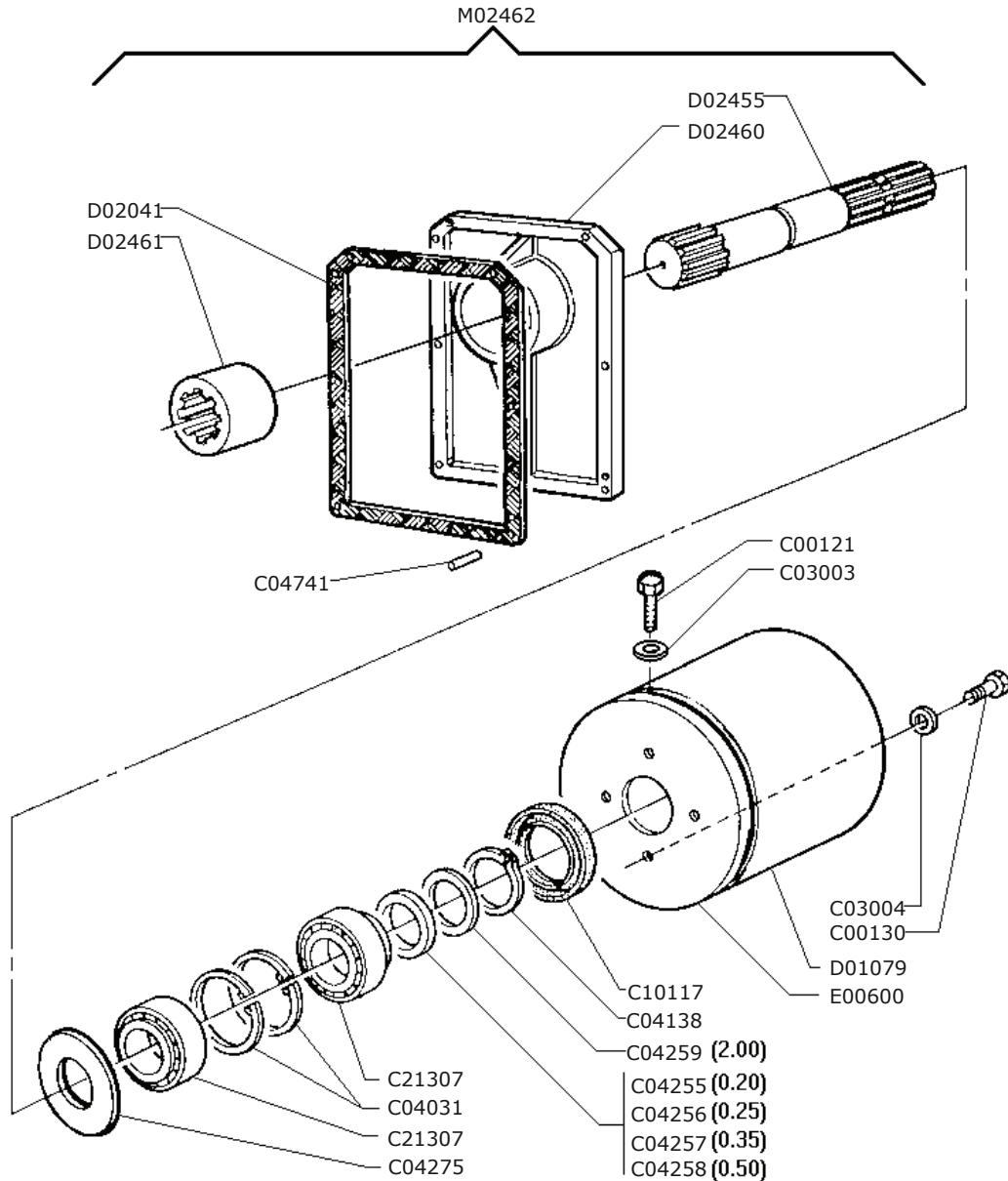
Drawing Code:

**100303\_2**

Accessories:

N°	Code	Old.	Descrizione / Description
#	C15A00301	D03831	COPERCHIO POSTERIORE CS 120/190
#	H30A00017	D03840	GUARNIZ. COPERCHIO CAMBIO CS/CL
#	M45A00046	D04317	ALBERO INGRESSO T130/T190
#	C15A00345	D04333	SCATOLA CAMBIO T130/T190
#	C15A00347	D04335	MOZZO PORTA PIGNONE T130/T190
#	C15A00350	D04350	PARETE COPERCHIO T130/T190
#	C15A00371	D04620	DISTANZ. PIGNONE CAMBIO T-190***
#	MA5A00115	D05968	SPESSORE REG. 1MM PIGNONE T130/T190
#	SA0A00019	S08015	COPPIA INGRANAGGI 26/28 CS
#	SA0A00020	S08016	COPPIA INGRANAGGI 21/33 CS
#	SA0A00021	S08017	COPPIA INGRANAGGI 24/30 CS
#	SA0A00022	S08018	COPPIA INGRANAGGI 25/29 CS
#	SA0A00023	S08019	COPPIA INGRANAGGI 19/35 CS

GB	FR	D	E
LID	COUVERCLE	DECKEL	TAPA
GASKET	GARNITURE	DICHTUNG	GUARNICION
SHAFT	ARBRE	WELLE	EJE
BOX	BOITE	SCHACTEL	RECUADRO
HUB	ESSIEU	NABE	MAZO
WALL	MUR	WAND	PARED
SPACER	ENTRETOISE	ABSTANDSTUECK	ESPACIADORES
THICKNESS	CALES	DICKE	ESPEJOR
PAIR	PAIRE	PAAR	PAREJA/PAR
PAIR	PAIRE	PAAR	PAREJA/PAR
PAIR	PAIRE	PAAR	PAREJA/PAR
PAIR	PAIRE	PAAR	PAREJA/PAR
PAIR	PAIRE	PAAR	PAREJA/PAR





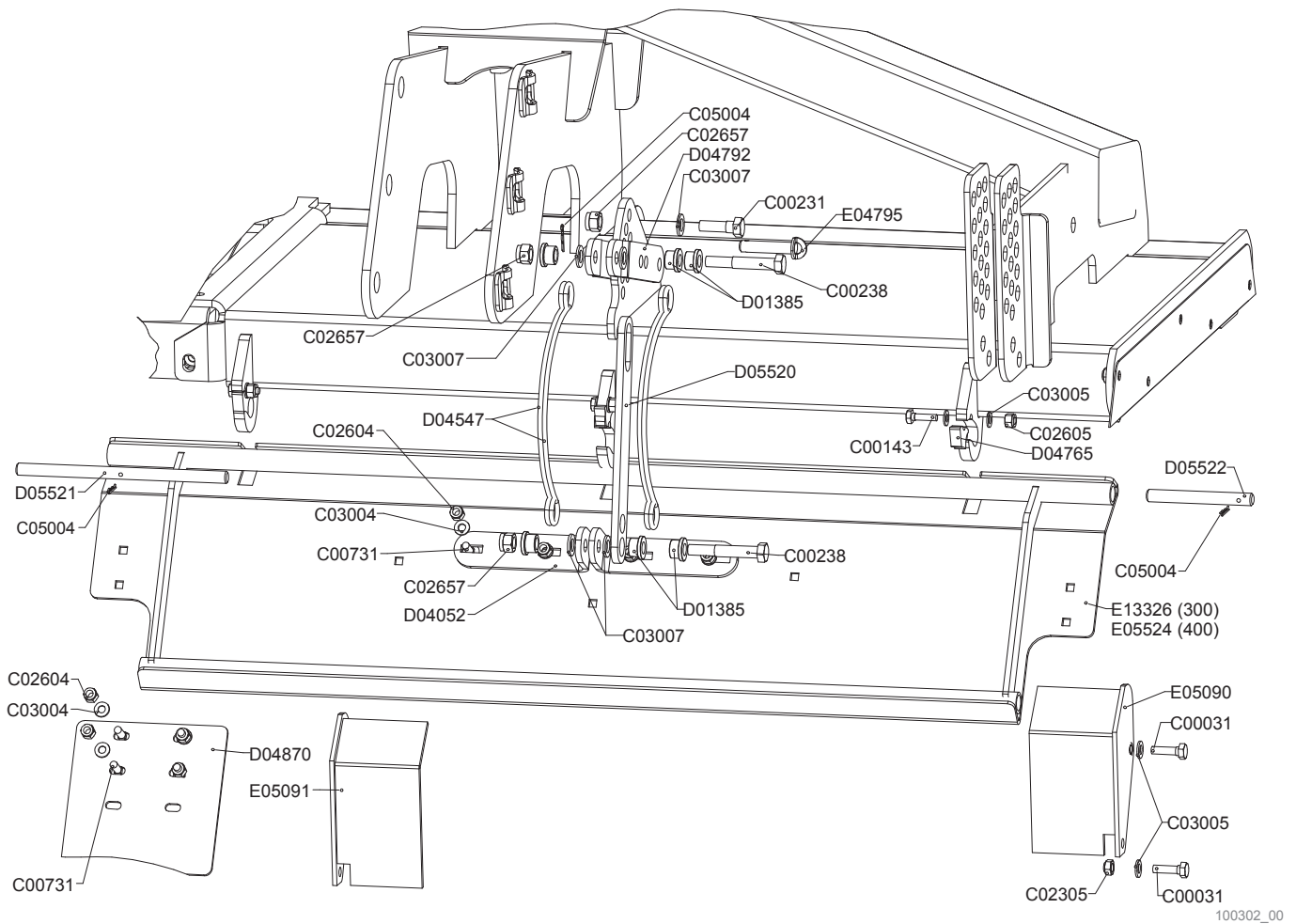
**P.d.F. posteriore LE-DF**  
 Rear power take off LE-DF  
 Prise de force arriere LE-DF  
 Hinrere Zapfwelle LE-DF

Drawing Code: **100046\_0**

Accessories: SA1A00005

N°	Code	Old.	Descrizione / Description
#	M80A00110	C00121	VITE TE 88 PG FT M8X20 ZINC UNI 5739
#	M80A00117	C00130	VITE TE 88 PG FT M10X20 ZINC UNI 5739
#	M90A00005	C03003	RONDELLA PIANA D.8,4 DIN125-A ZINC.
#	M90A00007	C03004	RONDELLA PIANA D.10,5 DIN125-A ZINC.
#	MA0A00006	C04031	SEEGER FORO D.62 UNI 7437
#	MA0A00036	C04138	SEEGER ALBERO D.35 UNI 7435
#	MA5A00053	C04255	SPESSORE REG. 35X45X0,20
#	MA5A00054	C04256	SPESSORE REG. 35X45X0,25
#	MA5A00055	C04257	SPESSORE REG. 35X45X0,35
#	MA5A00056	C04258	SPESSORE REG. 35X45X0,50
#	MA5A00057	C04259	SPESSORE REG. 35X45X2
#	MA5A00074	C04275	SPESSORE REG. 40,5X69,5X3
#	MB0A00079	C04741	SPINA CILINDRICA D.10X16 DIN 6325
#	H00A00043	C10117	PARAOLIO BASL D.35X62X10 (POLIACR.)
#	M20A00053	C21307	CUSCINETTO 32007 35X62X18
#	G10A00038	D01079	PROTEZIONE CARDANO D.INT.220X h 200
#	H30A00002	D02041	GUARNIZIONE COPERCHIO POST.LE/DF
#	M45A00023	D02455	ALBERO P.D.F. POSTERIORE LE DF
#	C15A00166	D02460	COPERCHIO P.D.F. POSTERIORE LE DF
#	M75A00028	D02461	GIUNTO SCAN. 55X50 P.D.F. POST. LE DF
#	C20A00034	E00600	FONDELLO PROTEZIONE COMPLETO
#	M65A00026	M02462	COMPLESSIVO P.D.F. POSTERIORE LE DF

GB	FR	D	E
SCREW	VIS	SCHRAUBE	TORNILLO
SCREW	VIS	SCHRAUBE	TORNILLO
WASHER	RONDELLE	UNTERLEGSCHIEBE	ARANDELLA
WASHER	RONDELLE	UNTERLEGSCHIEBE	ARANDELLA
SEEGER	SEEGER	SEEGER	SEEGER
SEEGER	SEEGER	SEEGER	SEEGER
THICKNESS	CALES	DICKE	ESPESOR
THICKNESS	CALES	DICKE	ESPESOR
THICKNESS	CALES	DICKE	ESPESOR
THICKNESS	CALES	DICKE	ESPESOR
THICKNESS	CALES	DICKE	ESPESOR
THICKNESS	CALES	DICKE	ESPESOR
SOCKET	GOUPILLE	STECKER	PASADOR
SEALING RING	JOINT SPI	OELABDICHTUNG	PARAOLIO
BEARING	ROULEMENT	KUGELLAGER	COJINETE
PROTECTION	PROTECTION	SCHUTZ	PROTECCIÓN
GASKET	GARNITURE	DICHTUNG	GUARNICION
SHAFT	ARBRE	WELLE	EJE
LID	COUVERCLE	DECKEL	TAPA
JOINT	JOINT	KUPPLUNG	MIXTO
BOTTOM	FOND	BODEN	FONDO
OVERVIEW	TOTAL	GESAMTANSICHT	TOTAL



100302\_00





**Cofani**  
**Bonnets**  
**Capots**  
**Abdeckhauben**

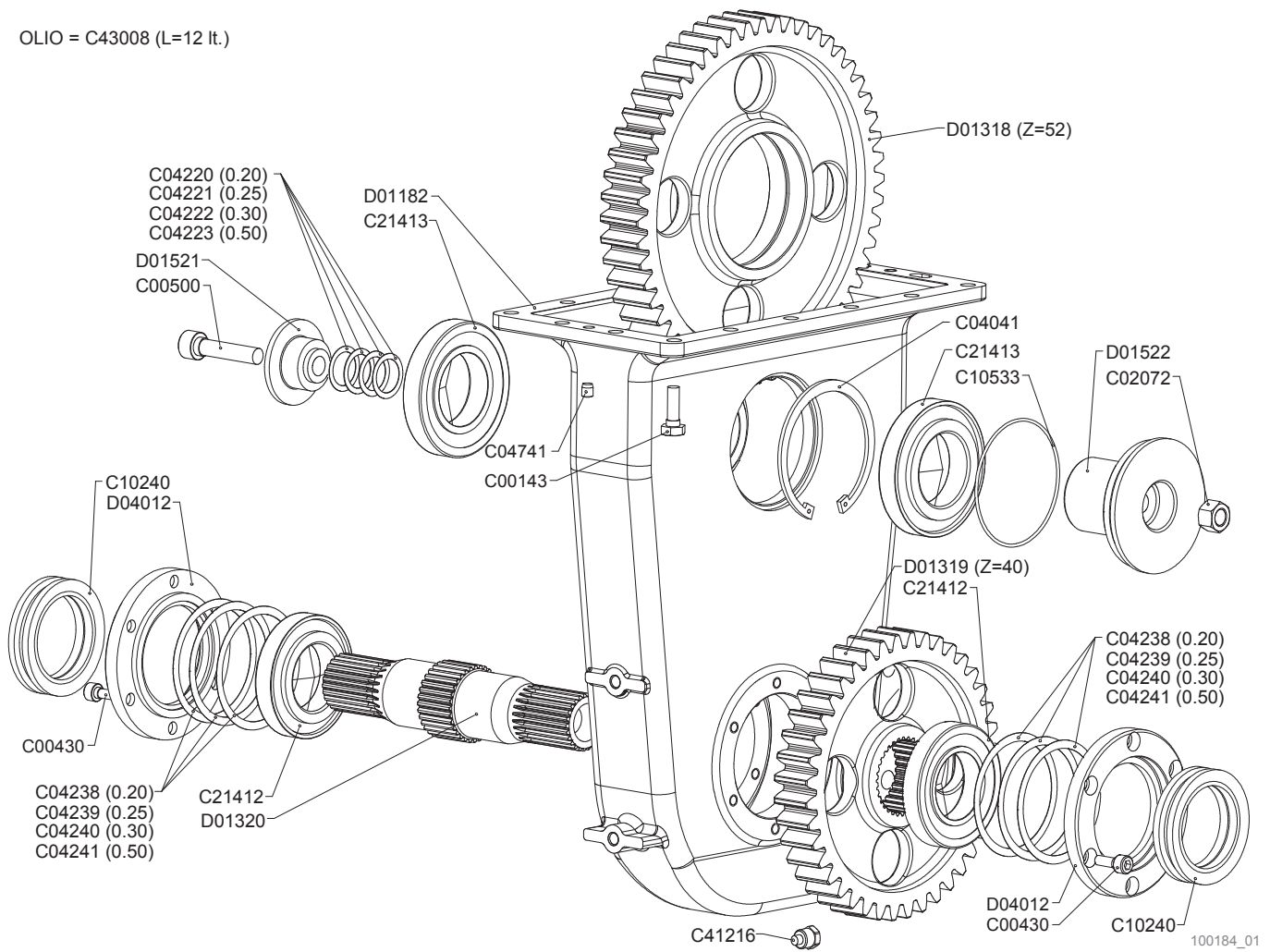
Drawing Code: **100302\_0**

Accessories:

N°	Code	Old.	Descrizione / Description
#	M80A00028	C00031	VITE TE 88 PG FP M12X45 ZINC UNI 5737
#	M80A00130	C00143	VITE TE 88 PG FT M12X35 ZINC UNI 5739
#	M80A00180	C00231	VITE TE 88 PF FP M16X1,5X50 ZINC UNI 5738
#	M80A00187	C00238	VITE TE 88 PF FP M16X1,5X100 ZINC UNI 57
#	MF0A00001	C00731	BULLONE TTQDE M10X30 UNI 5732 ZINC.BIANC
#	M85A00050	C02305	DADO METALBLOC M12 X 1.75
#	M85A00077	C02604	DADO AUTOBLOC ALTO 8 M10 H=11.5 UNI 7473
#	M85A00078	C02605	DADO AUTOBLOC ALTO 8 M12 H=14 UNI 7473
#	M85A00089	C02657	DADO AUTOBLOC ALTO 8 M16X1,5 H=18 UNI 7473
#	M90A00007	C03004	RONDELLA PIANA D.10,5 DIN125-A ZINC.
#	M90A00008	C03005	RONDELLA PIANA D.13 DIN125-A ZINC.
#	M90A00010	C03007	RONDELLA PIANA D.17 DIN125-A ZINC.
#	MB0A00087	C05004	SPINA A MOLLA D.4
#	C15A00062	D01385	BUSSOLA D25/32 D.16,5 L.18,5 CARBON+ZINC
#	C10A01397	D04052	STAFFA INF. FISSAGGIO PREMICOFANO FM FP FH
#	MG0A00002	D04547	BALESTRA COFANO D.6,4
#	C05A04594	D04765	FERMO GANCIO COFANI FM/FP 15MM
#	C10A01515	D04792	BRACCIO REGISTRO COFANI FM/FP
#	C05A04639	D04870	CHIUSURA CENTRALE COFANI LH/KH/LP/KP SP6
#	C05A04900	D05520	FINECORSO BALESTRA COFANO FH/LH 10MM
#	C15A00390	D05521	BACCHETTA CENTR. 17X300 COFANI A GANCIO
#	C15A00391	D05522	BACCHETTA LATER. 17X150 COFANI A GANCIO
#	M15A00176	E04795	PERNO ROND D.16X66,7 UT.FOROD.4,5ZINC***
#	C20A00959	E05090	ANGOLO DESTRO CHIUSURA COFANO LH-KH
#	C20A00960	E05091	ANGOLO SINISTRO CHIUSURA COFANO LH-KH
#	C20A01037	E05524	COFANO FH/LH-400
#	C20A02077	E13326	COFANO KH2-300 RAPIDO

GB	FR	D	E
SCREW	VIS	SCHRAUBE	TORNILLO
SCREW	VIS	SCHRAUBE	TORNILLO
SCREW	VIS	SCHRAUBE	TORNILLO
SCREW	VIS	SCHRAUBE	TORNILLO
BOLT	BOULON	FLANSCH	BRIDA
NUT	BOULONS	NUT	DADO
NUT	BOULONS	NUT	DADO
NUT	BOULONS	NUT	DADO
NUT	BOULONS	NUT	DADO
WASHER	RONDELLE	UNTERLEGSCHLEIBE	ARANDELLA
WASHER	RONDELLE	UNTERLEGSCHLEIBE	ARANDELLA
WASHER	RONDELLE	UNTERLEGSCHLEIBE	ARANDELLA
SOCKET	GOUPILLE	STECKER	PASADOR
BUSHING	ENTRETOISE	BUCHSE	BRUJULA
BRACKET	SUPPORT	BUEGEL	SOPORTE
CROSSBOARD	RESSORT	BLATTFEDER	BALLESTA
MECH. STOP	FERMETURE	MECH. SPERRUNG	PARADO
ARM	BRAS	ARM	BRAZO
GATE	FERMETURE	VERSCHLUSS	CIERRE
STOP	FIN DE COURSE	ENDANSCHLAG	LÍMITE
ROD	TUBE	STIFT	BAQUETAS
ROD	TUBE	STIFT	BAQUETAS
PIN	PIVOT	STIFT	PIN
ANGLE	ANGULAIRE	WINKEL	Ángulo
ANGLE	ANGULAIRE	WINKEL	Ángulo
BONNET	CAPOT	MOTORHAUBE	CAPÓ
BONNET	CAPOT	MOTORHAUBE	CAPÓ

OLIO = C43008 (L=12 lt.)





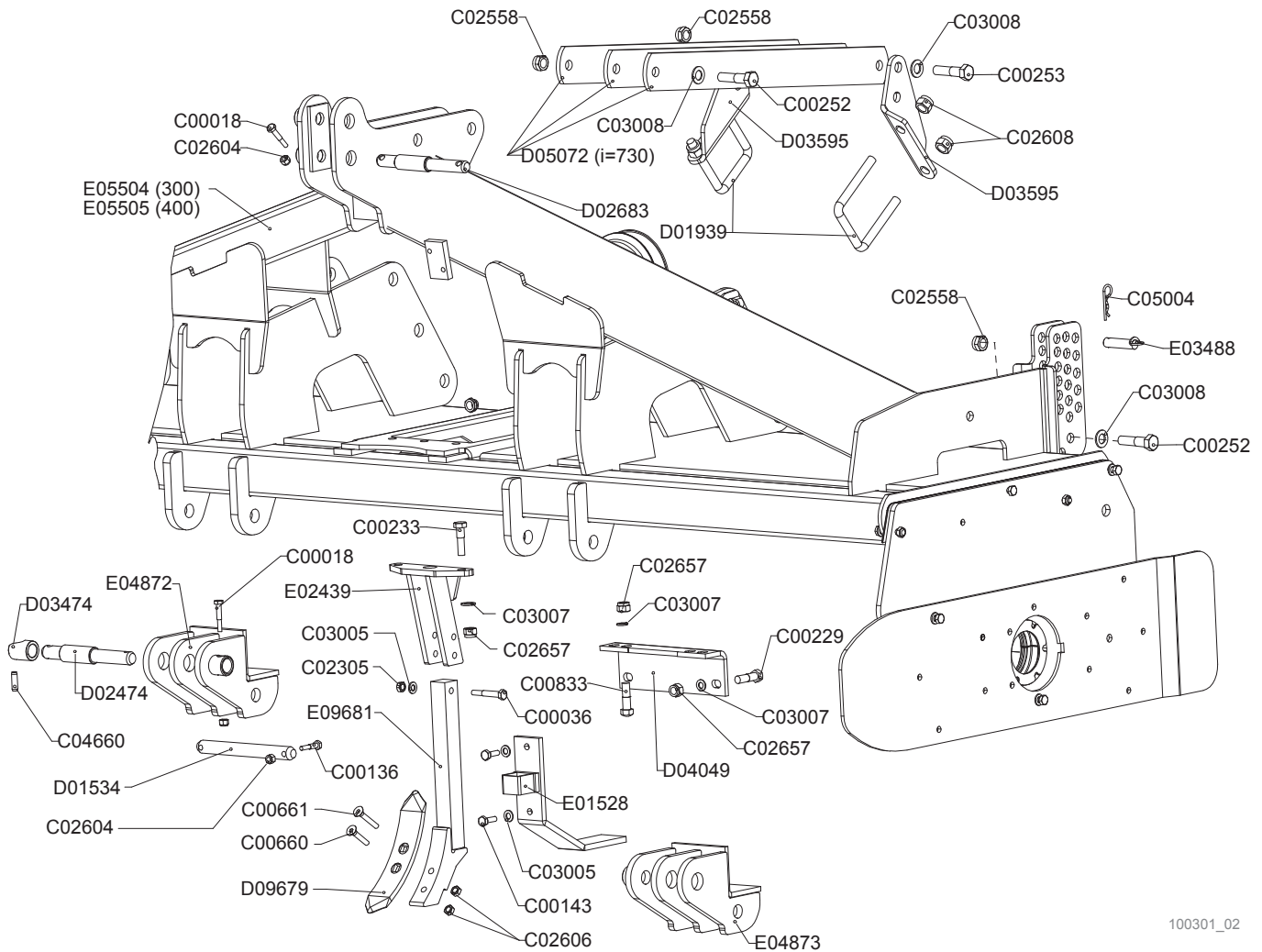
**Cascata**  
 Lower transmission  
 Transmission inferieur  
 Unter getriebe

Drawing Code: **100184\_1**

Accessories:

N°	Code	Old.	Descrizione / Description
#	M80A00130	C00143	VITE TE 88 PG FT M12X35 ZINC UNI 5739
#	M80A00243	C00430	VITE TCEI PG M10X25 ZINC UNI 5931
#	M80A00257	C00500	VITE TCEI PG M16X70 UNI 5931
#	M85A00018	C02072	DADO ALTO 10 PG M16 5587
#	MA0A00016	C04041	SEEGER FORO D.120 UNI 7437
#	MA5A00020	C04220	SPESSORE REG. 30X40X0,2
#	MA5A00021	C04221	SPESSORE REG. 30X40X0,25
#	MA5A00022	C04222	SPESSORE REG. 30X40X0,3
#	MA5A00023	C04223	SPESSORE REG. 30X40X0,5
#	MA5A00038	C04238	SPESSORE REG. 95.2X109.7X0,2
#	MA5A00039	C04239	SPESSORE REG. 95.2X109.7X0,25
#	MA5A00040	C04240	SPESSORE REG. 95.2X109.7X0,3
#	MA5A00041	C04241	SPESSORE REG. 95.2X109.7X0,5
#	MB0A00079	C04741	SPINA CILINDRICA D.10X16 DIN 6325
#	H25A00002	C10240	TENUTA MECCANICA D.102.2 D.73.8X23
#	H05A00035	C10533	ANELLO OR 3425 D.INT.107.62x2,62
#	M20A00064	C21412	CUSCINETTO 30212 60X110X23,75
#	M20A00065	C21413	CUSCINETTO 30213 65X120X24,75
#	H45A00009	C41216	TAPPO CONICO M16X1,5 MAGNET.8X18 CH-17
#	L20A00004	C43008	OLIO SINT. GLOBAL MULTIGEAR CBS-A
#	C15A00044	D01182	SCATOLA CASCATA LE
#	M40A00010	D01318	INGRANAGGIO Z=52 LE-LH-FH
#	M40A00011	D01319	INGRANAGGIO Z=40 LE-LH-FH
#	M45A00010	D01320	ALBERO USCITA LE
#	C15A00069	D01521	BOTTONE PERNO INTERMEDIO LE (CEMENTATO)
#	C15A00070	D01522	PERNO INTERMEDIO 65X64 UT.( CEMENTATO )
#	C15A00321	D04012	COPERCHIO ALBERO USCITA LE4 (GNL)

GB	FR	D	E
SCREW	VIS	SCHRAUBE	TORNILLO
SCREW	VIS	SCHRAUBE	TORNILLO
SCREW	VIS	SCHRAUBE	TORNILLO
NUT	BOULONS	NUT	DADO
SEEGER	SEEGER	SEEGER	SEEGER
THICKNESS	CALES	DICKE	ESPEJOR
THICKNESS	CALES	DICKE	ESPEJOR
THICKNESS	CALES	DICKE	ESPEJOR
THICKNESS	CALES	DICKE	ESPEJOR
THICKNESS	CALES	DICKE	ESPEJOR
THICKNESS	CALES	DICKE	ESPEJOR
THICKNESS	CALES	DICKE	ESPEJOR
THICKNESS	CALES	DICKE	ESPEJOR
THICKNESS	CALES	DICKE	ESPEJOR
THICKNESS	CALES	DICKE	ESPEJOR
SOCKET	GOUPILLE	STECKER	PASADOR
SEAL	GARNITURE	DICHTUNG	SELLO
RING	AMORTISSEUR	RING	ANILLO
BEARING	ROULEMENT	KUGELLAGER	COJINETE
BEARING	ROULEMENT	KUGELLAGER	COJINETE
PLUG	BOUCHON	STOEPSSEL	ENCHUFE
OIL	HUILE	OEL	ACEITE
BOX	BOITE	SCHACTEL	RECUADRO
GEAR	ENGRENAGES	ZAHNRAEDER	ENGRANAJE
GEAR	ENGRENAGES	ZAHNRAEDER	ENGRANAJE
SHAFT	ARBRE	WELLE	EJE
PUSH-BOTTON	BOUTONS	DRUCK-KNOPF	BOTON
PIN	PIVOT	STIFT	PIN
LID	COUVERCLE	DECKEL	TAPA



100301\_02



**Telaio**  
**Frame**  
**Chassis**  
**Rahmen**

Drawing Code: **100301\_2**

Accessories:

N°	Code	Old.	Descrizione / Description
#	M80A00015	C00018	VITE TE 88 PG FP M10X60 ZINC UNI 5737
#	M80A00033	C00036	VITE TE 88 PG FP M12X80 ZINC UNI 5737
#	M80A00124	C00136	VITE TE 88 PG FT M10X50 ZINC UNI 5739
#	M80A00130	C00143	VITE TE 88 PG FT M12X35 ZINC UNI 5739
#	M80A00179	C00229	VITE TE 10.9 M16X1,5X45 ZINC F25
#	M80A00182	C00233	VITE TE 88 PF FP M16X1,5X60 ZINC UNI 573
#	M80A00197	C00252	VITE TE 88 PF FP M20X1,5X80 ZINC UNI 573
#	M80A00198	C00253	VITE TE 88 PF FP M20X1,5X90 ZINC UNI 573
#	M80A00304	C00660	VITE TSPEI 10.9 PG M14X70 UNI 5933
#	M80A00305	C00661	VITE TSPEI 10.9 PG M14X90 ZINC UNI 5933
#	M80A00326	C00833	VITE TE 12.9 M16X1,5X57 F28/32 (T.TONDA) ZINCO-LAMELLARE
#	M85A00050	C02305	DADO METALBLOC M12 X 1.75
#	M85A00066	C02558	DADO AUTOBLOC BASSO 8 PF M20X1,5 H=20 UNI 7474
#	M85A00077	C02604	DADO AUTOBLOC ALTO 8 M10 H=11.5 UNI 7473
#	M85A00079	C02606	DADO AUTOBLOC ALTO 8 M14 H=16 UNI 7473
#	M85A00081	C02608	DADO AUTOBLOC ALTO 8 M20 H=22 UNI 7473
#	M85A00089	C02657	DADO AUTOBLOC ALTO 8 M16X1,5 H=18 UNI 7473
#	M90A00008	C03005	RONDELLA PIANA D.13 DIN125-A ZINC.
#	M90A00010	C03007	RONDELLA PIANA D.17 DIN125-A ZINC.
#	M90A00011	C03008	RONDELLA PIANA D.21 DIN125-A ZINC.
#	MB0A00071	C04660	SPINA SPIROL D.12X40
#	MB0A00087	C05004	SPINA A MOLLA D.4
#	M15A00017	D01534	PERNO D.28X224 UT.2 FORI D.11ZINC
#	MD5A00005	D01939	CAVALLOTTO QUADRO M20X100X145
#	M15A00028	D02474	PERNO AT.TRAT.D.36/28X247 BONIF.+ZINC***
#	M15A00030	D02683	PERNO D.32/25X247 BONIF.+ZINC***
#	C15A00269	D03474	DIST. D.42,4 D.29,8 L.51+FORO D.12ZINC***
#	C10A01354	D03595	STAFFA ATTACCO RULLO SERIE 3-4 10MM
#	C10A01394	D04049	ANGOLO RINFORZO CAMBIO FE4
#	C05A04699	D05072	LAMA RULLO SUPERIORE LH I=730 2XD21
#	MK0A00149	D09679	VOMERE ROMPIRACCIA 40X16X270 2 FORI M14
#	C20A00210	E01528	PROTEZIONE INFERIORE GRUPPO LE-FE
#	C20A00433	E02439	ATTACCO BRACCIO VOMERE CENTR.LE-FE-LH-FH
#	M15A00174	E03488	PERNO ROND D.20X63 UT. FORO D.6 ZINC***
#	C20A00915	E04872	ATTACCO TRATT. DESTRO FISSO FH
#	C20A00916	E04873	ATTACCO TRATT. SINISTRO FISSO FH
#	C20A01034	E05504	TELAIO FH/LH-300 COFANO A GANCIO
#	C20A01035	E05505	TELAIO FH/LH-400 COFANO A GANCIO
#	C20A01662	E09681	BRACCIO VOMERE CENTRALE FH/LH D.15X45***

GB	FR	D	E
SCREW	VIS	SCHRAUBE	TORNILLO
SCREW	VIS	SCHRAUBE	TORNILLO
SCREW	VIS	SCHRAUBE	TORNILLO
SCREW	VIS	SCHRAUBE	TORNILLO
SCREW	VIS	SCHRAUBE	TORNILLO
SCREW	VIS	SCHRAUBE	TORNILLO
SCREW	VIS	SCHRAUBE	TORNILLO
SCREW	VIS	SCHRAUBE	TORNILLO
SCREW	VIS	SCHRAUBE	TORNILLO
SCREW	VIS	SCHRAUBE	TORNILLO
SCREW	VIS	SCHRAUBE	TORNILLO
SCREW	VIS	SCHRAUBE	TORNILLO
NUT	BOULONS	NUT	DADO
NUT	BOULONS	NUT	DADO
NUT	BOULONS	NUT	DADO
NUT	BOULONS	NUT	DADO
NUT	BOULONS	NUT	DADO
NUT	BOULONS	NUT	DADO
WASHER	RONDELLE	UNTERLEGSSCHEIBE	ARANDELLA
WASHER	RONDELLE	UNTERLEGSSCHEIBE	ARANDELLA
WASHER	RONDELLE	UNTERLEGSSCHEIBE	ARANDELLA
SOCKET	GOUPILLE	STECKER	PASADOR
SOCKET	GOUPILLE	STECKER	PASADOR
PIN	PIVOT	STIFT	PIN
PIN	CAVALLIER	STIFT	CAVALLOTTI
PIN	PIVOT	STIFT	PIN
PIN	PIVOT	STIFT	PIN
SPACER	ENTRETOISE	ABSTANDSTUECK	ESPACIADORES
BRACKET	SUPPORT	BUEGEL	SOPORTE
ANGLE	ANGULAIRE	WINKEL	Ángulo
METAL PLATE	LAME	METALL-PLATTE	CUCHILLA
PLOUGHSHARE	SOC	PFLUGSCHAR	REJA
PROTECTION	PROTECTION	SCHUTZ	PROTECCIÓN
CONNECTION	ATTELAGE	ANSCHLUSS	ATAQUE
PIN	PIVOT	STIFT	PIN
CONNECTION	ATTELAGE	ANSCHLUSS	ATAQUE
CONNECTION	ATTELAGE	ANSCHLUSS	ATAQUE
FRAME	CHASSIS	RAHMEN	MARCO
FRAME	CHASSIS	RAHMEN	MARCO
ARM	BRAS	ARM	BRAZO

## Barra affinamento BA4

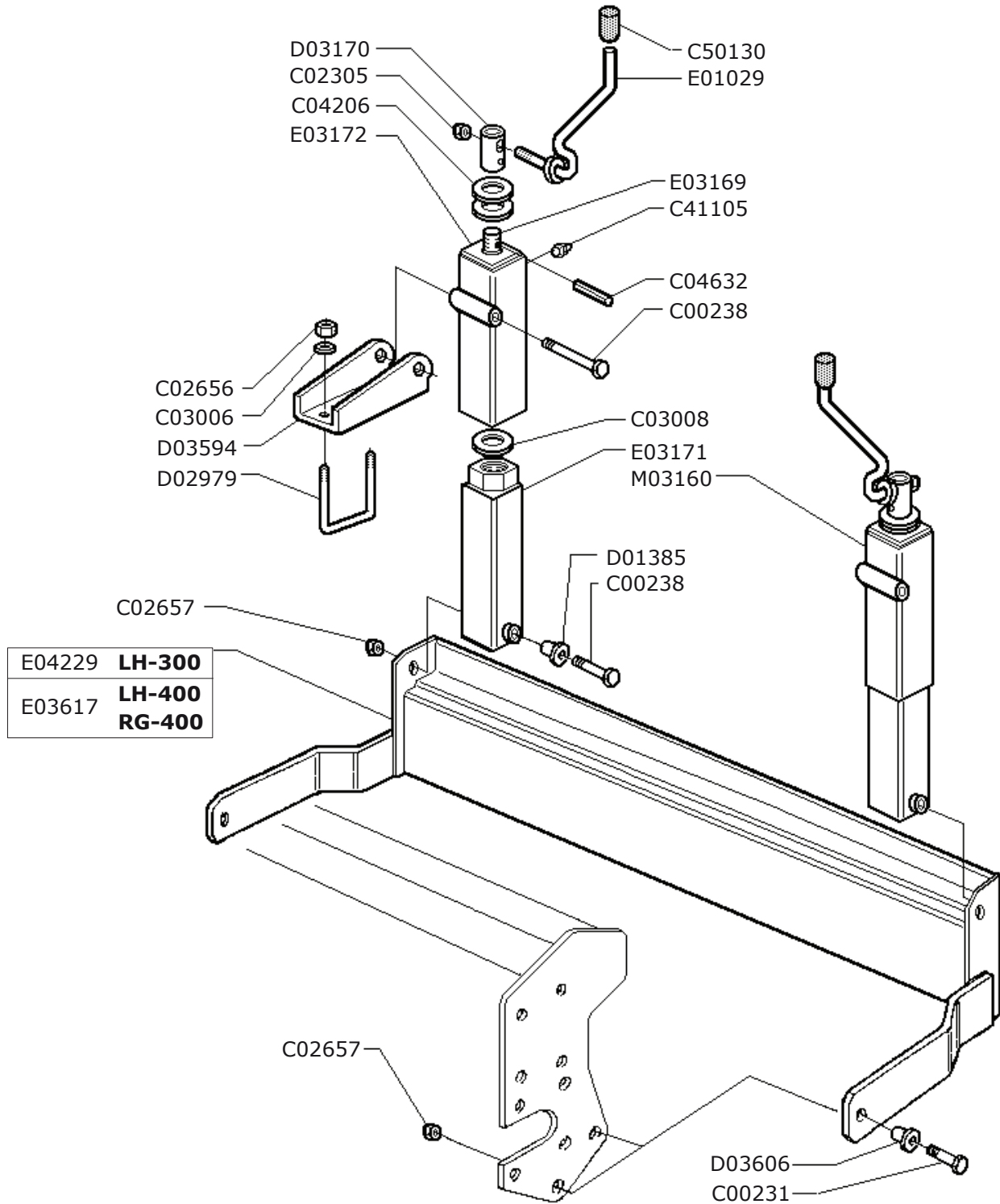
Rear bar BA4

Barra arriere BA4

Hintere stange BA4

Drawing Code: **100194\_0**

Accessories:



100194\_00



## Barra affinamento BA4

Rear bar BA4

Barra arriere BA4

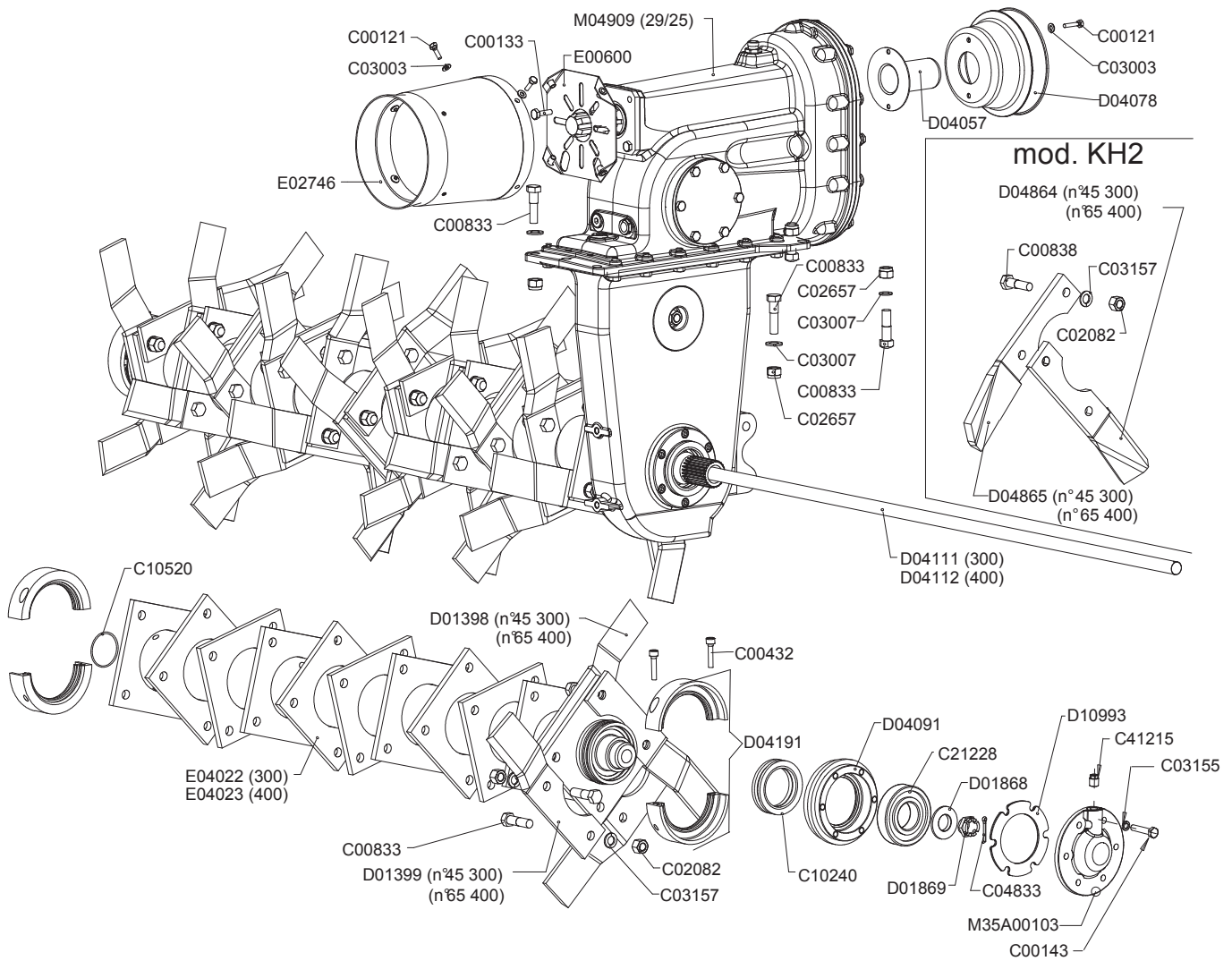
Hintere stange BA4

Drawing Code: **100194\_0**

Accessories:

N°	Code	Old.	Descrizione / Description
#	M80A00180	C00231	VITE TE 88 PF FP M16X1,5X50 ZINC UNI 5738
#	M80A00187	C00238	VITE TE 88 PF FP M16X1,5X100 ZINC UNI 57
#	M85A00050	C02305	DADO METALBLOC M12 X 1.75
#	M85A00088	C02656	DADO AUTOBLOC ALTO 8 M14X1,5 H=16 UNI 7473
#	M85A00089	C02657	DADO AUTOBLOC ALTO 8 M16X1,5 H=18 UNI 7473
#	M90A00009	C03006	RONDELLA PIANA D.15 DIN125-A ZINC.
#	M90A00011	C03008	RONDELLA PIANA D.21 DIN125-A ZINC.
#	MA5A00005	C04206	SPESSORE 28x40x2 ZINC.+DEIDR. HRC 44
#	MB0A00065	C04632	SPINA SPIROL D.8X40
#	MJ5A00005	C41105	INGRASSATORE M10X1 DIRITTO
#	G10A00015	C50130	TAPPO PLASTICA FEMMINA D.10
#	C15A00062	D01385	BUSSOLA D25/32 D.16,5 L.18,5 CARBON+ZINC
#	MD5A00010	D02979	CAVALLOTTO QUADRO M14 T100X100X135
#	C15A00233	D03170	DIST. D.26,9 D.20 L.53+FORO D.8+FORO D.12
#	C10A01353	D03594	STAFFA PORTA MANOVELLA BA3-BA4
#	C15A00279	D03606	BUSSOLA D32/40 D.16,5 L.18 CARBON+ZINC
#	C20A00074	E01029	MANOVELLA M12 PER BARRE
#	C20A00560	E03169	BARRA FILETTATA MANOV.BA2-BA3
#	C20A00561	E03171	TUBO INTERNO MANOVELLA BA2-BA3 M20
#	C20A00562	E03172	TUBO EST. MANOVELLA BA2-BA3
#	C20A00672	E03617	BARRA AFFINAMENTO BA4-400 ***
#	C20A00781	E04229	BARRA AFFINAMENTO BA4-300 LH
#	M79A00017	M03160	MANOVELLA COMPLET. BA2-BA3 CORSA 200 ZINCATA BIANCA

GB	FR	D	E
SCREW	VIS	SCHRAUBE	TORNILLO
SCREW	VIS	SCHRAUBE	TORNILLO
NUT	BOULONS	NUT	DADO
NUT	BOULONS	NUT	DADO
NUT	BOULONS	NUT	DADO
WASHER	RONDELLE	UNTERLEGSSCHEIBE	ARANDELLA
WASHER	RONDELLE	UNTERLEGSSCHEIBE	ARANDELLA
THICKNESS	CALES	DICKE	ESPESSOR
SOCKET	GOUPILLE	STECKER	PASADOR
GREASE NIPPLE	GRAISSOR	FETTBUECHSE	ENGRASADOR
PLUG	BOUCHON	STOEPSSEL	ENCHUFE
BUSHING	ENTRETOISE	BUCHSE	BRUJULA
PIN	CAVALLIER	STIFT	CAVALLOTTI
SPACER	ENTRETOISE	ABSTANDSTUECK	ESPACIADORES
BRACKET	SUPPORT	BUEGEL	SOPORTE
BUSHING	ENTRETOISE	BUCHSE	BRUJULA
CRANK	MANIVELLE	SPINDEL	MANIVELA
BAR	BARRE	STAB	BARRA
TUBE	TUBE	ROHR	TUBO
TUBE	TUBE	ROHR	TUBO
BAR	BARRE	STAB	BARRA
BAR	BARRE	STAB	BARRA
CRANK	MANIVELLE	SPINDEL	MANIVELA







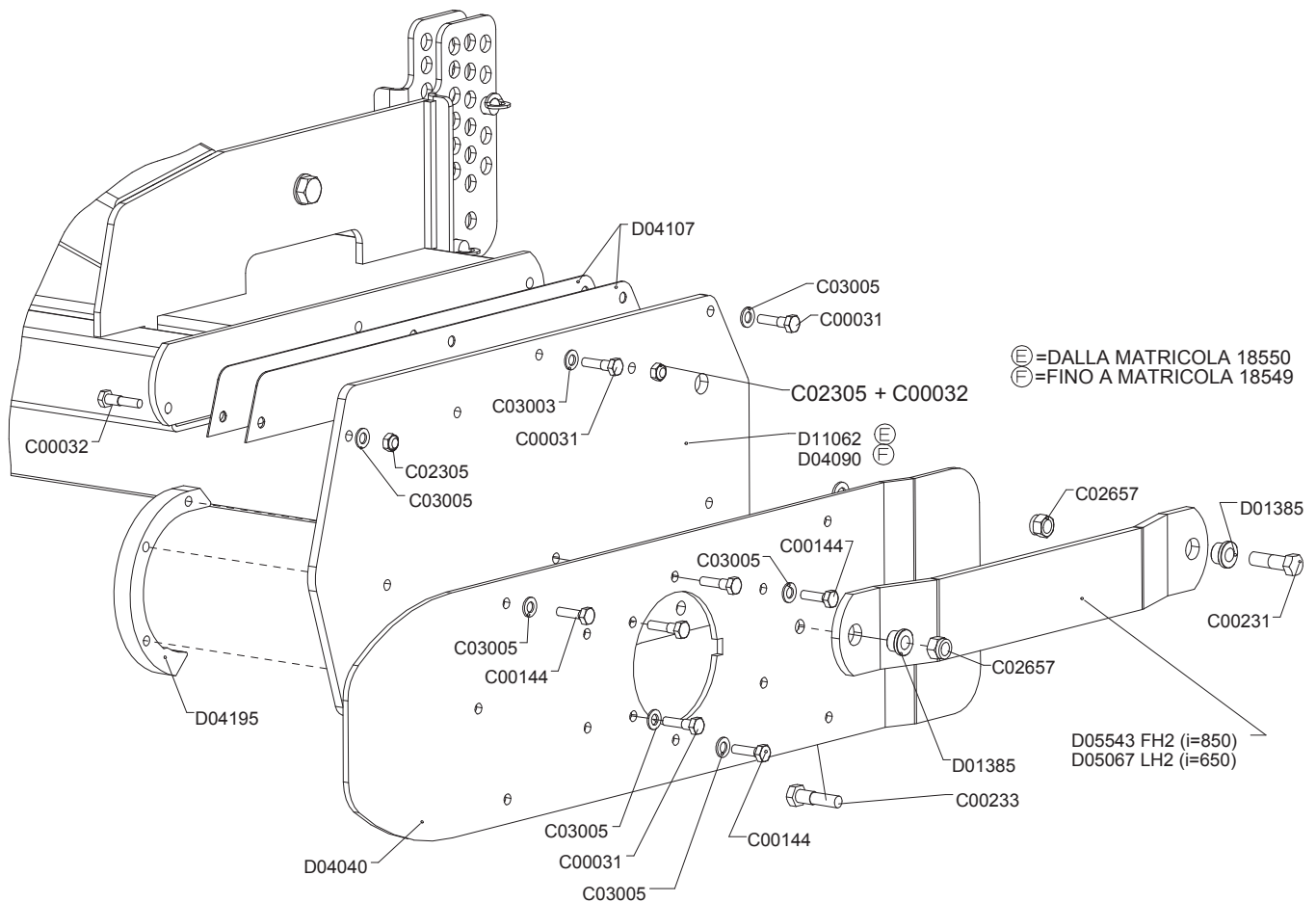
**Trasmissione**  
Transmission  
Transmission  
Getriebe

Drawing Code: **100300\_3**

Accessories:

N°	Code	Old.	Descrizione / Description
#	M80A00110	C00121	VITE TE 88 PG FT M8X20 ZINC UNI 5739
#	M80A00121	C00133	VITE TE 88 PG FT M10X35 ZINC UNI 5739
#	M80A00130	C00143	VITE TE 88 PG FT M12X35 ZINC UNI 5739
#	M80A00245	C00432	VITE TCEI PG M10X45 ZINC UNI 5931
#	M80A00326	C00833	VITE TE 12.9 M16X1,5X57 F28/32 (T.TONDA) ZINCO-LAMELLARE
#	M80A00332	C00838	VITE TE 12.9 M16X1,5X65 F28/32 (T.TONDA) ZINCO-LAMELLARE
#	M85A00022	C02082	DADO ALTO 10 PF M16X1,5 5587 ZINCO-LAMELLARE
#	M85A00089	C02657	DADO AUTOBLOC ALTO 8 M16X1,5 H=18 UNI 7473
#	M90A00005	C03003	RONDELLA PIANA D.8,4 DIN125-A ZINC.
#	M90A00010	C03007	RONDELLA PIANA D.17 DIN125-A ZINC.
#	M90A00044	C03155	RONDELLA GROWER RINF. D.12 ASA B27
#	M90A00048	C03157	RONDELLA GROWER RINF. D.16 ASA B27 ZINCO-LAMELLARE
#	MB5A00016	C04833	COPPIGLIA D.5X40
#	H25A00002	C10240	TENUTA MECCANICA D.102.2 D.73.8X23
#	H05A00023	C10520	ANELLO OR 3237 D.INT.60x2.62
#	M20A00048	C21228	CUSCINETTO 6310 C3-CLASSE A 50X110X27
#	H45A00008	C41215	TAPPO CONICO M16X1,5 8X18 CH17 (11/C)
#	MK0A00030	D01398	LAMA DES - LE/LH INTER.150 FORI 17
#	MK0A00031	D01399	LAMA SIN. - LE/LH INTER.150 FORI 17
#	C15A00109	D01868	RONDELLA SPEC.LE3 CON BATTUTA D.50***
#	M85A00105	D01869	DADO CORONA SPECIALE M24X2
#	G10A00043	D04057	PROT. P.D.F. DE56X105 FLANGIA D.120
#	G10A00044	D04078	PROT. DE200X110 2 FORI D.9X105
#	M35A00010	D04091	SUPPORTO ESTERNO LE4 (SP.8)
#	C15A00329	D04111	TIRANTE ROTORE FE4 / LE4 300 24X2975
#	C15A00330	D04112	TIRANTE ROTORE FE4 / LE4 400 24X4065
#	C15A00335	D04191	PROT. SMONTABILE ROTORE LH/FH ***
#	MK0A00075	D04864	DENTE DESTRO ROTOPIK KH
#	MK0A00077	D04865	DENTE SINISTRO ROTOPIK KH
#	C05A06632	D10993	SPESSORE REG. 92X139.5X4 FINACATA FH/LH
#	C20A00034	E00600	FONDELLO PROTEZIONE COMPLETO
#	G10A00071	E02746	PROTEZIONE CARDANO PROLUNGATA
#	C20A00732	E04022	ROTORE LH-300 11 F.
#	C20A00733	E04023	ROTORE LH-400 16 F.
#	M65A00057	M04909	CAMBIO T+C 190 Z=29/25 (1000=313/232)LH
#	M35A00103		COPERCHIO SUPPORTO EST.-LE- TM DA STM

GB	FR	D	E
SCREW	VIS	SCHRAUBE	TORNILLO
SCREW	VIS	SCHRAUBE	TORNILLO
SCREW	VIS	SCHRAUBE	TORNILLO
SCREW	VIS	SCHRAUBE	TORNILLO
SCREW	VIS	SCHRAUBE	TORNILLO
SCREW	VIS	SCHRAUBE	TORNILLO
NUT	BOULONS	NUT	DADO
NUT	BOULONS	NUT	DADO
WASHER	RONDELLE	UNTERLEGSSCHEIBE	ARANDELLA
WASHER	RONDELLE	UNTERLEGSSCHEIBE	ARANDELLA
WASHER	RONDELLE	UNTERLEGSSCHEIBE	ARANDELLA
WASHER	RONDELLE	UNTERLEGSSCHEIBE	ARANDELLA
COTTER PIN	GOUPILLE	SPLINT	COPPIGLIA
SEAL	GARNITURE	DICHTUNG	SELLO
RING	AMORTISSEUR	RING	ANILLO
BEARING	ROULEMENT	KUGELLAGER	COJINETE
PLUG	BOUCHON	STOEPSSEL	ENCHUFE
METAL PLATE	LAME	METALL-PLATTE	CUCHILLA
METAL PLATE	LAME	METALL-PLATTE	CUCHILLA
WASHER	RONDELLE	UNTERLEGSSCHEIBE	ARANDELLA
NUT	BOULONS	NUT	DADO
PROTECTION	PROTECTION	SCHUTZ	PROTECCIÓN
PROTECTION	PROTECTION	SCHUTZ	PROTECCIÓN
SUPPORT	SUPPORT	STUTZE	APOYO
TIE ROD	TIRANT	ZUGSTANGE	TIRANTE
TIE ROD	TIRANT	ZUGSTANGE	TIRANTE
PROTECTION	PROTECTION	SCHUTZ	PROTECCIÓN
TOOTH	DENT	ZAHN	DIENTE
TOOTH	DENT	ZAHN	DIENTE
THICKNESS	CALES	DICKE	ESPESOR
BOTTOM	FOND	BODEN	FONDO
PROTECTION	PROTECTION	SCHUTZ	PROTECCIÓN
ROTOR	ROTOR	ROTOR	ROTOR
ROTOR	ROTOR	ROTOR	ROTOR
GEAR SHIFT	BOITE DE VITESSE	WECHSELGETRIEBE	CAMBIO
LID	COUVERCLE	DECKEL	TAPA



100411\_02



## Fiancata frese FH2 - LH2

Flank FH2 - LH2

Flanc FH2 - LH2

Flanke FH2 - LH2

Drawing Code: **100411\_2**

Accessories:

N°	Code	Old.	Descrizione / Description
#	M80A00028	C00031	VITE TE 88 PG FP M12X45 ZINC UNI 5737
#	M80A00029	C00032	VITE TE 88 PG FP M12X50 ZINC UNI 5737
#	M80A00131	C00144	VITE TE 88 PG FT M12X40 ZINC UNI 5739
#	M80A00180	C00231	VITE TE 88 PF FP M16X1,5X50 ZINC UNI 5738
#	M80A00182	C00233	VITE TE 88 PF FP M16X1,5X60 ZINC UNI 573
#	M85A00050	C02305	DADO METALBLOC M12 X 1.75
#	M85A00089	C02657	DADO AUTOBLOC ALTO 8 M16X1,5 H=18 UNI 7473
#	M90A00005	C03003	RONDELLA PIANA D.8,4 DIN125-A ZINC.
#	M90A00008	C03005	RONDELLA PIANA D.13 DIN125-A ZINC.
#	C15A00062	D01385	BUSSOLA D25/32 D.16,5 L.18,5 CARBON+ZINC
#	C10A01393	D04040	FIANCATINA CONTENIMENTO EST. LE4 8MM
#	C05A04396	D04090	FIANCATA ESTERNA FH/FE 8MM
#	C05A04398	D04107	SPESSORE FIANCATA ESTERNA FE4 2mm
#	C15A00336	D04195	PROTEZ. SUPP. EST. FH LH (SP.25 MM)
#	C10A01555	D05067	LAMA RULLO INF. LH I=650 2XD26 PIEGA 26/26
#	C10A01628	D05543	LAMA RULLO INF. FH I=850 2XD26 PIEGA 26/26
#	C05A06659	D11062	FIANCATA ESTERNA FH 12MM

GB	FR	D	E
SCREW	VIS	SCHRAUBE	TORNILLO
SCREW	VIS	SCHRAUBE	TORNILLO
SCREW	VIS	SCHRAUBE	TORNILLO
SCREW	VIS	SCHRAUBE	TORNILLO
SCREW	VIS	SCHRAUBE	TORNILLO
NUT	BOULONS	NUT	DADO
NUT	BOULONS	NUT	DADO
WASHER	RONDELLE	UNTERLEGSSCHEIBE	ARANDELLA
WASHER	RONDELLE	UNTERLEGSSCHEIBE	ARANDELLA
BUSHING	ENTRETOISE	BUCHSE	BRUJULA
SIDE	LONG	NEBEN	JUNTO
SIDE	LONG	NEBEN	JUNTO
THICKNESS	CALES	DICKE	ESPESSOR
PROTECTION	PROTECTION	SCHUTZ	PROTECCIÓN
METAL PLATE	LAME	METALL-PLATTE	CUCHILLA
METAL PLATE	LAME	METALL-PLATTE	CUCHILLA
SIDE	LONG	NEBEN	JUNTO



# Cardano centrale

Central pto shaft

Arbre de transmission centrale

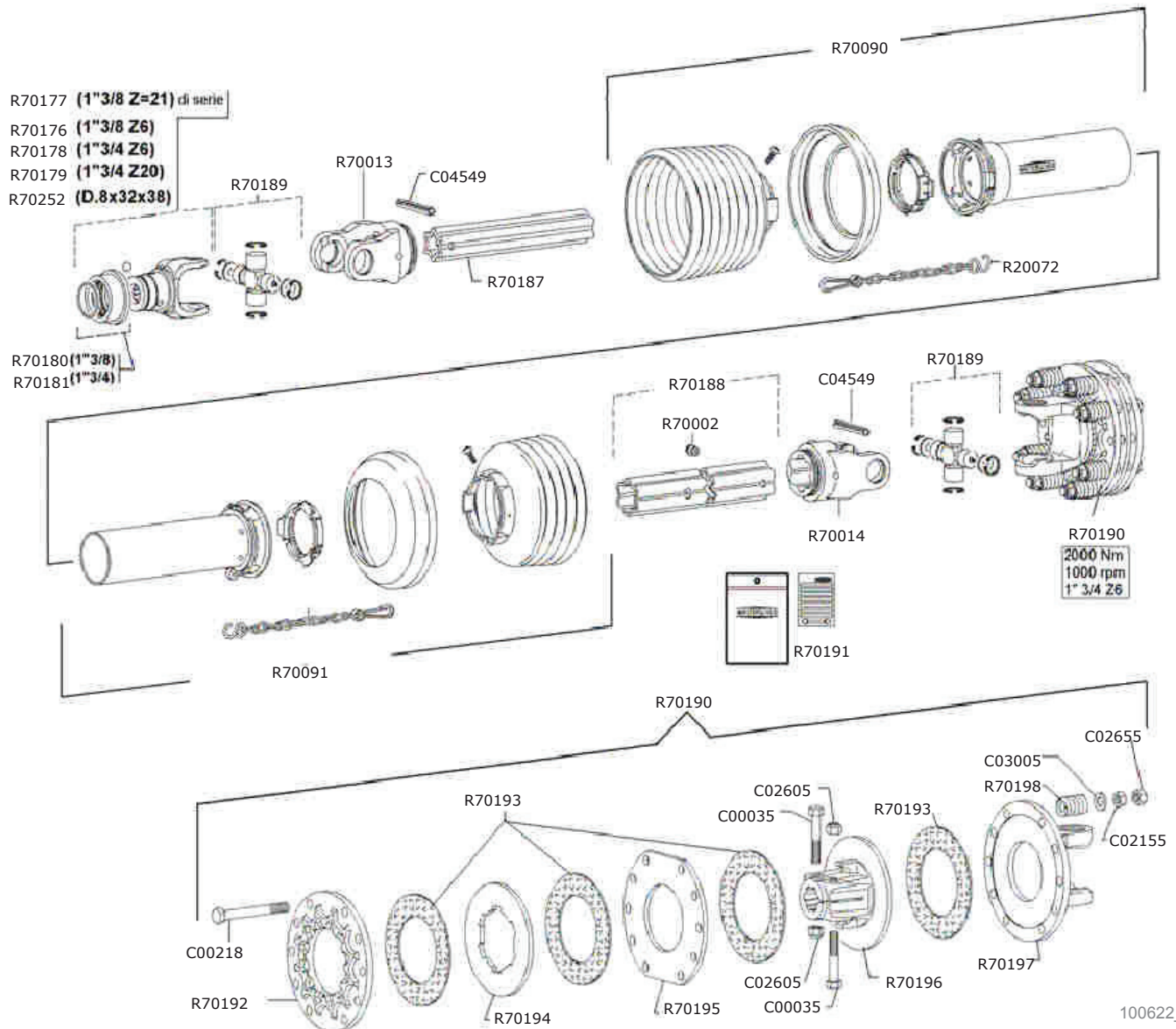
Zentralgelenkwelle

Drawing Code: **100622\_1**

Accessories:

Codice cardano  
Code pto shaft  
Code de arbre de transmission  
Code gelenkwelle

## M01751W



100622\_01



## Cardano centrale

Central pto shaft

Arbre de transmission centrale

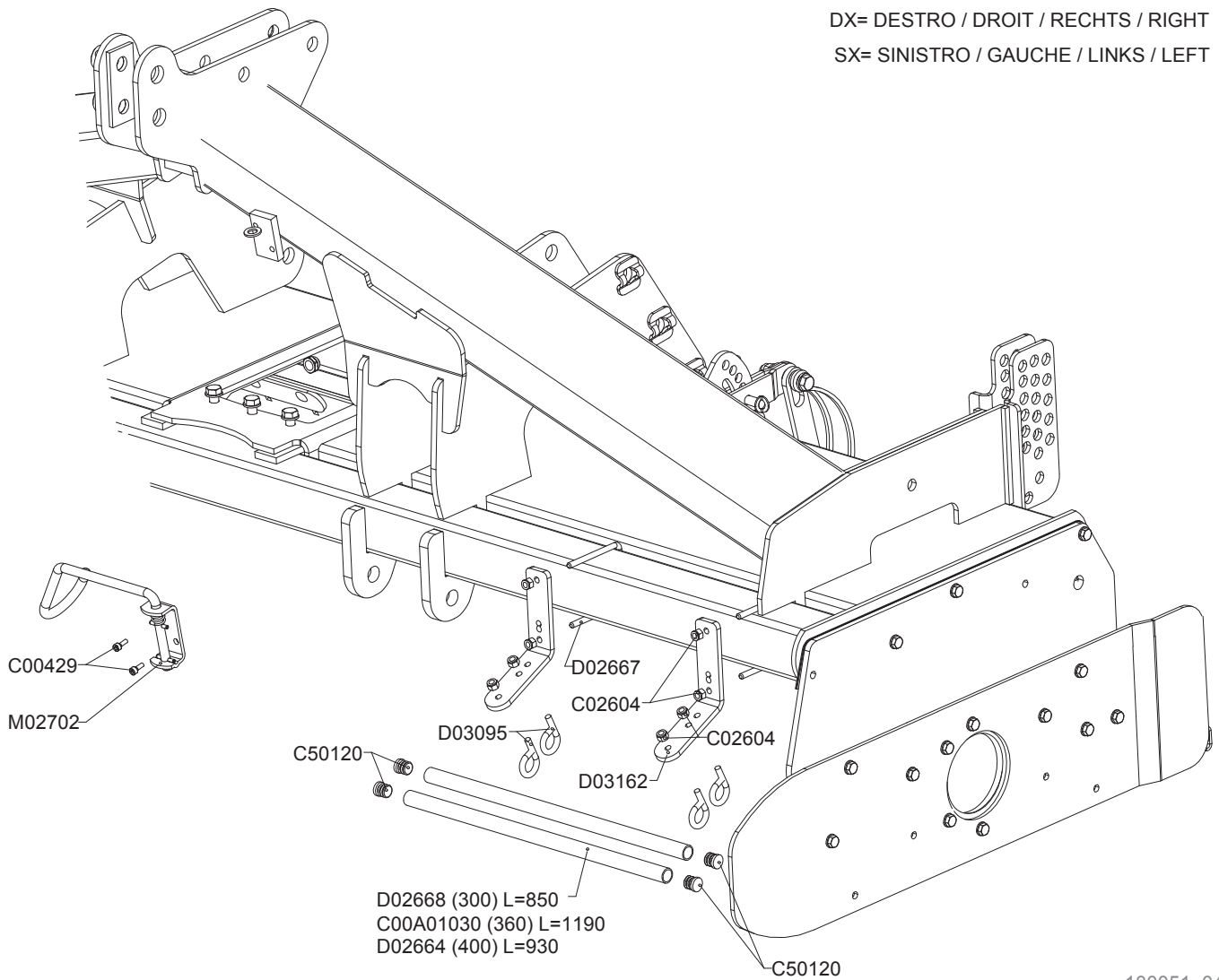
Zentralgelenkwelle

Drawing Code: **100622\_1**

Accessories:

N°	Code	Old.	Descrizione / Description
#	M80A00032	C00035	VITE TE 88 PG FP M12X70 ZINC UNI 5737
#	M80A00173	C00218	VITE TE 8.8 PF FP M12X1.25X120 UNI 5738
#	M85A00035	C02155	DADO NORMALE 8 PF M12X1,25 UNI 5588
#	M85A00078	C02605	DADO AUTOBLOC ALTO 8 M12 H=14 UNI 7473
#	M85A00087	C02655	DADO AUTOBLOC ALTO 8 M12X1,25 H=14 UNI 7473
#	M90A00008	C03005	RONDELLA PIANA D.13 DIN125-A ZINC.
#	MB0A00037	C04549	SPINA ELASTICA D.10X90
#	M70A00008	M01751W	"CARD. W2500-710 K90/4 1""3/4Z6 1""3/8Z21"
#	MH0A00021	R20072	CATENELLA FERMA PROTEZIONE CARDANO
#	MJ5A00012	R70002	INGRASSATORE A PRESSIONE D.4.6 WALTER.
#	M72A00086	R70013	FORCELLA RG2500 S4 WALTERSCHEID 097133
#	M72A00087	R70014	FORCELLA RG2500 S5 WAL. 097140 EST.STELL
#	G10A00099	R70090	PROT. CARD. ESTERNA SDH25-A550 375621
#	G10A00100	R70091	PROT. CARD. INTERNA SDH25-J550 375620
#	M72A00107	R70176	"FORCELLA RAPIDO ASG2500-1""3/8 Z=6"
#	M72A00108	R70177	"FORCELLA RAPIDO ASG2500-1""3/8 Z=21"
#	M72A00109	R70178	"FORCELLA RAPIDO ASG2500-1""3/4 Z=6"
#	M72A00110	R70179	"FORCELLA RAPIDO ASG2500-1""3/4 Z=20"
#	M25A00028	R70180	"COLLARE RAPIDO ""118 AS"" 1""3/8 AGRAS"
#	M25A00029	R70181	"COLLARE RAPIDO ""119 AS"" 1""3/4 AGRAS"
#	M73A00068	R70187	TUBO S4LH-560 TEMPRATO WALTERSCHEID 198835
#	M73A00069	R70188	TUBO S5-545 STANDARD 119647
#	M71A00014	R70189	"CROCIERA COMPL WALT.2500 ""LONG LIFE 250H""
#	M75A00108	R70190	"FRIZIONE COMPL K90/4-2000- 1""3/4 Z6"
#	Q15A00472	R70191	ADESIVO ISTRUZIONI WALTERSCHEID 120777
#	C15A00948	R70192	DISCO DI PRESSIONE K90/4
#	G15A00009	R70193	DISCO ATTRITO 150X91X3 K90/4
#	C15A00949	R70194	DISCO INTERNO D.151.5X80.5X7 K90/4
#	C15A00950	R70195	DISCO INTERNO D.189X91X7 K90/4
#	M75A00109	R70196	"MOZZO K90/4 1""3/4 Z6"
#	M72A00115	R70197	FORCELLA A FLANGIA KG-K90-2500
#	MF5A00063	R70198	MOLLA DI COMPRESSIONE K90/4
#	M72A00124	R70252	FORCELLA ASG2500 D8X32X38 (RUSSIA)

GB	FR	D	E
SCREW	VIS	SCHRAUBE	TORNILLO
SCREW	VIS	SCHRAUBE	TORNILLO
NUT	BOULONS	NUT	DADO
NUT	BOULONS	NUT	DADO
NUT	BOULONS	NUT	DADO
WASHER	RONDELLE	UNTERLEGSSCHEIBE	ARANDELLA
SOCKET	GOUPILLE	STECKER	PASADOR
UNIVERSAL JOINT	CARDAN	GELENKWELLE	CARDAN
CHAIN	CHAINE	KETTE	CADENA
GREASE NIPPLE	GRAISSOR	FETTBUECHSE	ENGRASADOR
FORK	MACHOIRE	GABEL	HORQUILLA
FORK	MACHOIRE	GABEL	HORQUILLA
PROTECTION	PROTECTION	SCHUTZ	PROTECCIÓN
PROTECTION	PROTECTION	SCHUTZ	PROTECCIÓN
FORK	MACHOIRE	GABEL	HORQUILLA
FORK	MACHOIRE	GABEL	HORQUILLA
FORK	MACHOIRE	GABEL	HORQUILLA
FORK	MACHOIRE	GABEL	HORQUILLA
METAL RING	COLLARE	METALLRING	COLLAR
METAL RING	COLLARE	METALLRING	COLLAR
TUBE	TUBE	ROHR	TUBO
TUBE	TUBE	ROHR	TUBO
CRUISE	CROISIÈRE	CRUISE	CRUISE
CLUTCH	EMBAYAGE	KUPPLUNG	EMBRAGUE
STICKER	ADHESIF	AUFKLEBER	ADHESIVOS
DISC	DISQUE	SCHEIBE	DISCO
DISC	DISQUE	SCHEIBE	DISCO
DISC	DISQUE	SCHEIBE	DISCO
DISC	DISQUE	SCHEIBE	DISCO
HUB	ESSIEU	NABE	MAZO
FORK	MACHOIRE	GABEL	HORQUILLA
SPRING	RESSORT	FEDER	MUELLE
FORK	MACHOIRE	GABEL	HORQUILLA



100051\_04



**Kit C.E.**

Kit C.E.

Kit C.E.

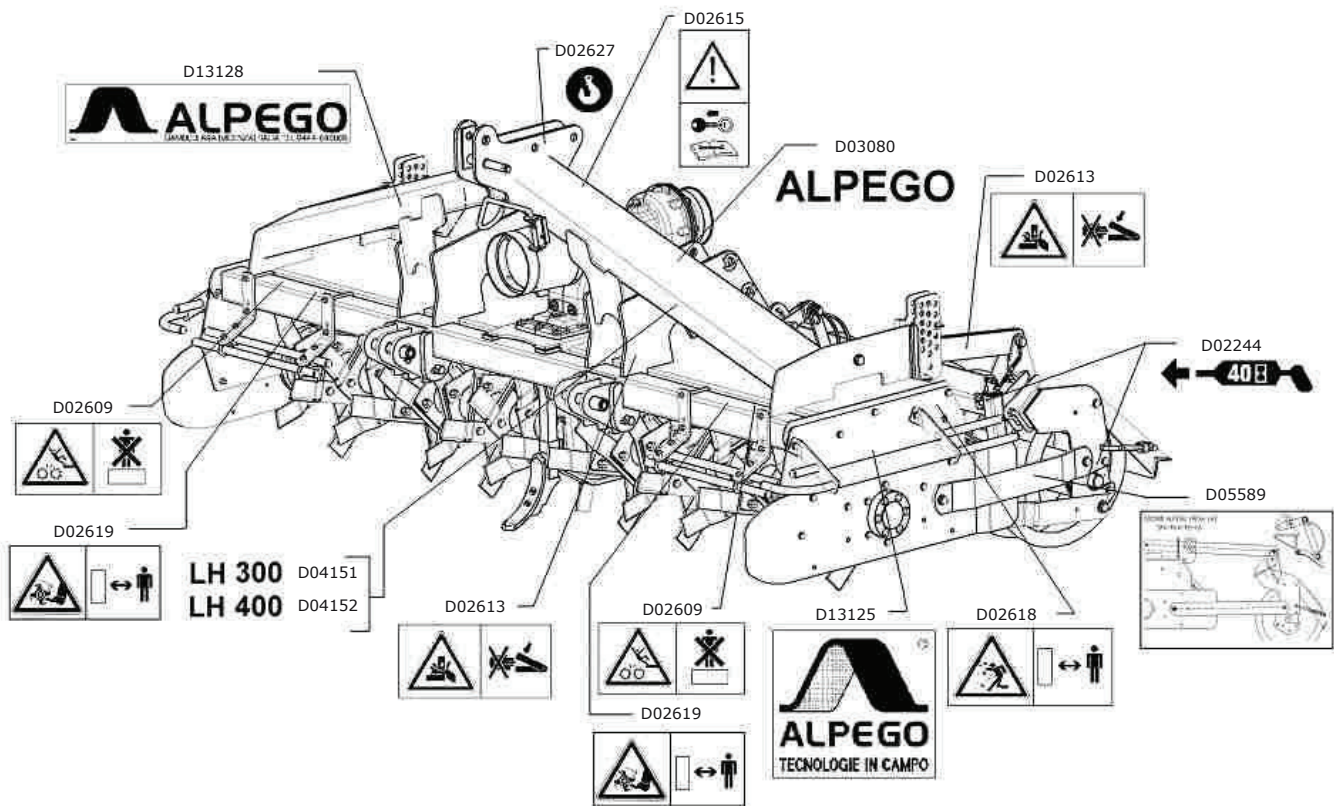
Kit C.E.

Drawing Code: **100051\_4**

Accessories:

N°	Code	Old.	Descrizione / Description
#	M80A00242	C00429	VITE TCEI PG M10X20 ZINC UNI 5931
#	C00A01030		TUBO PROTEZIONE L=1190
#	M85A00077	C02604	DADO AUTOBLOC ALTO 8 M10 H=11.5 UNI 7473
#	G10A00007	C50120	TAPPO PLASTICA TUBO D.25
#	C00A00070	D02664	TUBO PROTEZIONE L=930
#	MD5A00009	D02667	CAVALLOTTO QUADRO M10X100
#	C00A00071	D02668	TUBO PROTEZIONE L=850
#	MH5A00041	D03095	GANCIO M10 PER TUBO D. 26,9
#	C10A01289	D03162	STAFFA PROT. ANTER. LD-LE-DH 10MM
#	M79A00013	M02702	GANCIO SUPP. CARDANO COMPL.***

GB	FR	D	E
SCREW	VIS	SCHRAUBE	TORNILLO
TUBE	TUBE	ROHR	TUBO
NUT	BOULONS	NUT	DADO
PLUG	BOUCHON	STOEPSSEL	ENCHUFE
TUBE	TUBE	ROHR	TUBO
PIN	CAVALLIER	STIFT	CAVALLOTTI
TUBE	TUBE	ROHR	TUBO
HOOK	ATTACHE	HAKEN	ENGANCHE
BRACKET	SUPPORT	BUEGEL	SOPORTE
HOOK	ATTACHE	HAKEN	ENGANCHE







## Kit adesivi di sicurezza LH2

Kit adhesive of emergency LH2

Kit adhesifs de sa»rete LH2

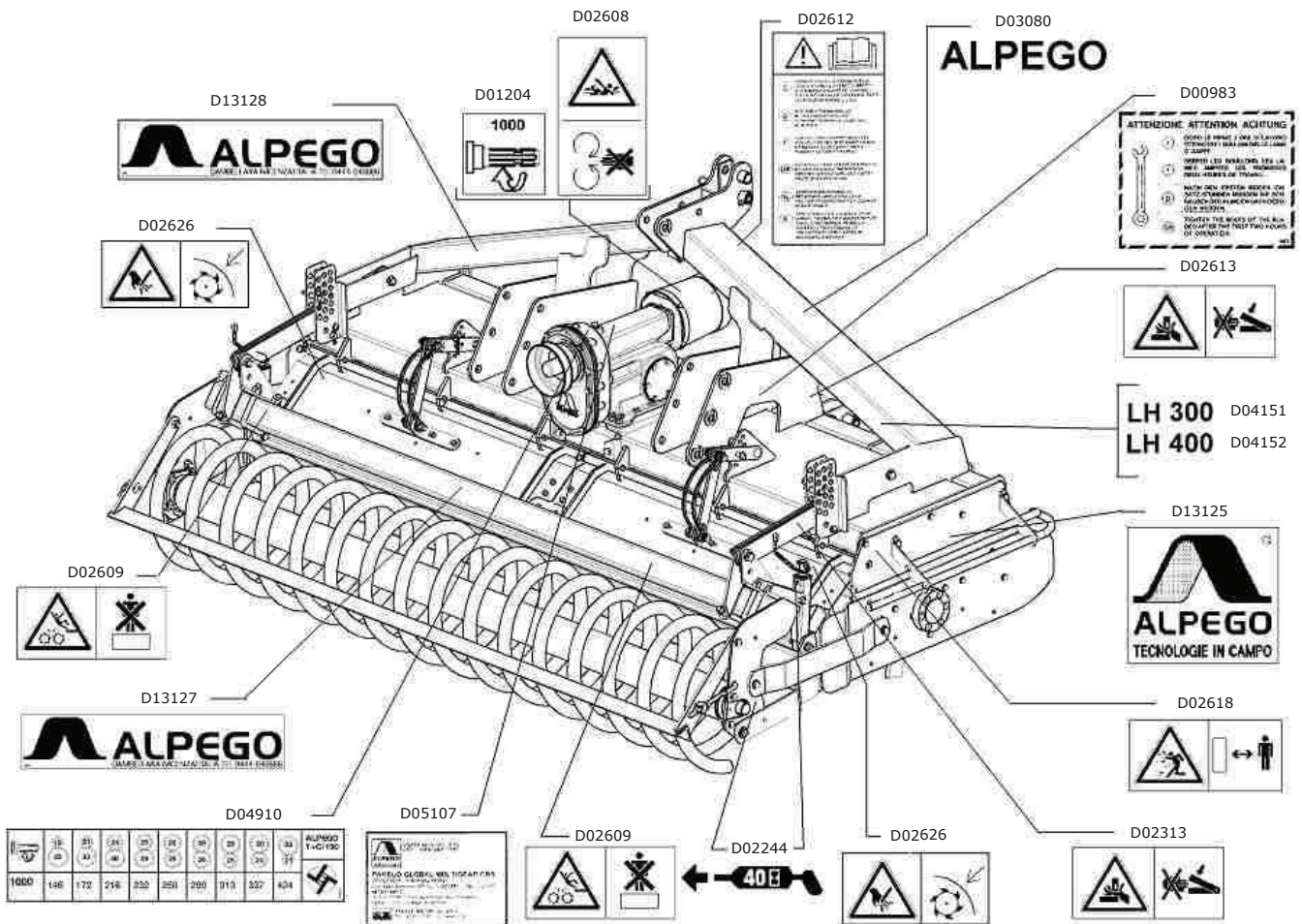
Installationsatzkleber der Dringlichkeit LH2

Drawing Code: **100349\_0**

Accessories:

N°	Code	Old.	Descrizione / Description
#	Q15A00067	D02244	ADESIVO INGRASSAGGIO FREQ.40H 55X25
#	Q15A00076	D02609	ADESIVO VIETATO SALIRE 110X55
#	Q15A00080	D02613	ADESIVO PERICOLO CESOIAM. 110X55
#	Q15A00082	D02615	ADESIVO TOGLIERE ENERGIA 110X55
#	Q15A00085	D02618	ADESIVO PROIEZIONE SASSI 55X110
#	Q15A00086	D02619	ADESIVO STARE LONTANI FRESA 55X110
#	Q15A00094	D02627	ADESIVO GANCIO DI SOLLEV. D.30
#	Q15A00106	D03080	ADESIVO ALPEGO INTAGLIATO 105X625
#	Q15A00136	D04151	ADESIVO: LH-300 (ROSSO H=45)
#	Q15A00137	D04152	ADESIVO: LH-400 (ROSSO H=45)
#	Q15A00189	D05589	ADESIVO MONTAGGIO RULLI LH2
#	Q15A00395	D13125	ADESIVO ALPEGO LA MIGL. TECN. IN CAMPO 240X173
#	Q15A00398	D13128	ADESIVO ALPEGO 340X68

GB	FR	D	E
STICKER	ADHESIF	AUFKLEBER	ADHESIVOS
STICKER	ADHESIF	AUFKLEBER	ADHESIVOS
STICKER	ADHESIF	AUFKLEBER	ADHESIVOS
STICKER	ADHESIF	AUFKLEBER	ADHESIVOS
STICKER	ADHESIF	AUFKLEBER	ADHESIVOS
STICKER	ADHESIF	AUFKLEBER	ADHESIVOS
STICKER	ADHESIF	AUFKLEBER	ADHESIVOS
STICKER	ADHESIF	AUFKLEBER	ADHESIVOS
STICKER	ADHESIF	AUFKLEBER	ADHESIVOS
STICKER	ADHESIF	AUFKLEBER	ADHESIVOS
STICKER	ADHESIF	AUFKLEBER	ADHESIVOS
STICKER	ADHESIF	AUFKLEBER	ADHESIVOS
STICKER	ADHESIF	AUFKLEBER	ADHESIVOS
STICKER	ADHESIF	AUFKLEBER	ADHESIVOS





## Kit adesivi di sicurezza LH2

Kit adhesive of emergency LH2

Kit adhesifs de sa»rete LH2

Installationsatzkleber der Dringlichkeit LH2

Drawing Code: **100350\_0**

Accessories:

N°	Code	Old.	Descrizione / Description	GB	FR	D	E
#	Q15A00005	D00983	ADESIVO ATTENZIONE SERRAGGIO 135X110	STICKER	ADHESIF	AUFKLEBER	ADHESIVOS
#	Q15A00010	D01204	ADESIVO 1000 GIRI TONDO D.58 GIALLO	STICKER	ADHESIF	AUFKLEBER	ADHESIVOS
#	Q15A00067	D02244	ADESIVO INGRASSAGGIO FREQ.40H 55X25	STICKER	ADHESIF	AUFKLEBER	ADHESIVOS
#	C05A04092	D02313	FLANGIA D.340 D.104 X 15 FE	FLANGE	FLANC	FLANSCH	FLANGE
#	Q15A00075	D02608	ADESIVO PROTEZIONE ALBERI 110X55	STICKER	ADHESIF	AUFKLEBER	ADHESIVOS
#	Q15A00076	D02609	ADESIVO VIETATO SALIRE 110X55	STICKER	ADHESIF	AUFKLEBER	ADHESIVOS
#	Q15A00079	D02612	ADESIVO LIBRETTO ISTR. 168X88	STICKER	ADHESIF	AUFKLEBER	ADHESIVOS
#	Q15A00080	D02613	ADESIVO PERICOLO CESOIAM. 110X55	STICKER	ADHESIF	AUFKLEBER	ADHESIVOS
#	Q15A00085	D02618	ADESIVO PROIEZIONE SASSI 55X110	STICKER	ADHESIF	AUFKLEBER	ADHESIVOS
#	Q15A00093	D02626	ADESIVO NON APRIRE COFANI 55x110	STICKER	ADHESIF	AUFKLEBER	ADHESIVOS
#	Q15A00106	D03080	ADESIVO ALPEGO INTAGLIATO 105X625	STICKER	ADHESIF	AUFKLEBER	ADHESIVOS
#	Q15A00136	D04151	ADESIVO: LH-300 (ROSSO H=45)	STICKER	ADHESIF	AUFKLEBER	ADHESIVOS
#	Q15A00137	D04152	ADESIVO: LH-400 (ROSSO H=45)	STICKER	ADHESIF	AUFKLEBER	ADHESIVOS
#	Q15A00168	D04910	ADESIVO N GIRI T+C 190 FH2/LH2	STICKER	ADHESIF	AUFKLEBER	ADHESIVOS
#	Q15A00177	D05107	ADESIVO OLIO GLOBAL MULTIGEAR CBS	STICKER	ADHESIF	AUFKLEBER	ADHESIVOS
#	Q15A00395	D13125	ADESIVO ALPEGO LA MIGL. TECN. IN CAMPO 240X173	STICKER	ADHESIF	AUFKLEBER	ADHESIVOS
#	Q15A00397	D13127	ADESIVO ALPEGO 250X50	STICKER	ADHESIF	AUFKLEBER	ADHESIVOS
#	Q15A00398	D13128	ADESIVO ALPEGO 340X68	STICKER	ADHESIF	AUFKLEBER	ADHESIVOS