

100061_02



Gruppo monovelocita

Crank group

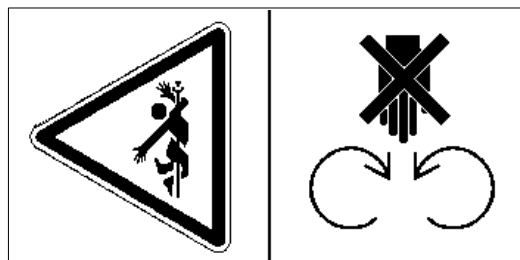
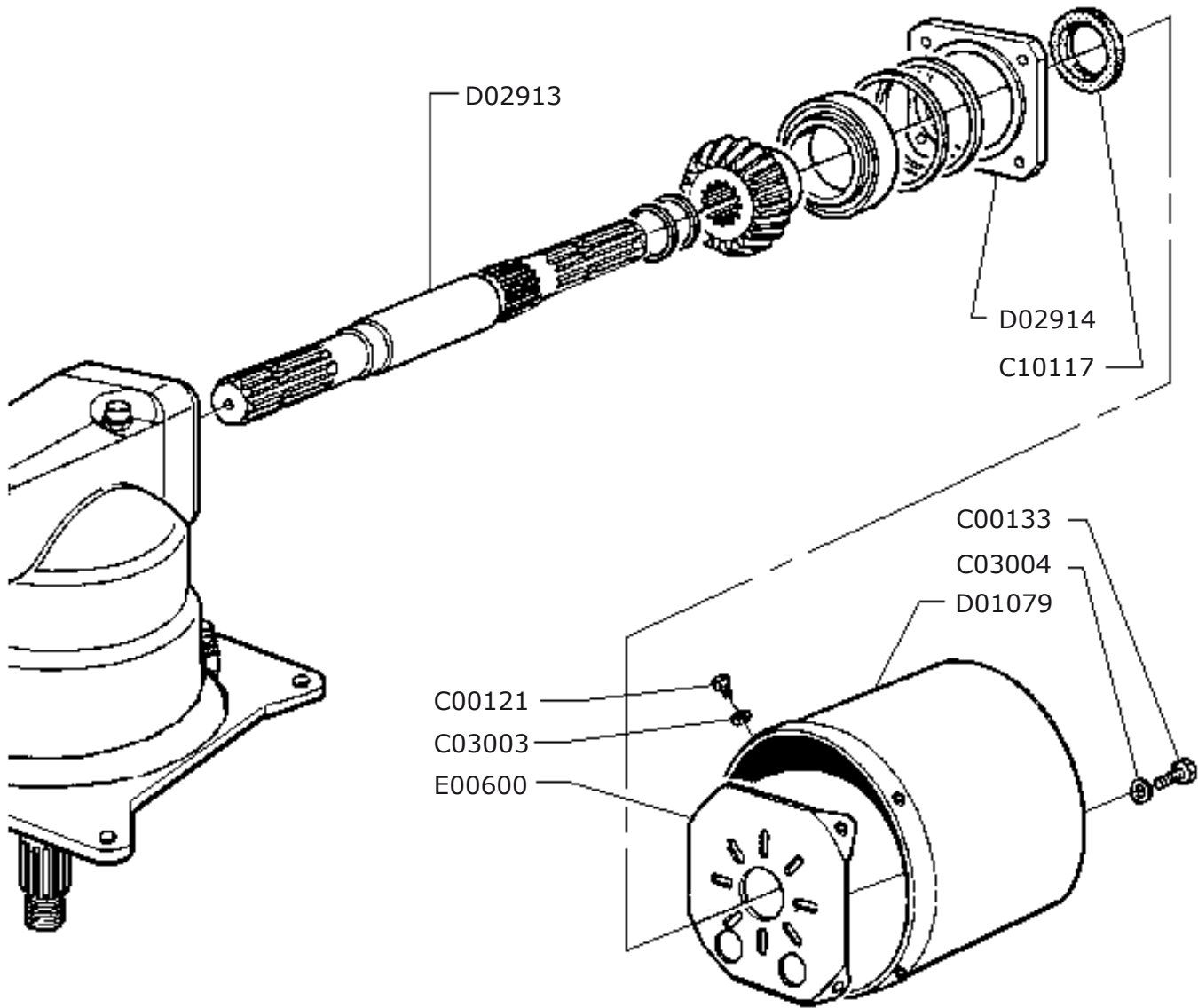
Manivelle groupe

Kurbelantrieb gruppe

Drawing Code: **100061_2**

Accessories:

N°	Code	Old.	Descrizione / Description	GB	FR	D	E
#	M80A00111	C00122	VITE TE 88 PG FT M8X25 ZINC UNI 5739	SCREW	VIS	SCHRAUBE	TORNILLO
#	M80A00118	C00131	VITE TE 88 PG FT M10X25 ZINC UNI 5739	SCREW	VIS	SCHRAUBE	TORNILLO
#	M80A00336	C00842	VITE TE 10.9 M12x40 UNI 5739	SCREW	VIS	SCHRAUBE	TORNILLO
#	M90A00005	C03003	RONDELLA PIANA D.8,4 DIN125-A ZINC.	WASHER	RONDELLE	UNTERLEGSSCHEIBE	ARANDELLA
#	M90A00007	C03004	RONDELLA PIANA D.10,5 DIN125-A ZINC.	WASHER	RONDELLE	UNTERLEGSSCHEIBE	ARANDELLA
#	M90A00050	C03205	DISCO ELAST. D.12.2X25X1.5 DIN 2093	DISC	DISQUE	SCHEIBE	DISCO
#	MA0A00012	C04037	SEEGER FORO D.90 UNI 7437	SEEGER	SEEGER	SEEGER	SEEGER
#	MA0A00044	C04144	SEEGER ALBERO D.54 UNI 7435	SEEGER	SEEGER	SEEGER	SEEGER
#	MA5A00038	C04238	SPESSORE REG. 95.2X109.7X0,2	THICKNESS	CALES	DICKE	ESPESOR
#	MA5A00039	C04239	SPESSORE REG. 95.2X109.7X0,25	THICKNESS	CALES	DICKE	ESPESOR
#	MA5A00040	C04240	SPESSORE REG. 95.2X109.7X0,3	THICKNESS	CALES	DICKE	ESPESOR
#	MA5A00041	C04241	SPESSORE REG. 95.2X109.7X0,5	THICKNESS	CALES	DICKE	ESPESOR
#	MA5A00042	C04242	RALLA REG. 95.2X109.7X2	FIFTH WHEEL	RONDELLE	DREHPLATTE	RAYA
#	MA5A00060	C04262	SPESSORE REG. * 40,2X49,8X2	THICKNESS	CALES	DICKE	ESPESOR
#	MA5A00062	C04263	SPESSORE REG. 40,2X50,8X0,20	THICKNESS	CALES	DICKE	ESPESOR
#	MA5A00063	C04264	SPESSORE REG. 40,2x50,8x0,25	THICKNESS	CALES	DICKE	ESPESOR
#	MA5A00064	C04265	SPESSORE REG. 40,2X50,8X0,35	THICKNESS	CALES	DICKE	ESPESOR
#	MA5A00065	C04266	SPESSORE REG. 40,2X50,8X0,50	THICKNESS	CALES	DICKE	ESPESOR
#	H00A00031	C10065	PARAOLIO BA D.60X80X10	SEALING RING	JOINT SPI	OELABDICHTUNG	PARAOLIO
#	H00A00043	C10117	PARAOLIO BASL D.35X62X10 (POLIACR.)	SEALING RING	JOINT SPI	OELABDICHTUNG	PARAOLIO
#	M20A00062	C21410	CUSCINETTO 30210 50X90X21,75	BEARING	ROULEMENT	KUGELLAGER	COJINETE
#	M20A00064	C21412	CUSCINETTO 30212 60X110X23,75	BEARING	ROULEMENT	KUGELLAGER	COJINETE
#	M20A00066	C21414	CUSCINETTO 30214 70X125X26,25	BEARING	ROULEMENT	KUGELLAGER	COJINETE
#	M20A00070	C21507	CUSCINETTO 32207 35X72X24,25	BEARING	ROULEMENT	KUGELLAGER	COJINETE
#	H45A00009	C41216	TAPPO CONICO M16X1,5 MAGNET.8X18 CH-17	PLUG	BOUCHON	STOEPSSEL	ENCHUFE
#	H65A00002	C41230	TAPPO SFIATO M16X1,5 (30.A) LABIRINTO	PLUG	BOUCHON	STOEPSSEL	ENCHUFE
#	L20A00003	C43005	OLIO CAMBIO EP-C ISO 320	OIL	HUILE	OEL	ACEITE
#	G10A00038	D01079	PROTEZIONE CARDANO D.INT.220X h 200	PROTECTION	PROTECTION	SCHUTZ	PROTECCIÓN
#	C15A00124	D02100	SCATOLA RIDUTTORE MONOV.DC-DF	BOX	BOITE	SCHACTEL	RECUADRO
#	M45A00015	D02101	ALBERO INGRESSO MONOV.DC-DF	SHAFT	ARBRE	WELLE	EJE
#	M40A00026	D02102	PIGNONE CONICO Z=14 DC-DD	PINION	PIGNON	RITZEL	PIÑON
#	C15A00125	D02103	COPERCHIO PIGNONE DC	LID	COUVERCLE	DECKEL	TAPA
#	M95A00025	D02104	GHIERA CON COLLARE M40X1,5 H=18.5	METAL RING	RONDELLE	METALL-RING	RUEDA
#	M45A00016	D02105	ALBERO PORTA CORONA DC	SHAFT	ARBRE	WELLE	EJE
#	M40A00027	D02106	CORONA CONICA Z=25	CROWN	COURONNE	KRONE	CORONA
#	H30A00003	D02107	GUARNIZIONE SPESS. * 0,2 D.191XD.240	GASKET	GARNITURE	DICHTUNG	GUARNICION
#	H30A00004	D02108	GUARNIZIONE SPESS. * 0,3 D.191XD.240	GASKET	GARNITURE	DICHTUNG	GUARNICION
#	H30A00005	D02109	GUARNIZIONE SPESS. * 0,4 D.191XD.240	GASKET	GARNITURE	DICHTUNG	GUARNICION
#	C15A00126	D02110	BASAMENTO MONOVEL.DC-DF	BASE	BASE	GRUNDFLAECHE	BASE
#	H65A00009	D02429	TAPPO SFIATO M16X1.5 ASTA LIV. L.110	PLUG	BOUCHON	STOEPSSEL	ENCHUFE
#	C20A00034	E00600	FONDELLO PROTEZIONE COMPLETO	BOTTOM	FOND	BODEN	FONDO
#	M65A00008	M01075	GRUPPO MONOVELOCITA' KM8	ASSEMBLY OVERVIEWGRUPE		EINHEIT-UEBERBLICK GRUPO	



D02608



P.d.F. posteriore DC

Rear power take off DC

Prise de force arriere DC

Hinrere Zapfwelle DC

Drawing Code:

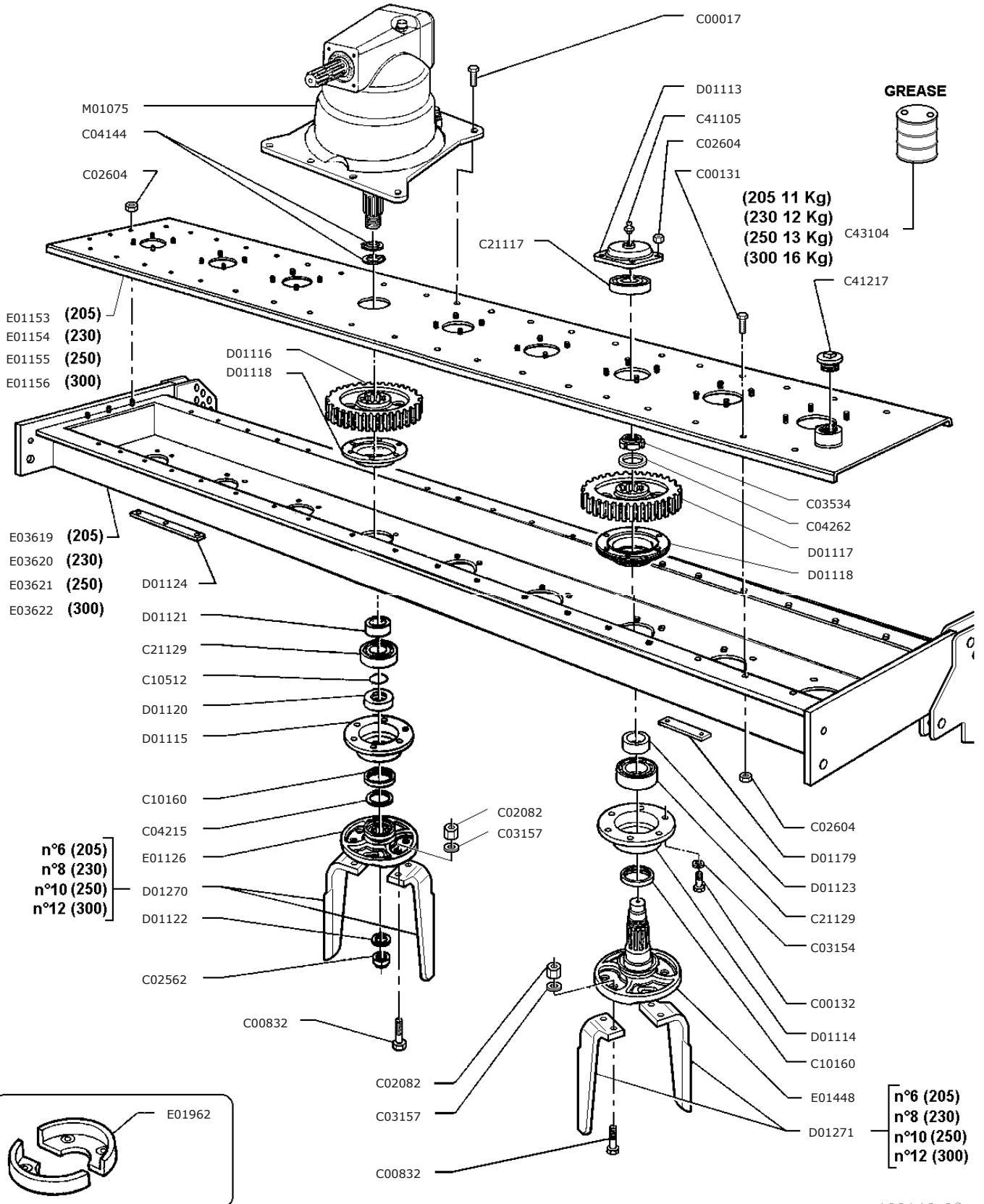
100086_0

Accessories:

SA1A00006

N°	Code	Old.	Descrizione / Description
#	M80A00110	C00121	VITE TE 88 PG FT M8X20 ZINC UNI 5739
#	M80A00121	C00133	VITE TE 88 PG FT M10X35 ZINC UNI 5739
#	M90A00005	C03003	RONDELLA PIANA D.8,4 DIN125-A ZINC.
#	M90A00007	C03004	RONDELLA PIANA D.10,5 DIN125-A ZINC.
#	H00A00043	C10117	PARAOLIO BASL D.35X62X10 (POLIACR.)
#	G10A00038	D01079	PROTEZIONE CARDANO D.INT.220X h 200
#	Q15A00075	D02608	ADESIVO PROTEZIONE ALBERI 110X55
#	M45A00028	D02913	ALBERO CON P.D.F. POSTERIORE DC
#	C15A00202	D02914	COPERCHIO P.D.F. POSTERIORE DC***
#	C20A00034	E00600	FONDELLO PROTEZIONE COMPLETO

GB	FR	D	E
SCREW	VIS	SCHRAUBE	TORNILLO
SCREW	VIS	SCHRAUBE	TORNILLO
WASHER	RONDELLE	UNTERLEGSCHIEBE	ARANDELLA
WASHER	RONDELLE	UNTERLEGSCHIEBE	ARANDELLA
SEALING RING	JOINT SPI	OELABDICHTUNG	PARAOLIO
PROTECTION	PROTECTION	SCHUTZ	PROTECCIÓN
STICKER	ADHESIF	AUFKLEBER	ADHESIVOS
SHAFT	ARBRE	WELLE	EJE
LID	COUVERCLE	DECKEL	TAPA
BOTTOM	FOND	BODEN	FONDO





Vasca trasmissione

Tank transmission

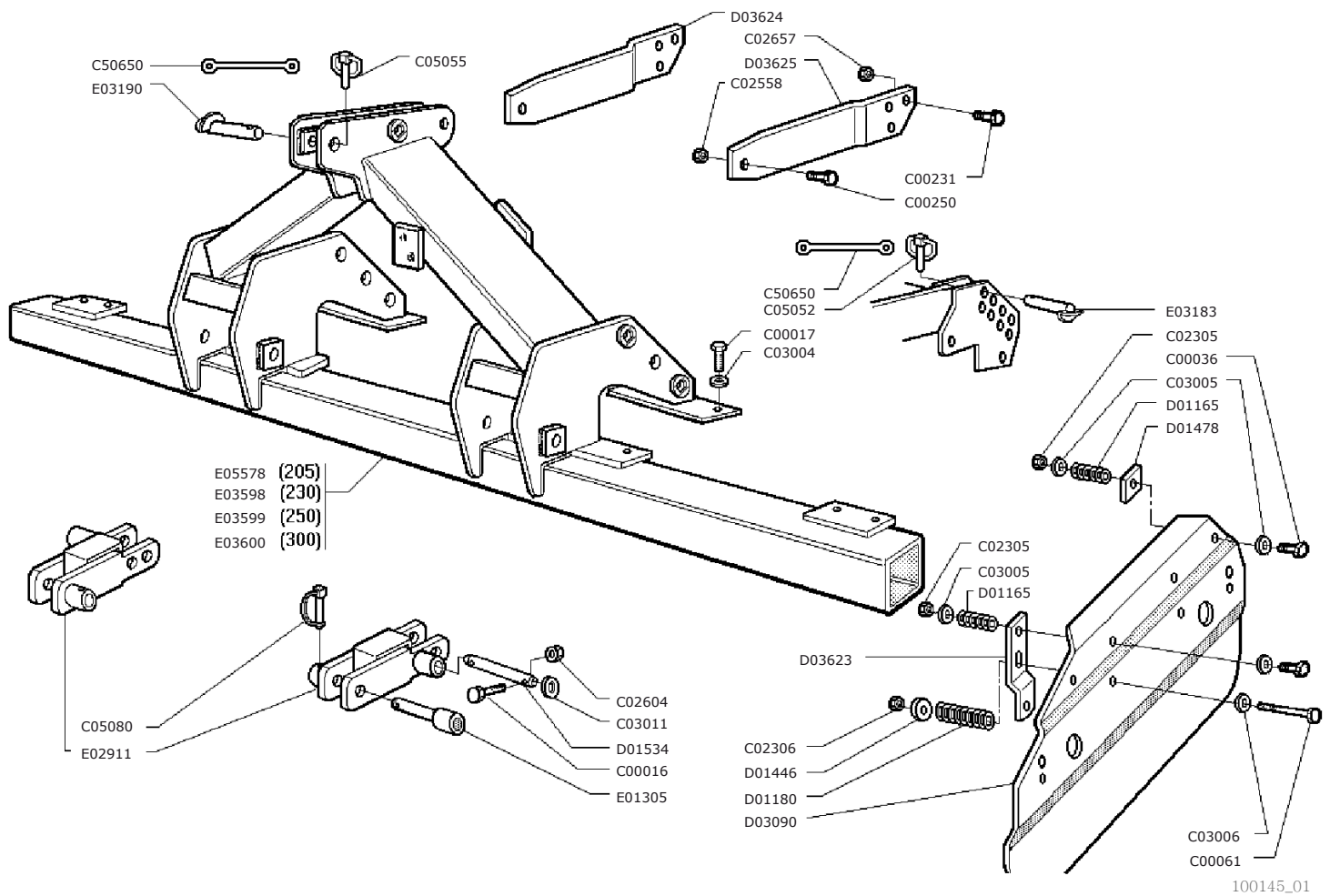
Transmission cuve

Gehaeuse antrieb

Drawing Code: **100146_2**

Accessories:

N°	Code	Old.	Descrizione / Description	GB	FR	D	E
#	M80A00014	C00017	VITE TE 88 PG FP M10X50 UNI 5737 (NERA)	SCREW	VIS	SCHRAUBE	TORNILLO
#	M80A00118	C00131	VITE TE 88 PG FT M10X25 ZINC UNI 5739	SCREW	VIS	SCHRAUBE	TORNILLO
#	M80A00120	C00132	VITE TE 88 PG FT M10X30 ZINC UNI 5739	SCREW	VIS	SCHRAUBE	TORNILLO
#	M80A00325	C00832	VITE TE 12.9 M16X1,5X50 F25/28 (T.TONDA) ZINCO-LAMELLARE	SCREW	VIS	SCHRAUBE	TORNILLO
#	M85A00022	C02082	DADO ALTO 10 PF M16X1,5 5587 ZINCO-LAMELLARE	NUT	BOULONS	NUT	DADO
#	M85A00070	C02562	DADO AUTOBLOC BASSO 8 PF M30X2 H=23 UNI 7474	NUT	BOULONS	NUT	DADO
#	M85A00077	C02604	DADO AUTOBLOC ALTO 8 M10 H=11.5 UNI 7473	NUT	BOULONS	NUT	DADO
#	M90A00042	C03154	RONDELLA GROWER RINF.D.10 ASA B 27	WASHER	RONDELLE	UNTERLEGSSCHEIBE	ARANDELLA
#	M90A00048	C03157	RONDELLA GROWER RINF. D.16 ASA B27 ZINCO-LAMELLARE	WASHER	RONDELLE	UNTERLEGSSCHEIBE	ARANDELLA
#	M95A00012	C03534	GHIERA AUTOBLOC.ALTA GUP M40X1,5	METAL RING	RONDELLE	METALL-RING	RUEDA
#	MA0A00044	C04144	SEEGER ALBERO D.54 UNI 7435	SEEGER	SEEGER	SEEGER	SEEGER
#	MA5A00014	C04215	SPESSORE REG. 45X55X1	THICKNESS	CALES	DICKE	ESPESOR
#	MA5A00060	C04262	SPESSORE REG. * 40,2X49,8X2	THICKNESS	CALES	DICKE	ESPESOR
#	H00A00067	C10160	PARAOLIO BASL D.58X72X10	SEALING RING	JOINT SPI	OELABDICHTUNG	PARAOLIO
#	H05A00015	C10512	ANELLO OR 149 D.INT.44.45X3,53	RING	AMORTISSEUR	RING	ANILLO
#	M20A00025	C21117	CUSCINETTO 6207 ZC3 35X72X17	BEARING	ROULEMENT	KUGELLAGER	COJINETE
#	M20A00036	C21129	CUSCINETTO 6210 C3 50X90X20	BEARING	ROULEMENT	KUGELLAGER	COJINETE
#	MJ5A00005	C41105	INGRASSATORE M10X1 DIRITTO	GREASE NIPPLE	GRAISSOR	FETTBUECHSE	ENGRASADOR
#	H45A00010	C41217	"TAPPO 1" 1/4 GAS"	PLUG	BOUCHON	STOEPSSEL	ENCHUFE
#	L20A00014	C43104	GRASSO VASCHE ERPICI EP GREASE A NLGI 000	GREASE	GRAISSE	FETT	GRASA/GORDO
#	M35A00002	D01113	COPERCHIETTO SUPERIORE DD***	LID	COUVERCLE	DECKEL	TAPA
#	M35A00003	D01114	SUPPORTO LATERALE DD ***	SUPPORT	SUPPORT	STUTZE	APOYO
#	M35A00004	D01115	SUPPORTO CENTRALE DD ***	SUPPORT	SUPPORT	STUTZE	APOYO
#	M40A00001	D01116	INGRANAGGIO CENTRALE CMT.DD Z=46	GEAR	ENGRENAGES	ZAHNRAEDER	ENGRANAJE
#	M40A00002	D01117	INGRANAGGIO LATERALE DD Z=46	GEAR	ENGRENAGES	ZAHNRAEDER	ENGRANAJE
#	M35A00005	D01118	PIASTRA INTERNA DD ***	PLATE	PLAQUE	PLATTE	PLACA
#	C15A00041	D01120	DIST. D.58 D.45 L.18,5 CARBON***	SPACER	ENTRETOISE	ABSTANDSTUECK	ESPACIADORES
#	C15A00042	D01121	DIST. D.70-60 D.50,5 L.21,5***	SPACER	ENTRETOISE	ABSTANDSTUECK	ESPACIADORES
#	C05A03924	D01122	RONDELLA PIANA ALB. PORTA.CENT. 8MM	WASHER	RONDELLE	UNTERLEGSSCHEIBE	ARANDELLA
#	C15A00043	D01123	DIST. D.60,3 D.51 L.20	SPACER	ENTRETOISE	ABSTANDSTUECK	ESPACIADORES
#	C05A03925	D01124	RINFORZO VASCA 3 FORI D.13 10MM ***	REINFORCEMENT	RENFORT	VERSTAERKUNG	REFUERZO
#	C05A03933	D01179	RINFORZO VASCA 2 FORI D.13 10MM ***	REINFORCEMENT	RENFORT	VERSTAERKUNG	REFUERZO
#	MK0A00012	D01270	DENTE A LAMA DESTRO DD 12MM	TOOTH	DENT	ZAHN	DIENTE
#	MK0A00017	D01271	DENTE A LAMA SINISTRO DD 12MM	TOOTH	DENT	ZAHN	DIENTE
#	C20A00102	E01126	PORTADENTI CENTRALE DD	TINE SUPPORT	PORTE DENT	ZINKENTRAEGER	PORTADIENTES
#	C20A00110	E01153	COPERCHIO 205 COMPLETO	LID	COUVERCLE	DECKEL	TAPA
#	C20A00111	E01154	COPERCHIO COMPLETO DC 230	LID	COUVERCLE	DECKEL	TAPA
#	C20A00112	E01155	COPERCHIO COMPLETO DC/DD 250	LID	COUVERCLE	DECKEL	TAPA
#	C20A00113	E01156	COPERCHIO COMPLETO DD 300	LID	COUVERCLE	DECKEL	TAPA
#	C20A00192	E01448	PORTADENTI LATERALE DD2-DD3	TINE SUPPORT	PORTE DENT	ZINKENTRAEGER	PORTADIENTES
#	C15A00795	E01962	SEMIPROTEZIONE ROTORI DD-DF	SEMPROTECTION	SEMPROTECTION	HALBE SICHERUNG	SEMPROTECCION
#	C20A00673	E03619	VASCA COMPLETA RB-205	GEAR BED	VASQUE	OEL-WANNE	BAÑO
#	C20A00674	E03620	VASCA COMPLETA DB/DC-230	GEAR BED	VASQUE	OEL-WANNE	BAÑO
#	C20A00675	E03621	VASCA COMPLETA DC/RC-250	GEAR BED	VASQUE	OEL-WANNE	BAÑO
#	C20A00676	E03622	VASCA COMPLETA DB/DC-300	GEAR BED	VASQUE	OEL-WANNE	BAÑO
#	M65A00008	M01075	GRUPPO MONOVELOCITA' KM8	ASSEMBLY OVERVIEWGRUPE		EINHEIT-UEBERBLICK GRUPO	





Telaio
Frame
Chassis
Rahmen

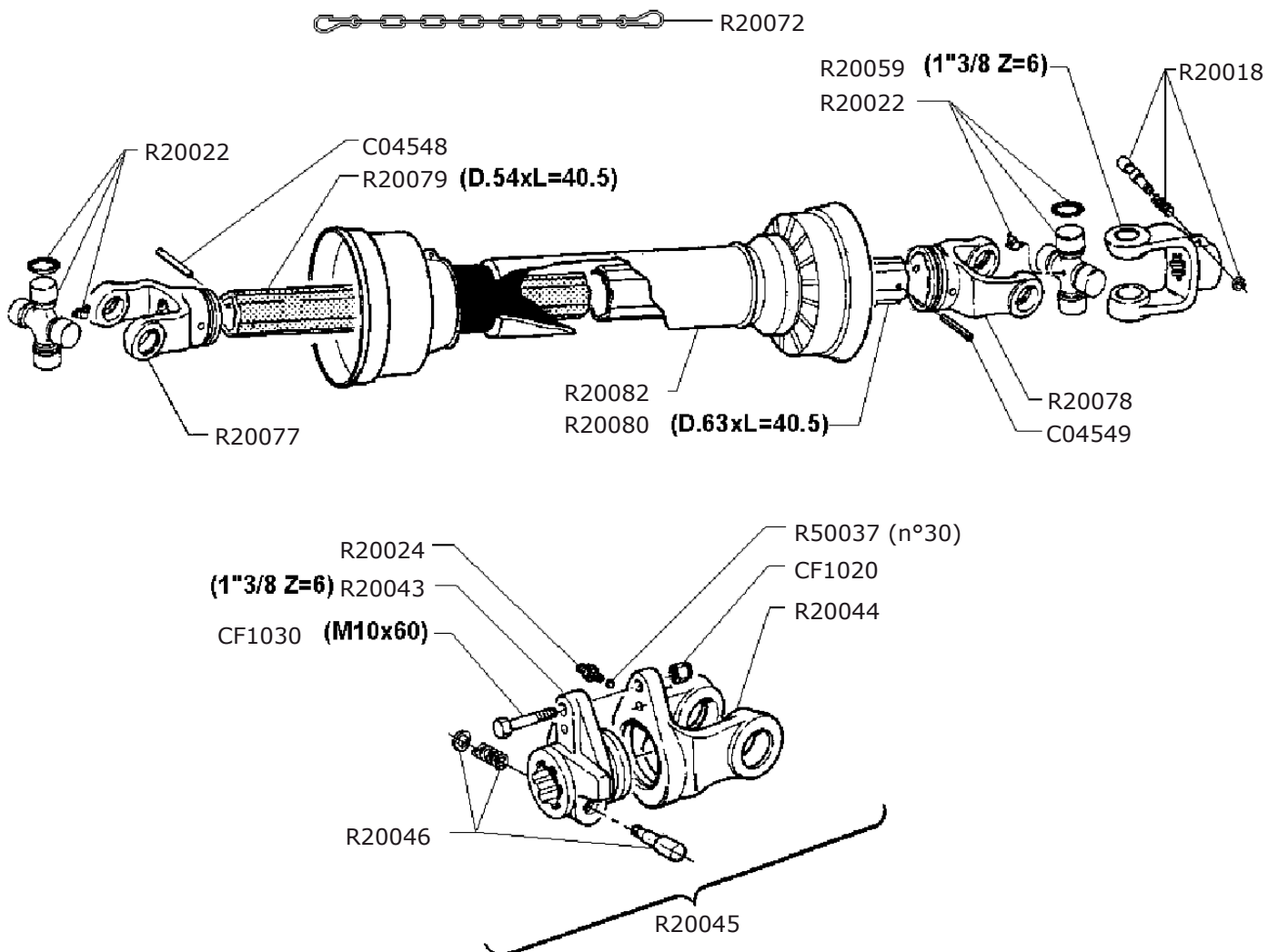
Drawing Code: **100145_1**

Accessories:

N°	Code	Old.	Descrizione / Description	GB	FR	D	E
#	M80A00013	C00016	VITE TE 88 PG FP M10X45 ZINC UNI 5737	SCREW	VIS	SCHRAUBE	TORNILLO
#	M80A00014	C00017	VITE TE 88 PG FP M10X50 UNI 5737 (NERA)	SCREW	VIS	SCHRAUBE	TORNILLO
#	M80A00033	C00036	VITE TE 88 PG FP M12X80 ZINC UNI 5737	SCREW	VIS	SCHRAUBE	TORNILLO
#	M80A00054	C00061	VITE TE 88 PG FP M14X140 ZINC UNI 5737	SCREW	VIS	SCHRAUBE	TORNILLO
#	M80A00180	C00231	VITE TE 88 PF FP M16X1,5X50 ZINC UNI 5738	SCREW	VIS	SCHRAUBE	TORNILLO
#	M80A00195	C00250	VITE TE 88 PF FP M20X1,5X60 ZINC UNI 573	SCREW	VIS	SCHRAUBE	TORNILLO
#	M85A00050	C02305	DADO METALBLOC M12 X 1.75	NUT	BOULONS	NUT	DADO
#	M85A00051	C02306	DADO METALBLOC M14 (SOST. DA C02606)	NUT	BOULONS	NUT	DADO
#	M85A00066	C02558	DADO AUTOBLOC BASSO 8 PF M20X1,5 H=20 UNI 7474	NUT	BOULONS	NUT	DADO
#	M85A00077	C02604	DADO AUTOBLOC ALTO 8 M10 H=11.5 UNI 7473	NUT	BOULONS	NUT	DADO
#	M85A00089	C02657	DADO AUTOBLOC ALTO 8 M16X1,5 H=18 UNI 7473	NUT	BOULONS	NUT	DADO
#	M90A00007	C03004	RONDELLA PIANA D.10,5 DIN125-A ZINC.	WASHER	RONDELLE	UNTERLEGSCHIEBE	ARANDELLA
#	M90A00008	C03005	RONDELLA PIANA D.13 DIN125-A ZINC.	WASHER	RONDELLE	UNTERLEGSCHIEBE	ARANDELLA
#	M90A00009	C03006	RONDELLA PIANA D.15 DIN125-A ZINC.	WASHER	RONDELLE	UNTERLEGSCHIEBE	ARANDELLA
#	M90A00014	C03011	RONDELLA PIANA D.28 DIN125-A ZINC.	WASHER	RONDELLE	UNTERLEGSCHIEBE	ARANDELLA
#	MB0A00093	C05052	SPINA A SCATTO D.8	SOCKET	GOUPILLE	STECKER	PASADOR
#	MB0A00096	C05055	SPINA A SCATTO D.10 CON TIRANTE IN GOMMA	SOCKET	GOUPILLE	STECKER	PASADOR
#	MB0A00101	C05080	SPINOTTO PER MOTOZAPPA D.10X60 UTILE	PIN	GOUPILLE	STIFT	PASADOR
#	M79A00002	C50650	GOMMINO CON ANELLI L.240 MM.	RUBBER	CAOUTCHOUC	BELAG	GOMAS
#	MF5A00007	D01165	MOLLA SUP.FIANC.DD D.EST.25XD.INT.F6X35	SPRING	RESSORT	FEDER	MUELLE
#	MF5A00009	D01180	MOLLA INF.FIANCATE DD D.EST42XD.F6X90	SPRING	RESSORT	FEDER	MUELLE
#	C05A03975	D01446	RONDELLA D.60X15X4 (RICAVATA DA SFRIDI)	WASHER	RONDELLE	UNTERLEGSCHIEBE	ARANDELLA
#	C05A03984	D01478	PIASTRINA 40x50x10 FORO D.13 10mm	METAL STRAP	METAL DEPLOYE	BANDEISEN	PLATILLO
#	M15A00017	D01534	PERNO D.28X224 UT.2 FORI D.11ZINC	PIN	PIVOT	STIFT	PIN
#	C10A01272	D03090	FIANCATA MOBILE RD - DC3 6MM	SIDE	LONG	NEBEN	JUNTO
#	C05A04333	D03623	RINFORZO FIANCATA DC 8mm	REINFORCEMENT	RENFORT	VERSTAERKUNG	REFUERZO
#	C10A01358	D03624	LAMA RULLO DC/RC/RD DESTRA 12MM	METAL PLATE	LAME	METALL-PLATTE	CUCHILLA
#	C10A01359	D03625	LAMA RULLO DC/RC/RD SINISTRA 12MM	METAL PLATE	LAME	METALL-PLATTE	CUCHILLA
#	M15A00169	E01305	PERNO D.28X106 UT.FORO D.12 SALD ZINC***	PIN	PIVOT	STIFT	PIN
#	C20A00523	E02911	ATTACCO TRATT. DD-RE	CONNECTION	ATTELAGE	ANSCHLUSS	ATAQUE
#	M15A00171	E03183	PERNO ROND D.20X36,5 UT.FORO D.9ZINC***	PIN	PIVOT	STIFT	PIN
#	M15A00172	E03190	PERNO ROND.25X109 UT.FORO D.12 ZINC***	PIN	PIVOT	STIFT	PIN
#	C20A00658	E03598	TELAIO DB-230	FRAME	CHASSIS	RAHMEN	MARCO
#	C20A00660	E03599	TELAIO DB/RD-250	FRAME	CHASSIS	RAHMEN	MARCO
#	C20A00662	E03600	TELAIO DB/RD-300	FRAME	CHASSIS	RAHMEN	MARCO
#	C20A01044	E05578	TELAIO RD-205	FRAME	CHASSIS	RAHMEN	MARCO

Codice cardano
Code pto shaft
Code de arbre de transmission
Code gelenkwelle

M01401



100059_00



Cardano

Pto shaft

Arbre de transmission

Gelenkwelle

Drawing Code:

100059_0

Accessories:

N°	Code	Old.	Descrizione / Description
#	MB0A00036	C04548	SPINA ELASTICA D.10X80
#	MB0A00037	C04549	SPINA ELASTICA D.10X90
#	SCOA00002	CF1020	CONF. 10 BULLONI TE 8.8 M8X60 (SICUREZZA CARDANO)
#	SCOA00003	CF1030	CONF. 10 BULLONI TE 8.8 M10X60 (SICUREZZA CARDANO)
#	M70A00002	M01401	"CARDANO R08-880-LIMIT. 1""3/8Z6-1""3/8Z6"
#	MF0A00060	R20018	PULSANTE COMPLETO (cod.1801038)
#	M71A00003	R20022	CROCIERA BX8 (COD. 1008017)
#	MJ5A00011	R20024	INGRASSATORE (cod.6560010)
#	M75A00047	R20043	MOZZO LIMITATORE 8 (COD.1708035)
#	M72A00021	R20044	FORCELLA LIMITAT.8 (cod.1708036)
#	M75A00048	R20045	LIMITATORE LC8 COMPLETO SOST. DA R50040
#	MF0A00061	R20046	PULSANTE COMPLETO LUNGO
#	M72A00025	R20059	"FORCELLA 8 1"" 3/8 Z=6 (COD.1708003)"
#	MH0A00021	R20072	CATENELLA FERMA PROTEZIONE CARDANO
#	M72A00027	R20077	FORCELLA TUBO INT 8/54 (1708032)
#	M72A00028	R20078	FORCELLA TUBO EST 8/63 (1708030)
#	M73A00024	R20079	TUBO INT 8 D.54x405 CMT. (M01401)
#	M73A00025	R20080	TUBO EST 8 D.63X4 (1537181)
#	G10A00079	R20082	PROTEZIONE COMPL. A8X1200 (1008207) EUR
#	M20A00111	R50037	"SFERA DIN 5401 1/4"""

GB	FR	D	E
SOCKET	GOUPILLE	STECKER	PASADOR
SOCKET	GOUPILLE	STECKER	PASADOR
KIT	CONFECTION	SATZ	CONF.
KIT	CONFECTION	SATZ	CONF.
UNIVERSAL JOINT	CARDAN	GELENKWELLE	CARDAN
BUTTON	BOUTON	BUTTON	BOTÓN
CRUISE	CROISIÈRE	CRUISE	CRUISE
GREASE NIPPLE	GRAISSOR	FETTBUECHSE	ENGRASADOR
HUB	ESSIEU	NABE	MAZO
FORK	MACHOIRE	GABEL	HORQUILLA
LIMITER	LIMITEUR	BEGRENZER	LIMITADOR
BUTTON	BOUTON	BUTTON	BOTÓN
FORK	MACHOIRE	GABEL	HORQUILLA
CHAIN	CHAINE	KETTE	CADENA
FORK	MACHOIRE	GABEL	HORQUILLA
FORK	MACHOIRE	GABEL	HORQUILLA
TUBE	TUBE	ROHR	TUBO
TUBE	TUBE	ROHR	TUBO
PROTECTION	PROTECTION	SCHUTZ	PROTECCIÓN
BALL	BOULES	BALL	BOLA